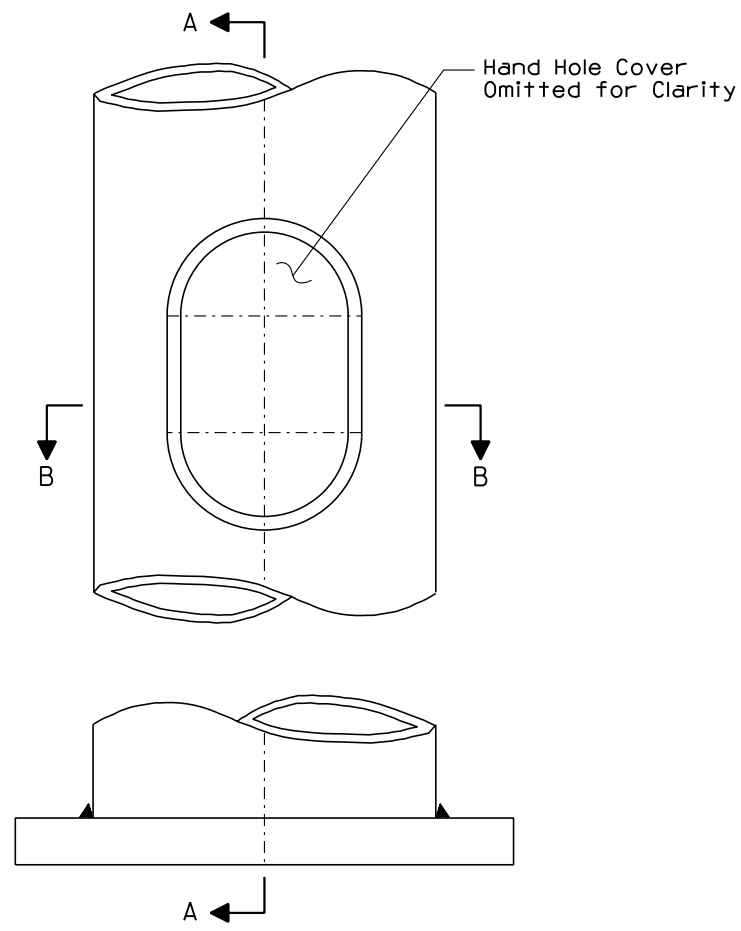
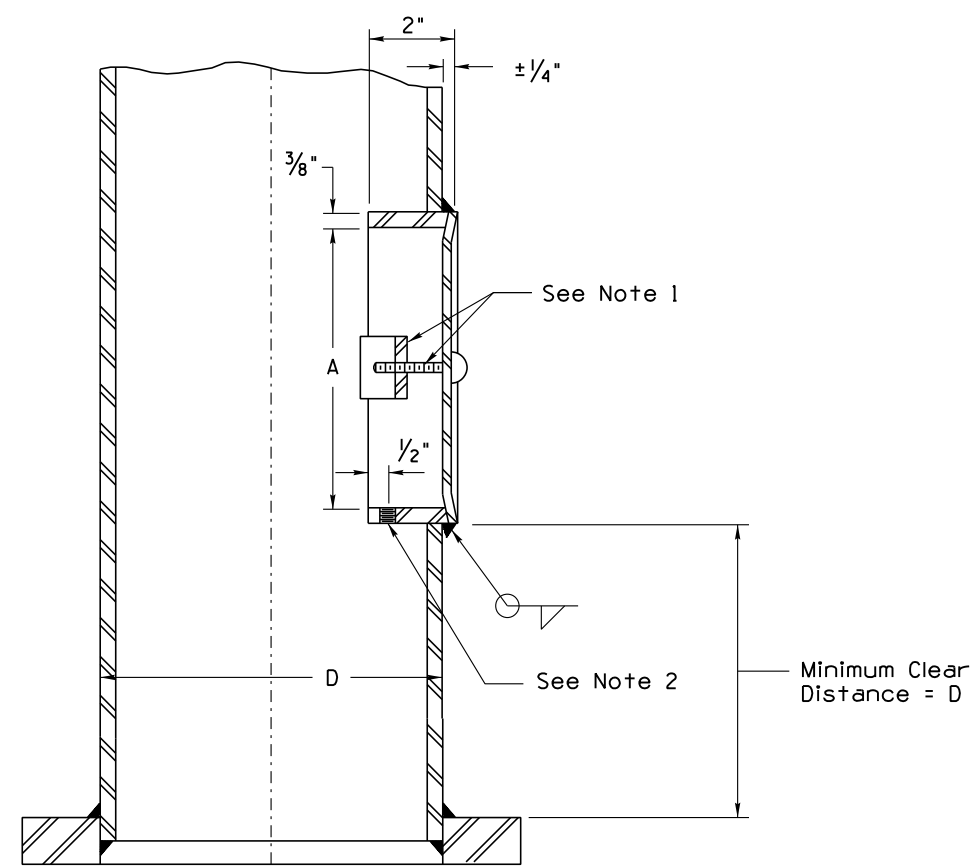


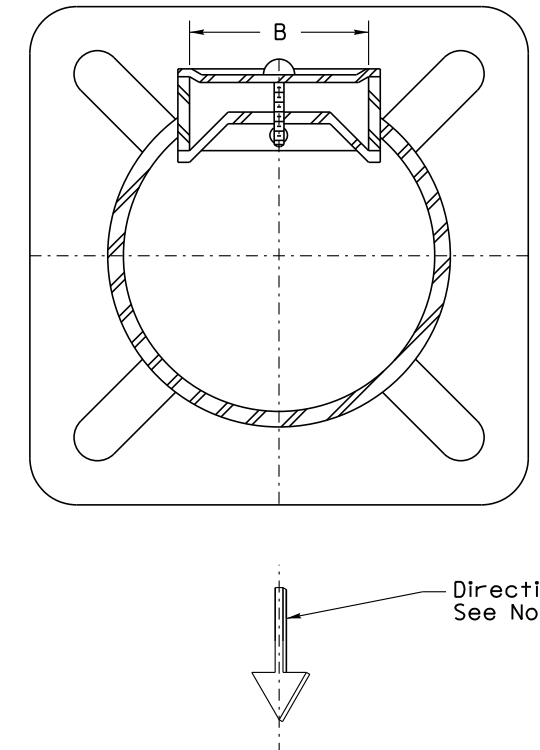
Note to Designer: The information presented in this Standard Drawing has been prepared in accordance with recognized engineering principles and is for general use. It should not be used for specific application without competent professional examination and verification of its suitability and applicability by a licensed professional engineer. Comments within the inner border line shall not be altered.



HAND HOLE DETAIL
(Bolt Slots Not Shown)



SECTION A-A



SECTION B-B

NOTES:

1. Hand hole cover locking device shall be used.
2. Pole ground shall be 5/16" Dia NC tapped hole located as shown.
3. Hand hole shall be oriented so that it is located 180 degrees from the alignment of mast arm.
4. Hand hole cover may be rectangular shape or oval shape.
5. Dimensions A and B are determined by the manufacturer in accordance with section 5.14.6.2 of the 2013 AASHTO Standard Specifications for Structural Supports for Highway Signs, Luminaires, and Traffic Signals (Including the 2015 interim revisions).

STANDARDS ENGINEER A. ALZUBI	ARIZONA DEPARTMENT OF TRANSPORTATION INFRASTRUCTURE DELIVERY AND OPERATIONS DIVISION TRAFFIC SIGNAL & LIGHTING STANDARD DRAWING	
RECOMMENDED FOR APPROVAL GROUP MANAGER M. HANNA		
APPROVED	POLE HAND HOLE DETAILS	DRAWING NO. T-SL 4.18
STANDARDS COMMITTEE APPROVED FOR DISTRIBUTION		DATE 04/19