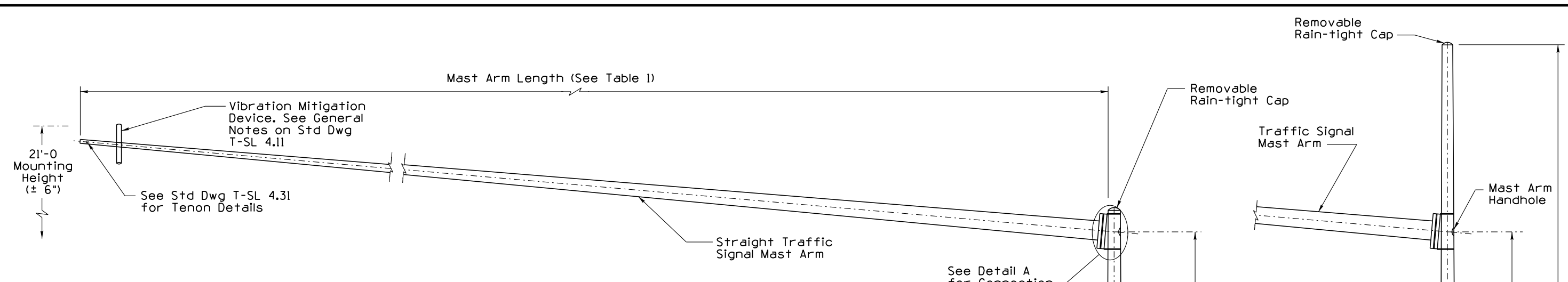
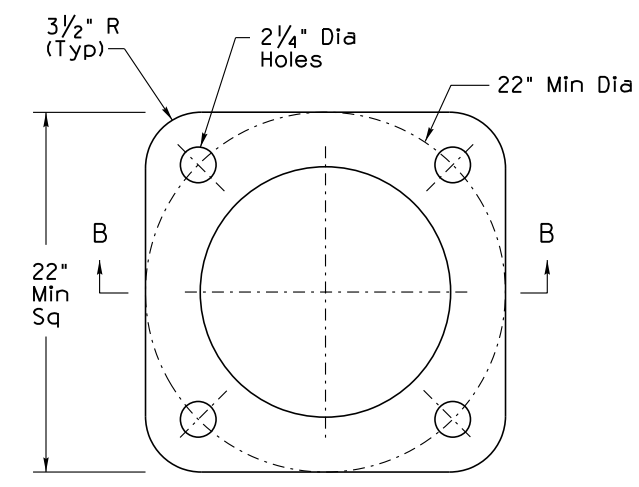


Note to Designer: The information presented in this Standard Drawing has been prepared in accordance with recognized engineering principles and is for general use. It should not be used for specific application without competent professional examination and verification of its suitability and applicability by a licensed professional engineer. Comments within the inner border line shall not be altered.

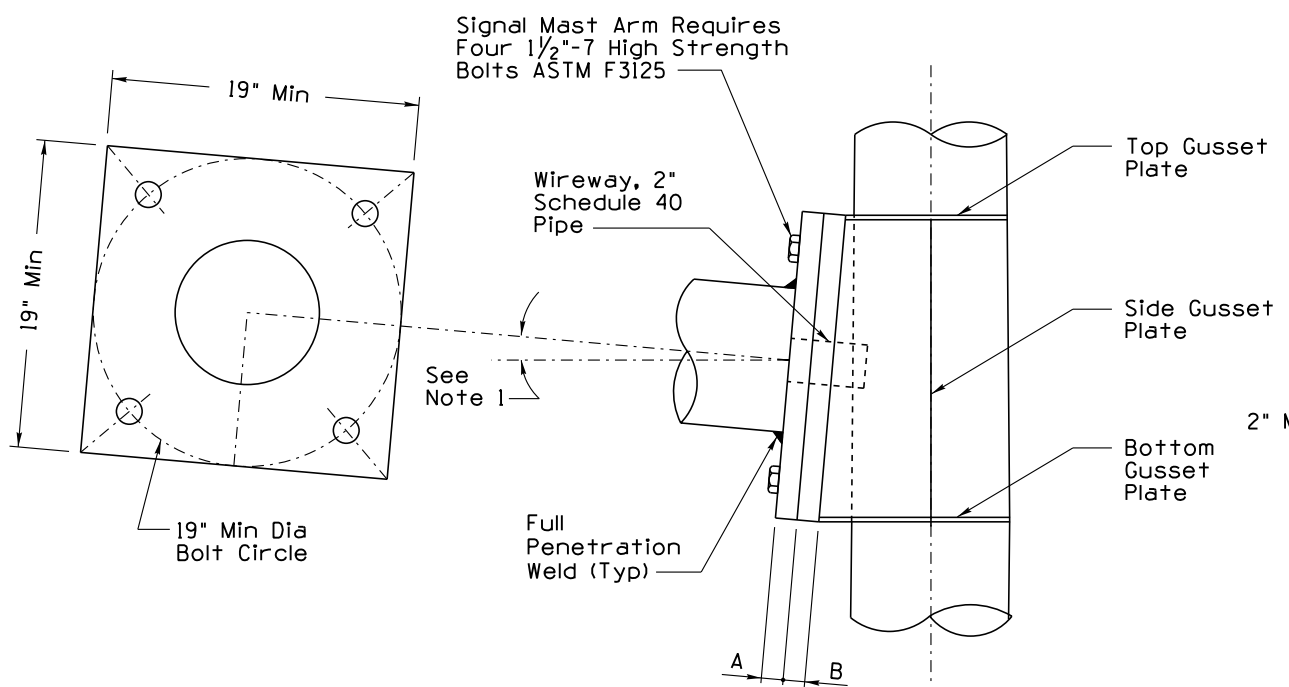


- NOTES:**
1. Rise angle per manufacturer's plans.
 2. Dimensions A, B, and D are determined by the manufacturer based on the design criteria provided on T-SL 4.11
 3. Weld symbols not shown. All weld symbols shall be shown on the shop drawings.

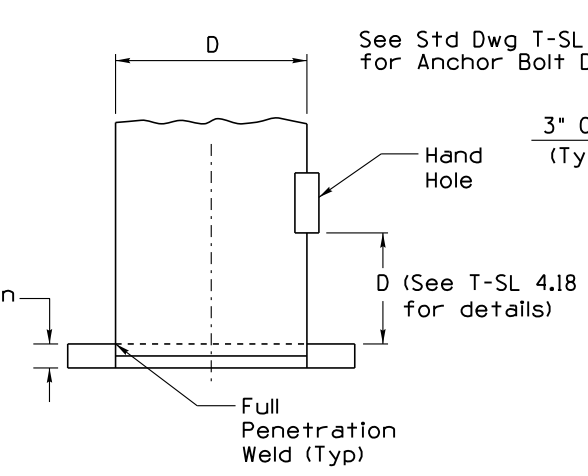
TABLE 1 SIGNAL MAST ARM INFORMATION		
Pole Name	60-V	65-V
Nominal Mast Arm Length	60'-0"	65'-0"
Minimum Mast Arm Base Plate Size	19"x19"	19"x19"



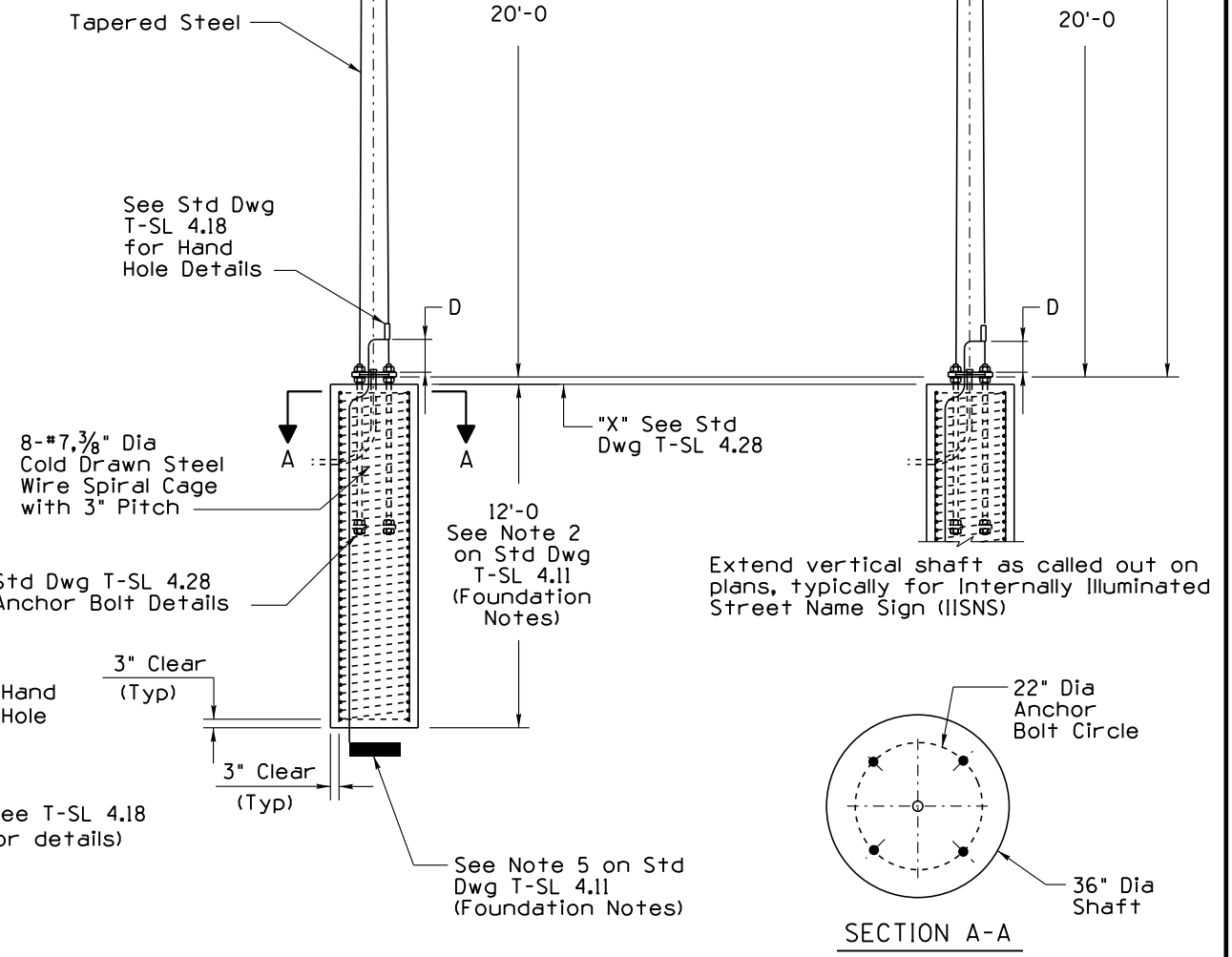
BASE PLATE DETAIL



DETAIL A
MAST ARM CONNECTION DETAIL



SECTION B-B
(Bolt Slots Not Shown)



SECTION A-A

STANDARDS ENGINEER A. ALZUBI	ARIZONA DEPARTMENT OF TRANSPORTATION INFRASTRUCTURE DELIVERY AND OPERATIONS DIVISION TRAFFIC SIGNAL & LIGHTING STANDARD DRAWING	
RECOMMENDED FOR APPROVAL GROUP MANAGER M. HANNA	T <small>Y</small> P <small>E</small> V P <small>O</small> L <small>E</small> S (60-V and 65-V) WITH 60 FT AND 65 FT M <small>A</small> S <small>T</small> A <small>R</small> M S <small>P</small> A <small>N</small> L <small>E</small> N <small>G</small> T <small>H</small>	D <small>R</small> A <small>W</small> I <small>N</small> G N <small>O</small> . T-SL 4.16
APPROVED	STANDARDS COMMITTEE APPROVED FOR DISTRIBUTION	DATE 04/19