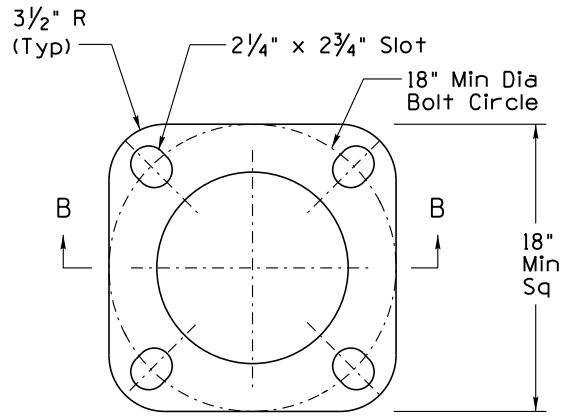


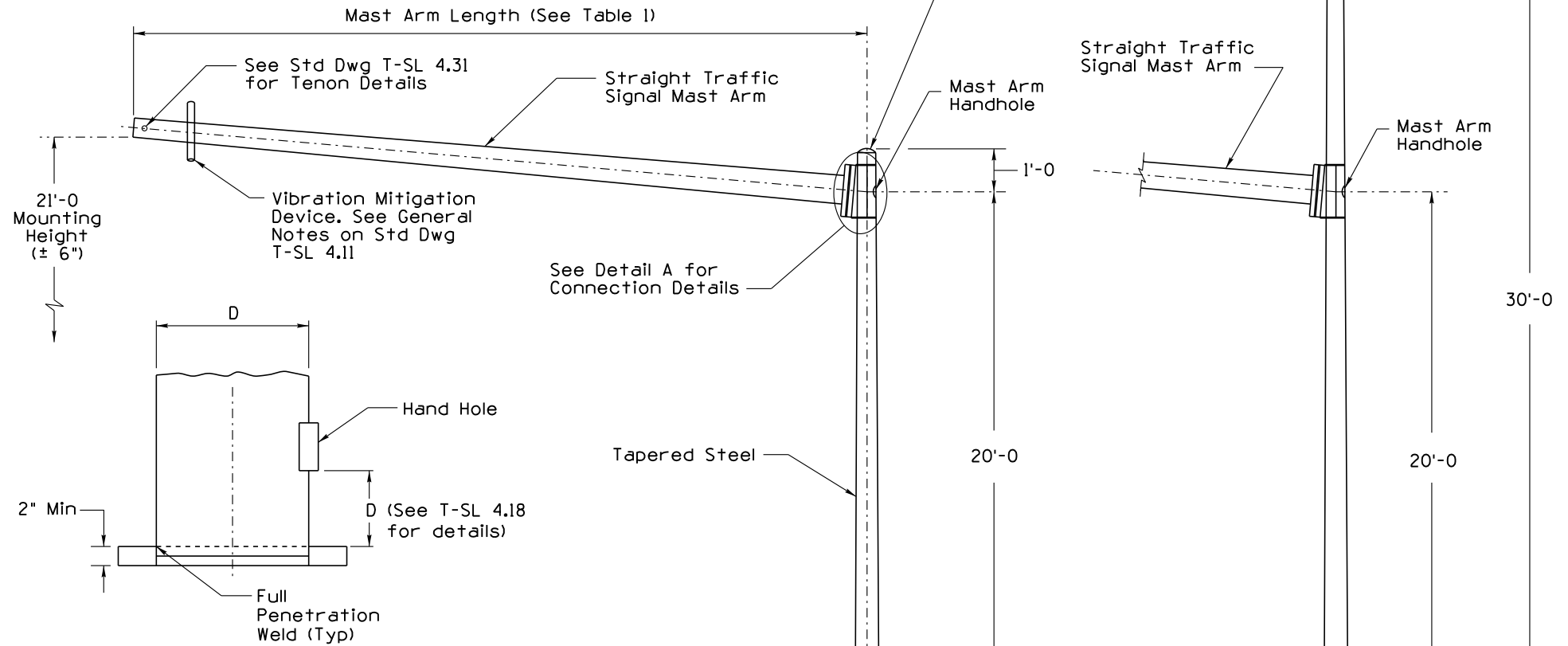
NOTES:

1. Rise angle per manufacturer's plans.
2. Dimensions A, B, and D are determined by the manufacturer based on the design criteria provided on T-SL 4.11
3. Weld symbols not shown. All weld symbols shall be shown on the shop drawings.

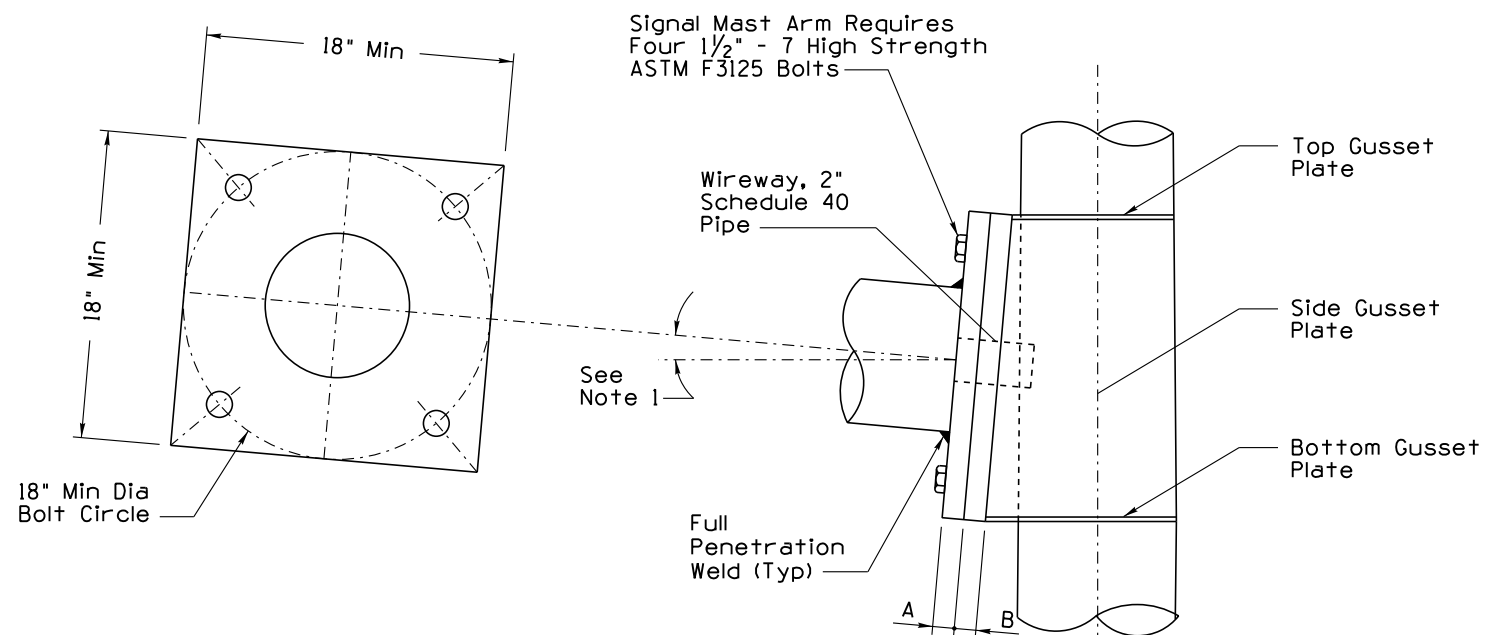
TABLE 1 SIGNAL MAST ARM INFORMATION				
Pole Name	25-J	30-J	35-J	40-J
Nominal Mast Arm Length	25'-0"	30'-0"	35'-0"	40'-0"
Minimum Mast Arm Base Plate Size	18"x18"	18"x18"	18"x18"	18"x18"



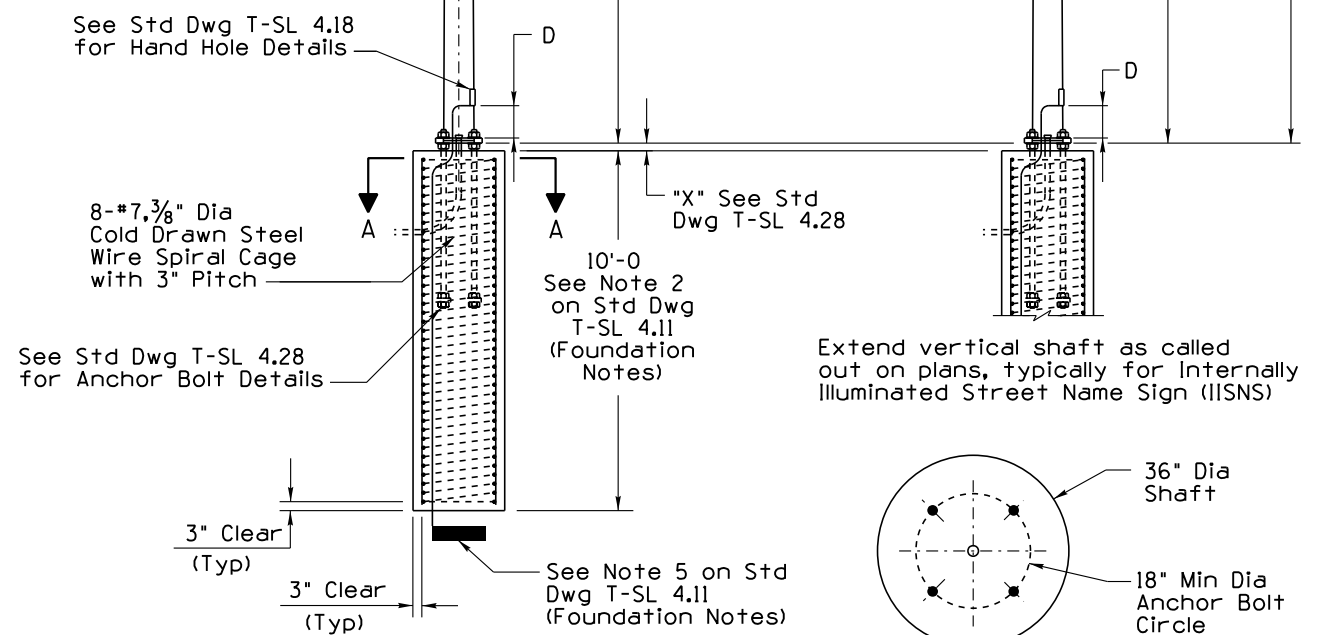
BASE PLATE DETAIL



**SECTION B-B
(Bolt Slots Not Shown)**



**DETAIL A
MAST ARM CONNECTION DETAIL**



SECTION A-A

STANDARDS ENGINEER A. ALZUBI	ARIZONA DEPARTMENT OF TRANSPORTATION INFRASTRUCTURE DELIVERY AND OPERATIONS DIVISION TRAFFIC SIGNAL & LIGHTING STANDARD DRAWING	DRAWING NO. T-SL 4.12
RECOMMENDED FOR APPROVAL GROUP MANAGER M. HANNA		
APPROVED	TYPE J POLES (25-J, 30-J, 35-J, AND 40-J) WITH 25 FT TO 40 FT MAST ARM SPAN LENGTH	
STANDARDS COMMITTEE APPROVED FOR DISTRIBUTION	DATE: 04/19	

Note to Designer: The information presented in this Standard Drawing has been prepared in accordance with recognized engineering principles and is for general use. It should not be used for specific application without competent professional examination and verification of its suitability and applicability by a licensed professional engineer. Comments within the inner border line shall not be altered.

PRIOR DISTRIBUTION DATE
 3:57:13 PM 4/30/2019 V:\Traffic\Dev\tr_dev\english_stds\signal_light\current_stds\ets14.12.dgn