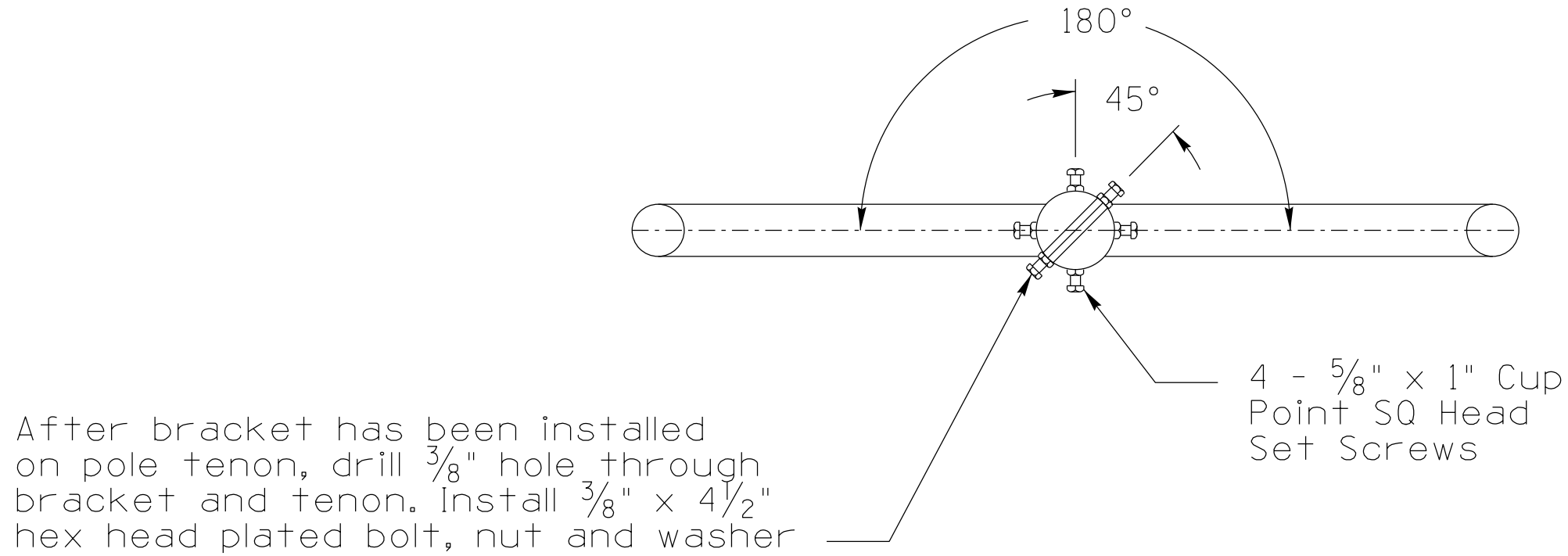
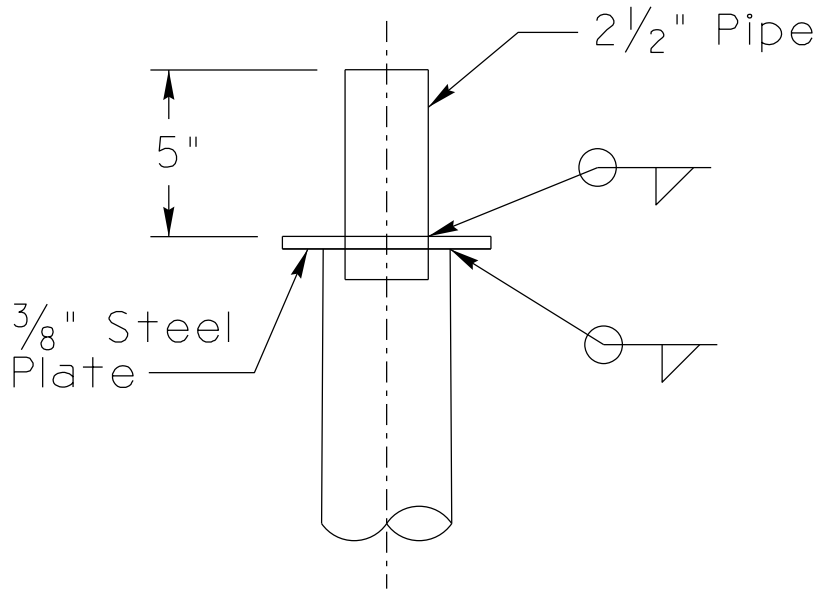


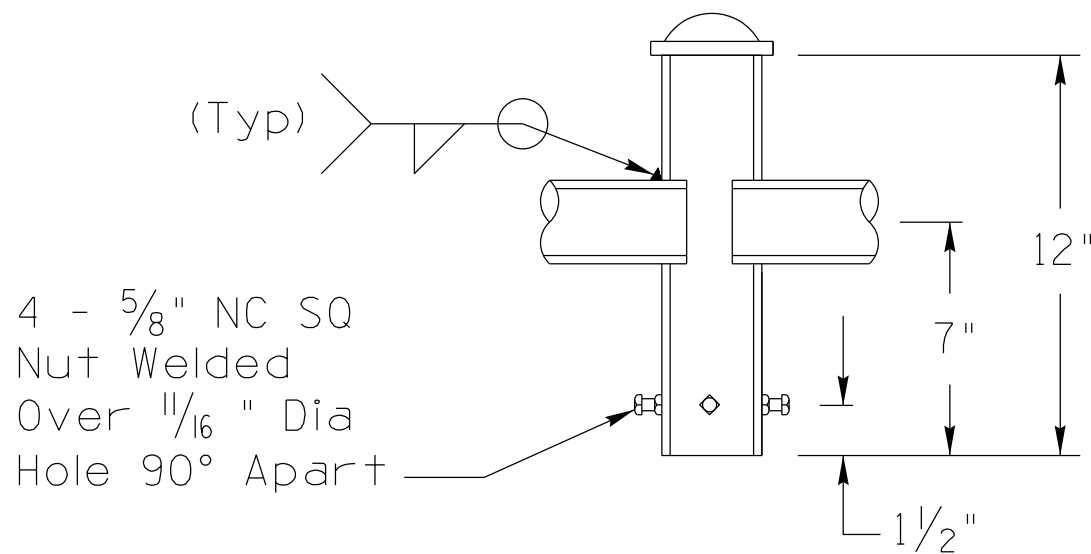
Note to Designer:
The information presented in this Standard Drawing has been prepared in accordance with recognized engineering principles and is for general use. It should not be used for specific application without competent professional examination and verification of its suitability and applicability by a licensed professional engineer. Contents within the inner border line shall not be altered.



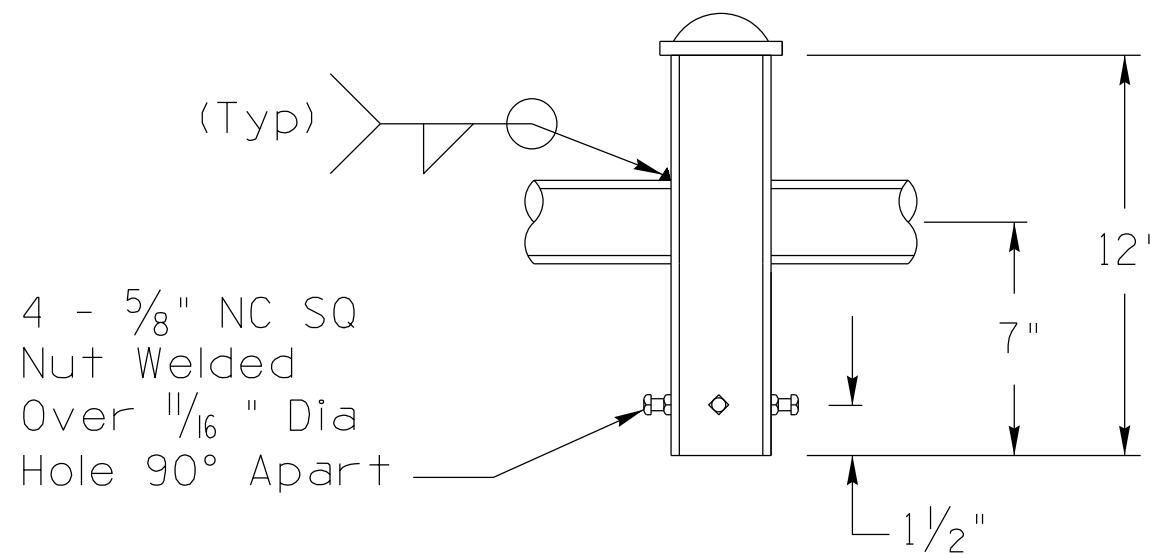
SECTION A-A



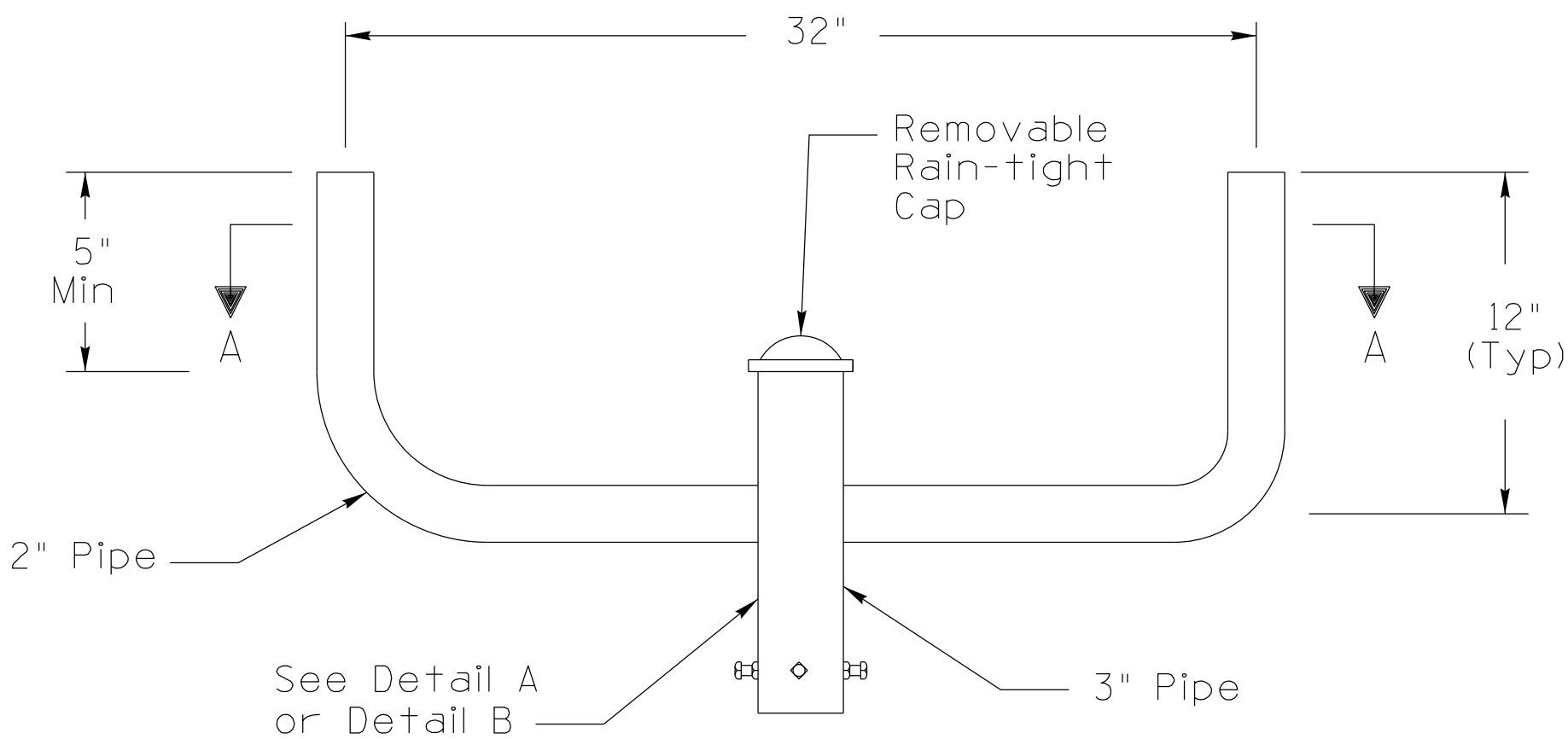
POLE TOP DETAIL



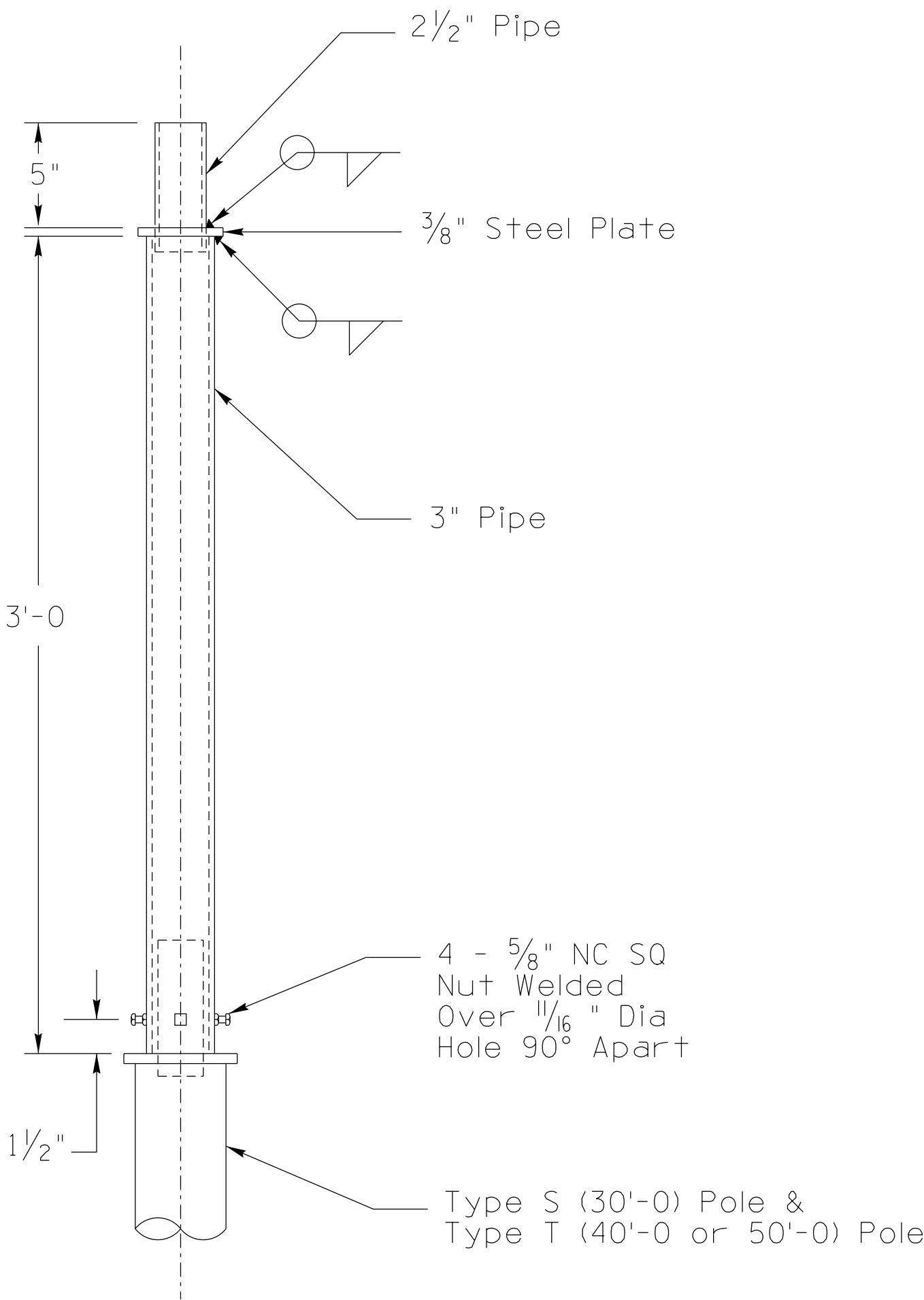
DETAIL A



DETAIL B



TWIN LUMINAIRE BRACKET AND SET SCREW DETAIL



POLE EXTENSION

STANDARDS ENGINEER A. ALZUBI	ARIZONA DEPARTMENT OF TRANSPORTATION INFRASTRUCTURE DELIVERY AND OPERATIONS DIVISION TRAFFIC SIGNAL AND LIGHTING STANDARD DRAWINGS	
RECOMMENDED FOR APPROVAL GROUP MANAGER M. HANNA		
APPROVED	TYPE S AND TYPE T STEEL TWIN LUMINAIRE MOUNTING BRACKET AND EXTENSIONS	DRAWING NO. T-SL 4.04
STANDARDS COMMITTEE APPROVED FOR DISTRIBUTION	11/22 DATE	