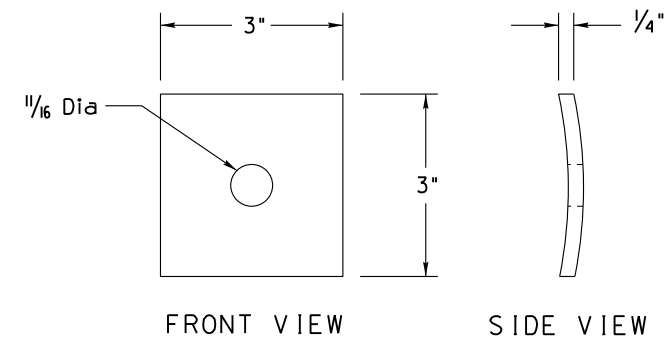
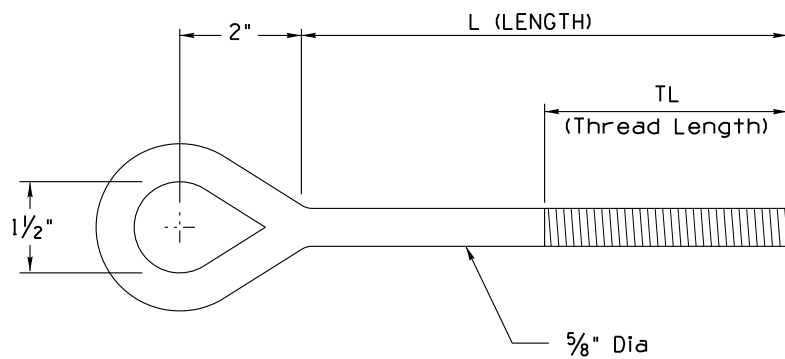
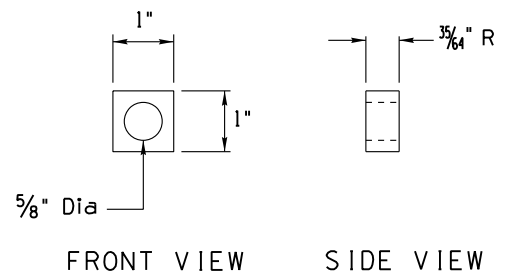


Note to Designer: The information presented in this Standard Drawing has been prepared in accordance with recognized engineering principles and is for general use. It should not be used for specific application without competent professional examination and verification of its suitability and applicability by a licensed professional engineer. Contents within the inner border line shall not be altered.



FRONT VIEW SIDE VIEW  
 SQUARE CURVED WASHER



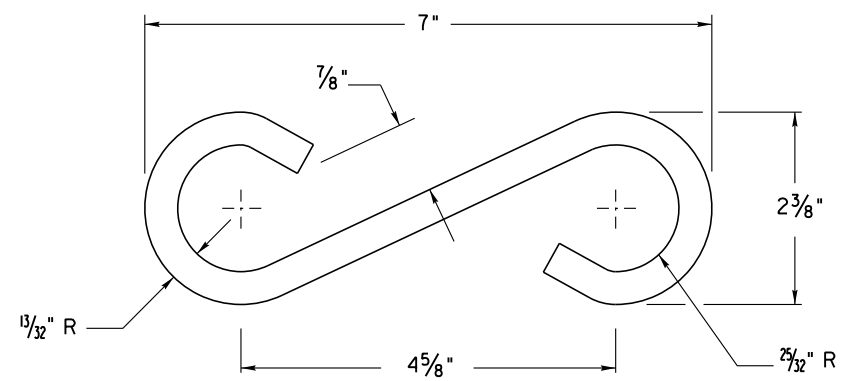
FRONT VIEW SIDE VIEW  
 SQUARE NUT

OVAL EYEBOLT LENGTH TABLE	
L	TL
8"	4"
10"	6"
12"	6"
14"	6"
16"	6"
18"	6"

**NOTES:**

1. Steel eyebolt shall meet ANSI C135.4, have a minimum breaking strength of 13,500 lbs, and be hot dip galvanized in accordance w/ASTM A153.
2. Steel square nut shall be ASTM A563.
3. Steel square curved washer shall be hot dip galvanized in accordance with ASTM A153.

**WOOD POLE OVAL EYEBOLT w/ SQUARE NUT AND SQUARE CURVED WASHER**  
 (For use with Tether Wire Only)



STEEL AND WOOD POLE TETHER WIRE S-HOOK  
 3/8" Round Mild ASTM A36 Galvanized

The use of this standard drawing on projects on the National Highway System (NHS) is not allowed, as this structure was not designed using the 2013 AASHTO Standard Specifications for Structural Supports for Highway Signs, Luminaires, and Traffic Signals, 6th Edition, (2013) (LTS-6). For use on the NHS, manufacturers shall design the structure per the requirements of LTS-6.

PRIOR DISTRIBUTION DATE 01/12

STANDARDS ENGINEER <b>A. ALZUBI</b>	ARIZONA DEPARTMENT OF TRANSPORTATION INFRASTRUCTURE DELIVERY AND OPERATIONS DIVISION TRAFFIC SIGNAL & LIGHTING STANDARD DRAWING	
RECOMMENDED FOR APPROVAL GROUP MANAGER <b>M. HANNA</b>	SPAN WIRE SIGNALS AND LIGHTING TYPICAL DETAILS	DRAWING NO. T.S. 15-1 (6 OF 6)
APPROVED STANDARDS COMMITTEE APPROVED FOR DISTRIBUTION		DATE 04/19