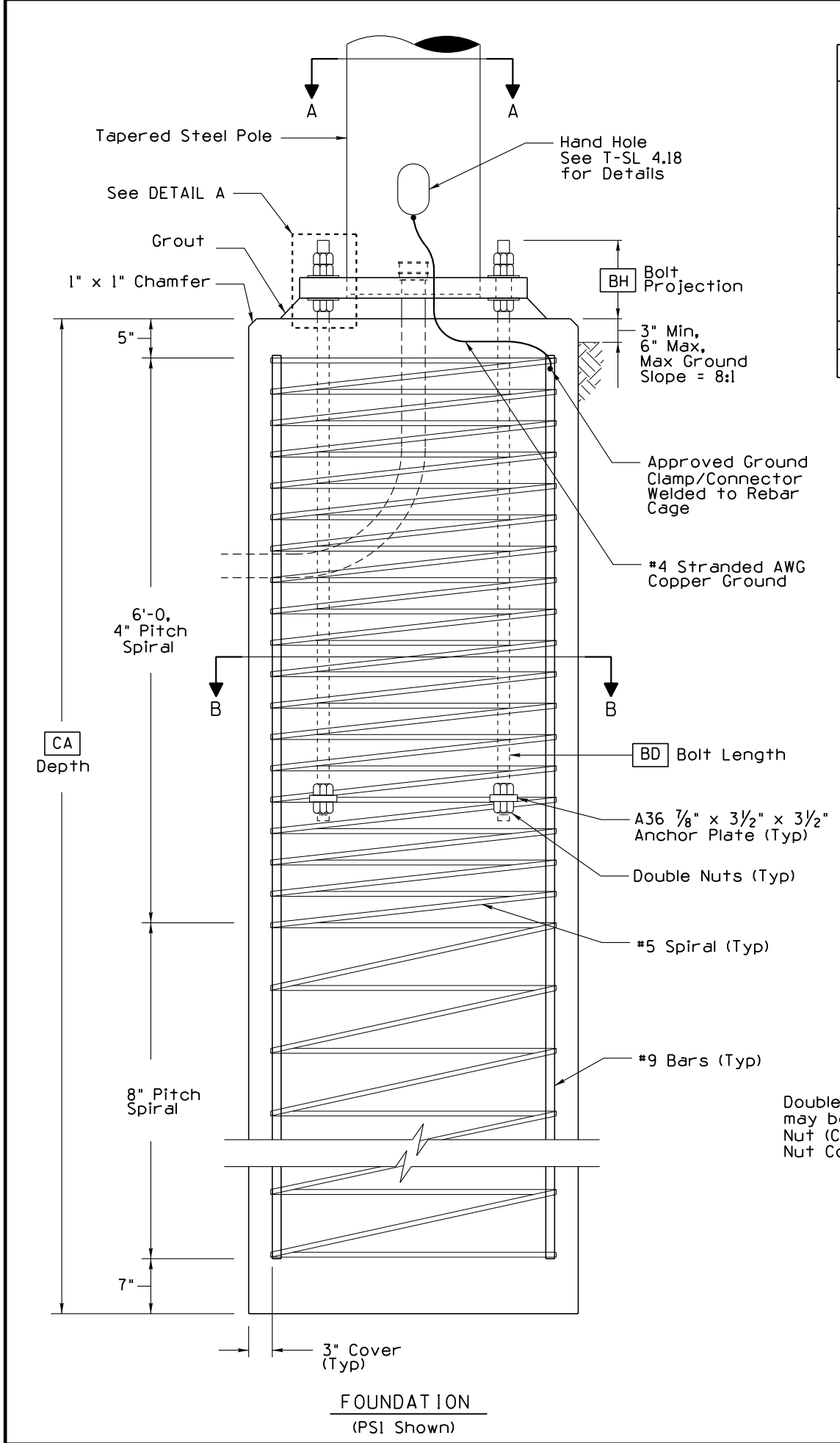
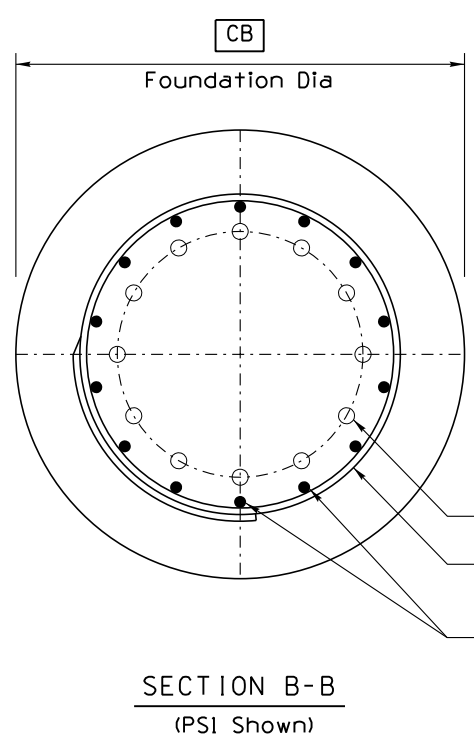
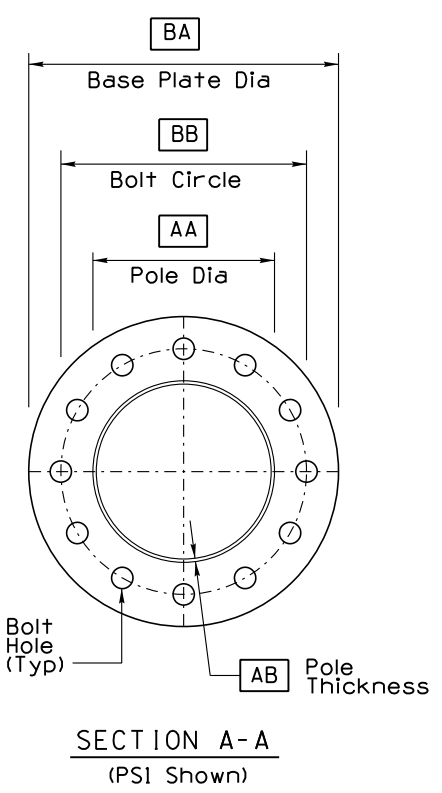


Note to Designer: The information presented in this Standard Drawing has been prepared in accordance with recognized engineering principles and is for general use. It should not be used for specific application without competent professional examination and verification of its suitability and applicability by a licensed professional engineer. Comments within the inner border line shall not be altered.

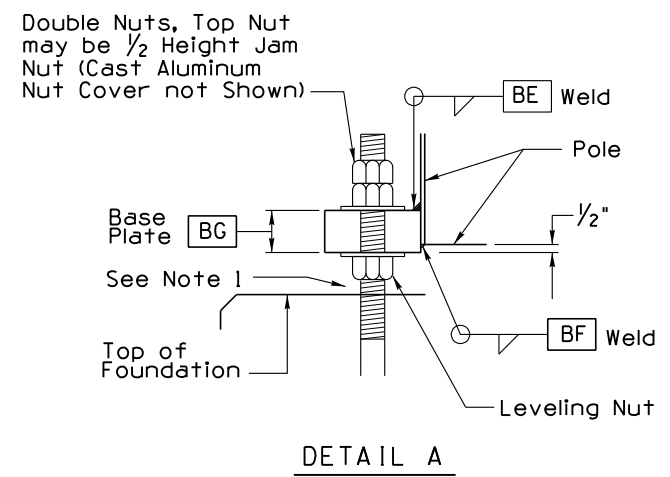
PRIOR DISTRIBUTION DATE 01/12



PERMANENT STRAIN POLE VARIABLES														
POLE TYPE	POLE			BASE CONNECTION								FOUNDATION		
	AA Dia (IN)	AB Thk (IN)	No. of Bolts	BA Base Plate Dia (IN)	BB Bolt Circle (IN)	BC Bolt Dia (IN)	BD Bolt Length (IN)	BE Weld (IN)	BF Weld (IN)	BG Base Plate Thickness (IN)	BH Projection Length (IN)	CA Depth (FT)	CB Dia (FT)	CC No. of Bars
PS1	17	0.3125	12	29	23	1.5	72	1/2	1/4	2.625	10	19	3.5	14 #9
PS2	19	0.3125	12	31	25	1.5	72	9/16	1/4	2.625	10	20	3.5	14 #9
PS3	21	0.3125	14	33	27	1.5	72	9/16	1/4	2.625	10	20	4	18 #9
PS4	23	0.3125	16	35	29	1.5	72	9/16	1/4	2.75	10	22	4	18 #9
PS5	25	0.3125	12	39	32	1.75	72	9/16	1/4	2.875	11.5	22	4.5	22 #9
PS6	27	0.375	14	41	34	1.75	72	5/8	5/16	3	11.5	24	4.5	22 #9



**ANCHOR BOLT NOTE:**  
 1. Maximum distance between top of foundation and bottom of leveling nut = one anchor bolt diameter.



The use of this standard drawing on projects on the National Highway System (NHS) is not allowed, as this structure was not designed using the 2013 AASHTO Standard Specifications for Structural Supports for Highway Signs, Luminaires, and Traffic Signals, 6th Edition, (2013) (LTS-6). For use on the NHS, manufacturers shall design the structure per the requirements of LTS-6.

STANDARDS ENGINEER <b>A. ALZUBI</b> RECOMMENDED FOR APPROVAL GROUP MANAGER <b>M. HANNA</b> APPROVED STANDARDS COMMITTEE APPROVED FOR DISTRIBUTION	ARIZONA DEPARTMENT OF TRANSPORTATION INFRASTRUCTURE DELIVERY AND OPERATIONS DIVISION <b>TRAFFIC SIGNAL &amp; LIGHTING</b> STANDARD DRAWING  SPAN WIRE SIGNALS AND LIGHTING STEEL POLE FOUNDATION DETAILS	DRAWING NO. <b>T.S. 15-1</b> (2 OF 6)
DATE: 04/19		