

NO. 1 2010 EDITION
 MADE BY C. COLE
 DATE 03/10
 DESCRIPTION OF REVISIONS
 NO. 3 4
 DATE 03/10
 MADE BY C. COLE
 DATE 03/10
 DESCRIPTION OF REVISIONS
 NO. 3 4

LIST OF MATERIALS		
Item	Qty	Description
①	1	Terminal Compartment For Side Mounting (T.S. 10-4-1)
* ②	2	1/2" Pipe, (Typ) 11 1/2" Long For Pedestrian Signal Heads
③	2	90° Elbow With Locking Device (T.S. 10-1-2)
④	4	1/2" Lock Nipple, See Note No. 12, T.S. 9-0
⑤	2	Signal, See Plans
⑥	1	Center Pipe, See Table
⑦	1	Tee, Drill & Tap For Setscrew
⑧	2	Neoprene Washer or Gasket
⑨	2	Flat Washer
⑩	1	1/2" Pipe Coupling, As Required
⑪	1	1/2" Pipe, See Table
⑫	2	90° Elbow
* ⑬	2	1/2" Pipe, (Typ) 12 1/2" Long For Pedestrian Signal Heads
* ⑭	1	1/2" Pipe, (Typ) 9 1/2" Long For Pedestrian Signal Heads
⑮	2	1/2" x 2" Galvanized Steel Bolt 13 UNC With Flat Washer And Lock Washer
⑯	2	1/2" Pipe, (Typ) 24 1/2" Long
⑰	2	1/2" Pipe, (Typ) 24" Long
⑱	1	Conduit Lock Nut (For "F", "M", & "R" Combination Only)
⑲	1	1/2" Pipe, (Typ) 3" Long (For "F", "M", & "R" Combination Only)
⑳	1	Malleable Hex Nut (For "F", "M", & "R" Combination Only)

* Special Pipe Length For Use Only With Ped Signal Single Head Units

Table For Item ⑪ Only

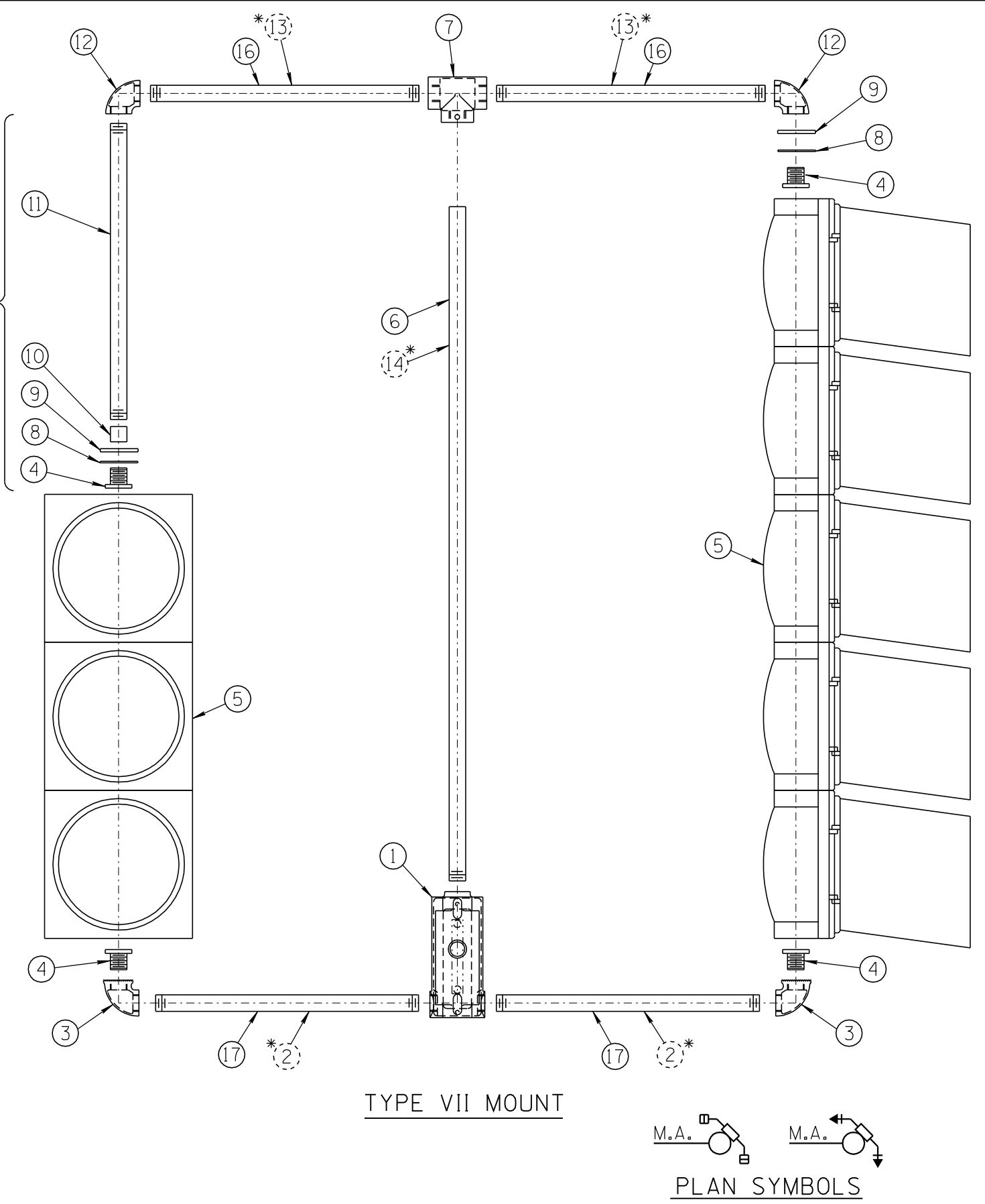
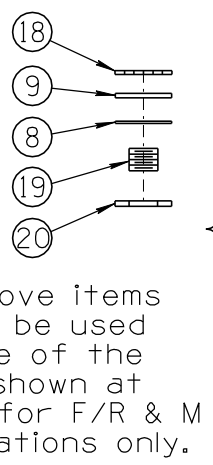
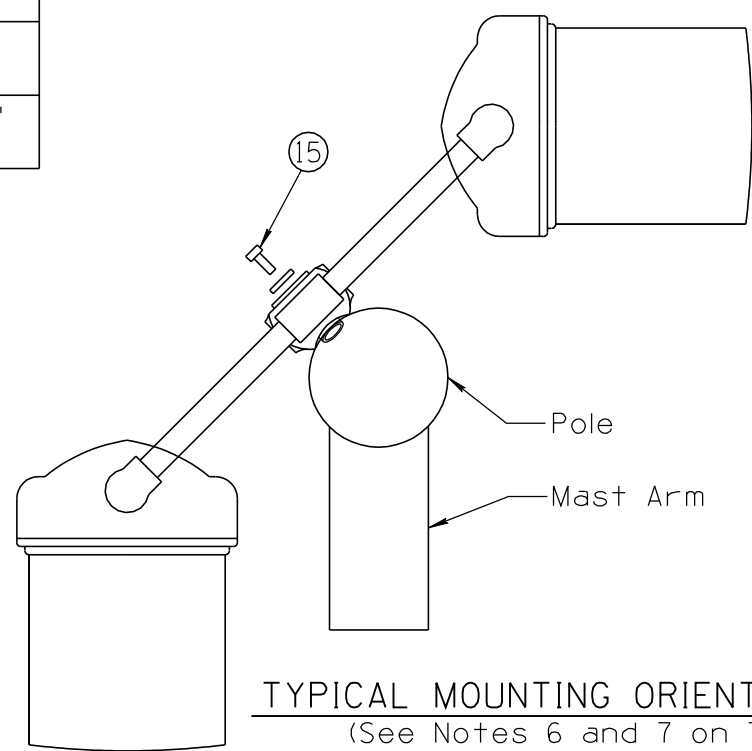
SIGNAL FACES COMBINATION	C	Q	F/R	M	H	G
C	0	40 1/2"	13 1/2"	13 1/2"	27"	27"
Q	40 1/2"	0	27"	27"	13 1/2"	13 1/2"
F/R	13 1/2"	27"	0	0	13 1/2"	13 1/2"
M	13 1/2"	27"	0	0	13 1/2"	13 1/2"
H	27"	13 1/2"	13 1/2"	13 1/2"	0	0
G	27"	13 1/2"	13 1/2"	13 1/2"	0	0

Table To Be Used For Finding Pipe Length

Table For Item ⑥ Only

SIGNAL FACES COMBINATION	C	Q	F/R	M	H	G
C	21"	61 1/2"	34 1/2"	34 1/2"	48"	48"
Q	61 1/2"	61 1/2"	61 1/2"	61 1/2"	61 1/2"	61 1/2"
F/R	34 1/2"	61 1/2"	34 1/2"	34 1/2"	48"	48"
M	34 1/2"	61 1/2"	34 1/2"	34 1/2"	48"	48"
H	48"	61 1/2"	48"	48"	48"	48"
G	48"	61 1/2"	48"	48"	48"	48"

Threads On One End Only



NOT TO SCALE

DESIGN APPROVED SIGNATURE	ARIZONA DEPARTMENT OF TRANSPORTATION INTERMODAL TRANSPORTATION DIVISION TRAFFIC SIGNALS AND LIGHTING STANDARD DRAWINGS	REVISION 03/10
APPROVED FOR DISTRIBUTION ON FILE	TYPE VII MOUNTING ASSEMBLY	DRAWING NO. T.S. 9-5
		SHEET NO. 1 OF 1