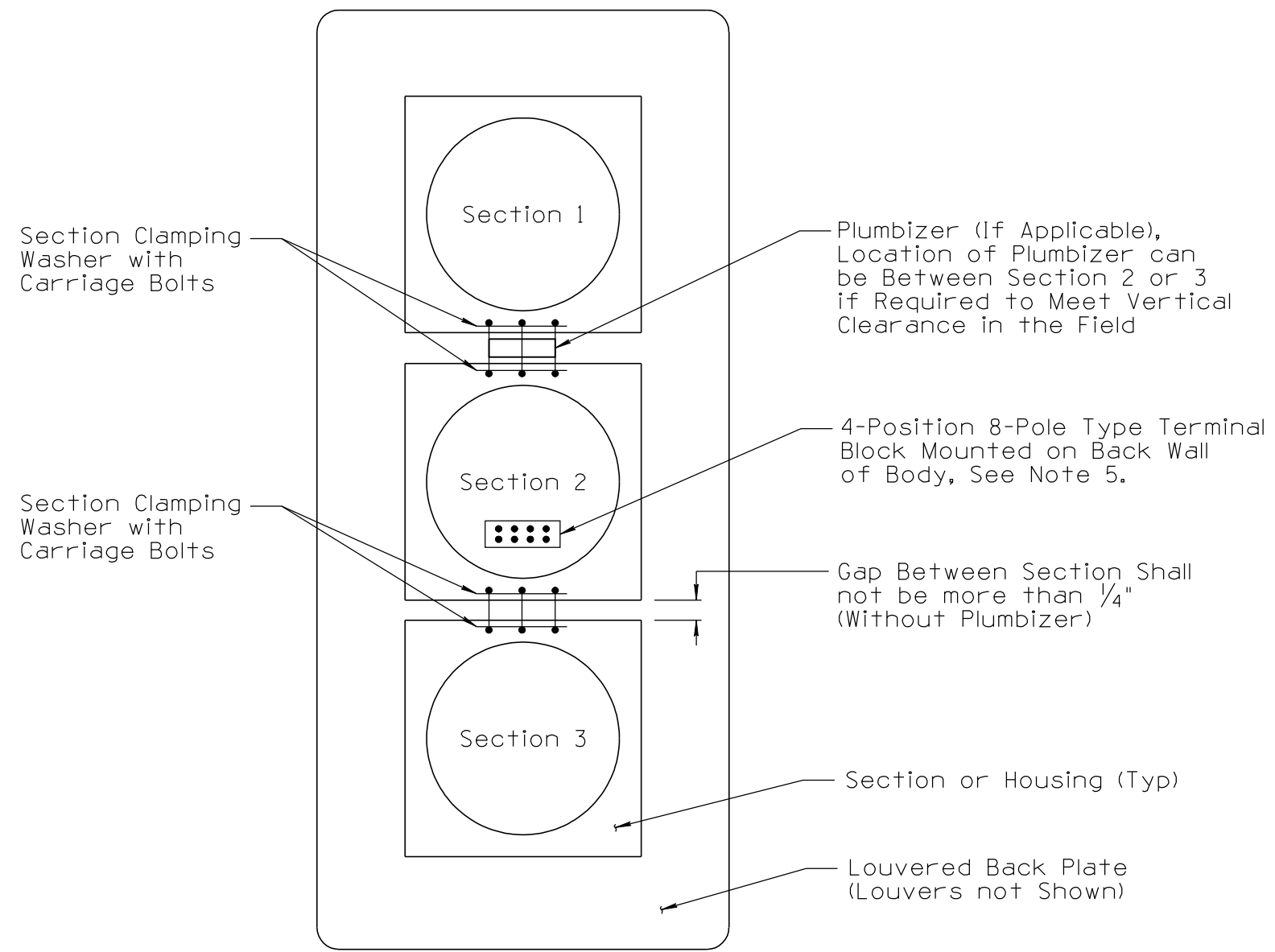
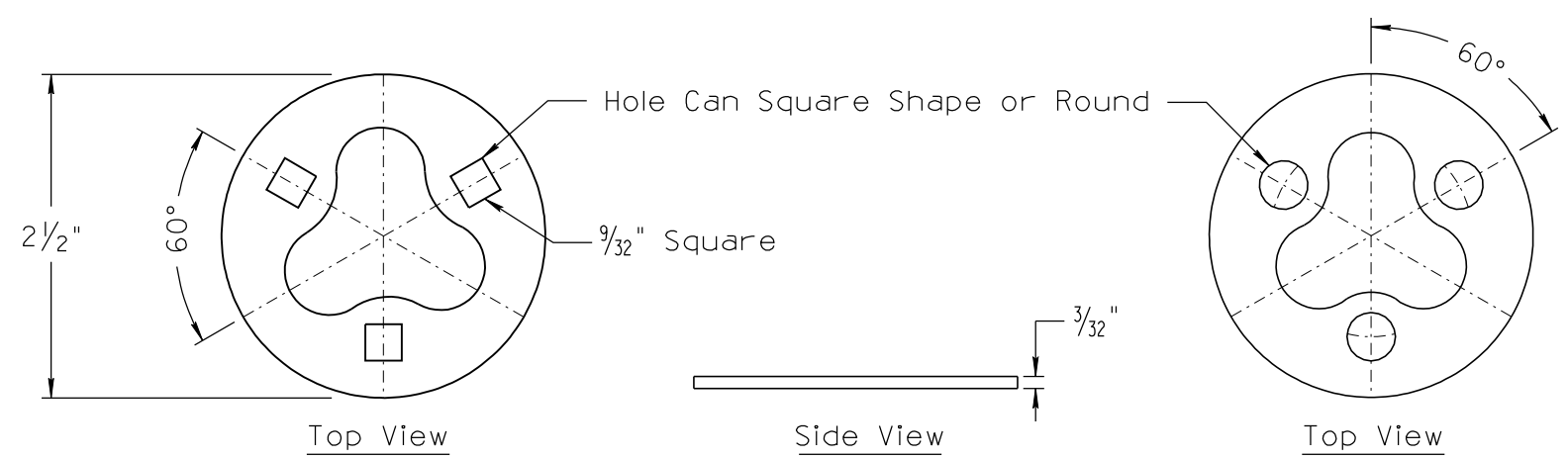


NO.	1	2010 EDITION	MADE BY	C. COLE	DATE	03/10
NO.	2	2012 - ADDED ROUND HOLE SECTION CLAMP WASHER	MADE BY	C. COLE	DATE	01/12
NO.	3					
NO.	4					



TRAFFIC SIGNAL HOUSING



SECTION CLAMPING WASHER
(Stainless Steel or Galvanized)

NOTES:

1. As a minimum, assembled traffic signal face sections shall meet or exceed the applicable requirements of MUTCD and ITE Equipment and Material Standards Chapter 2 Vehicle Traffic Control Signal Heads Section 3.0 Physical and Mechanical Requirements.
2. Sections shall be connected together with 3 carriage bolts (1/4"-20 x 1 3/4" to 2"), two clamping washers and 3 hex nuts arrangement, common to makes of ITE compliant signal housings (such as those manufactured by Siemens (Eagle) and McCain). Once fully assembled the traffic signal shall be dust and weather-proof. If the traffic signal includes a plumbizer mount, the length of the carriage bolts needs to be longer.
3. Unless otherwise specified the basic configuration of sections shall always be a red signal face on top, yellow signal face in the middle and green signal face on the bottom. Exceptions are made to this requirement for protective permissive turns and dual indication arrow faces, See T.S. 8-1, 8-2 and 8-3 for requirements. All signal face modules (ball and arrows) within the assembly shall be from the same manufacturer and model.
4. A removable dust cap or plug shall be provided on both open ends, see T.S. 9 & 10 Series for details, if and as applicable to the signal mount used. This dust or plug on the bottom section shall not be water proof just weather tight. The top cap or plug shall be sealed in a manner to be waterproof.
5. As a minimum, unless required by the number of signals within the section, one spade type four-position two sided removable terminal block shall be provided per traffic signal face assembly. Additional or larger capacity terminal blocks are to be provided as needed. The common or neutral terminal will require a multiple (3 or more) spade connector. Each terminal block shall be secured to the back inside wall body with two stainless steel screws.
6. All interior screws, fittings, washers, bolts, connectors, terminal blocks shall be stainless steel, plated steel aluminum or brass that is corrosion resistant.

NOT TO SCALE

DESIGN APPROVED	ARIZONA DEPARTMENT OF TRANSPORTATION INTERMODAL TRANSPORTATION DIVISION TRAFFIC SIGNALS AND LIGHTING STANDARD DRAWINGS	REVISION 01/12
SIGNATURE		DRAWING NO. T.S. 8-4
APPROVED FOR DISTRIBUTION	VEHICLE TRAFFIC SIGNAL HOUSING/SECTION DETAILS	SHEET NO. 3 OF 4
ON FILE		