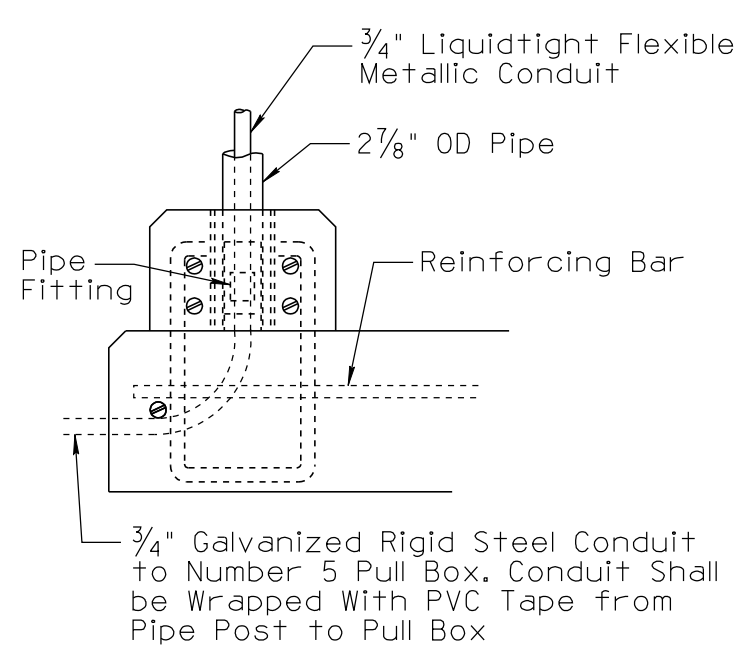
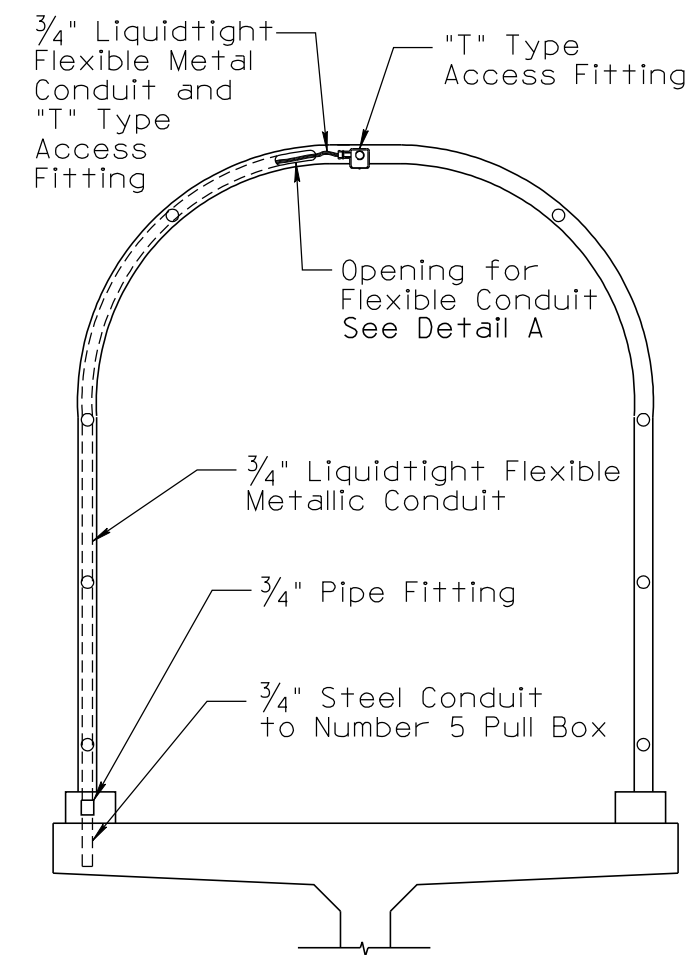


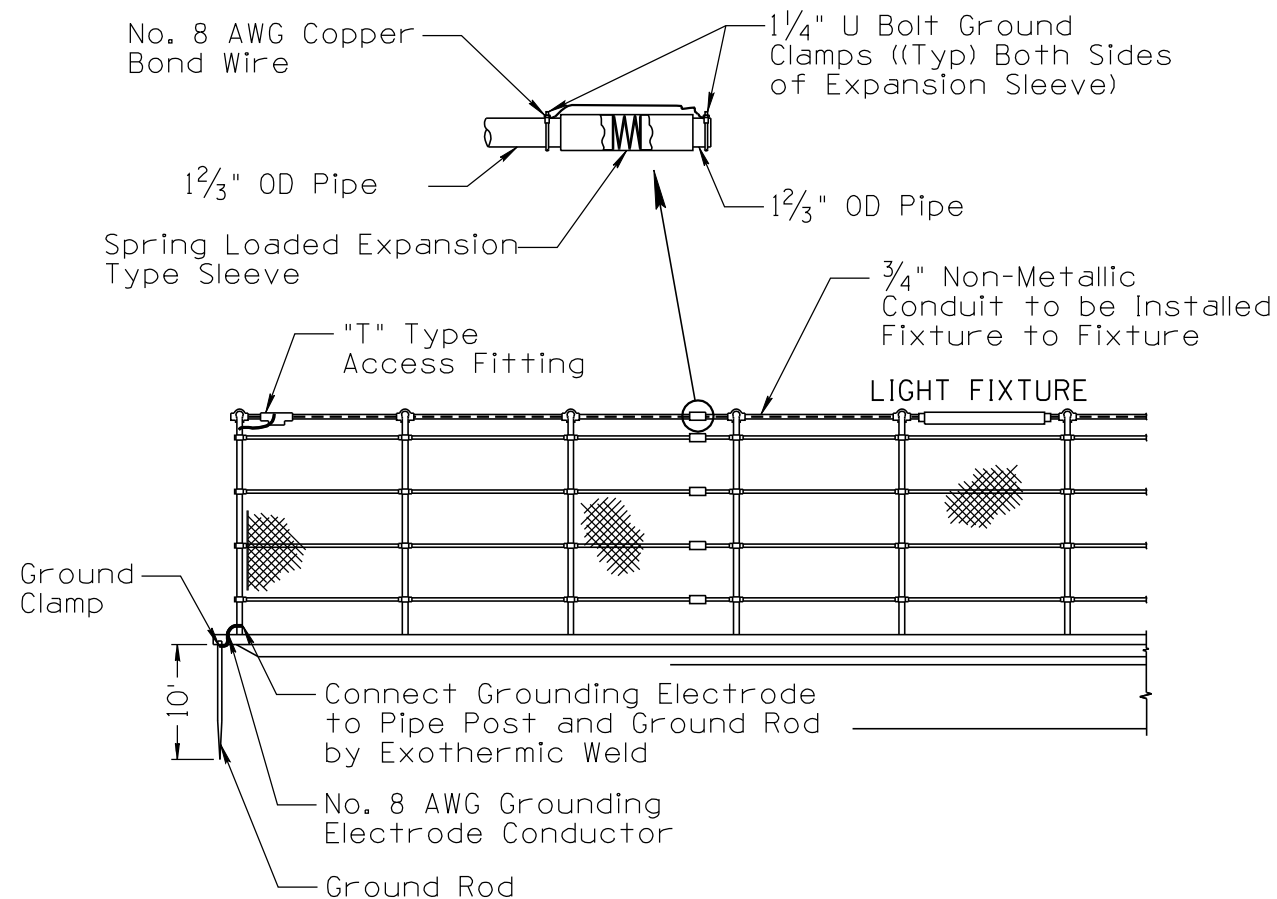
DATE: _____ MADE BY: _____ NO. 3 4 DATE: 03/10 MADE BY: C. COLE NO. 1 2010 EDITION DESCRIPTION OF REVISIONS: _____



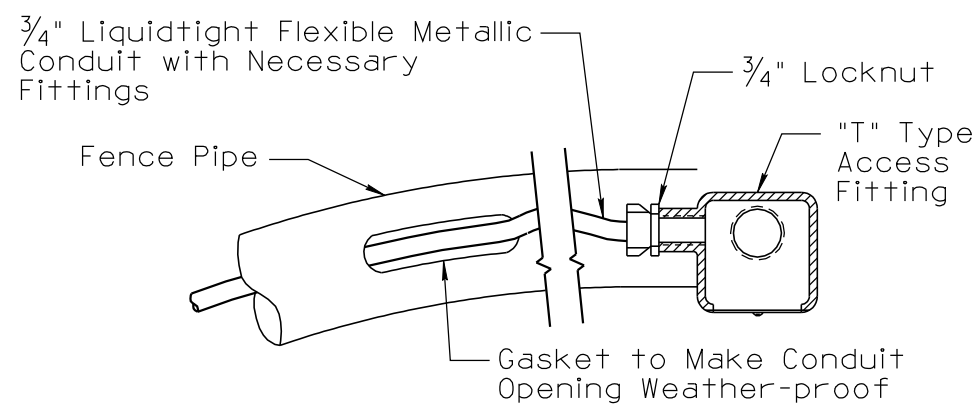
**APPROACH SLAB TO FENCE
CONDUIT CONNECTION**



**FLEXIBLE CONDUIT TO ACCESS FITTING
CONNECTION DETAIL**



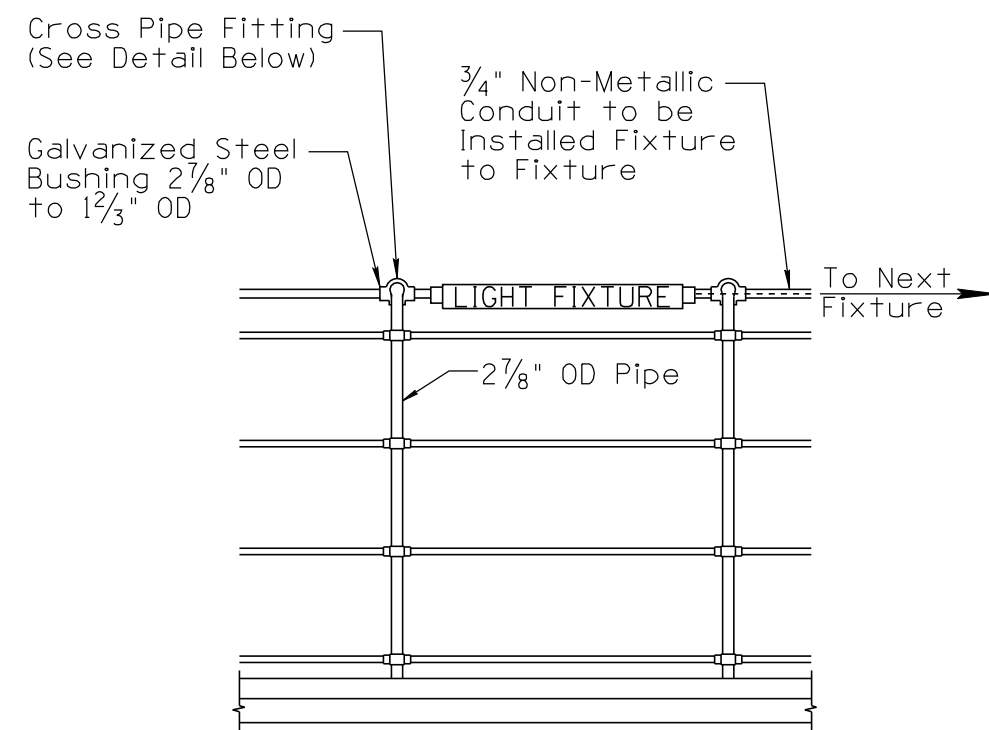
**CONDUIT CROSSING OF BRIDGE
EXPANSION JOINT**



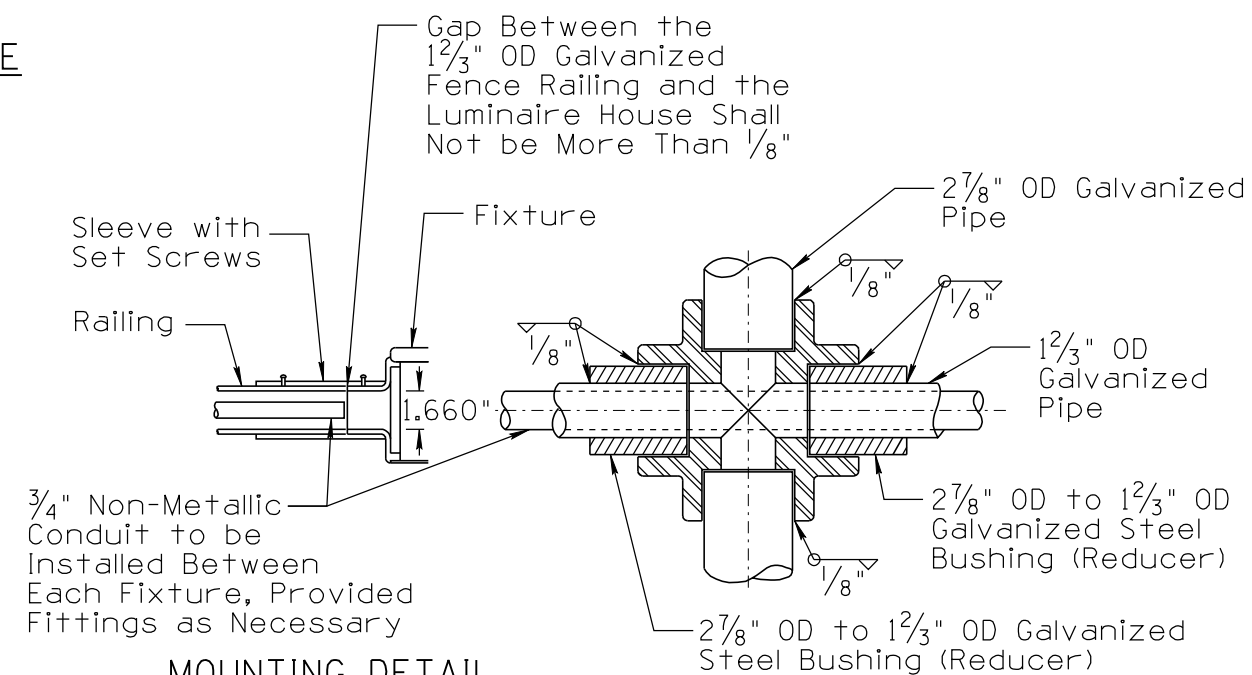
DETAIL A

NOTES:

1. Install 3/4" liquidtight flexible metal conduit and coupling into access fitting.
2. All connections shall be weather-proof and liquid-tight.
3. Exposed flexible conduit shall be securely fastened to the fence fabric to help prevent it from being pulled down by vandals.
4. All fixtures shall be bonded in an approved fashion.



MOUNTING DETAIL



MOUNTING DETAIL

CROSS PIPE FITTING DETAIL

Use E70XX electrode for galvanized welding all around bushing and pipe for a water-proofed connection. Paint weld with 500-107 number 4 (zinc) paint.

DESIGN APPROVED SIGNATURE	ARIZONA DEPARTMENT OF TRANSPORTATION INTERMODAL TRANSPORTATION DIVISION TRAFFIC SIGNALS AND LIGHTING STANDARD DRAWINGS	REVISION 03/10
APPROVED FOR DISTRIBUTION ON FILE	PEDESTRIAN BRIDGE LIGHTING DETAILS	DRAWING NO. T.S. 14-2
		SHEET NO. 1 OF 1

NOT TO SCALE