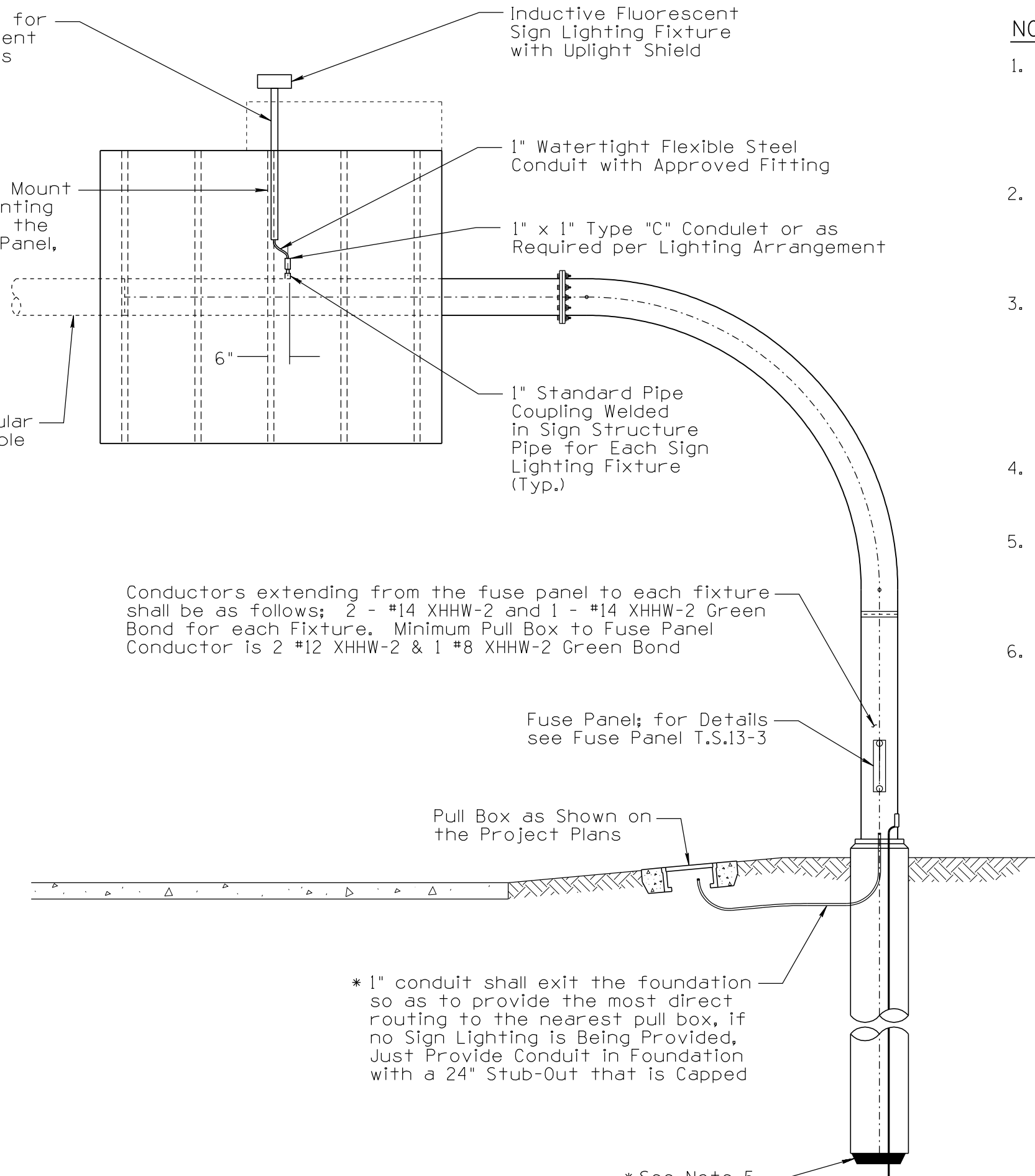


DATE	
MADE BY	
DESCRIPTION OF REVISIONS	
NO	3
DATE	03/10
MADE BY	C. COLE
DESCRIPTION OF REVISIONS	
NO	1
EDITION	2010
NO	2

Sign Lighting Mount, for Details and Attachment see ADOT Structures Section Standard Drawings SD 9.10 and SD 9.20 Series

Attach Sign Lighting Mount to Vertical Sign Mounting Bracket, Located at the Center of the Sign Panel, See Note 1.

Continuation of Tubular Structure if Applicable



Conductors extending from the fuse panel to each fixture shall be as follows; 2 - #14 XHHW-2 and 1 - #14 XHHW-2 Green Bond for each Fixture. Minimum Pull Box to Fuse Panel Conductor is 2 #12 XHHW-2 & 1 #8 XHHW-2 Green Bond

Fuse Panel; for Details see Fuse Panel T.S.13-3

Pull Box as Shown on the Project Plans

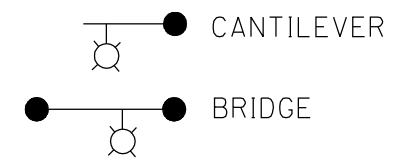
* 1" conduit shall exit the foundation so as to provide the most direct routing to the nearest pull box, if no Sign Lighting is Being Provided, Just Provide Conduit in Foundation with a 24" Stub-Out that is Capped

* See Note 5

NOT TO SCALE

NOTES:

1. In the event a vertical sign mounting bracket is not located where the luminaire is to be located then the contractor shall furnish and install a vertical sign mounting bracket. For details see Structures Section Tubular Sign Connection Detail sheets No. SD 9.10 and SD 9.20 Series.
2. The sign lighting mount and all attached components shall be fully galvanized in accordance with ASTM-A-123. Any damage to the galvanizing during construction shall be refinished in accordance with the Standard Specifications.
3. When the project plans require two or more sign lighting fixtures per sign panel, the sign lighting mounts shall be attached to the vertical sign mounting brackets. If required, the contractor shall furnish and install vertical sign mounting brackets. The pipe coupling, conduit and fittings shall also be located near the sign mounting brackets. For details see Structures Section Tubular Sign Connection Detail sheets SD 9.10 and SD 9.20 series.
4. Items marked with an asterisk (*) shall be installed at all sign locations. All other items shall be installed as called for on plans.
5. All sign structure foundations shall have 25' of No. 8 AWG bare copper conductor coiled or a copper grounding plate and placed at the bottom of the excavation before the concrete is poured and shall be connected to the pole ground lug in the hand hole.
6. All sign lighting shall be inductive fluorescent.



PLAN SYMBOLS

DESIGN APPROVED	ARIZONA DEPARTMENT OF TRANSPORTATION INTERMODAL TRANSPORTATION DIVISION TRAFFIC SIGNALS AND LIGHTING STANDARD DRAWINGS	REVISION 03/10
APPROVED FOR DISTRIBUTION	SIGN LIGHTING DETAIL FOR TUBULAR SIGN STRUCTURES	DRAWING NO. T.S. 13-1
		SHEET NO. 1 OF 1