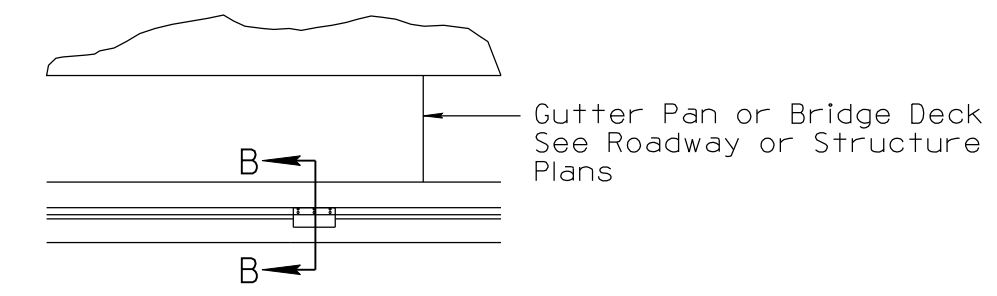
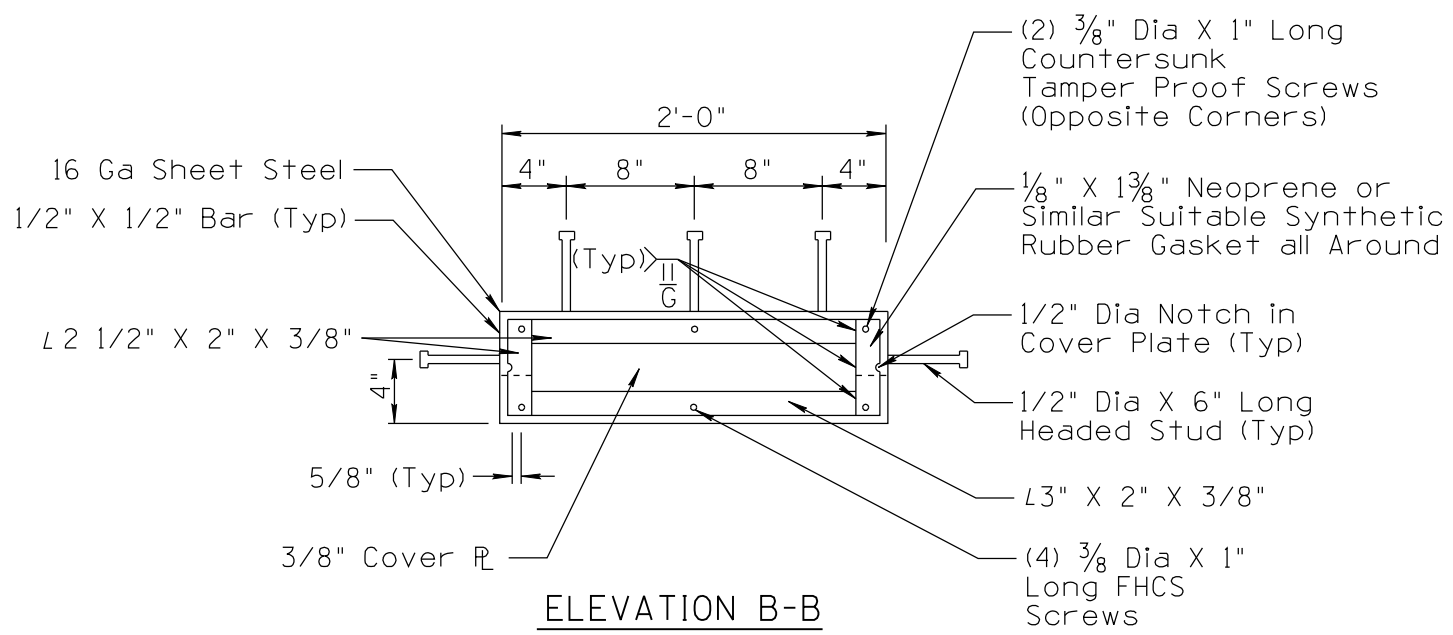


NO	DESCRIPTION OF REVISIONS	DATE	MADE BY
1	2010 EDITION	03/10	C. COLE
2	2011 EDITION - ADDED NOTE 4	09/11	C. COLE



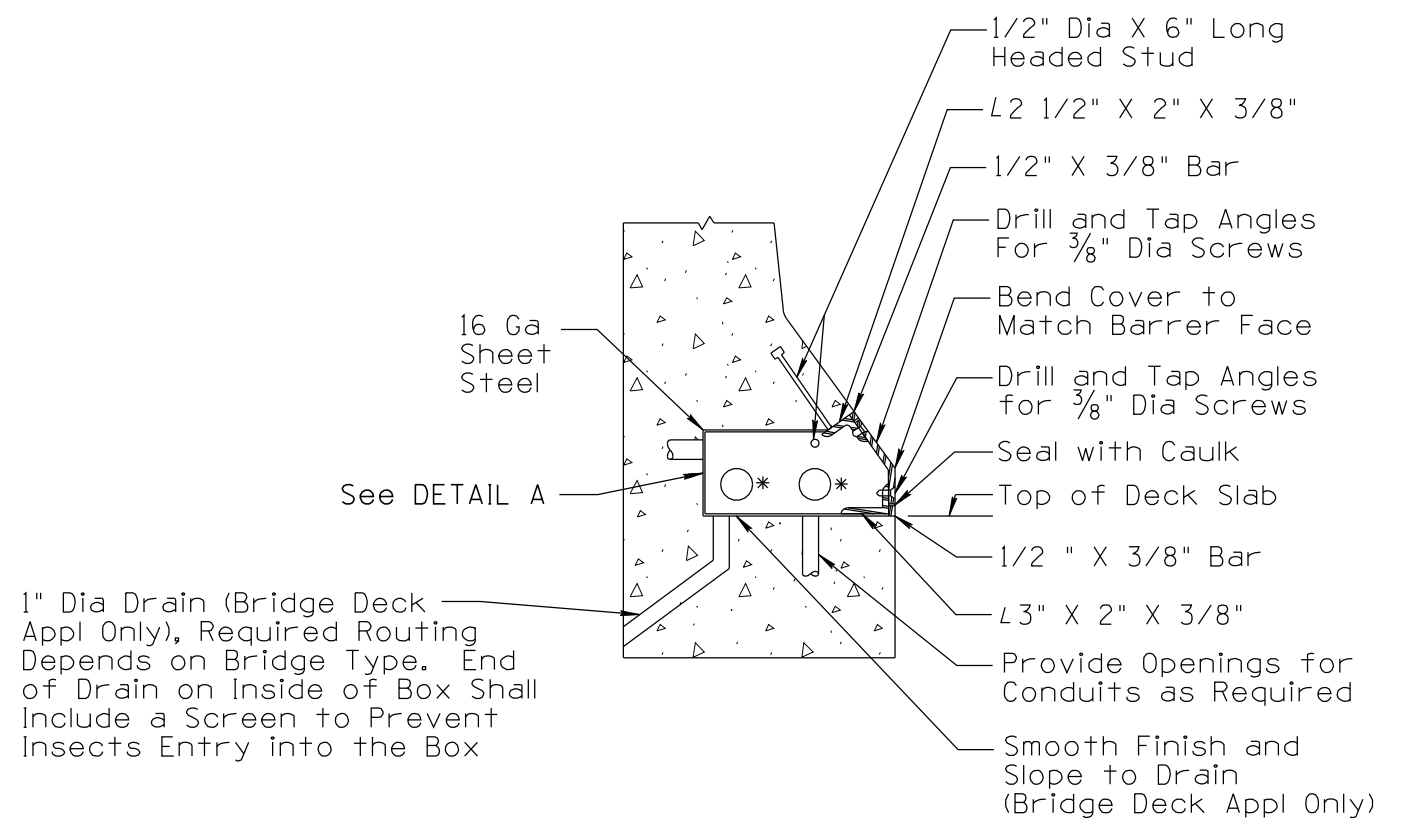
BOX ON BARRIER FACE DETAIL



ELEVATION B-B

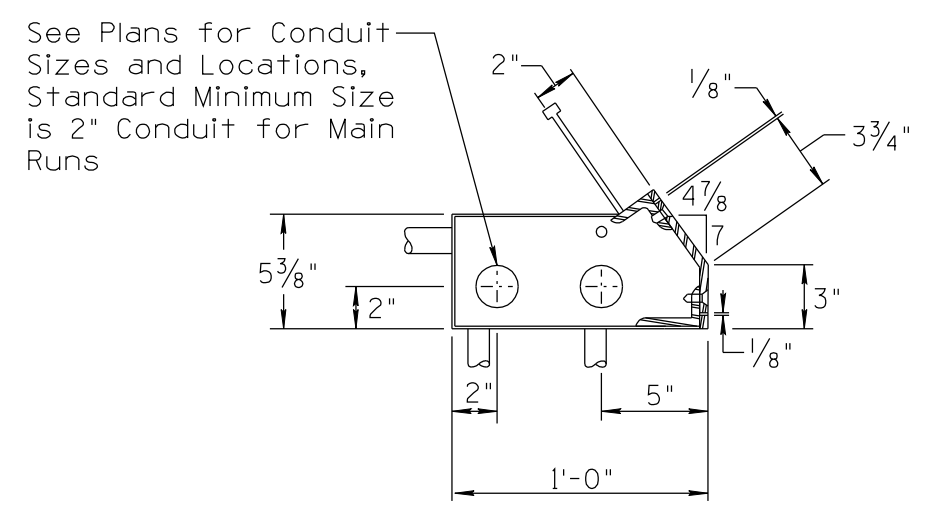
SPECIAL NOTE:

1. These junction boxes should only be used if there is no other reasonable alternative to provide access to conduits. The box shall only be applied to concrete barrier shape that is compatible.
2. Interface between angle and concrete shall be sealed with a 25-year silicone caulk.
3. See sheet 2 of 2 for other requirements.
4. The steel box shell and the steel lid shall be bonded in an approved fashion.



SECTION B-B

* Conduit Placement As Needed



DETAIL A

NOT TO SCALE

DESIGN APPROVED	ARIZONA DEPARTMENT OF TRANSPORTATION INTERMODAL TRANSPORTATION DIVISION TRAFFIC SIGNALS AND LIGHTING STANDARD DRAWINGS	REVISION 09/11
SIGNATURE		DRAWING NO. T.S. 1-8
APPROVED FOR DISTRIBUTION	ON FILE	SHEET NO. 1 OF 2
	FRONT OF BARRIER JUNCTION BOX	