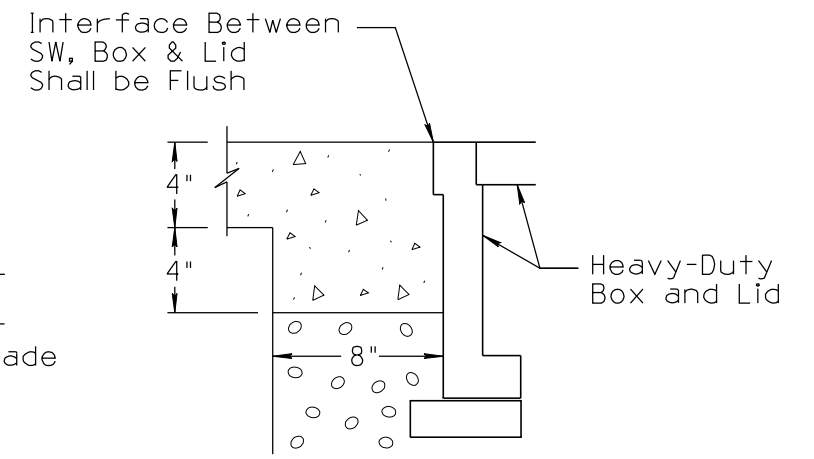
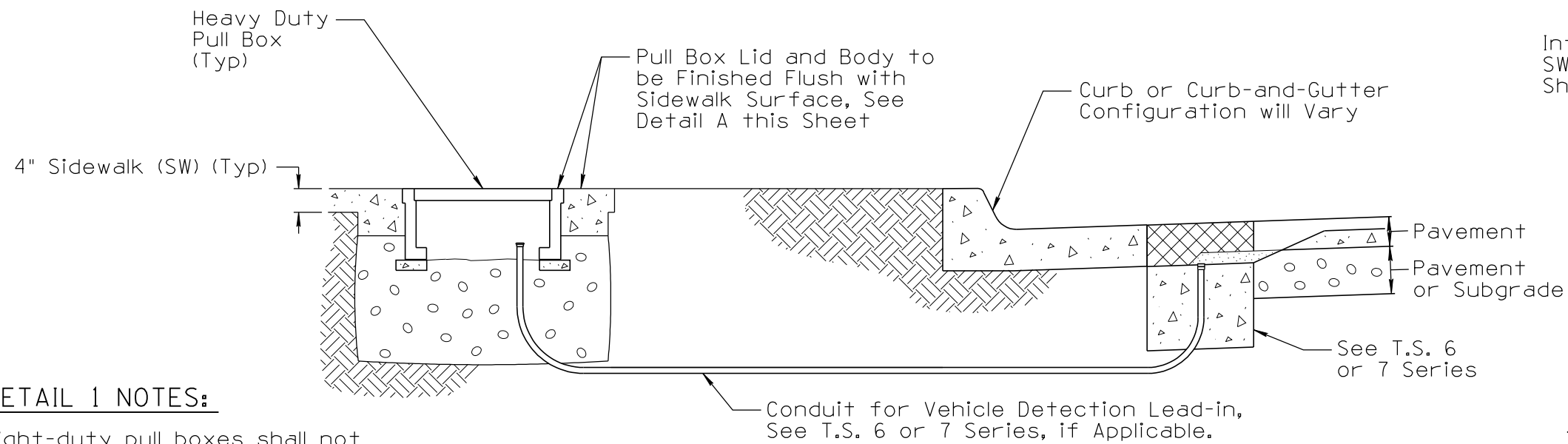
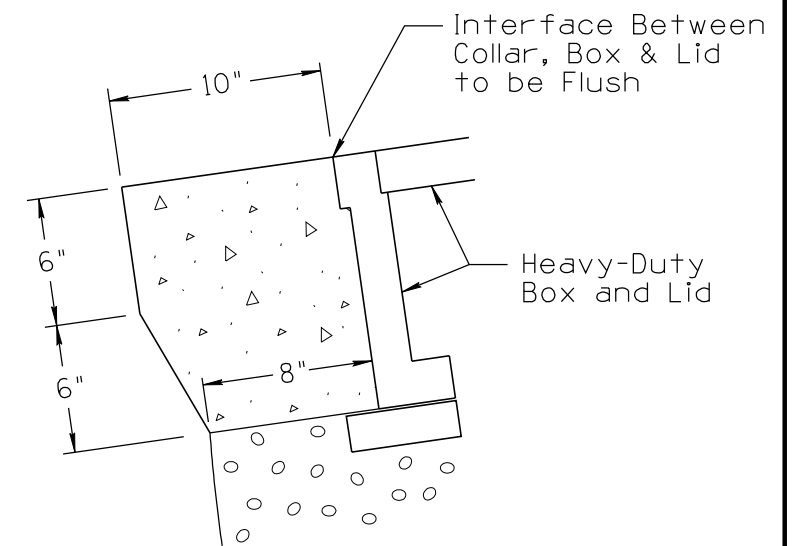


NO.	DATE	MADE BY	DESCRIPTION OF REVISIONS
1	03/10	C. COLE	2010 EDITION - UPDATED VERBIAGE, ADDED NO. 4 AND 6 PULL BOX CONDUIT DEPTH
2	09/11	C. COLE	2011 EDITION -
3			
4			



DETAIL A
(Cast-In-Place with Sidewalk, Treatment to be All Around Box)

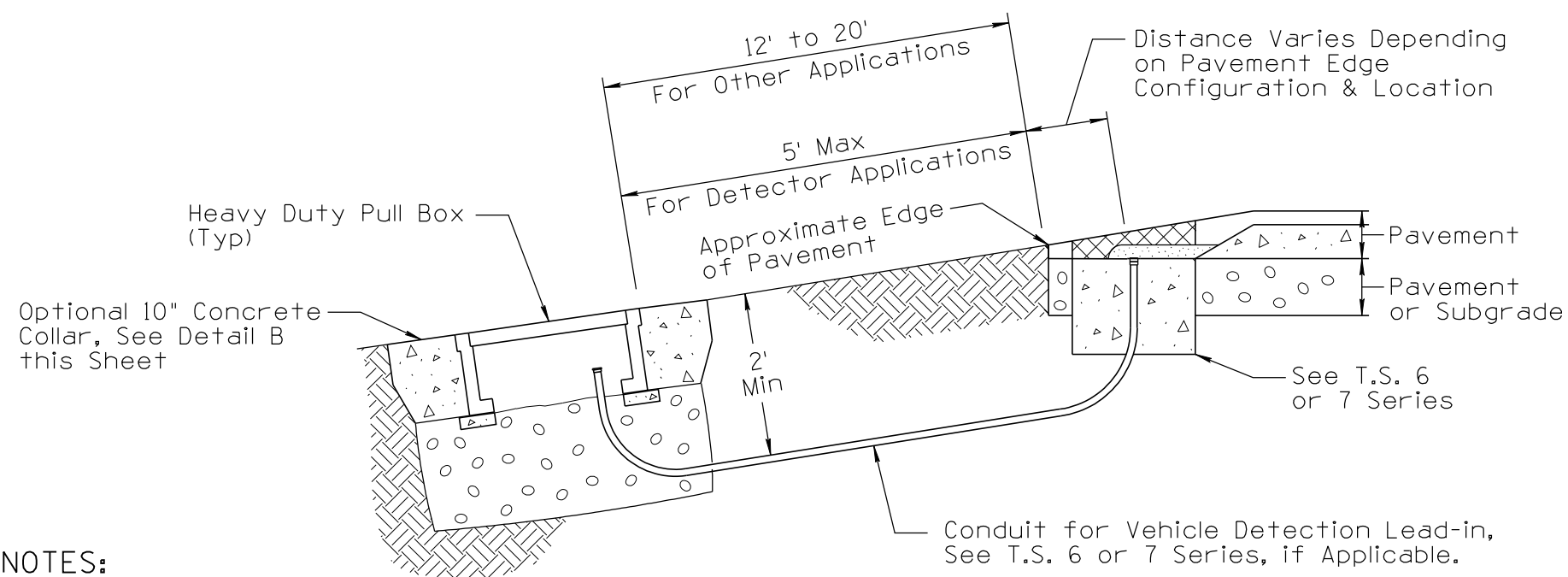


DETAIL B
(Pull Box Concrete Collar, Treatment to be All Around Box)

DETAIL 1 NOTES:

1. Light-duty pull boxes shall not be used in areas where they will be driven over.
2. Pull boxes in sidewalks shall be placed so there is positive drainage away from the box lid
3. Placing pull box in sidewalks shall be avoided if possible.

PULL BOX INSTALLATION IN SIDEWALK - DETAIL 1
(With Curb and Gutter or Just Curb)



DETAIL 2 NOTES:

1. Pull boxes shall not be placed in drainage ditches or retention basins. Light-duty pull boxes may be used if offsets from traveled way are over 20' and the boxes are not in areas where they will be driven over.
2. In snow removal area, boxes shall be installed directly behind the pole unless specified otherwise by the engineer.

PULL BOX INSTALLATION IN SIDE SLOPE - DETAIL 2
(Without Curb and Gutter)

GENERAL NOTE:

1. See plan for actual pull boxes, locations conduit routing, and sizes.
2. Depth of pavement & subgrade varies.

NOT TO SCALE

DESIGN APPROVED	ARIZONA DEPARTMENT OF TRANSPORTATION INTERMODAL TRANSPORTATION DIVISION TRAFFIC SIGNALS AND LIGHTING STANDARD DRAWINGS	REVISION 09/11
SIGNATURE		DRAWING NO. T.S. 1-4
APPROVED FOR DISTRIBUTION	ON FILE	SHEET NO. 3 OF 3