


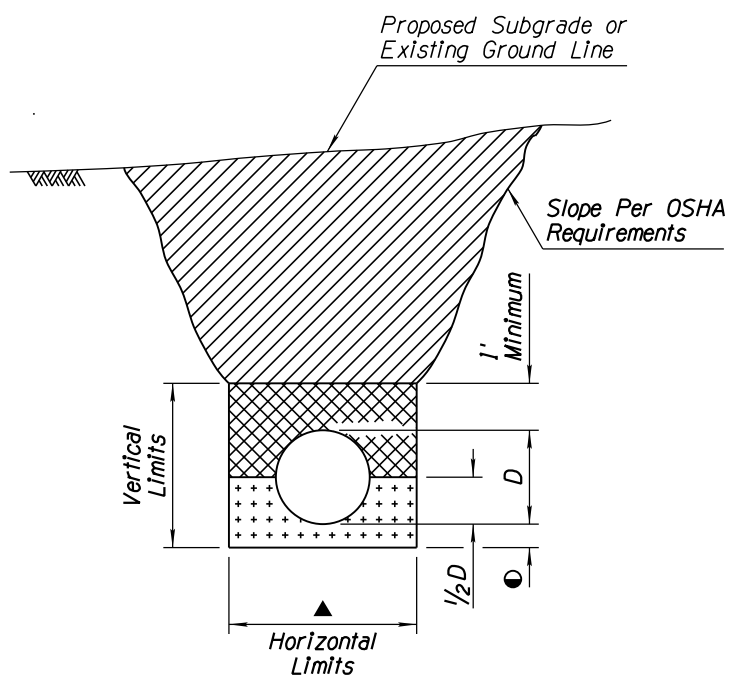


NO	DESCRIPTION OF REVISIONS	MADE BY	DATE
1	REVISED SPECIFICATIONS	RLF	9/04
2			
3			
4			

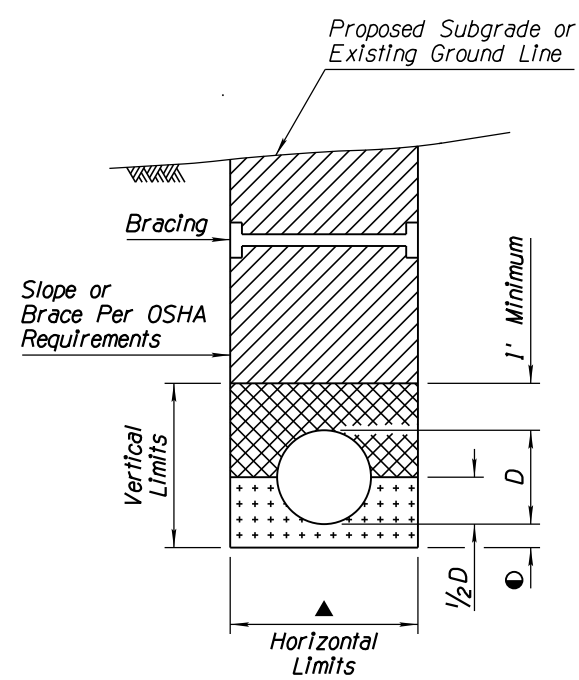
**GENERAL NOTES**

1. Pipes shall be installed either in a trench condition or in a non-trench condition in natural ground or in embankment.
  2. In a trench condition, the vertical and horizontal limits shall be maintained. If horizontal limits are exceeded or the vertical limits are not maintained, a non-trench condition exists.
  3. Bracing and sloping shall conform to OSHA requirements.
  4. Pipe backfill may be bedding material.
  5. In a non-trench condition, the embankment for pipe stability shall be constructed in lifts to the limits shown in the detail simultaneously with the bedding material and pipe backfill. If the contractor chooses to construct it as a trench condition, the embankment shall be constructed before excavating the trench.
- D - Outside diameter of full circle pipe or outside dimension (span or rise) of arch, arch pipe, elliptical pipe.
- T - Minimum wall thickness for NRCIPCP: See Plans.
- ① ▲ For  $D < \text{than } 4'$ :  $D + 6"$  each side, minimum  
 $D + 2'$  each side, maximum
- ① For  $D \geq \text{than } 4'$ :  $D + 1'$  each side, minimum  
 $D + 3'$  each side, maximum

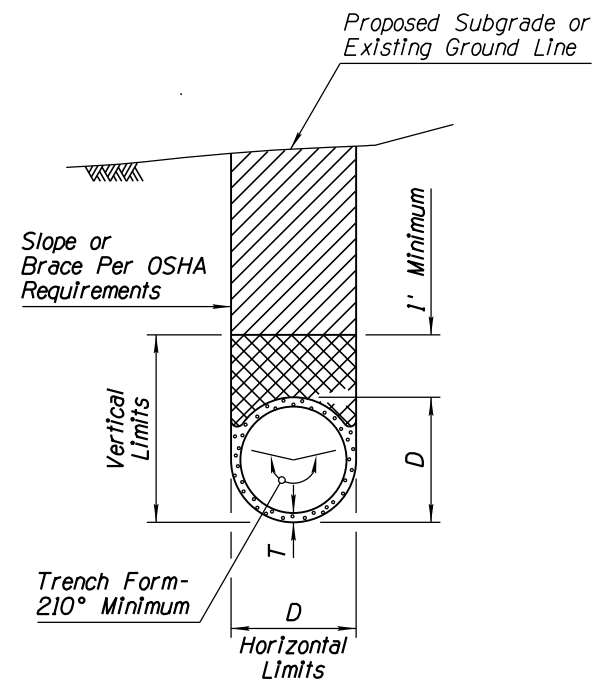
- - 6 inches except when on unyielding or unstable material. See Std Specs.
-  TRENCH BACKFILL
-  PIPE BACKFILL
-  BEDDING



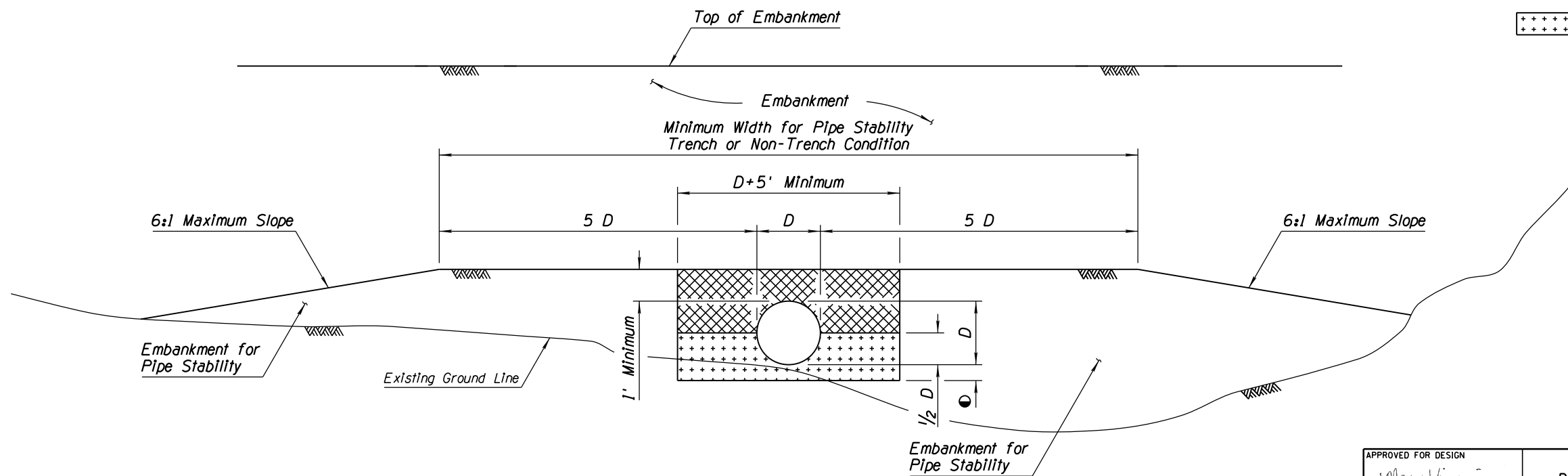
**TRENCH CONDITION**  
IN NATURAL GROUND OR IN EMBANKMENT  
WITHOUT BRACING



**TRENCH CONDITION**  
IN NATURAL GROUND OR IN EMBANKMENT  
WITH BRACING SHOWN



**TRENCH CONDITION**  
NRCIPCP IN NATURAL GROUND  
OR IN EMBANKMENT



**NON-TRENCH CONDITION**

APPROVED FOR DESIGN <i>May Vipavina</i>	STATE OF ARIZONA DEPARTMENT OF TRANSPORTATION ROADWAY STANDARD DRAWINGS	REV. 5/12
APPROVED FOR DISTRIBUTION <i>[Signature]</i>	TYPICAL PIPE INSTALLATION	DRAWING NO. C-13.15