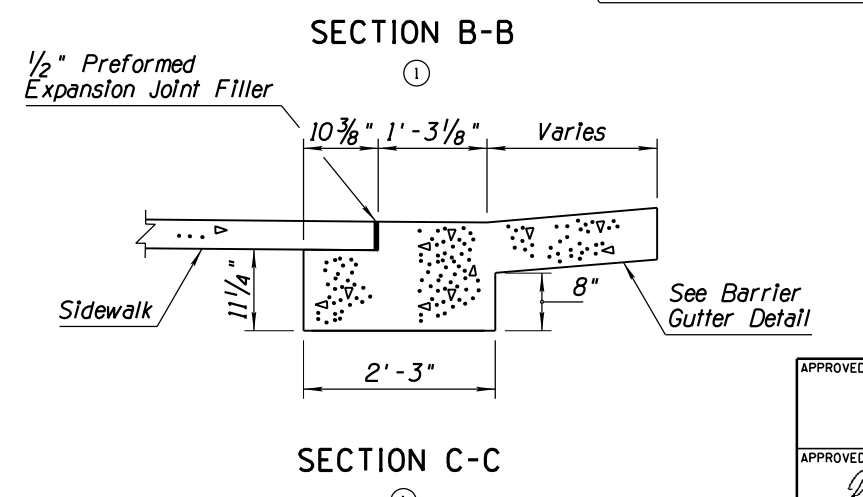
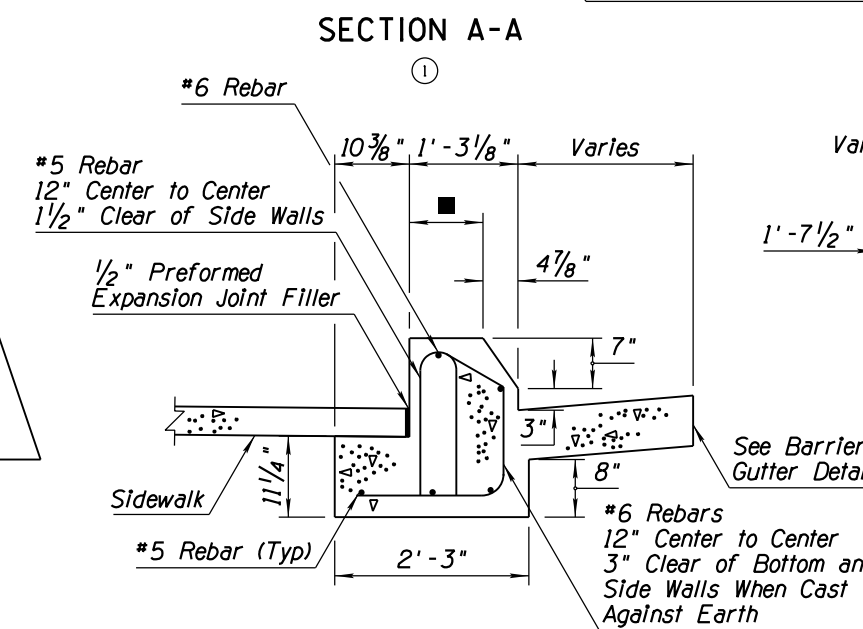
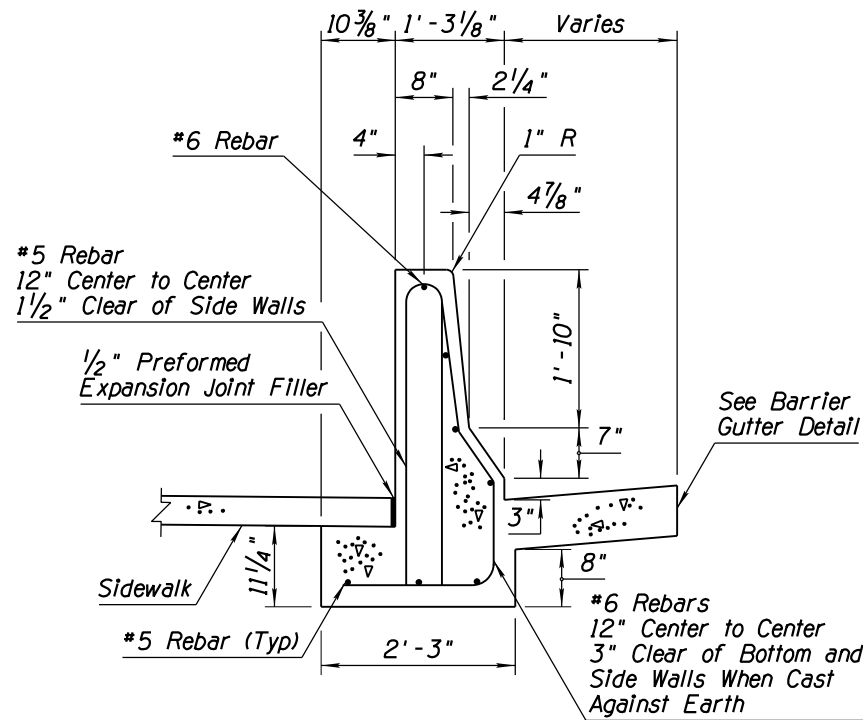
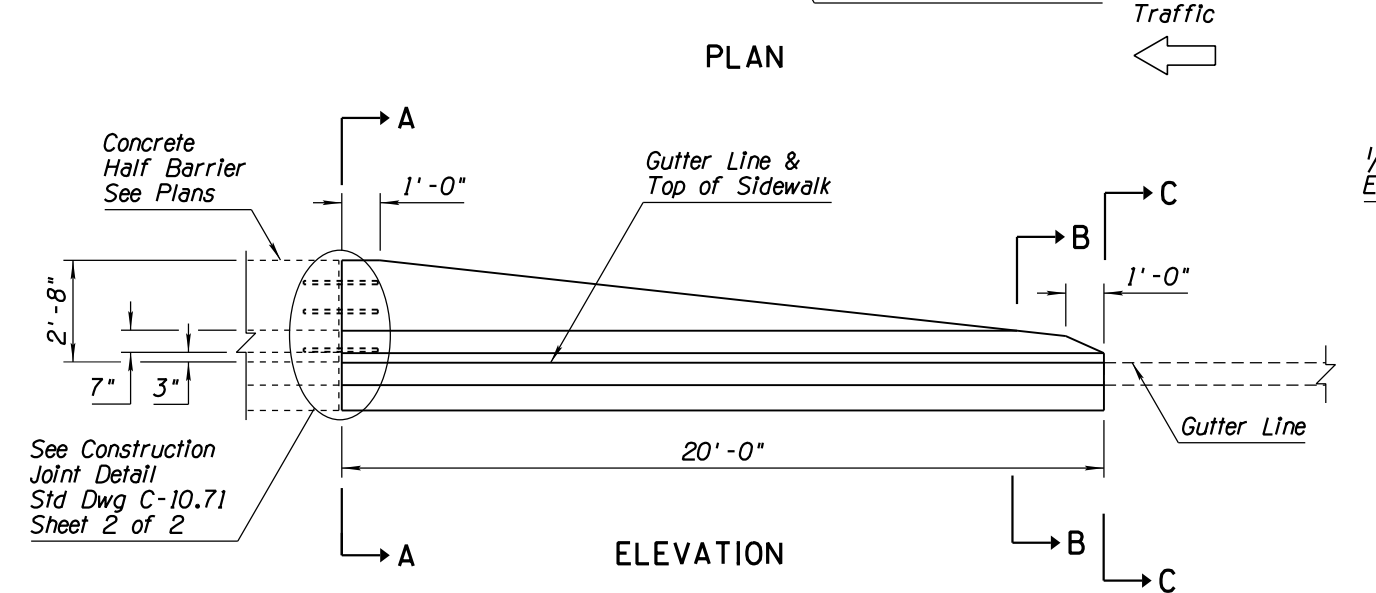
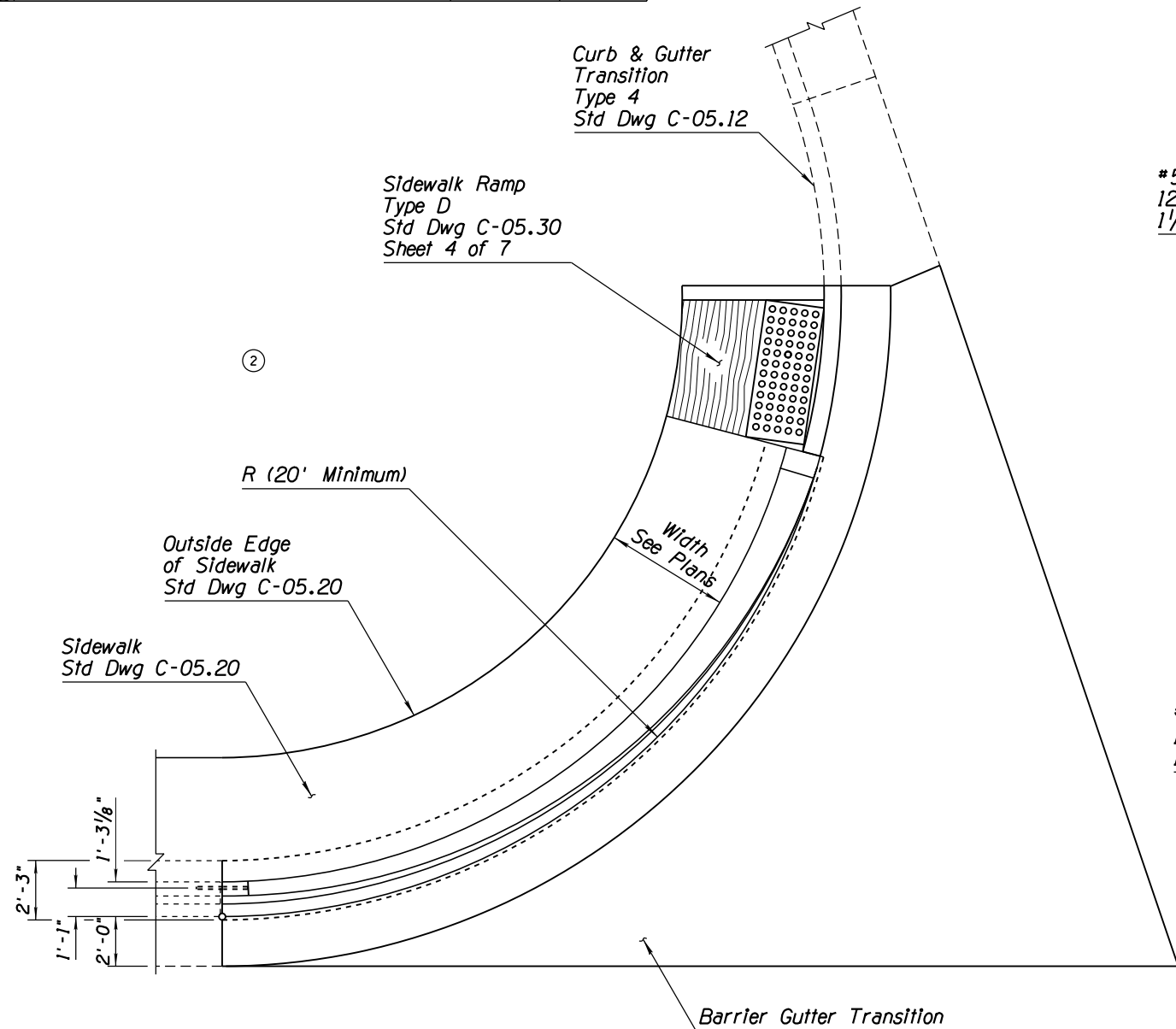
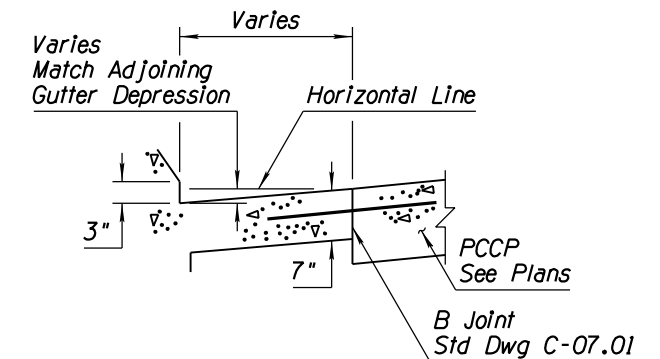
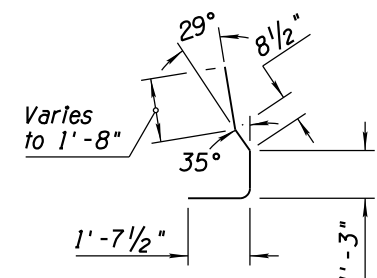
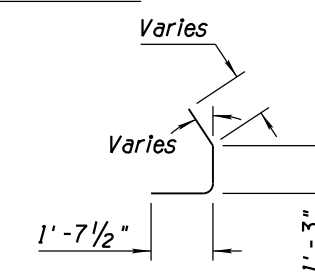
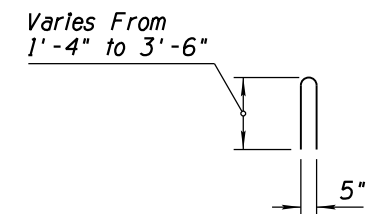


NO.	DESCRIPTION OF REVISIONS	MADE BY	DATE
1	REISSUED STD DWG AS TYPE 'F' TRANSITION	RLF	4/06
2	REMOVED LINE	RLF	5/07
3			
4			



**GENERAL NOTES**

1. All concrete shall be Class S, f'c=4000 PSI.
  2. All rebar shall conform to Std Spec 1003.
  3. All rebar shall have 2" minimum clear cover unless otherwise noted.
  4. See drainage sheets for slotted drain and catch basin details.
  5. Barrier transition shall match the adjoining concrete half barrier.
  6. See Std Dwg C-05.20 for sidewalk construction.
  7. All bend dimensions for rebar are out-to-out of bars.
- Varies; 10 1/4" to 1'-0 5/8" to 1'-3 1/8"



APPROVED FOR DESIGN 	STATE OF ARIZONA DEPARTMENT OF TRANSPORTATION ROADWAY STANDARD DRAWINGS	REV. 5/12
APPROVED FOR DISTRIBUTION 	CONCRETE HALF-BARRIER TRANSITION TYPE 'F' AT RADIUS 32" TO 0"	DRAWING NO. C-10.76