

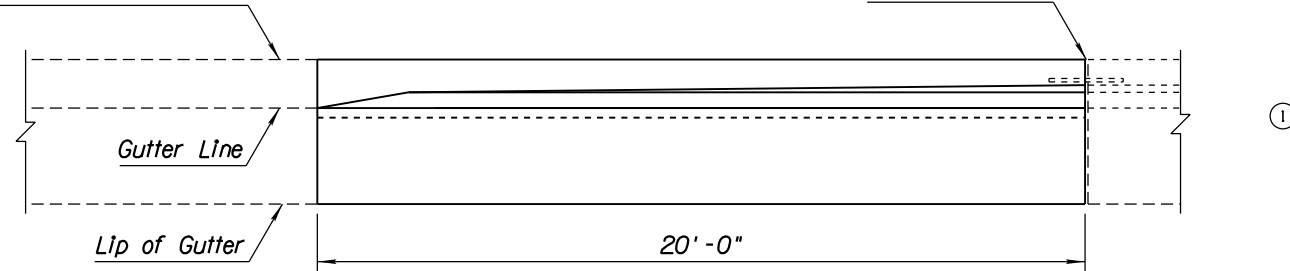
NO	DESCRIPTION OF REVISIONS	MADE BY	DATE
1	REMOVED DIMENSIONS	RLF	4/06
2	REMOVED SYMBOL - ADDED DIMENSION	RLF	5/07
3	REMOVED NOTES	RLF	5/07
4			

GENERAL NOTES

1. All concrete shall be Class S f'c=4000 PSI.
2. All rebar shall conform to Std Spec 1003.
3. All rebar shall have 2" minimum clear cover unless otherwise noted.
4. See drainage sheets for slotted drain and catch basin details.
5. Barrier transition shall match both adjoining curb and gutter and concrete half barrier.
6. All bend dimensions for rebar are out-to-out of bars.
7. Two-inch deep contraction joints shall be placed in the gutter at locations which match the joints in adjacent PCCP and at approximate 15' centers when adjacent to AC pavement. Joints shall be either hand-tooled or sawn.

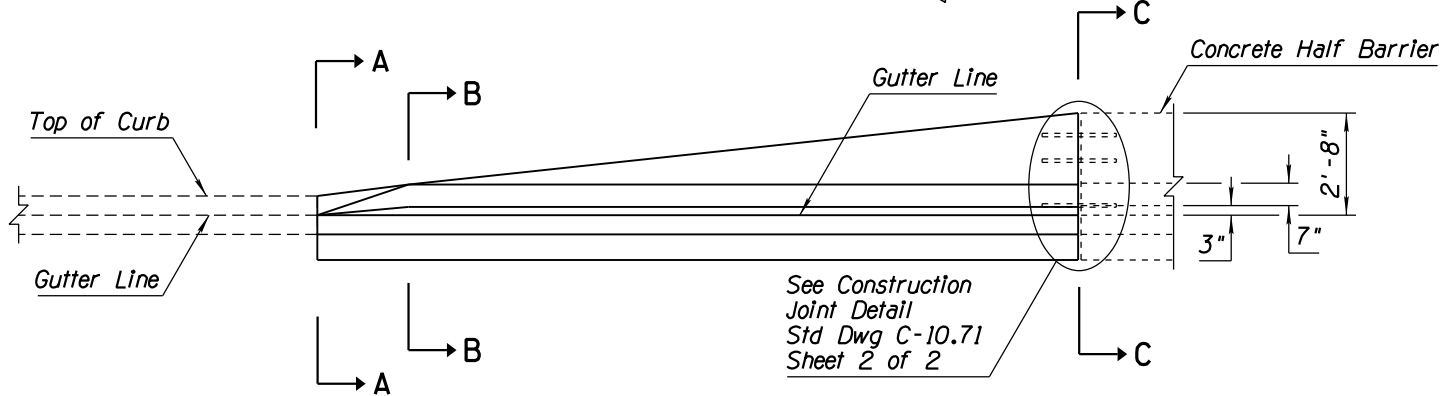
Concrete Curb & Gutter
Type B or C
Std Dwg C-05.10
See Plans

1/2" Bituminous
Joint Filler

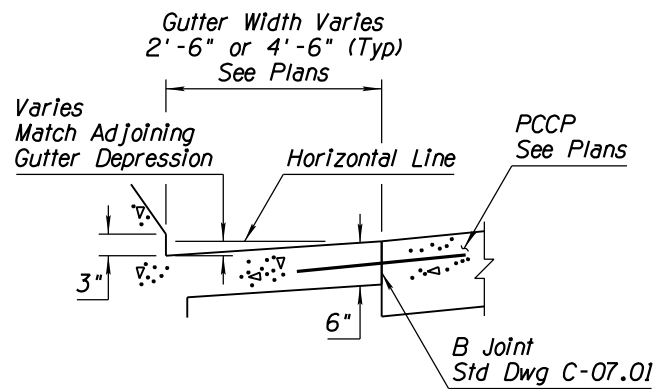


PLAN

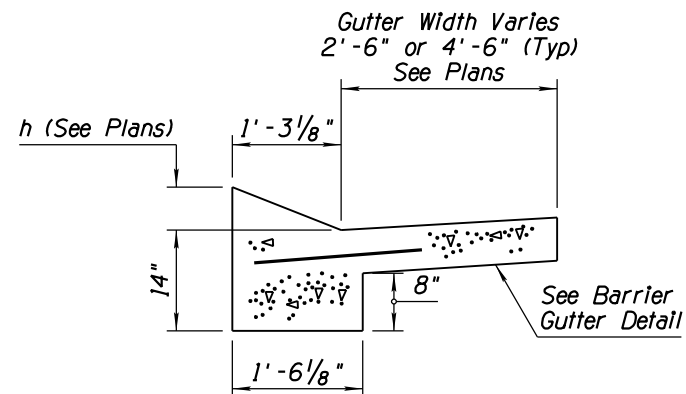
Traffic
←



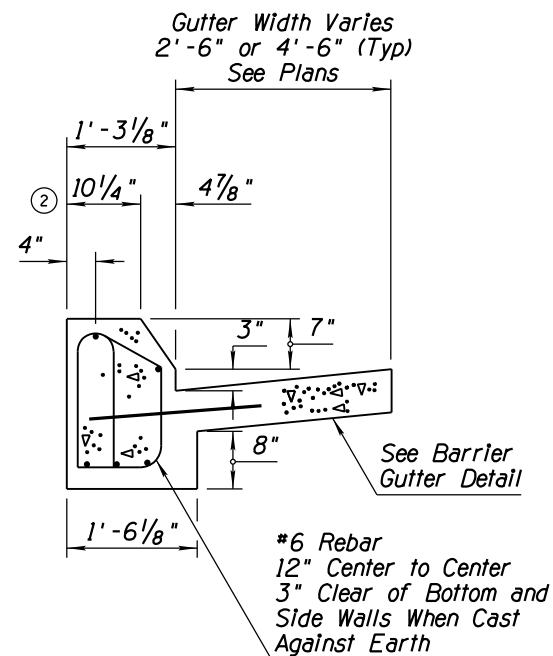
ELEVATION



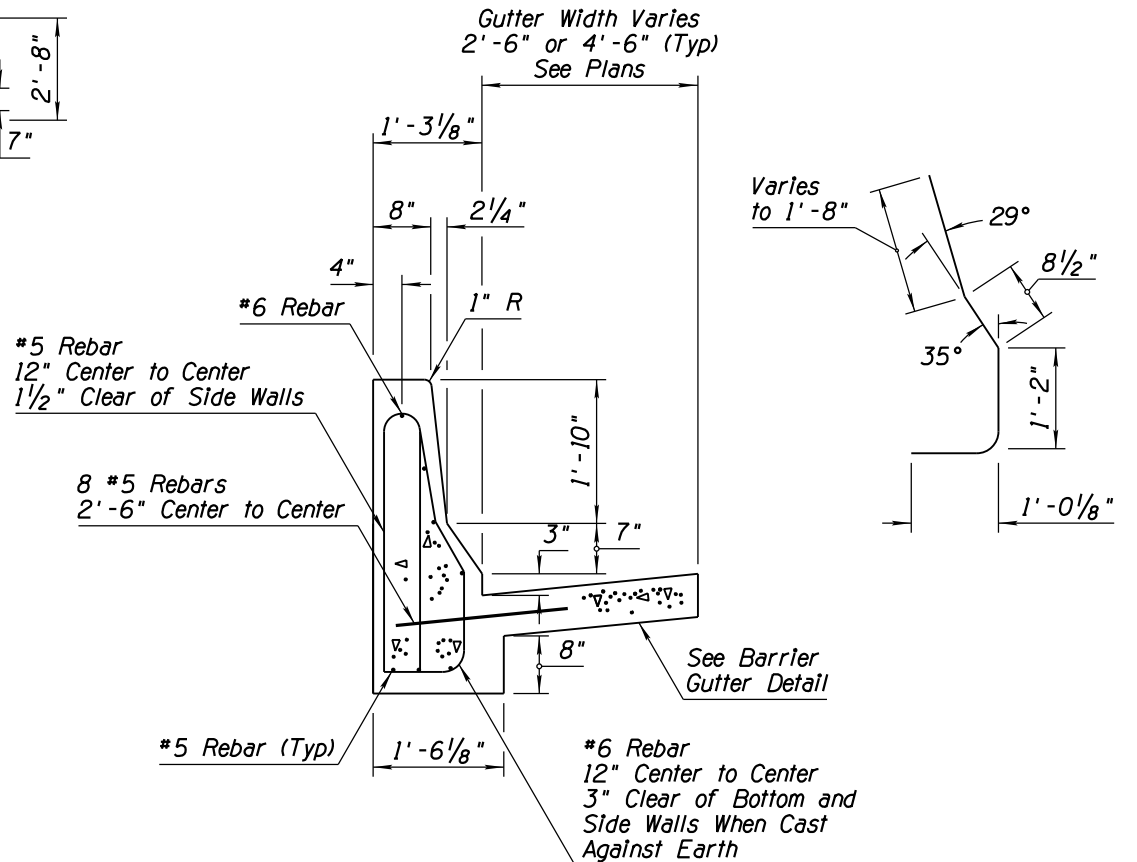
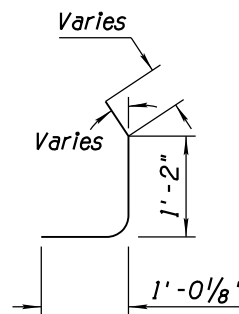
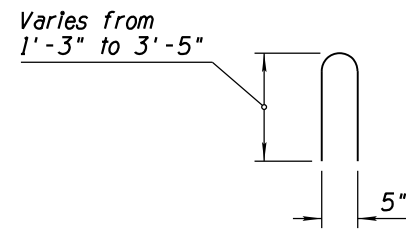
BARRIER GUTTER DETAIL



SECTION A-A



SECTION B-B



SECTION C-C

TRANSITION TO FREEWAY CURB

APPROVED FOR DESIGN 	STATE OF ARIZONA DEPARTMENT OF TRANSPORTATION ROADWAY STANDARD DRAWINGS	REV. 5/12
APPROVED FOR DISTRIBUTION 	CONCRETE HALF-BARRIER TRANSITION TYPE 'F' TANGENT DEPARTURE TYPE 2	DRAWING NO. C-10.75 Sheet 2 of 2