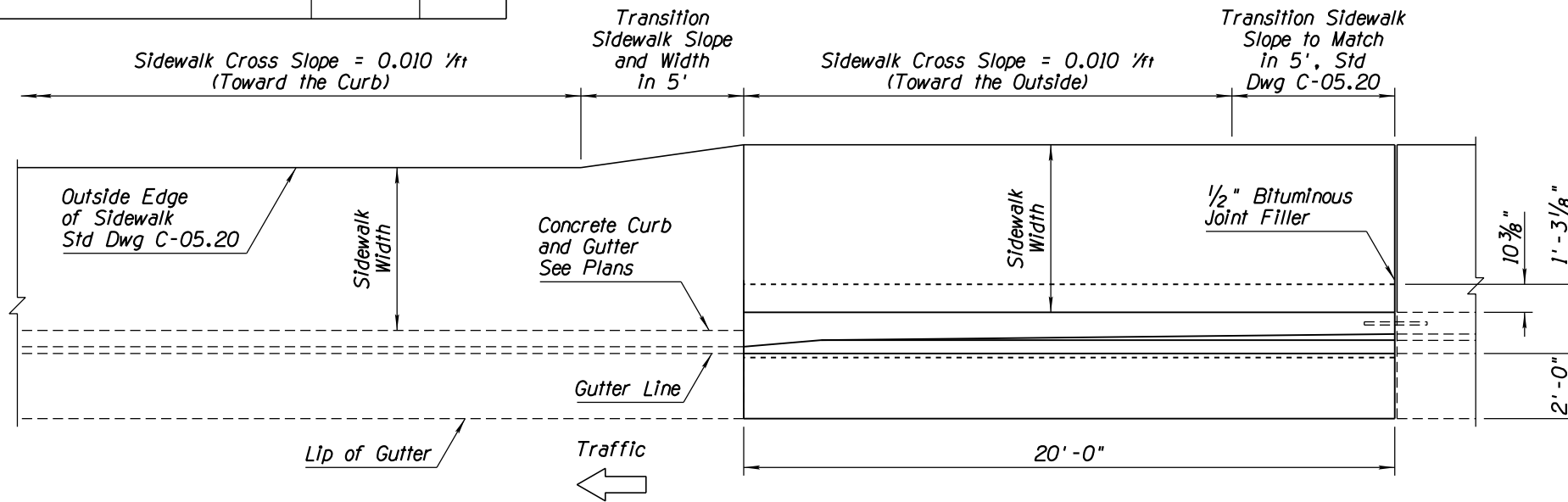


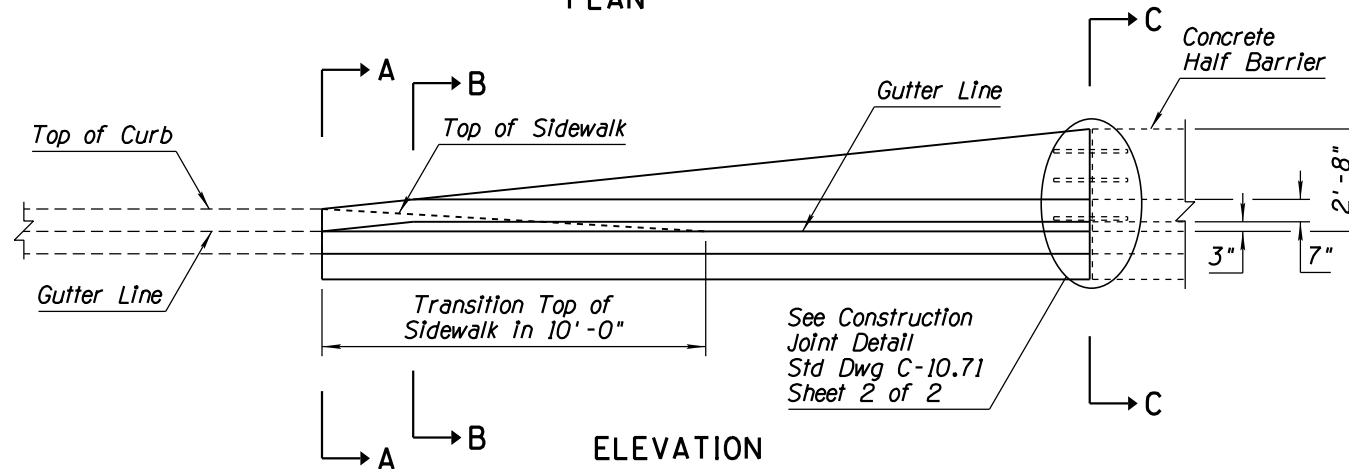
NO.	DESCRIPTION OF REVISIONS	MADE BY	DATE
1	REVISED SECTION VIEW GRAPHICS	RLF	4/06
2	REVISED 'H' HEIGHT DESIGNATION TO 'h'	RLF	4/06
3	REVISED NOTE	RLF	5/07
4			

GENERAL NOTES

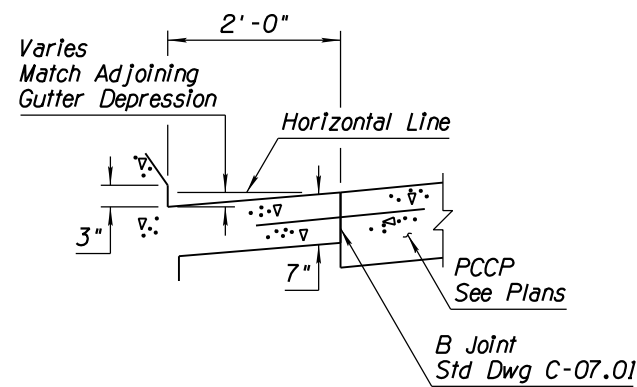
- All concrete shall be Class S, $f'c=4000$ PSI.
- All rebar shall conform to Std Spec 1003.
- All rebar shall have 2" minimum clear cover unless otherwise noted.
- See drainage sheets for slotted drain and catch basin details.
- Barrier transition shall match both adjoining curb and gutter and concrete Half Barrier.
- See Std Dwg C-05.20 for sidewalk construction.
- All bend dimensions for rebar are out-to-out of rebars.
- Two-inch deep contraction joints shall be placed in the gutter at locations which match the joints in adjacent PCCP and at approximate 15' centers when adjacent to AC pavement. Joints shall be either hand tooled or sawn.



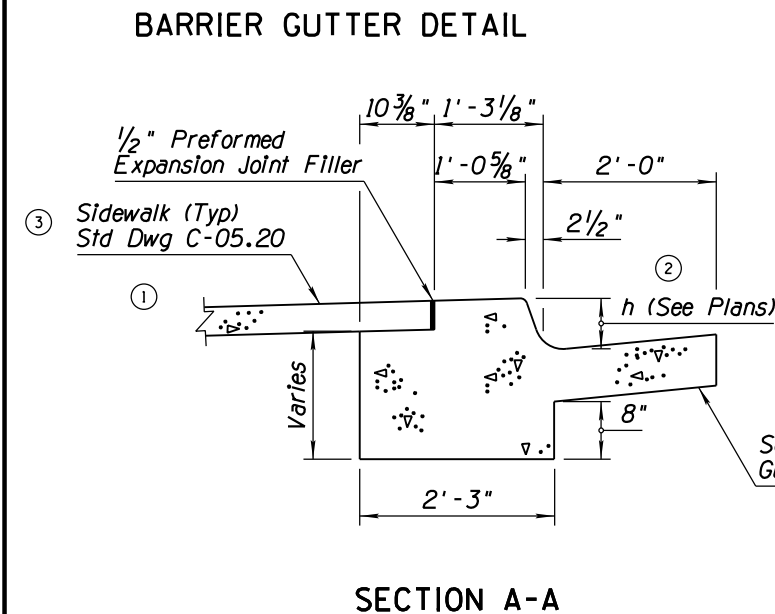
PLAN



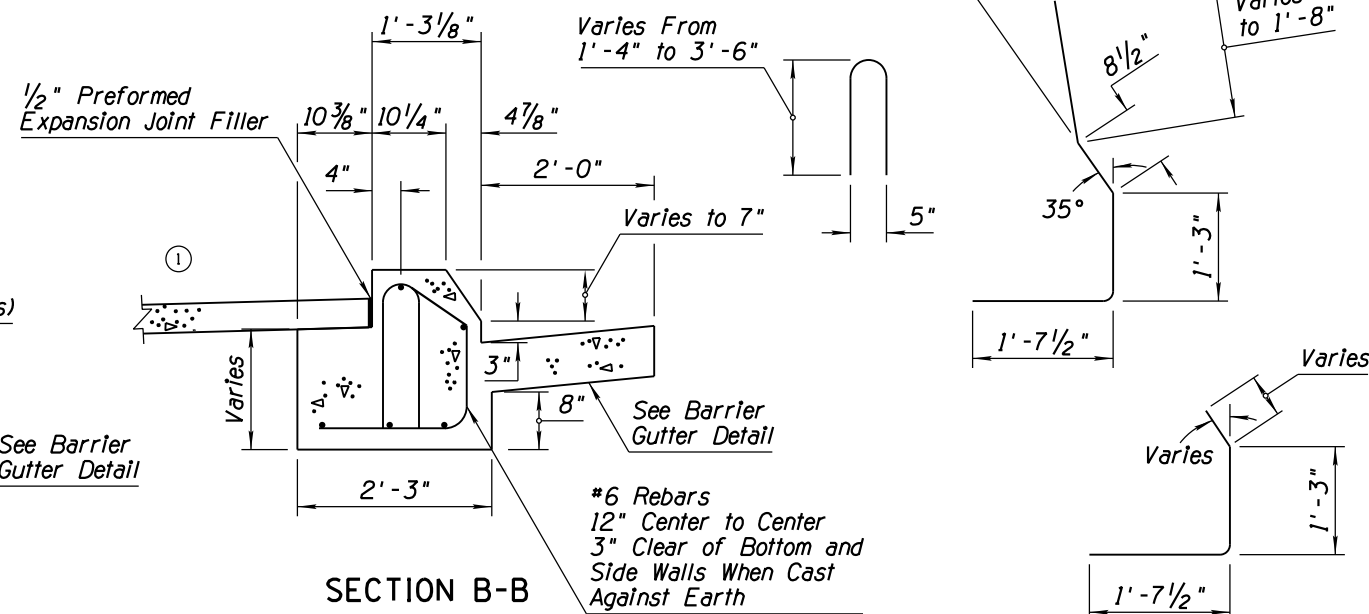
ELEVATION



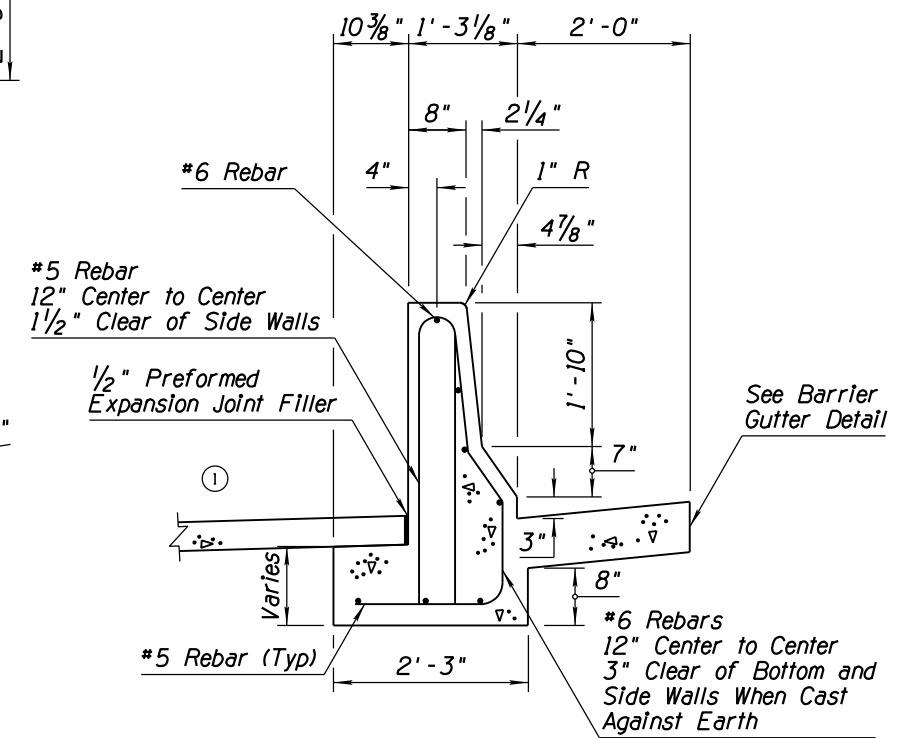
BARRIER GUTTER DETAIL



SECTION A-A



SECTION B-B



SECTION C-C
TRANSITION TO VERTICAL TYPE CURB

APPROVED FOR DESIGN 	STATE OF ARIZONA DEPARTMENT OF TRANSPORTATION ROADWAY STANDARD DRAWINGS	REV. 5/12
APPROVED FOR DISTRIBUTION 	CONCRETE HALF-BARRIER TRANSITION TYPE 'F' TANGENT DEPARTURE TYPE 1	DRAWING NO. C-10.75 Sheet 1 of 2