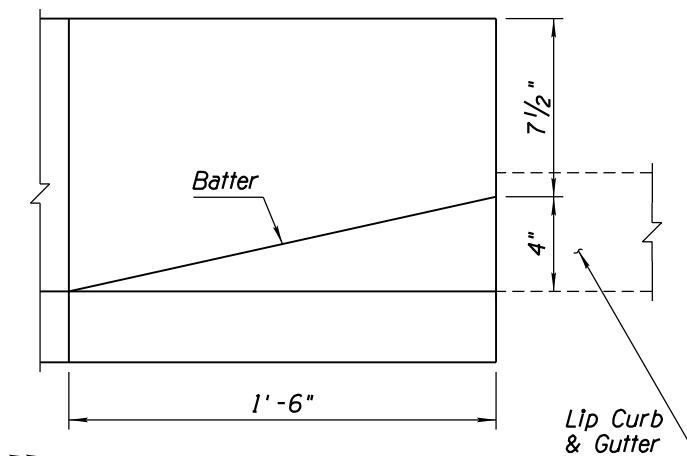
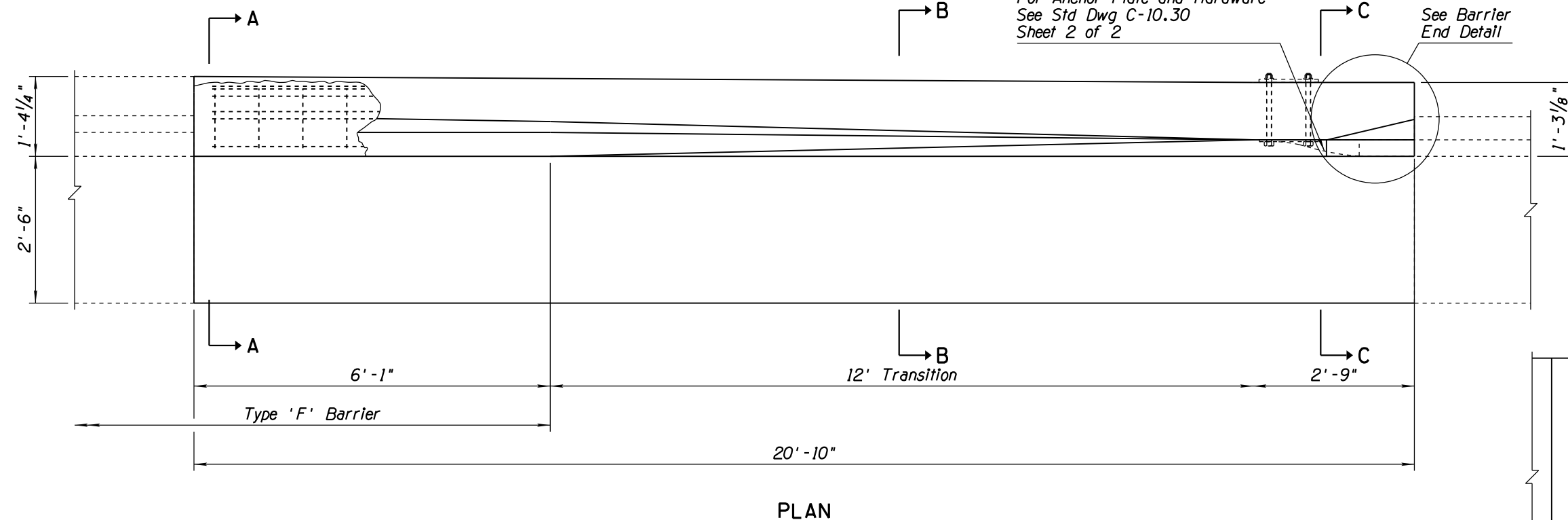


NO	DESCRIPTION OF REVISIONS	MADE BY	DATE
1	REISSUED STANDARD DRAWING	RLF	9/04
2	REVISED NOTE	RLF	7/05
3	REVISED SYSTEM LIMIT TO INCLUDE END SHOE	RLF	5/07
4			

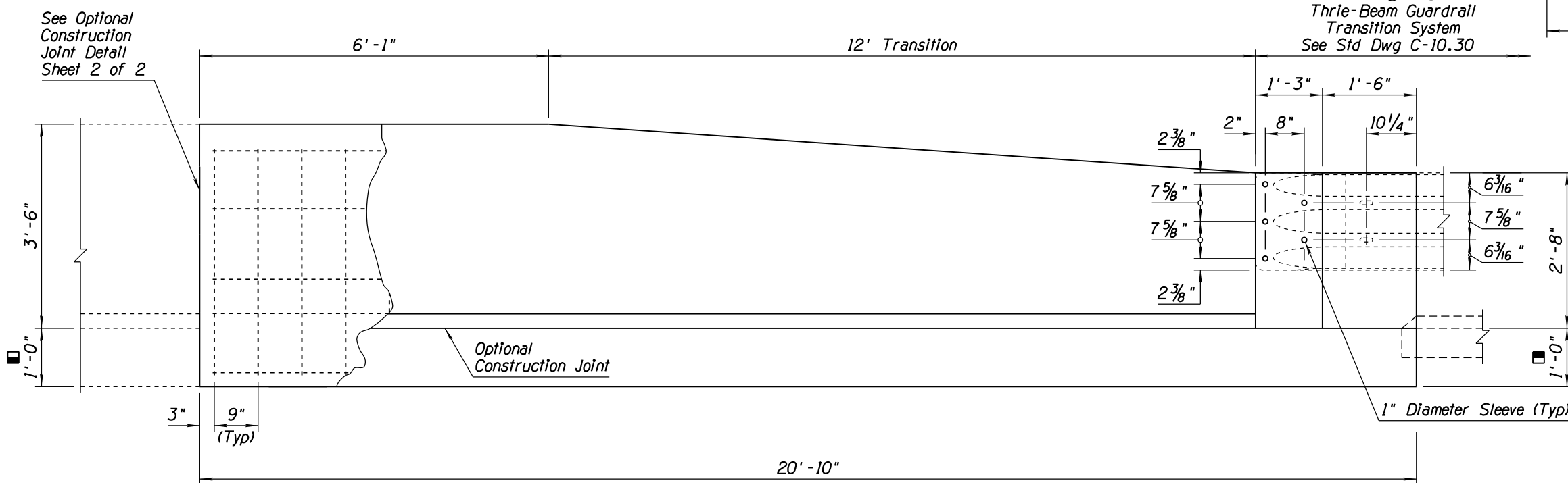
GENERAL NOTES

- Concrete shall be Class S, $f'_c = 4000$ PSI.
 - All rebar shall have 2" minimum clear cover unless otherwise noted.
 - All bend dimensions for rebar are out-to-out of rebars.
 - Two-inch deep contraction joints shall be placed in the gutter at locations which match the joints in adjacent PCCP and at approximate 15' centers when adjacent to AC pavement. Joints shall be either hand-tooled or sawn.
- 1'-0" Minimum or Match Thickness of Adjacent PCCP

②
 Thrie-Beam Terminal Connector
 For Anchor Plate and Hardware
 See Std Dwg C-10.30
 Sheet 2 of 2



② ③
 Thrie-Beam Guardrail
 Transition System
 See Std Dwg C-10.30



**ELEVATION
 BARRIER WITH CURB AND GUTTER**

APPROVED FOR DESIGN 	STATE OF ARIZONA DEPARTMENT OF TRANSPORTATION ROADWAY STANDARD DRAWINGS	REV. 5/12
APPROVED FOR DISTRIBUTION 	CONCRETE HALF-BARRIER TRANSITION TO VERTICAL 42" TO 32" TYPE 'F' WITH GUTTER	DRAWING NO. C-10.73 Sheet 1 of 2