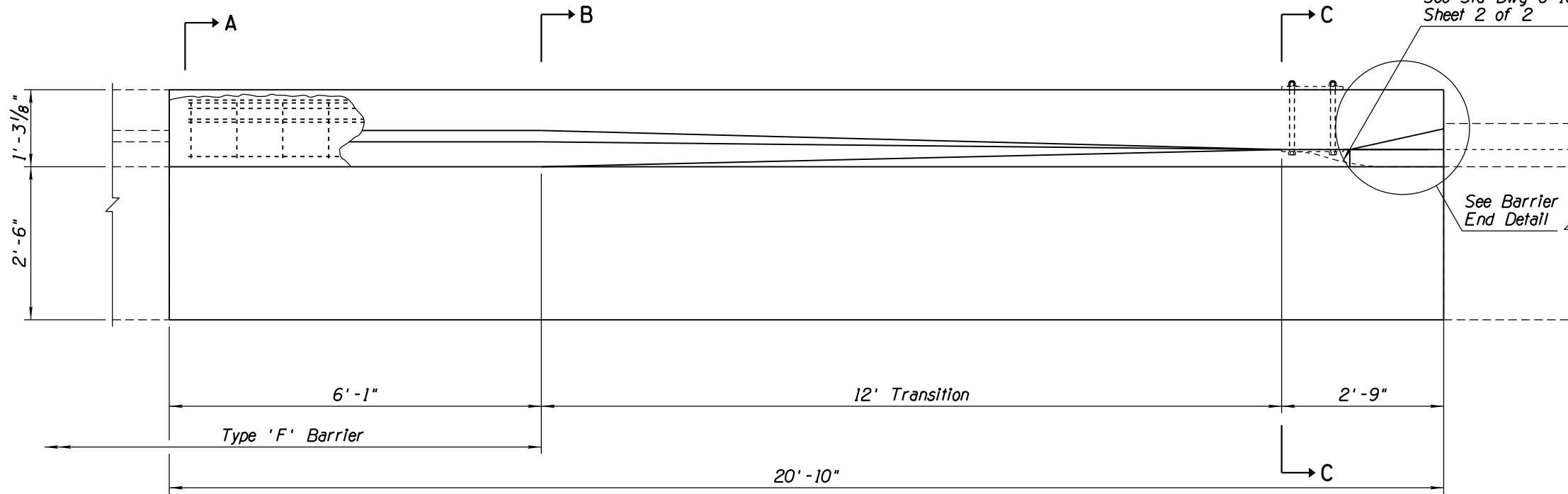


NO	DESCRIPTION OF REVISIONS	MADE BY	DATE
1	REISSUED STANDARD DRAWING	RLF	9/04
2	REVISED NOTE	RLF	7/05
3	REVISED SYSTEM LIMIT TO INCLUDE END SHOE	RLF	5/07
4			

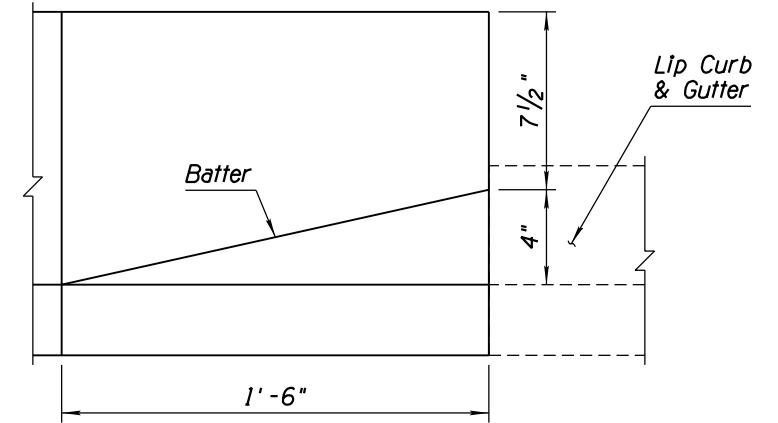
GENERAL NOTES

- Concrete shall be Class S, $f'_c = 4000$ PSI.
 - All rebar shall have 2" minimum clear cover unless otherwise noted.
 - All bend dimensions for rebar are out-to-out of bars.
 - Two-inch deep contraction joints shall be placed in the gutter at locations which match the joints in adjacent PCCP and at approximate 15' centers when adjacent to AC pavement. Joints shall be either hand tooled or sawn.
- 1'-0" Minimum or Match Thickness of Adjacent PCCP



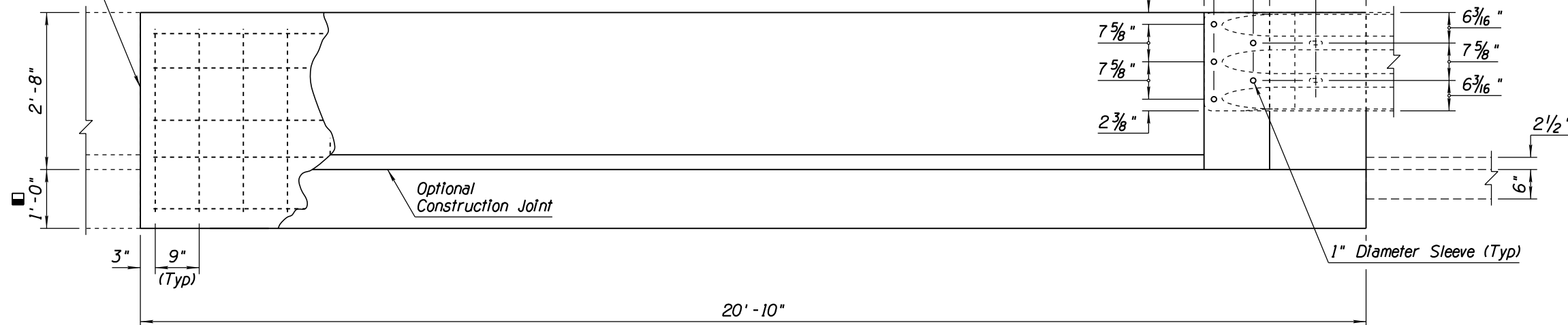
PLAN

Traffic ←



BARRIER END DETAIL

See Optional Construction Joint Detail Sheet 2 of 2



ELEVATION
BARRIER WITH CURB AND GUTTER

APPROVED FOR DESIGN 	STATE OF ARIZONA DEPARTMENT OF TRANSPORTATION ROADWAY STANDARD DRAWINGS	REV. 5/12
APPROVED FOR DISTRIBUTION 	CONCRETE HALF-BARRIER TRANSITION TO VERTICAL 32" TYPE 'F' WITH CURB & GUTTER	DRAWING NO. ① C-10.71 Sheet 1 of 2