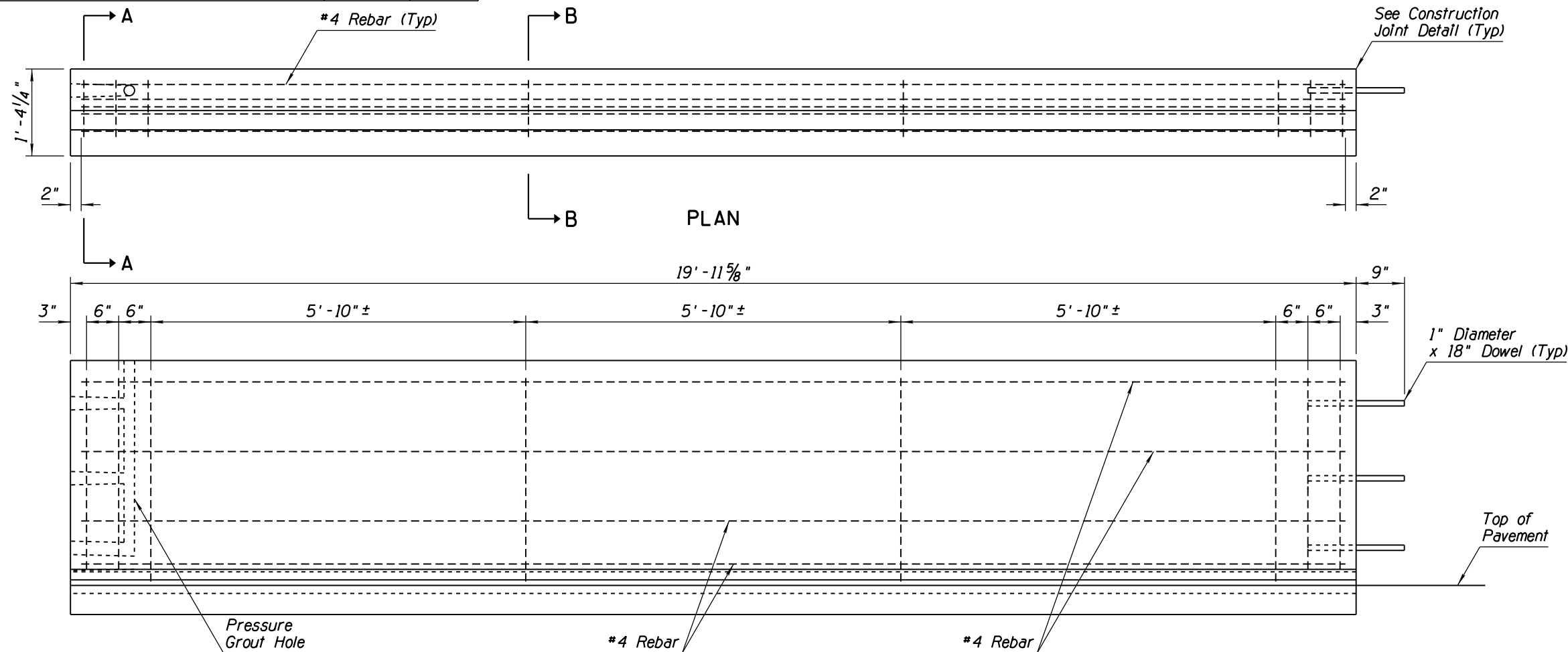
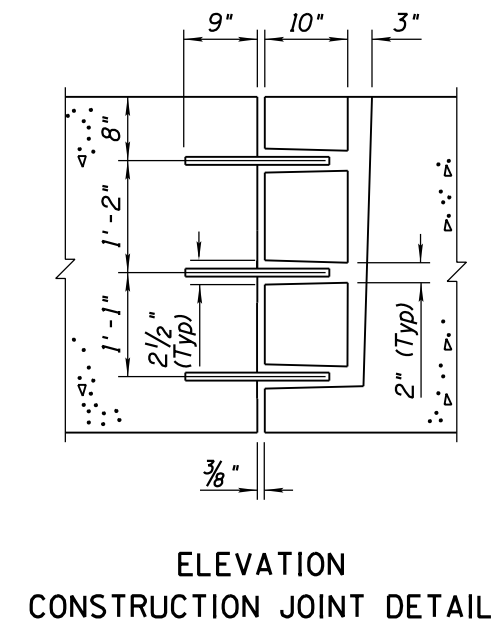
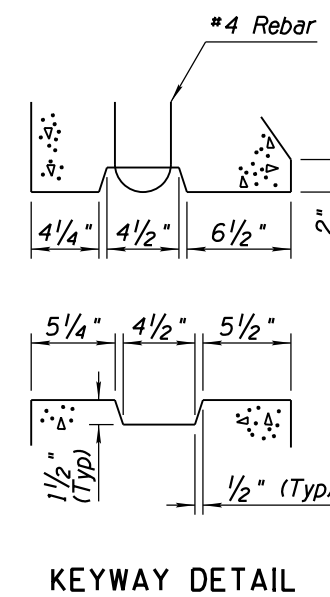
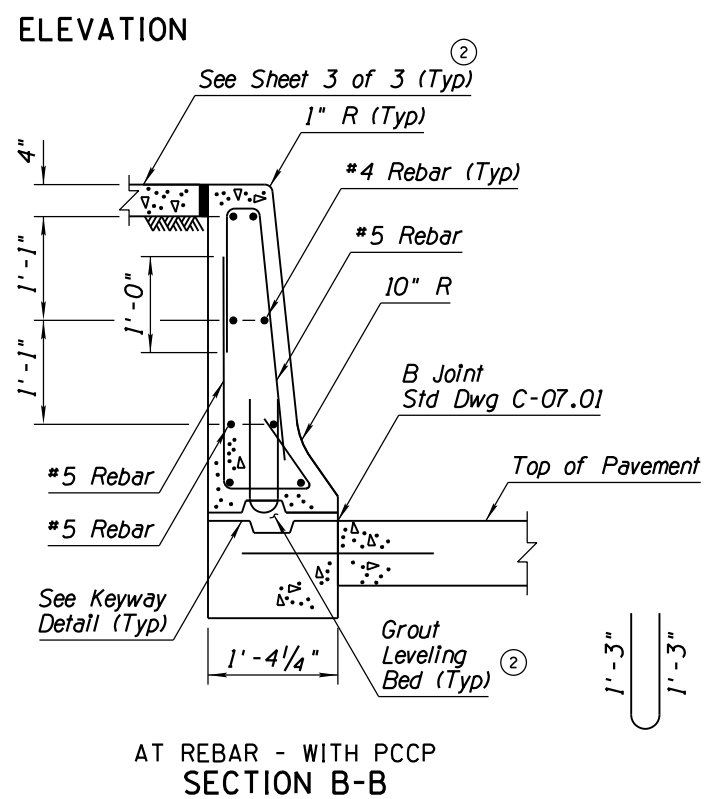
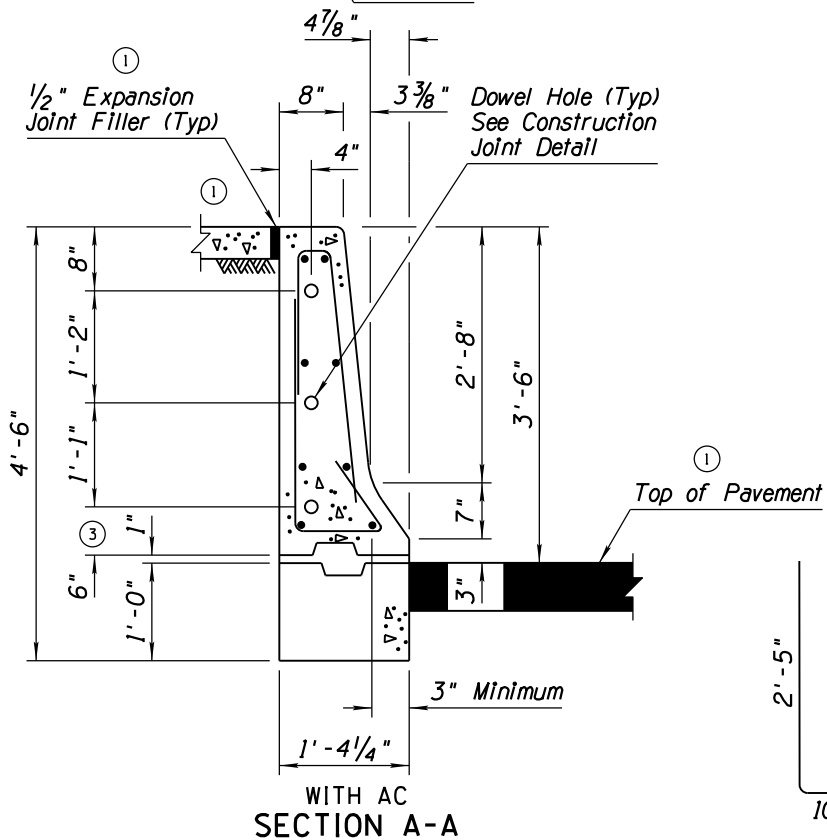
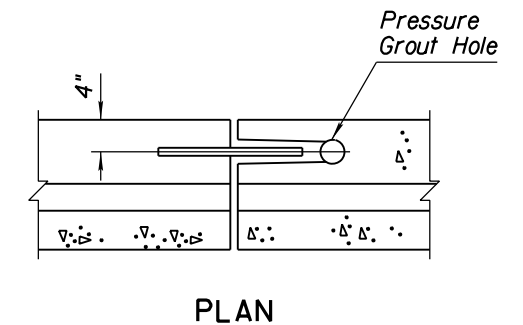


NO	DESCRIPTION OF REVISIONS	MADE BY	DATE
1	REVISED SECTION A-A: ADDED CONCRETE CAP AND NOTES	RLF	11/06
2	ADDED (Typ)	RLF	11/06
3	CHANGED 3" DIMENSION TO 6"	RLF	5/12
4			



- ### GENERAL NOTES
- Concrete shall be Class S, $f'_c = 4000$ PSI.
 - The Half Barrier shall be placed upon a bed of grout in order to provide a uniform bearing.
 - Doweled joints shall be grouted under pressure until all of the openings and the joints are filled.
 - All bend dimensions for rebar are out-to-out of bars.
 - Rebar shall have 2" minimum clear cover unless otherwise noted.



APPROVED FOR DESIGN 	STATE OF ARIZONA DEPARTMENT OF TRANSPORTATION ROADWAY STANDARD DRAWINGS	REV. 5/12
APPROVED FOR DISTRIBUTION 	CONCRETE HALF BARRIER 42" TYPE 'F' AT PIERS PRECAST	DRAWING NO. C-10.55 Sheet 2 of 3