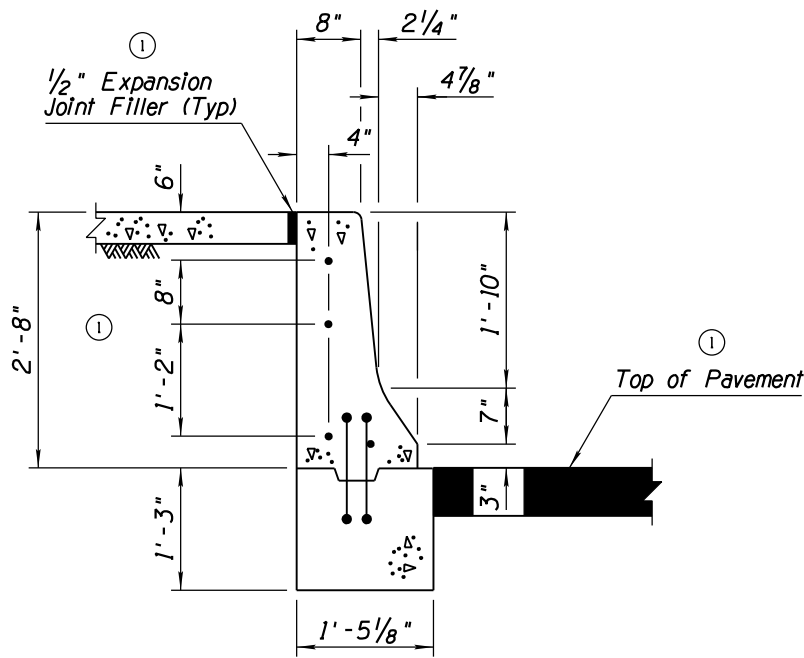
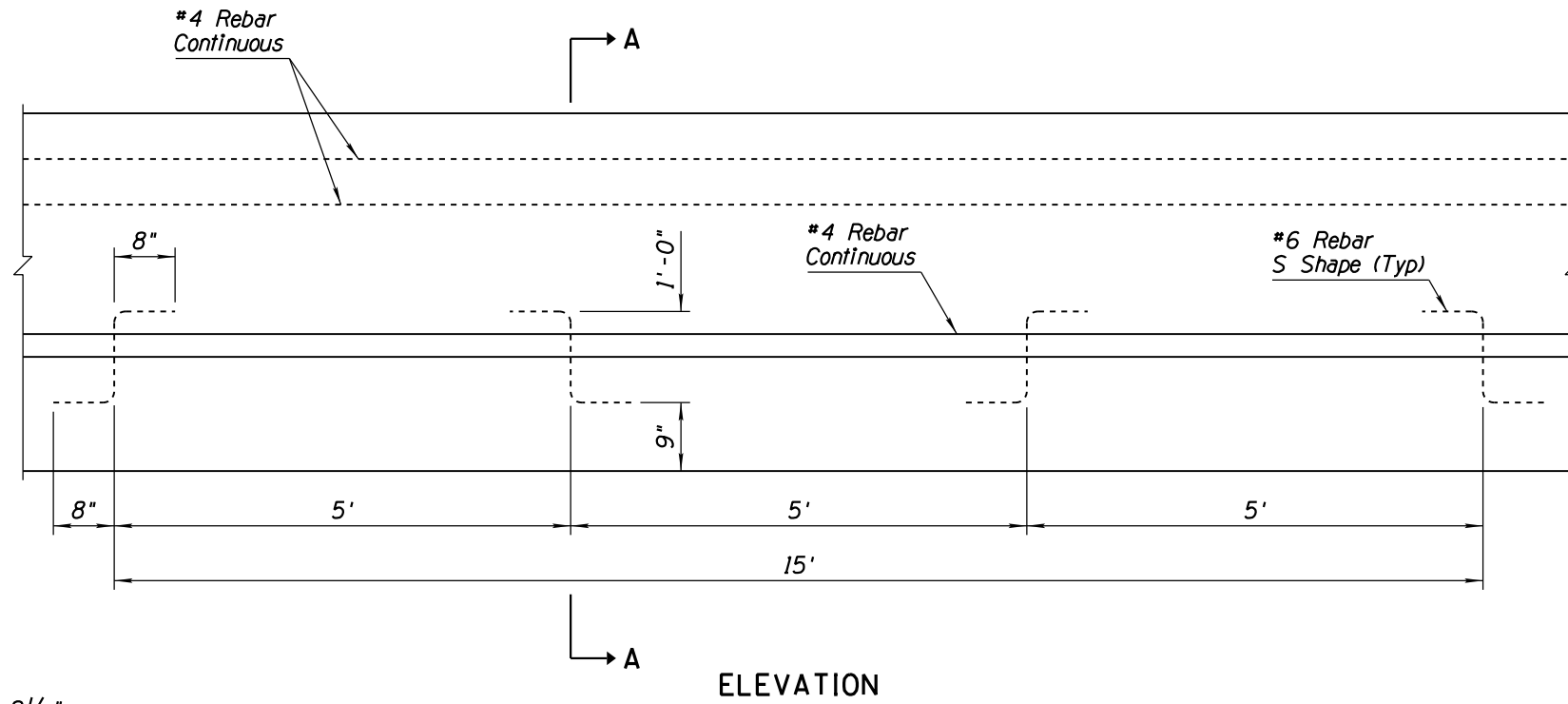
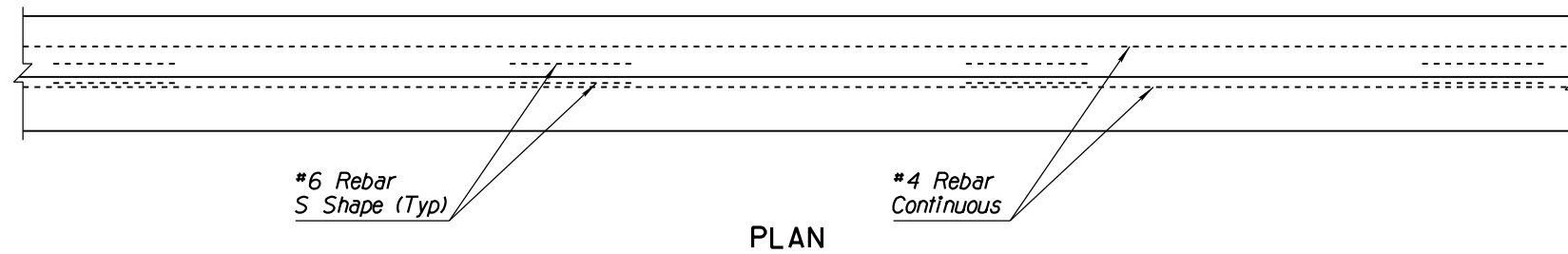


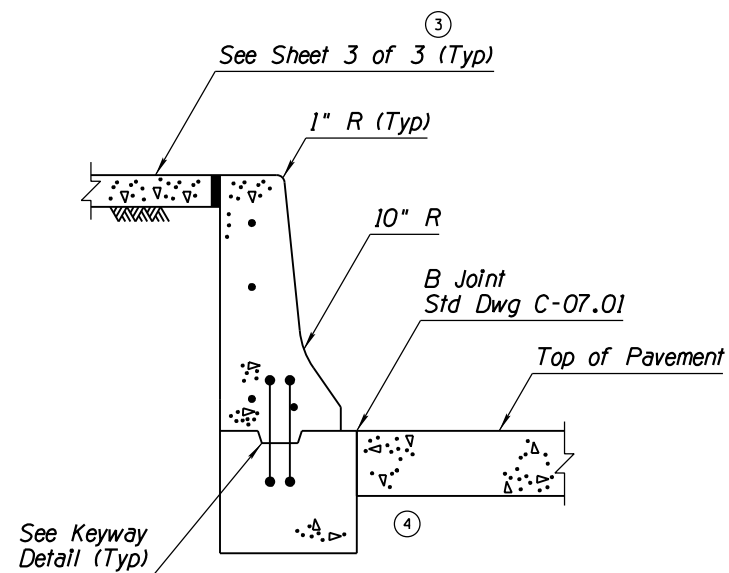
NO	DESCRIPTION OF REVISIONS	MADE BY	DATE
1	REVISED SECTION A-A: ADDED CONCRETE CAP & NOTES	RLF	11/06
2	REVISED GENERAL NOTE 3	RLF	11/06
3	ADDED (Typ)	RLF	11/06
4	REMOVED DOWEL FROM JOINT	RLF	5/07

### GENERAL NOTES

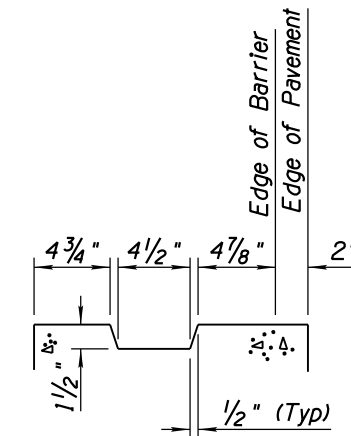
- Concrete shall be Class S,  $f'_c = 4000$  PSI.
- If the footing and Half Barrier are cast monolithically, #6 S shape rebars are not required.
- Longitudinal rebar shall extend 12" past the construction joint at the completion of each incremental pour.



WITH AC  
SECTION A-A



WITH PCCP  
SECTION A-A  
SEE SECTION A-A (WITH AC)  
FOR TYPICAL REBAR PLACEMENT



KEYWAY DETAIL  
SEE SECTION A-A (WITH AC)  
FOR TYPICAL REBAR PLACEMENT

APPROVED FOR DESIGN 	STATE OF ARIZONA DEPARTMENT OF TRANSPORTATION ROADWAY STANDARD DRAWINGS	REV. 5/12
APPROVED FOR DISTRIBUTION 	CONCRETE HALF BARRIER 32" TYPE 'F' AT PIERS CAST-IN-PLACE	DRAWING NO. C-10.54 Sheet 1 of 3