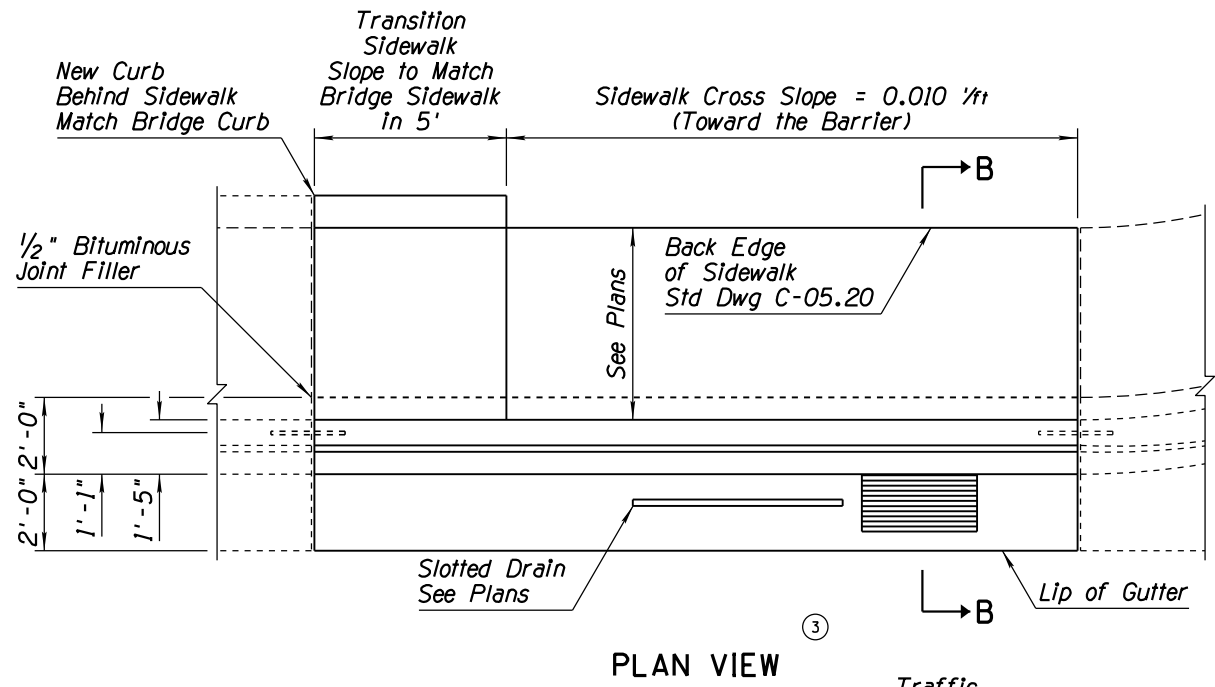
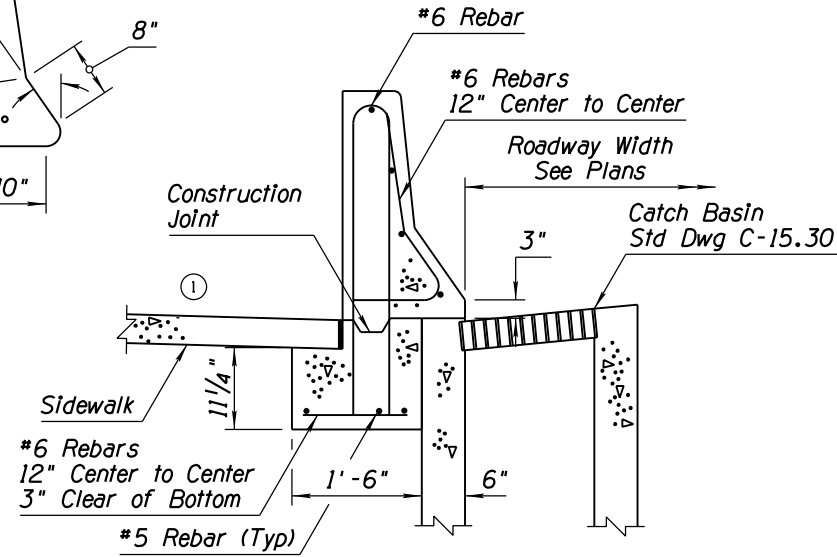
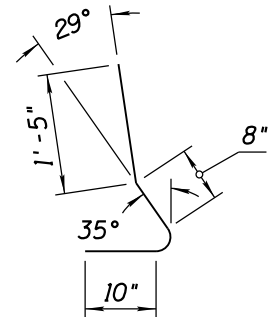


NO.	DESCRIPTION OF REVISIONS	MADE BY	DATE
1	MODIFIED SECTION VIEWS; REMOVED SLOPE SPECIFICATION	RLF	4/06
2	WAS 12 1/2"-IS NOW 1' & ADDED WITHOUT GUARDRAIL TO TITLE	RLF	4/06
3	MODIFIED TITLE	RLF	4/06
4	REVISED HEIGHT DIMENSION FROM 32" TO 32"	RLF	7/06

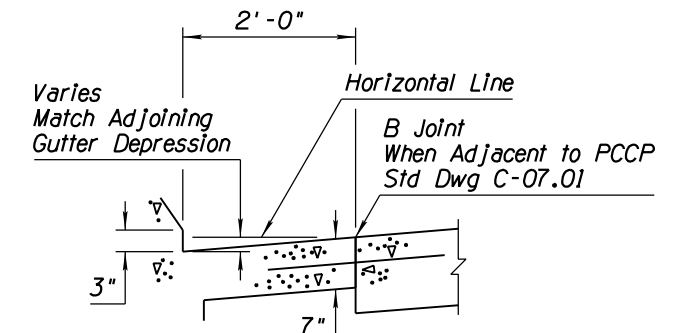


PLAN VIEW

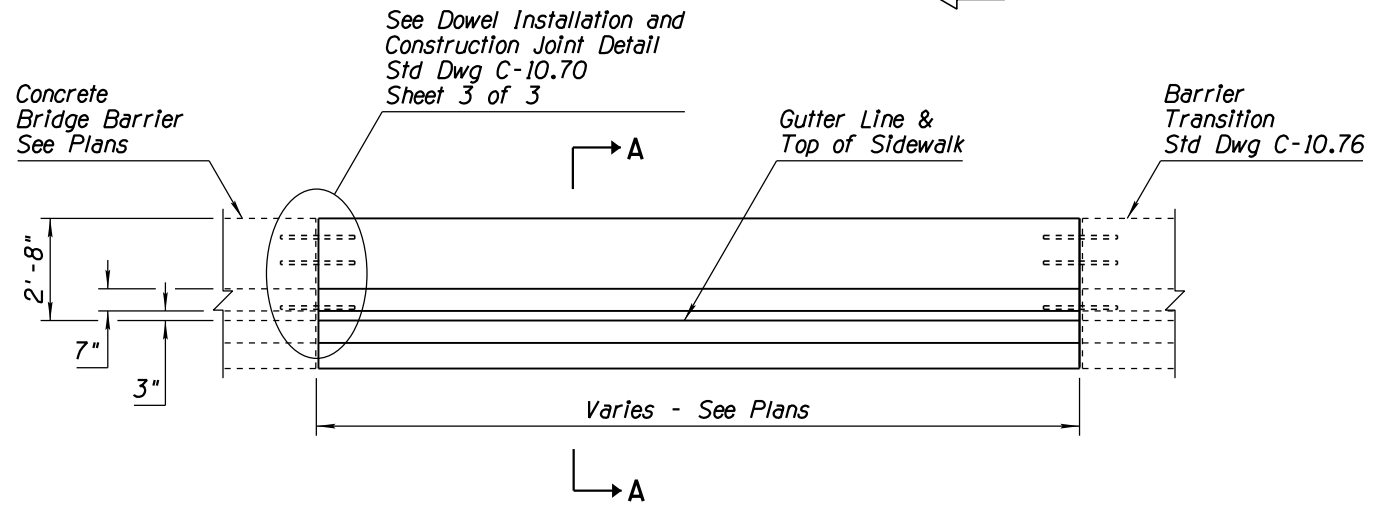


SECTION B-B AT CATCH BASINS

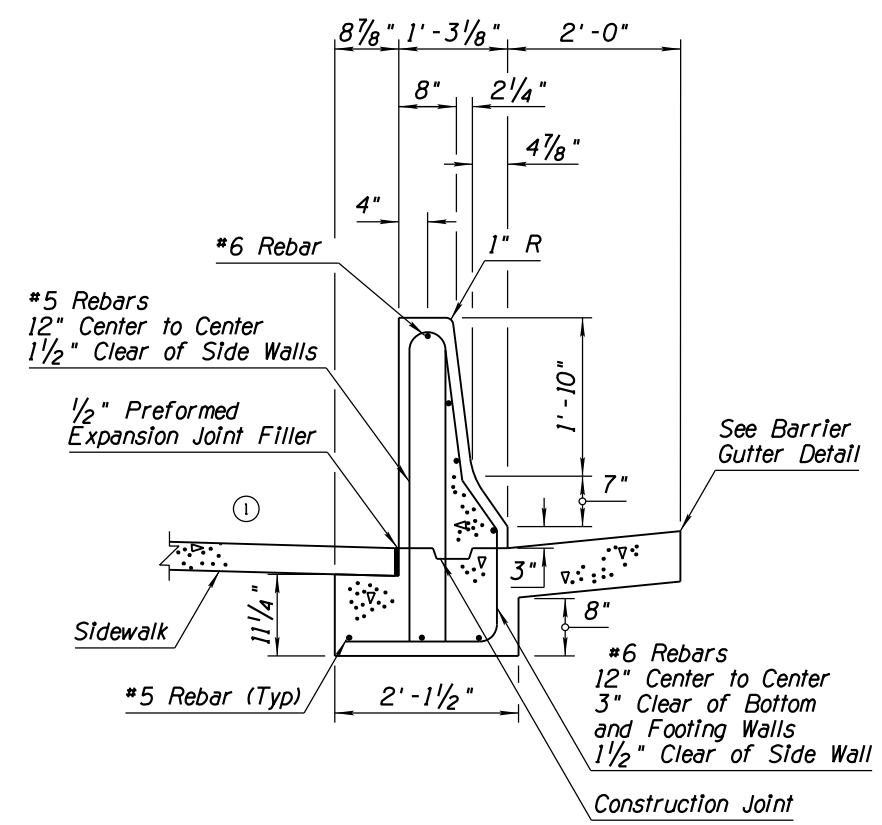
- GENERAL NOTES**
1. Concrete shall be Class S, $f'c=4000$ PSI.
 2. Rebar shall conform to Std Spec 1003.
 3. Rebar shall have 2" minimum clear cover unless otherwise noted.
 4. See drainage sheets for slotted drain and catch basin details.
 5. Departure termination may be substituted for Std Dwg C-10.76 barrier transition under departure conditions.
 6. See Std Dwg C-05.20 for sidewalk construction.
 7. All bend dimensions for rebar are out-to-out of rebars.



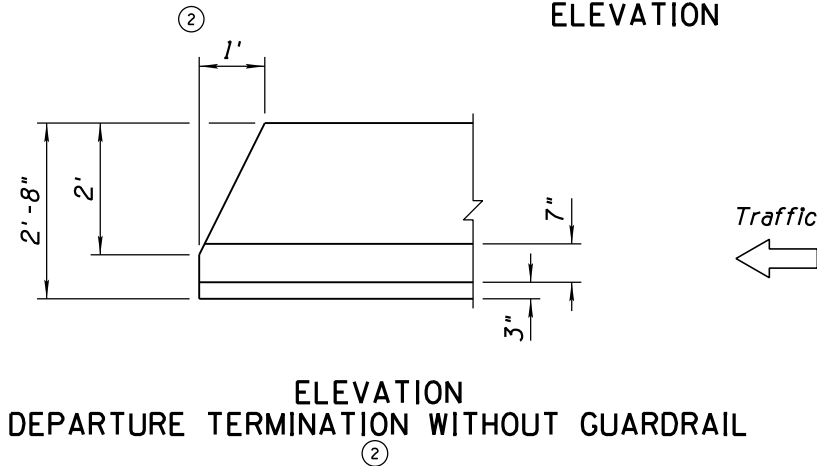
BARRIER GUTTER DETAIL



ELEVATION



SECTION A-A



ELEVATION DEPARTURE TERMINATION WITHOUT GUARDRAIL

APPROVED FOR DESIGN 	STATE OF ARIZONA DEPARTMENT OF TRANSPORTATION ROADWAY STANDARD DRAWINGS	REV. 5/12
APPROVED FOR DISTRIBUTION 	CONCRETE HALF BARRIER 32" TYPE 'F' WITH SIDEWALK	DRAWING NO. C-10.51