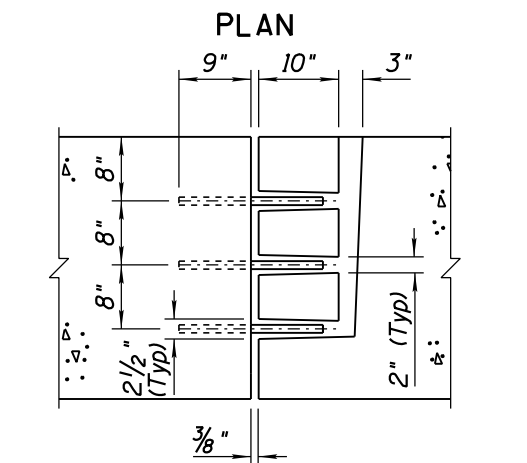
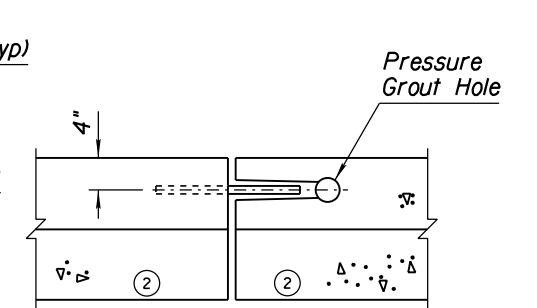
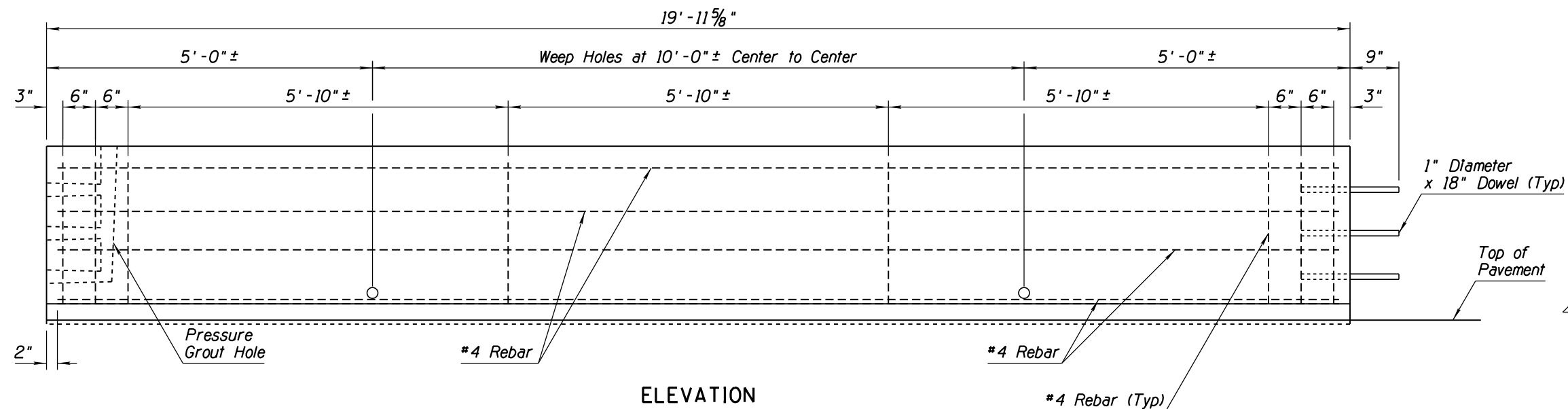
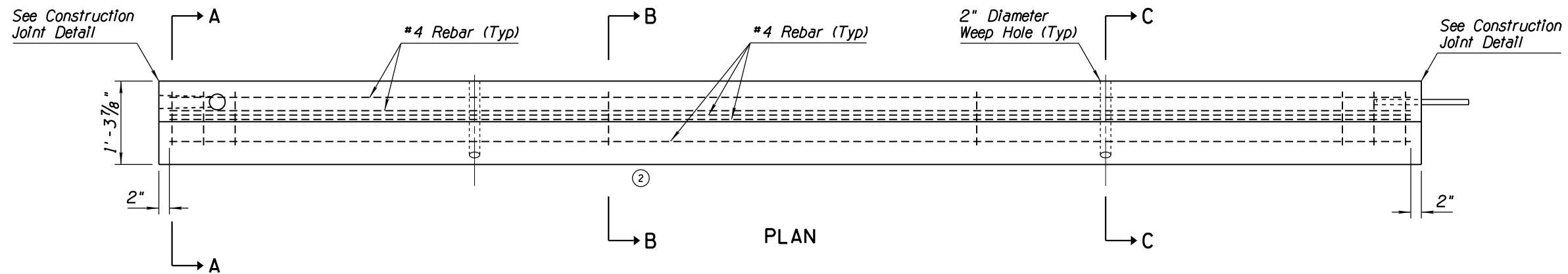


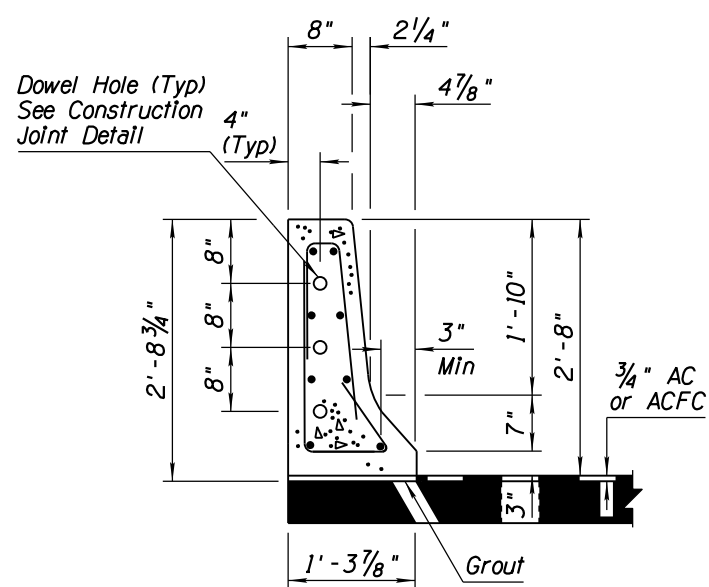
NO.	DESCRIPTION OF REVISIONS	MADE BY	DATE
1	RENAMED STD DWG FROM C-10.61 TO C-10.50 & REVISED TITLE	RLF	9/04
2	REVISED VIEW: REMOVED EXTRA LINE	RLF	5/12
3			
4			

GENERAL NOTES

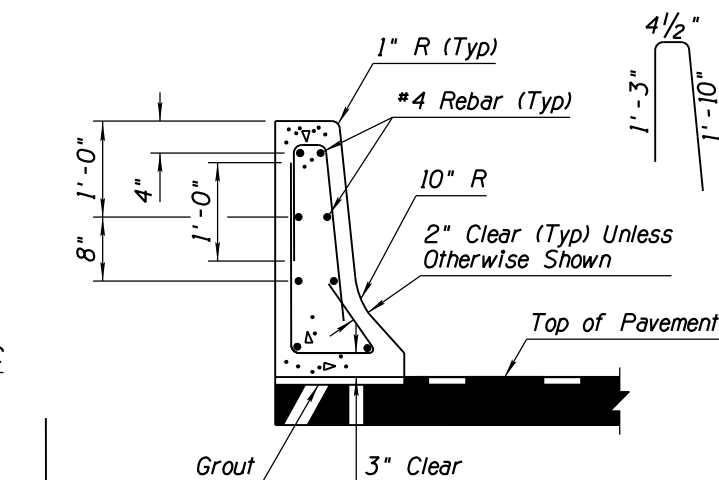
- Concrete half barrier shall be precast.
- Concrete shall be Class S, $f'_c=4000$ PSI.
- Pavement thickness adjacent to half barrier shall be $\frac{3}{4}$ " minimum.
- The half barrier shall be placed upon a bed of grout in order to provide a uniform bearing.
- Doweled joints shall be grouted under pressure until all of the openings and the joints are filled.
- All bend dimensions for rebar are out-to-out of rebars.
- Weep holes shall be placed whenever half barrier is backfilled unless otherwise indicated on the plans.



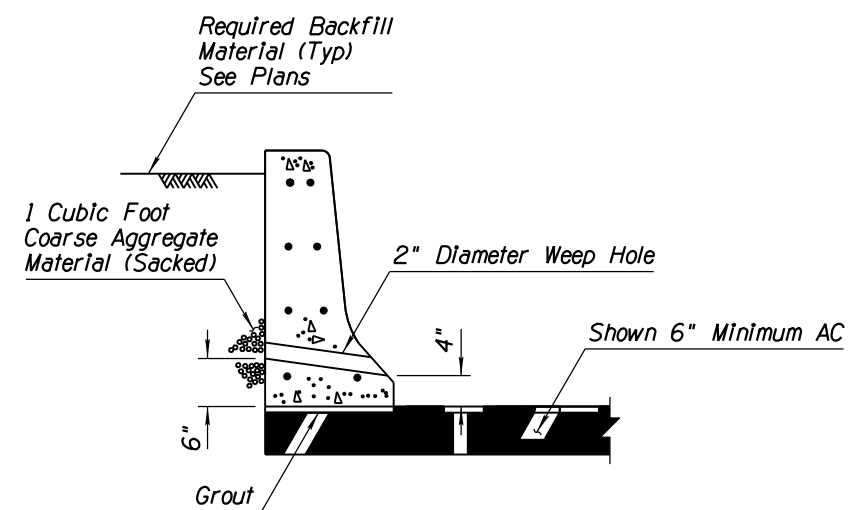
CONSTRUCTION JOINT DETAIL



SECTION A-A



AT REBAR SECTION B-B
SEE SECTION A-A FOR TYPICAL REBAR PLACEMENT



AT WEEP HOLE SECTION C-C
SEE SECTION A-A FOR TYPICAL REBAR PLACEMENT

APPROVED FOR DESIGN 	STATE OF ARIZONA DEPARTMENT OF TRANSPORTATION ROADWAY STANDARD DRAWINGS	REV. 5/12
APPROVED FOR DISTRIBUTION 	CONCRETE HALF BARRIER 32" TYPE 'F' PRECAST	DRAWING NO. C-10.50 Sheet 2 of 2