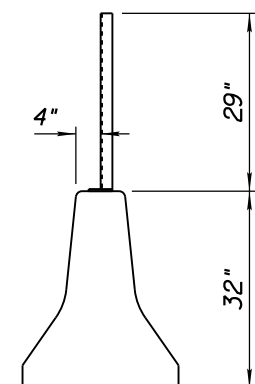


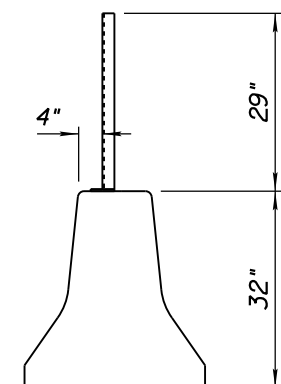
| NO. | DESCRIPTION OF REVISIONS | MADE BY | DATE |
|-----|---|---------|------|
| 1 | RENAMED STANDARD DRAWING FROM C-10.97, SHEET 1 OF 3 | RLF | 9/04 |
| 2 | CORRECTED DRAWING REVISION DATE | RLF | 7/06 |
| 3 | | | |
| 4 | | | |

GENERAL NOTES

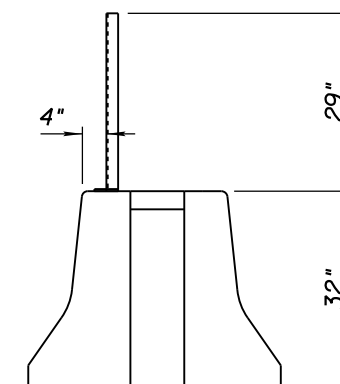
1. Posts shall be 12'-6" center to center. Structural steel shall conform to ASTM A36, galvanized in accordance with ASTM A123.
2. Hex head bolt shall conform to ASTM A307, galvanized in accordance with ASTM A153 Class C.
3. Helical spring lock washer shall conform to ASTM A313, galvanized in accordance with ASTM A153 Class C.
4. Tension wire: AWG number 9 (0.148") galvanized in accordance with ASTM A116 Class 2.
5. Hog ring: AWG number 12 (0.105") galvanized in accordance with ASTM A116 Class 2. Fasten glare screen to top and bottom tension wire spaced approximately 2' apart.
6. Glare Screen: 18 gauge steel. ASTM A526, galvanized in accordance with ASTM A525/(G235), expanded to the following dimensions: 1.33" shortway of diamond and 4.0" longway of diamond (center to center of bridges) with a strand width of 0.250" angled at approximately 20° to the plane of the original sheet. Top edge to be shop curled and crimped on 12" center to center. Glare screen shall be installed such that flat portion of screen blocks light from headlights. See Direction Detail, Sheet 2 of 2.
7. Splices allowed in glare screen at posts only, with one full diamond overlap.
8. Glare screen shall be constructed without interruption to the greatest degree possible.



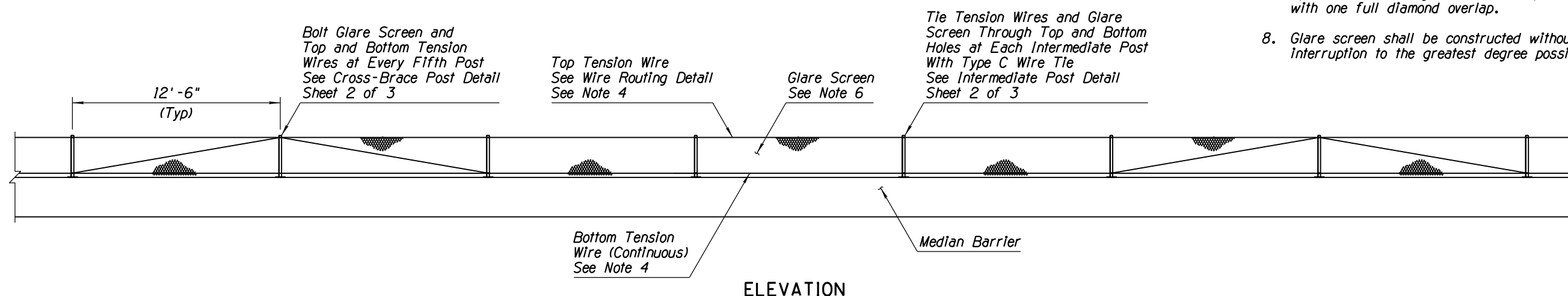
GLARE SCREEN
INSTALLATION ON
STANDARD MEDIAN BARRIER



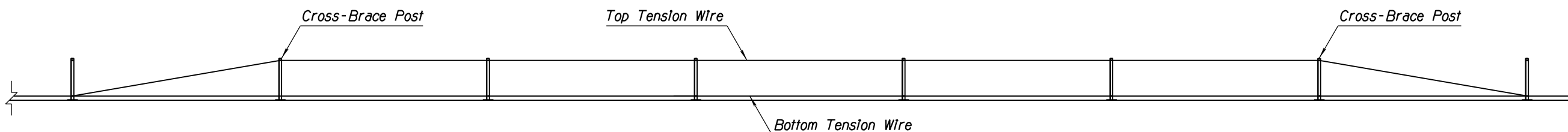
GLARE SCREEN
INSTALLATION ON
MEDIAN BARRIER TRANSITION



GLARE SCREEN
INSTALLATION ON
HALF BARRIER AT BRIDGE PIER



ELEVATION



TENSION WIRE ROUTING DETAIL

| | | |
|-------------------------------|---|--|
| APPROVED FOR DESIGN | STATE OF ARIZONA DEPARTMENT OF TRANSPORTATION ROADWAY STANDARD DRAWINGS | REV. 5/12 |
| APPROVED FOR DISTRIBUTION | GLARE SCREEN CONCRETE MEDIAN BARRIER | DRAWING NO. C-10.42 Sheet 1 of 3 |