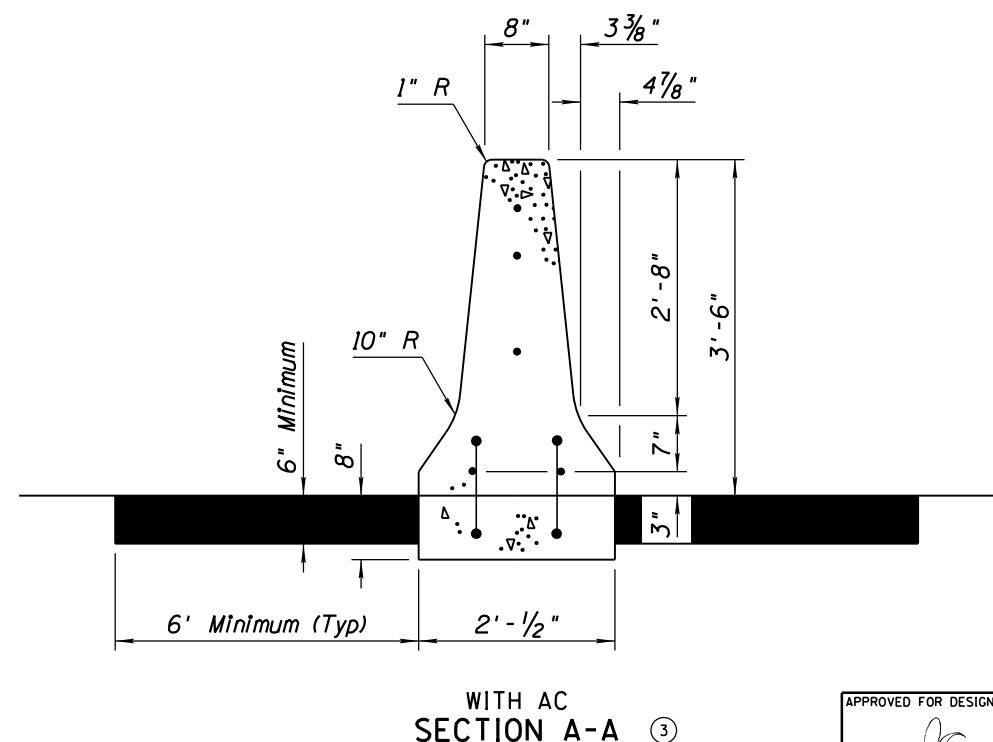
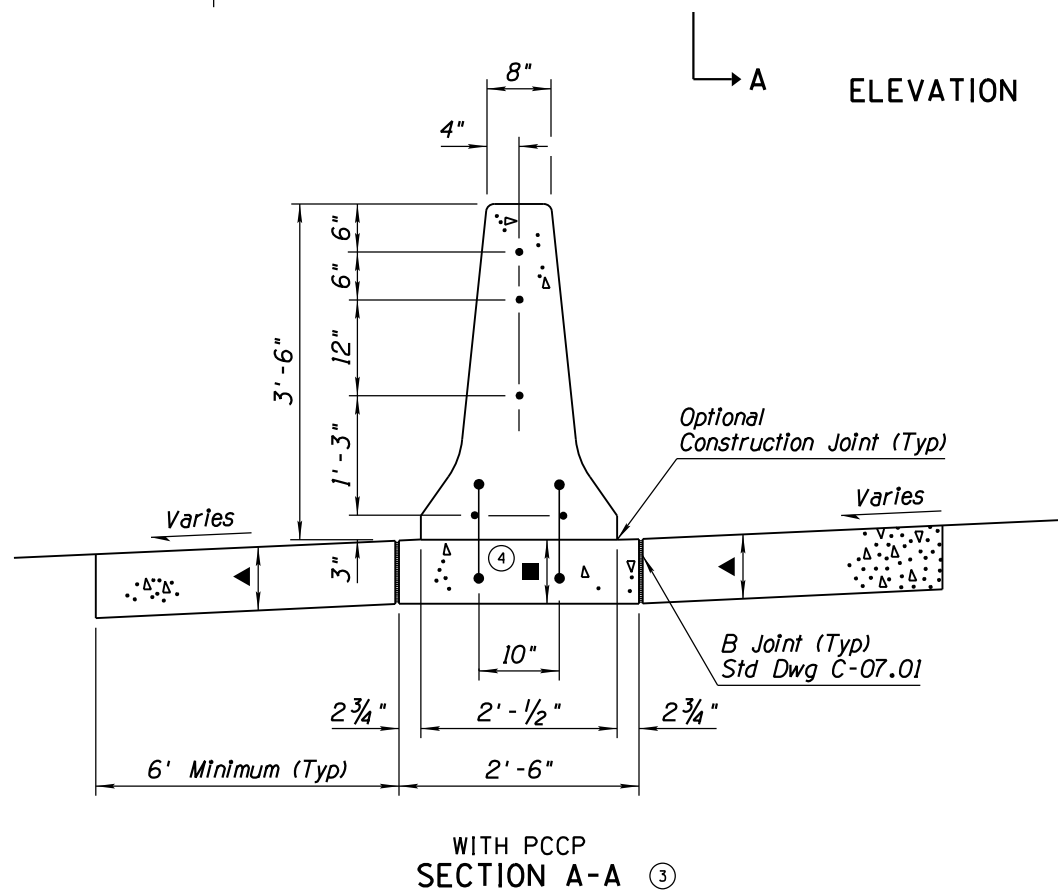
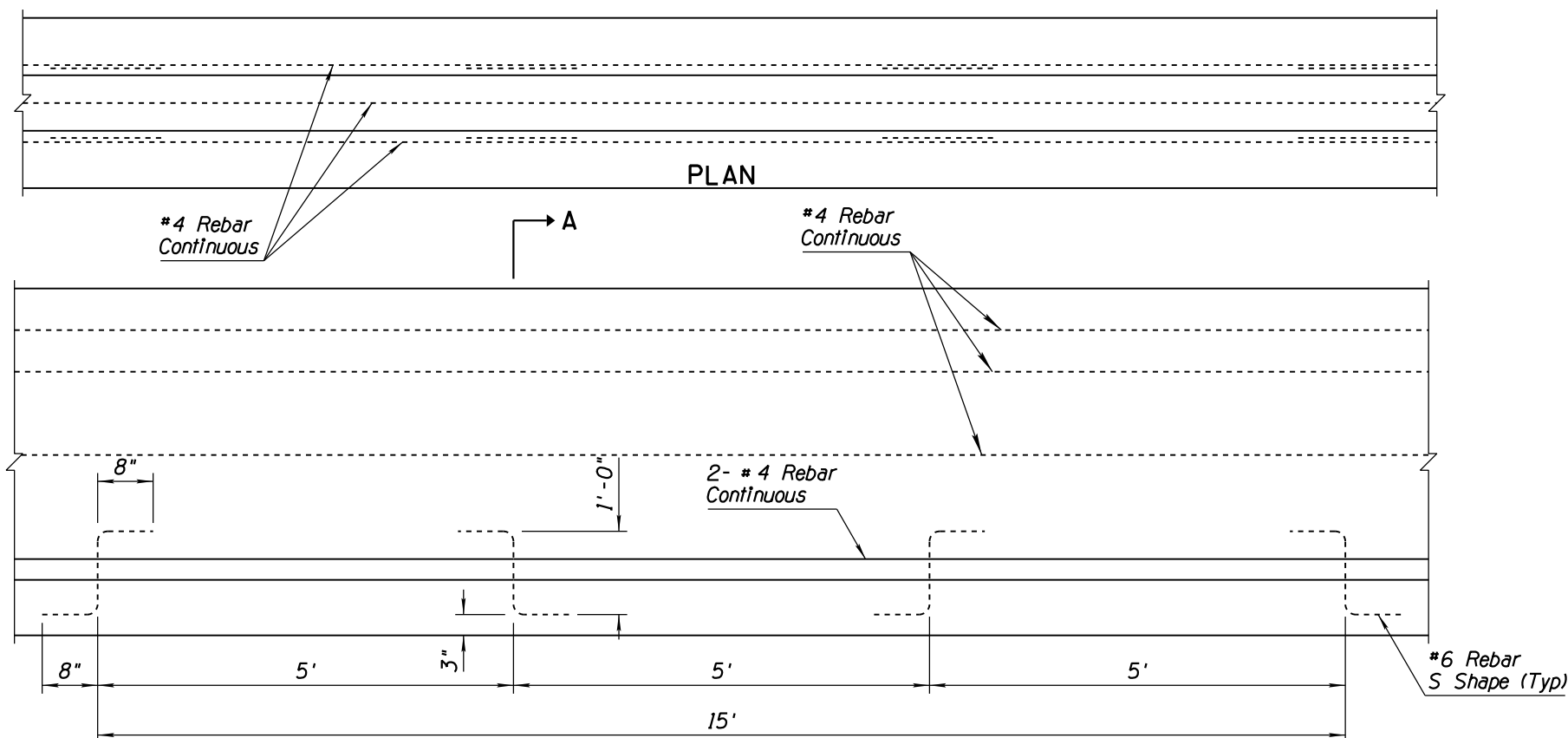


NO	DESCRIPTION OF REVISIONS	MADE BY	DATE
1	RENAMED STD DWG FROM C-10.67 & REVISED TITLE	RLF	9/04
2	REVISED GENERAL NOTE 3	RLF	9/04
3	RELOCATED #4 REBARS	RLF	9/04
4	REVISED SECTION VIEW AND NOTES ▲ & ■	RLF	5/12

GENERAL NOTES

- Median Barrier shall be constructed by the slip form or by the formed cast-in-place method.
 - When obstacles prevent the use of slip form equipment, stationary forms shall be used.
 - Concrete shall be Class S, $f'_c = 4000$ PSI.
 - If the footing and barrier are cast monolithically, #6 S shape rebars are not required.
 - Barrier width shall not exceed the barrier footing width nor overhang the adjacent pavement.
 - #4 rebar shall extend 12" past the construction joint at the completion of the day's pour.
- ▲ Depth to match adjacent PCCP thickness.
 ■ Footing depth shall match adjacent PCCP thickness and shall consist of either
- full-depth concrete, or
 - 8" concrete over compacted AB (Class 2).
- See Special Provisions for measurement and payment.



APPROVED FOR DESIGN <i>[Signature]</i>	STATE OF ARIZONA DEPARTMENT OF TRANSPORTATION ROADWAY STANDARD DRAWINGS	REV. 5/12
APPROVED FOR DISTRIBUTION <i>[Signature]</i>	CONCRETE MEDIAN BARRIER 42" TYPE 'F' CAST-IN-PLACE ①	DRAWING NO. C-10.41 ①