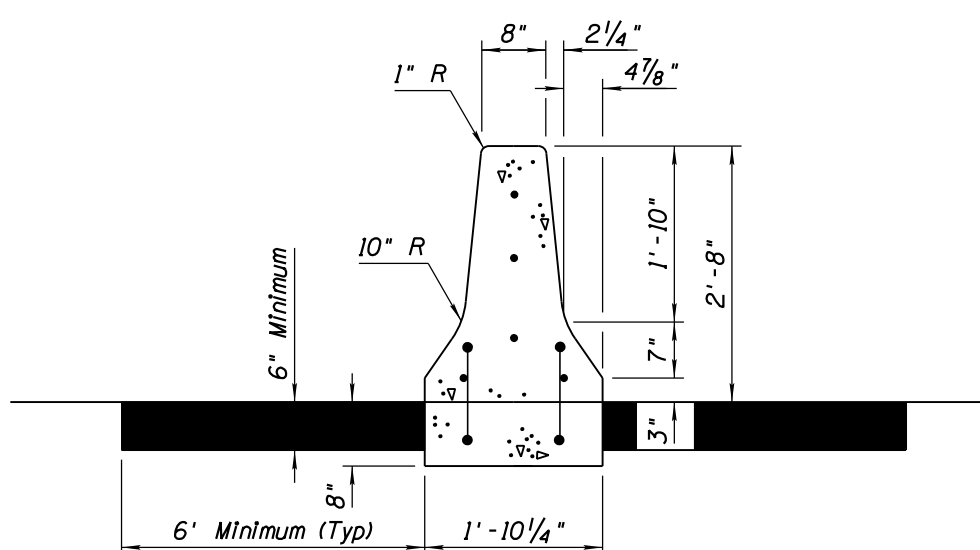
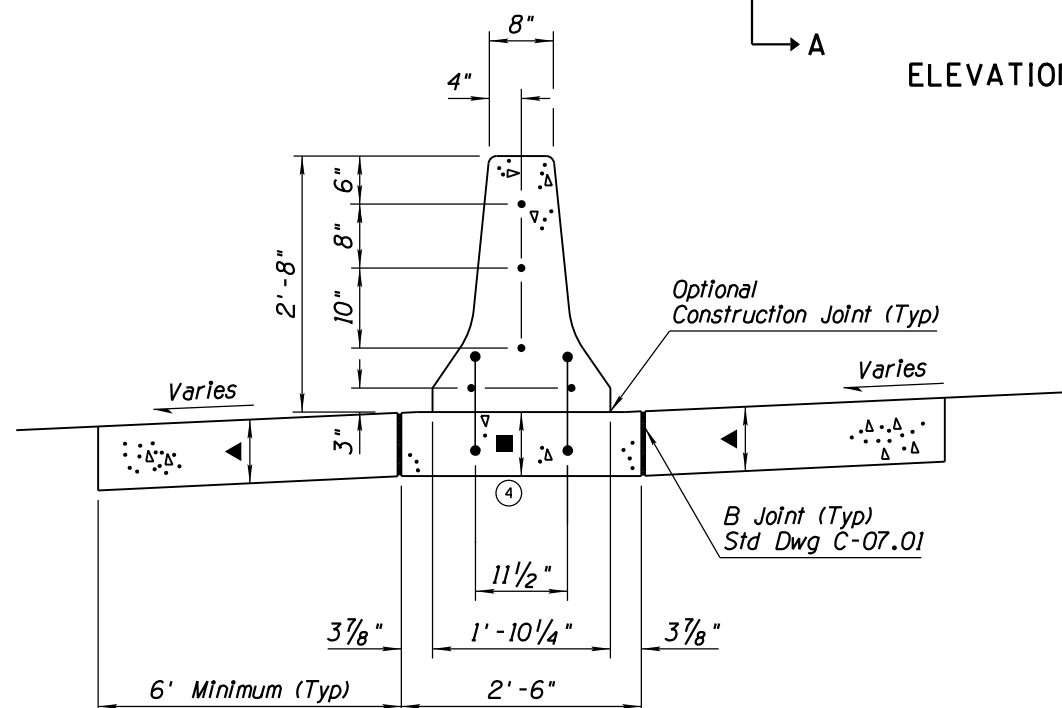
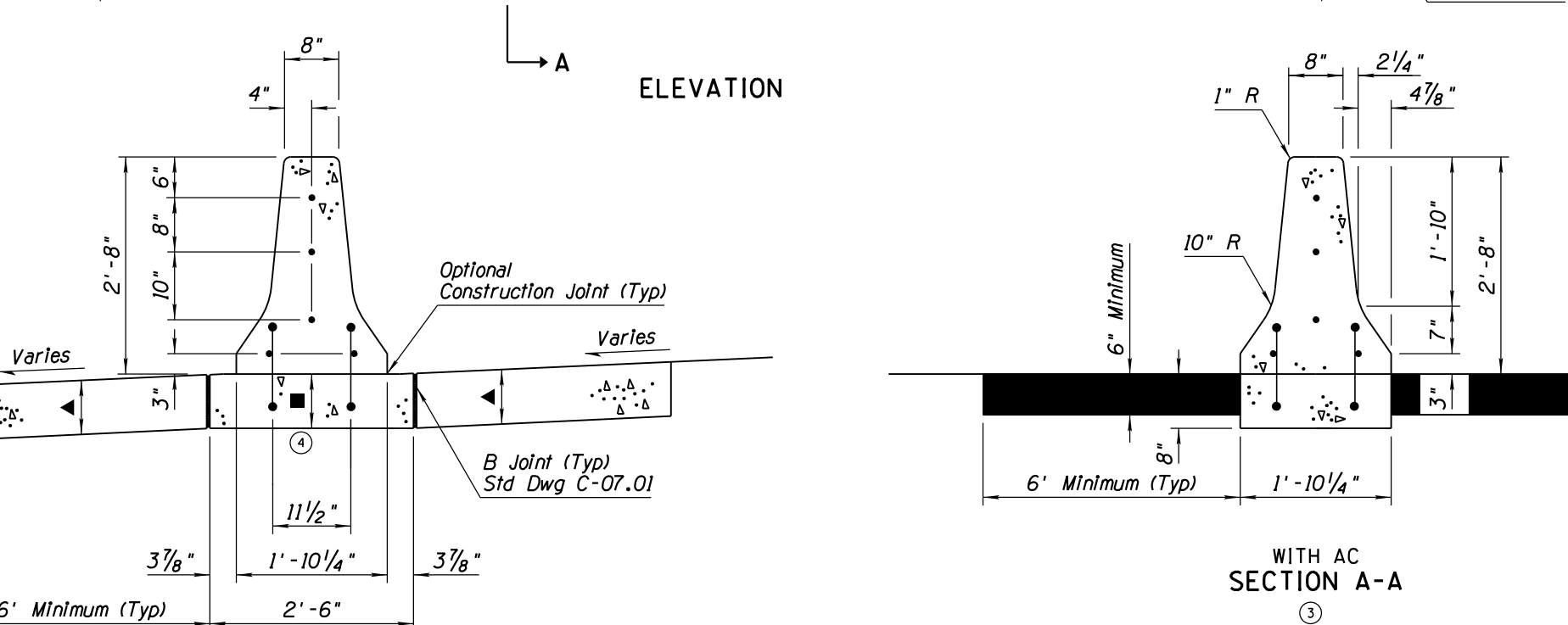
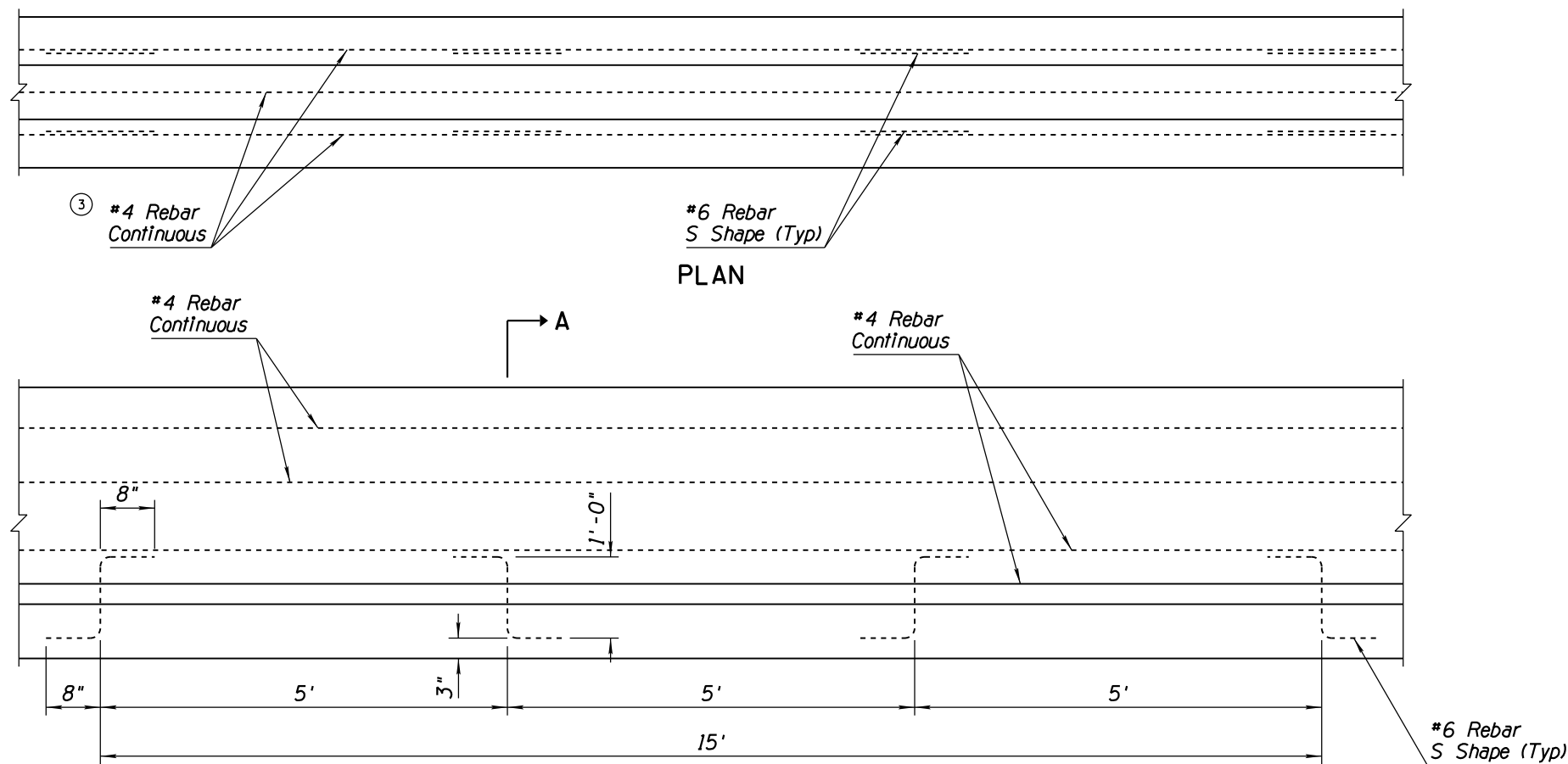


NO.	DESCRIPTION OF REVISIONS	MADE BY	DATE
1	RENAMED STD DWG C-10.66 & REVISED TITLE	RLF	9/04
2	REVISED GENERAL NOTE 3	RLF	9/04
3	RELOCATED # 4 REBARS	RLF	9/04
4	REVISED SECTION VIEW AND NOTE	RLF	5/12

### GENERAL NOTES

1. Median Barrier shall be constructed by the slip form or formed cast-in-place method.
  2. When obstacles prevent the use of slip form equipment, stationary forms shall be used.
  - ② 3. Concrete shall be Class S,  $f'_c = 4000$  PSI.
  4. If the footing and barrier are cast monolithically, #6 S shape rebars are not required.
  5. Barrier width shall not exceed the barrier footing width nor overhang the adjacent pavement.
  6. #4 Rebar shall extend 12" past the construction joint at the completion of the day's pour.
- ▲ Depth to match adjacent PCCP thickness.
- ④ ■ Footing depth shall match adjacent PCCP thickness and shall consist of either
- a) full-depth concrete, or
  - b) 8" concrete over compacted AB (Class 2).
- See Special Provisions for measurement and payment.



APPROVED FOR DESIGN 	STATE OF ARIZONA DEPARTMENT OF TRANSPORTATION ROADWAY STANDARD DRAWINGS	REV. 5/12
APPROVED FOR DISTRIBUTION 	CONCRETE MEDIAN BARRIER 32" TYPE 'F' CAST-IN-PLACE	DRAWING NO. ① C-10.40

normal.tb1