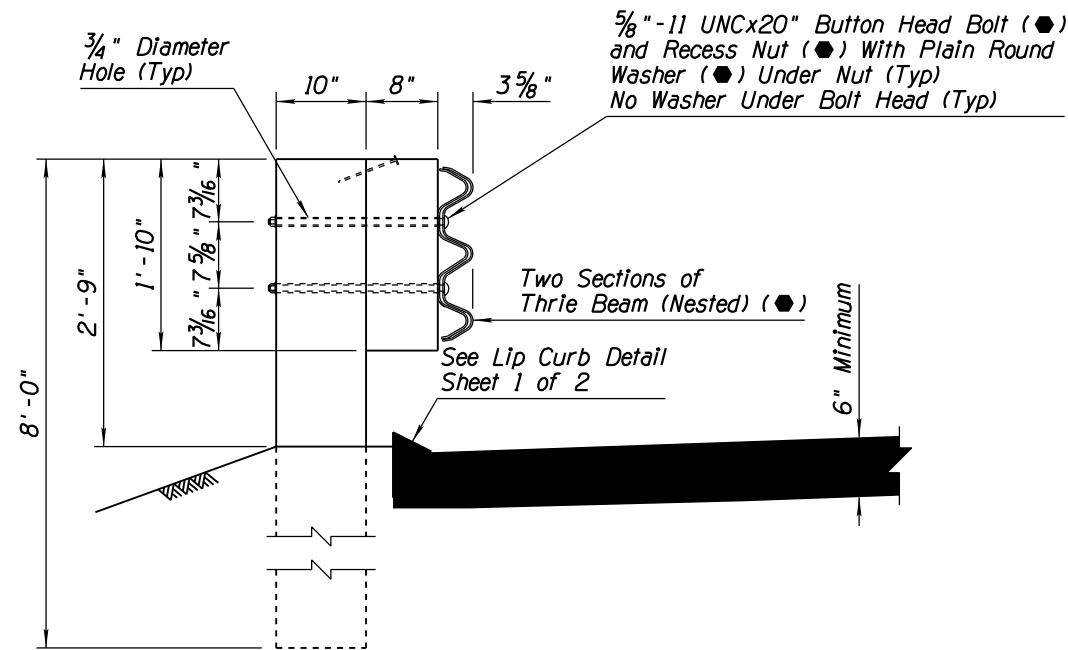


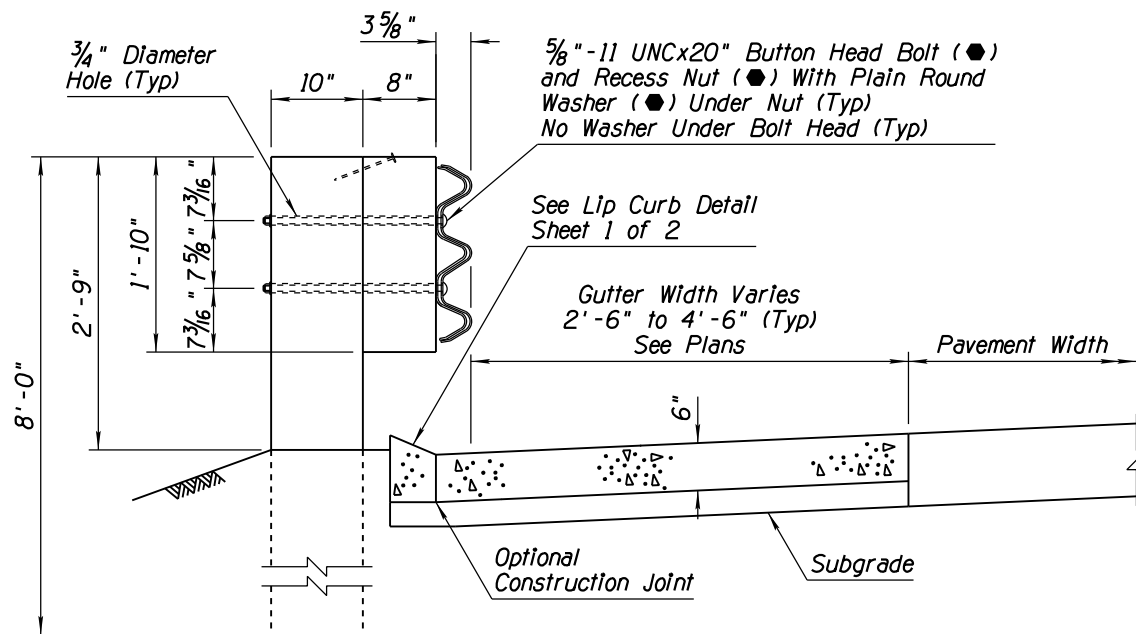
NO	DESCRIPTION OF REVISIONS	MADE BY	DATE
1	NEW STANDARD DRAWING	RLF	7/05
2			
3			
4			

### GENERAL NOTES

- Anchor Plate shall conform to ASTM specification A36. Bolts, washers and Anchor Plate shall be galvanized or, at the contractors option, stainless steel bolts and washers may be used.
  - Two-inch deep contraction joints shall be placed in the curb and the gutter at locations which match the joints in adjacent PCCP and at approximate 15' centers when adjacent to AC pavement. Joints shall be either hand-tooled or sawn.
- - Indicates AASHTO, AGC & ARTBA Task Force 13 Report designation

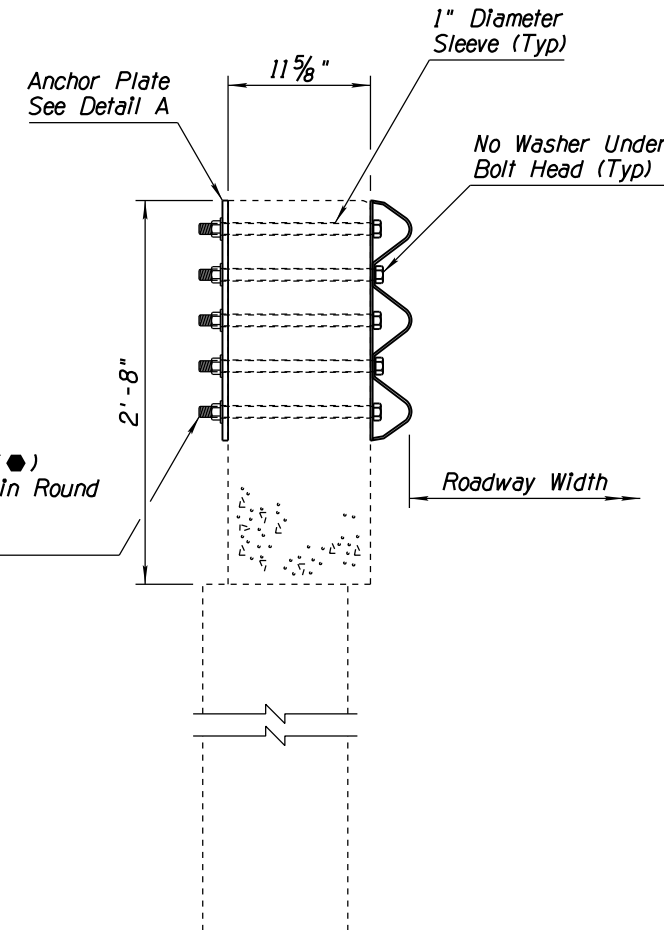


**SECTION A-A  
AC OPTION**

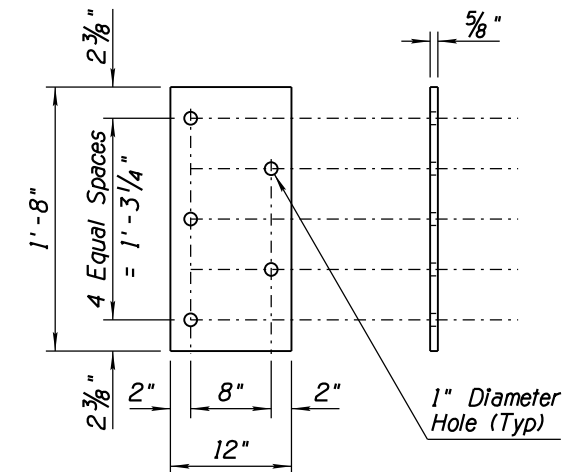


**SECTION A-A  
CONCRETE OPTION**

7/8" -9 UNCx14" Hex Bolt (A325) (●) and Hex Nut (A325) (●) With Plain Round Washer (●) (Under Nut) (Typ) 5 Required



**SECTION B-B**



**ANCHOR PLATE - DETAIL A**

APPROVED FOR DESIGN 	STATE OF ARIZONA DEPARTMENT OF TRANSPORTATION ROADWAY STANDARD DRAWINGS	REV. 5/12
APPROVED FOR DISTRIBUTION 	GUARDRAIL TRANSITION THRIE-BEAM TO CONCRETE HALF BARRIER 32" TYPE 'F'	DRAWING NO. C-10.30 Sheet 2 of 2