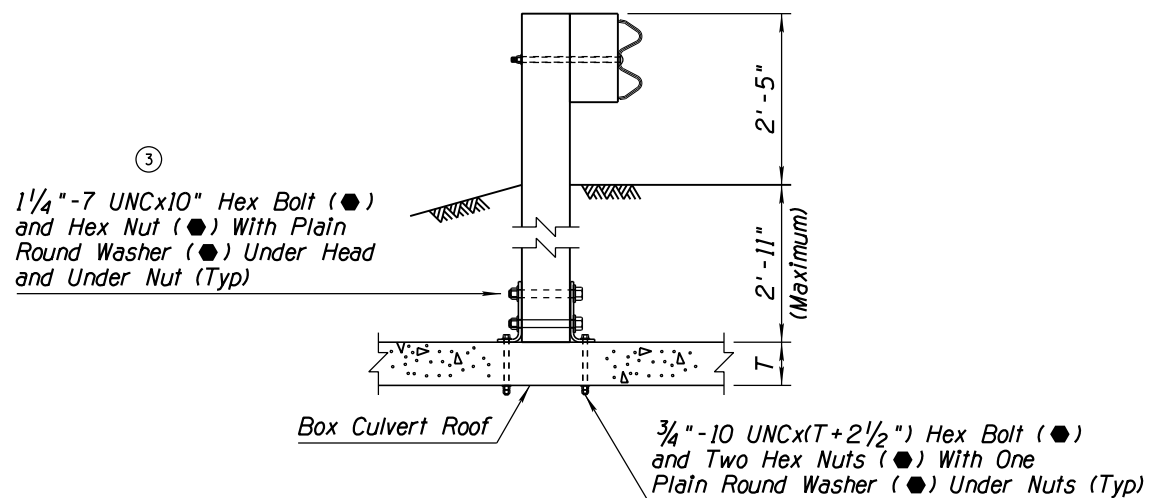


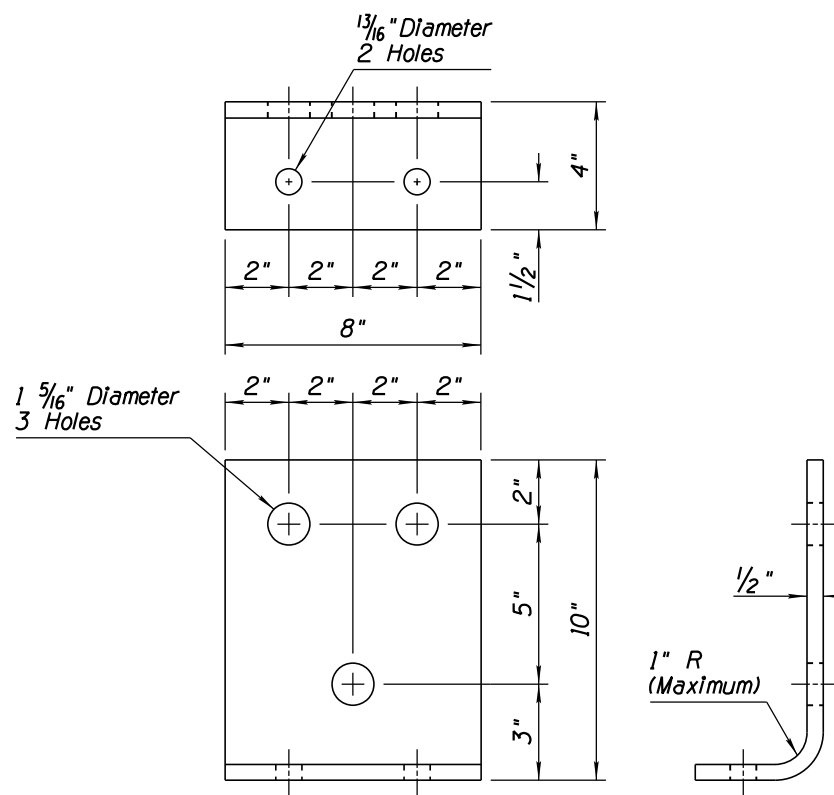
NO.	DESCRIPTION OF REVISIONS	MADE BY	DATE
1	RENAMED STD DWG FROM C-10.29, 2 OF 2 & REVISED TITLE	RLF	9/04
2	REVISED DESIGNATION	RLF	9/04
3	REVISED LENGTH	RLF	7/05
4			

GENERAL NOTES

- Bracket may be made of one piece hot bent, or two pieces welded together.
 - Short timber posts anchored to box culvert roof shall be 8" x 8" only.
- ② ● - Indicates AASHTO, AGC & ARTBA Task Force 13 Report designation

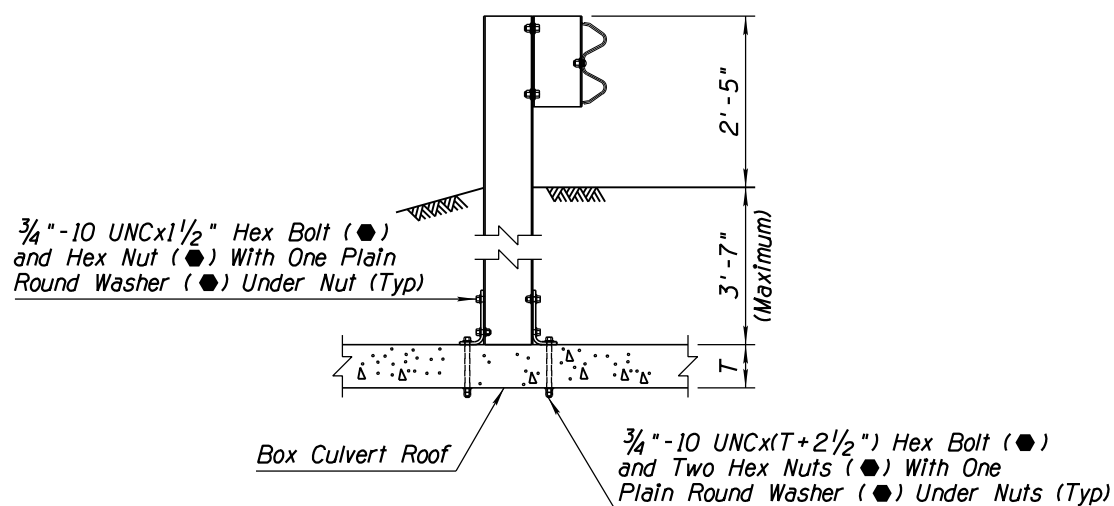


INSTALLATION DETAIL

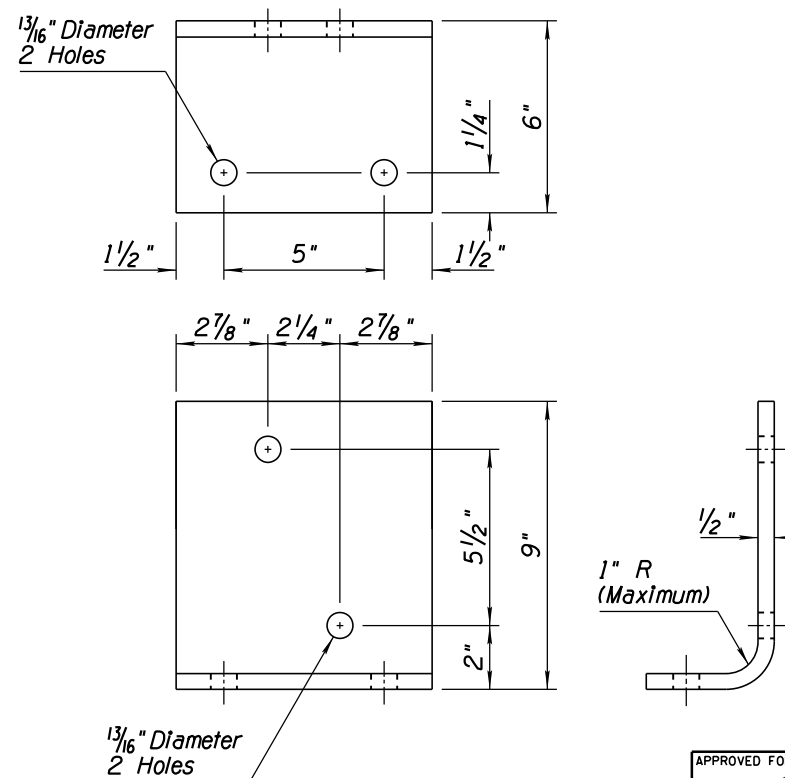


BRACKET DETAIL

BOLTED ANCHOR TIMBER POST INSTALLATION DETAIL



INSTALLATION DETAIL



BRACKET DETAIL

BOLTED ANCHOR STEEL POST INSTALLATION DETAIL

APPROVED FOR DESIGN 	STATE OF ARIZONA DEPARTMENT OF TRANSPORTATION ROADWAY STANDARD DRAWINGS	REV. 5/07
APPROVED FOR DISTRIBUTION 	W-BEAM GUARDRAIL BOLTED ANCHOR	DRAWING NO. ① C-10.07 Sheet 2 of 2