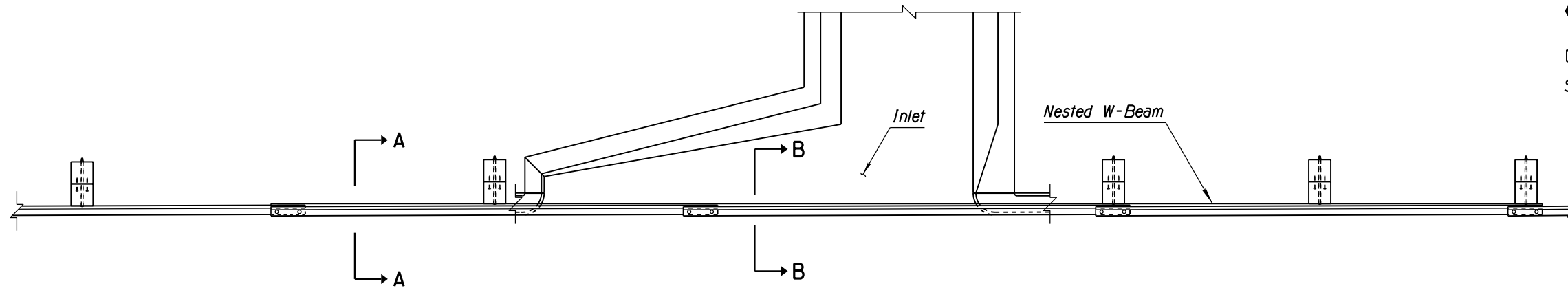


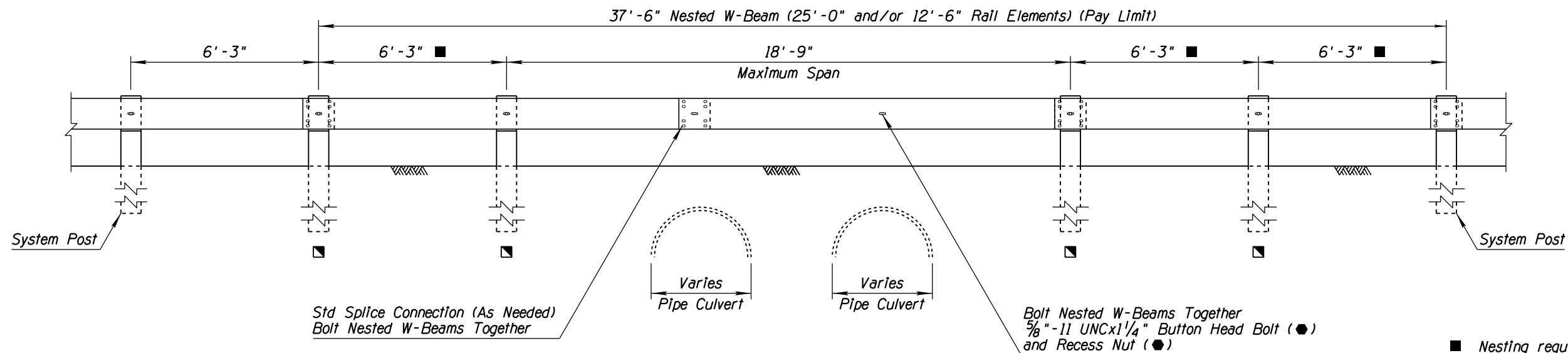
NO	DESCRIPTION OF REVISIONS	MADE BY	DATE
1	REVISED TITLE, SPLICE NOTES & GENERAL NOTES	RLF	11/09
2			
3			
4			

GENERAL NOTES

1. Use Type 3 Nested W-Beam to span downdrain or spillway inlets as shown in the plan view.
 2. Use Type 3 Nested W-Beam to span multiple obstructions as shown in the elevation view.
 3. For Type 3, a maximum of two posts may be eliminated within a span of nested guardrail.
 4. Minimum length of nested guardrail is one 6'-3" post spacing on each side of maximum span.
 5. Guardrail shall be lapped in the direction of adjacent traffic.
- - Indicates AASHTO, AGC & ARTBA Task Force 13 Report designation
 ■ 72" Timber Post
 See Sheet 1 of 2 for Sections A-A and B-B



PLAN



ELEVATION

TYPE 3 (18'-9" SPAN)

■ Nesting requires one 6'-3" post spacing on one end of the span and two 6'-3" post spacings on the other end of the span for standard length guardrail elements. The one or two post spacings may be reversed to accommodate field conditions.

APPROVED FOR DESIGN 	STATE OF ARIZONA DEPARTMENT OF TRANSPORTATION ROADWAY STANDARD DRAWINGS	REV. 15/09
APPROVED FOR DISTRIBUTION 	W-BEAM GUARDRAIL NESTED TYPE 3	DRAWING NO. C-10.06 Sheet 2 of 2