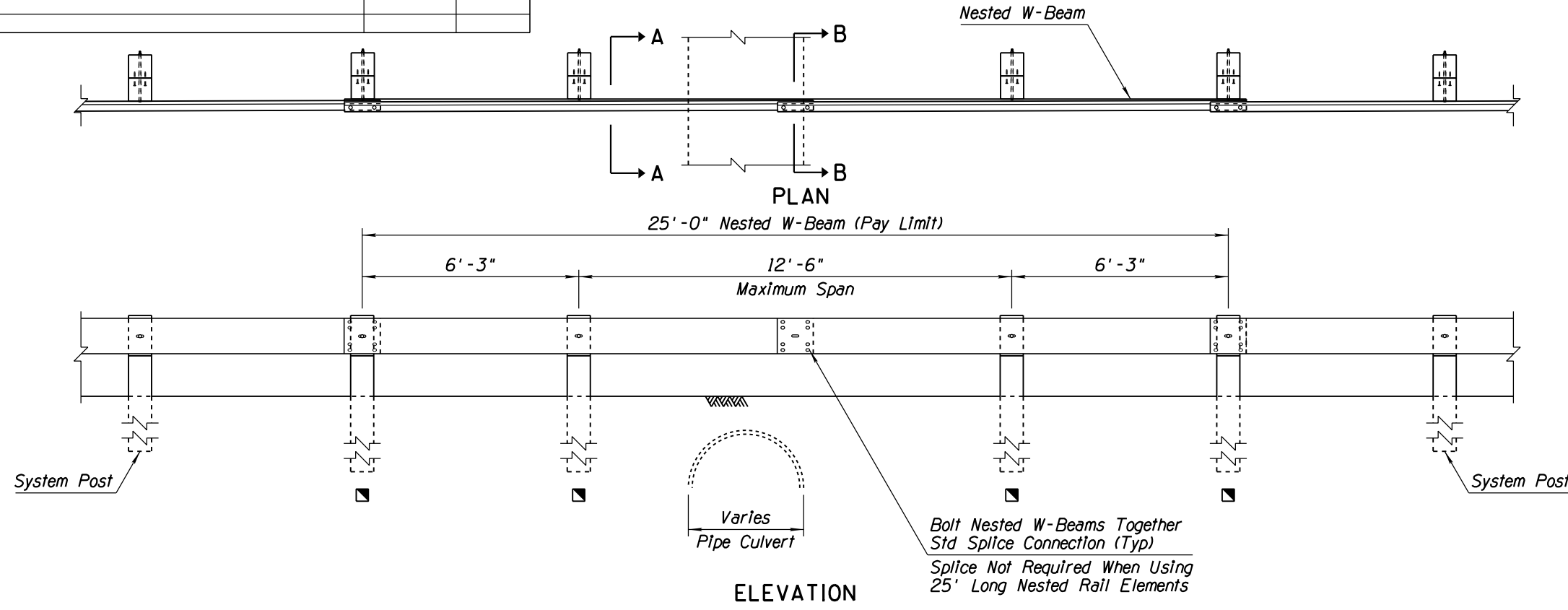


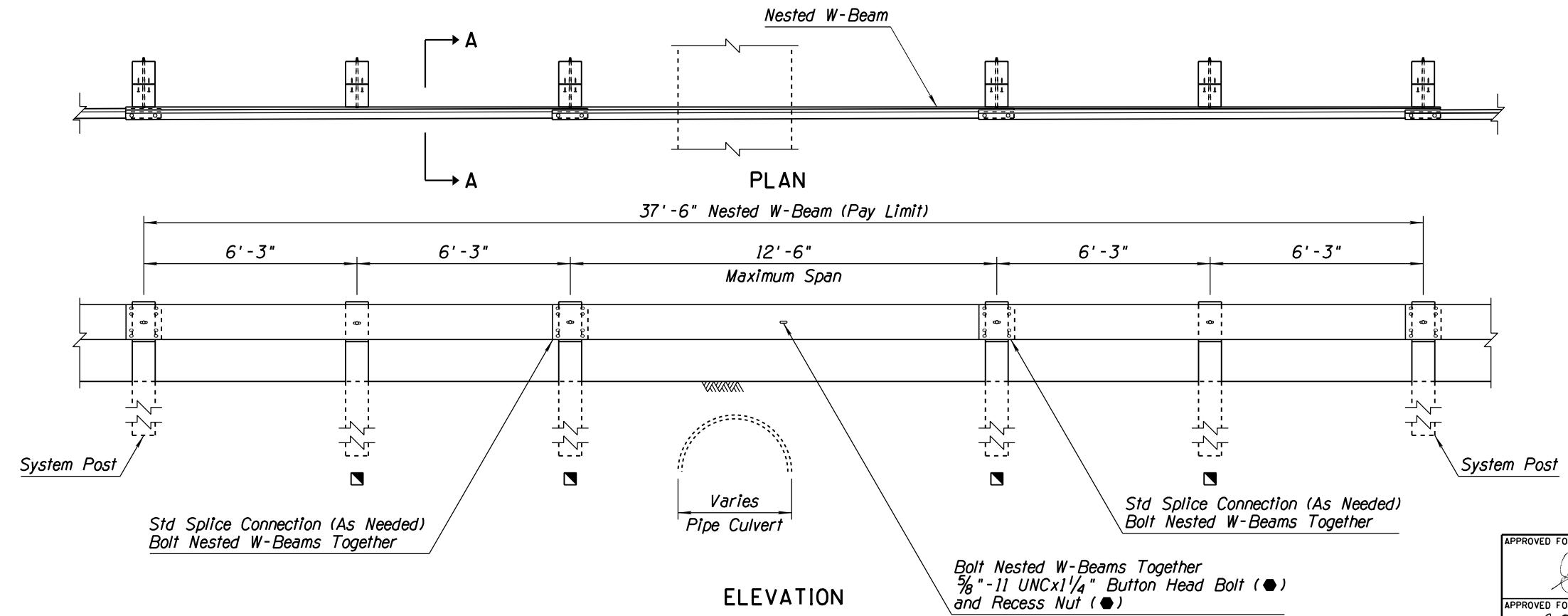
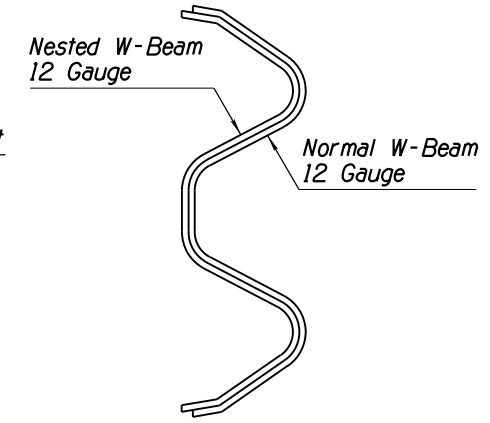
NO	DESCRIPTION OF REVISIONS	MADE BY	DATE
1	REVISED TITLES, SPLICE NOTES & GENERAL NOTES	RLF	11/09
2			
3			
4			

GENERAL NOTES

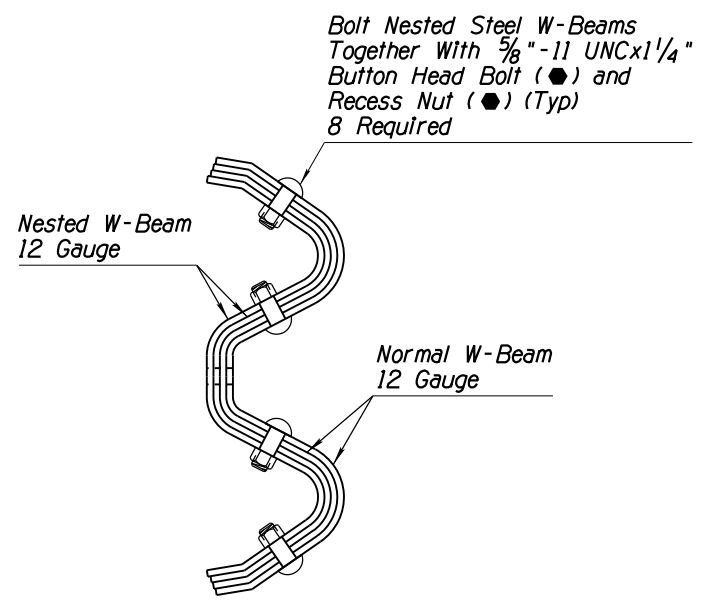
1. Construct either Type 1 or Type 2 for 12'-6" span.
 2. For Type 1 and Type 2, a maximum of one post may be eliminated within a span of nested guardrail.
 3. Minimum length of nested guardrail is one 6'-3" post spacing on each side of maximum span.
 4. See Std Dwgs C-10.03 and C-10.04 for additional information and dimensions.
 5. Guardrail shall be lapped in the direction of adjacent traffic.
- - Indicates AASHTO, AGC & ARTBA Task Force 13 Report designation
 ■ 72" Timber Post



TYPE 1 (SPLICE CONNECTION INSIDE 12'-6" SPAN)



TYPE 2 (SPLICE CONNECTION OUTSIDE 12'-6" SPAN)



APPROVED FOR DESIGN <i>[Signature]</i>	STATE OF ARIZONA DEPARTMENT OF TRANSPORTATION ROADWAY STANDARD DRAWINGS	REV. 5/12
APPROVED FOR DISTRIBUTION <i>[Signature]</i>	W-BEAM GUARDRAIL NESTED TYPES 1 AND 2	DRAWING NO. C-10.06 Sheet 1 of 2