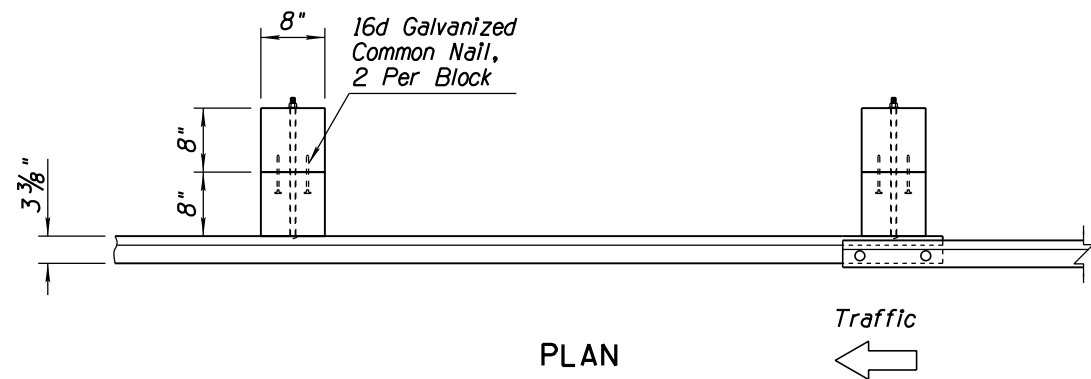


NO.	DESCRIPTION OF REVISIONS	MADE BY	DATE
1	REVISED DESIGNATION	RLF	9/04
2	REVISED GENERAL NOTE 1 & ADDED GENERAL NOTE 2	RLF	9/04
3	RENAMED STD DRAWING FROM C-10.20 AND REVISED TITLE	RLF	9/04
4	REMOVED 29 INCH DIMENSION	RLF	7/05

GENERAL NOTES

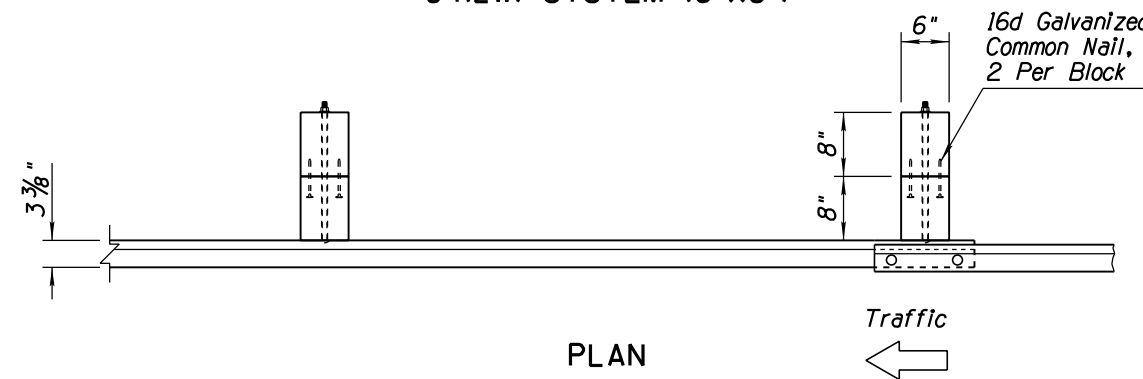
- ② 1. The control height for guardrail system is 28" to the top of rail, measured at the face of rail from the normal finished shoulder elevation.
- ② 2. Guardrail shall be lapped in the direction of adjacent traffic.
- ① ● - Indicates AASHTO, AGC & ARTBA Task Force 13 Report designation

G4(1W) SYSTEM (8"x8")

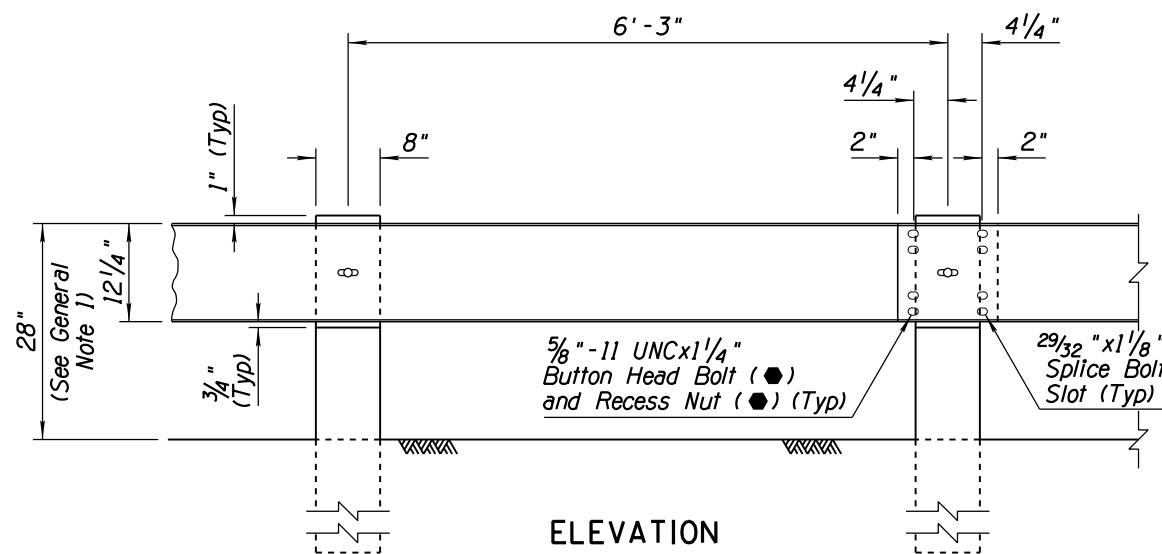


PLAN

G4(2W) SYSTEM (6"x8")

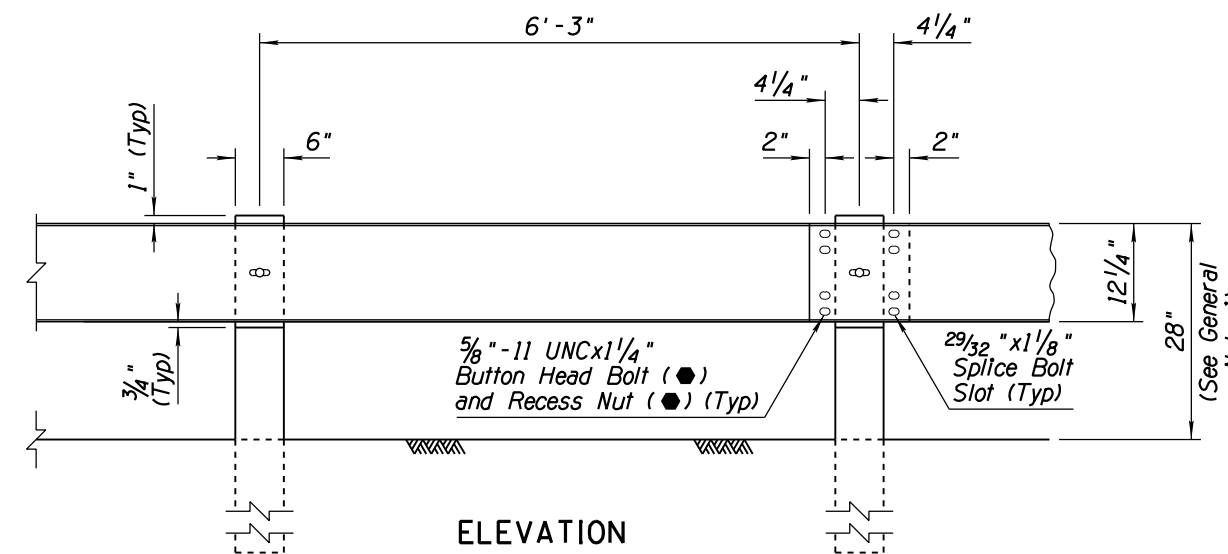


PLAN



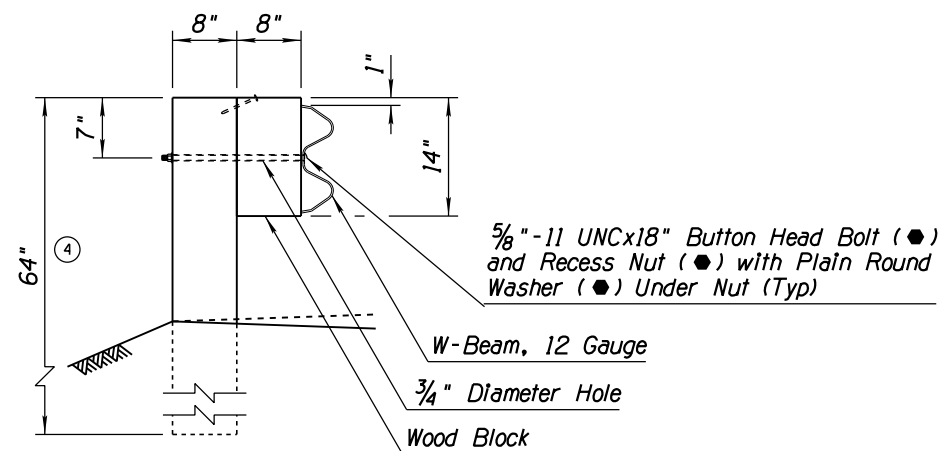
ELEVATION

G4(1W) SYSTEM (8"x8")

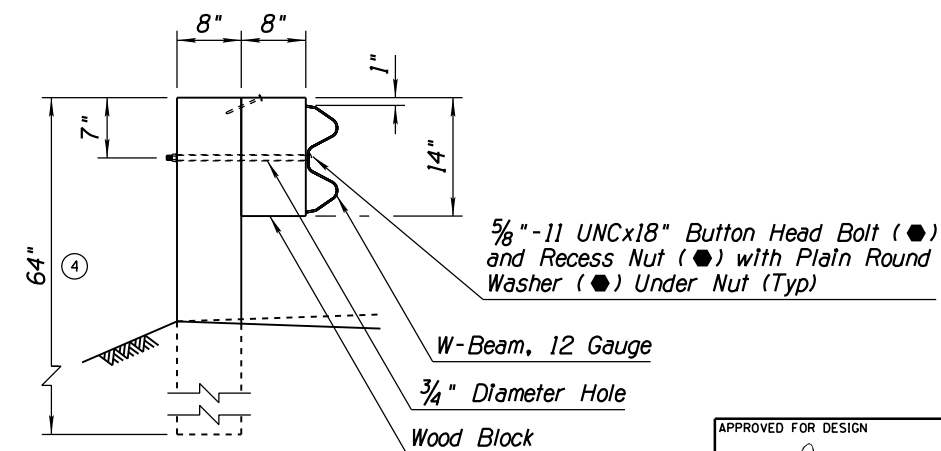


ELEVATION

G4(2W) SYSTEM (6"x8")



SECTION G4(1W)



SECTION G4(2W)

APPROVED FOR DESIGN 	STATE OF ARIZONA DEPARTMENT OF TRANSPORTATION ROADWAY STANDARD DRAWINGS	REV. 5/12
APPROVED FOR DISTRIBUTION 	W-BEAM GUARDRAIL G4(1W) AND G4(2W) BLOCKED-OUT TIMBER POST	DRAWING NO. C-10.03