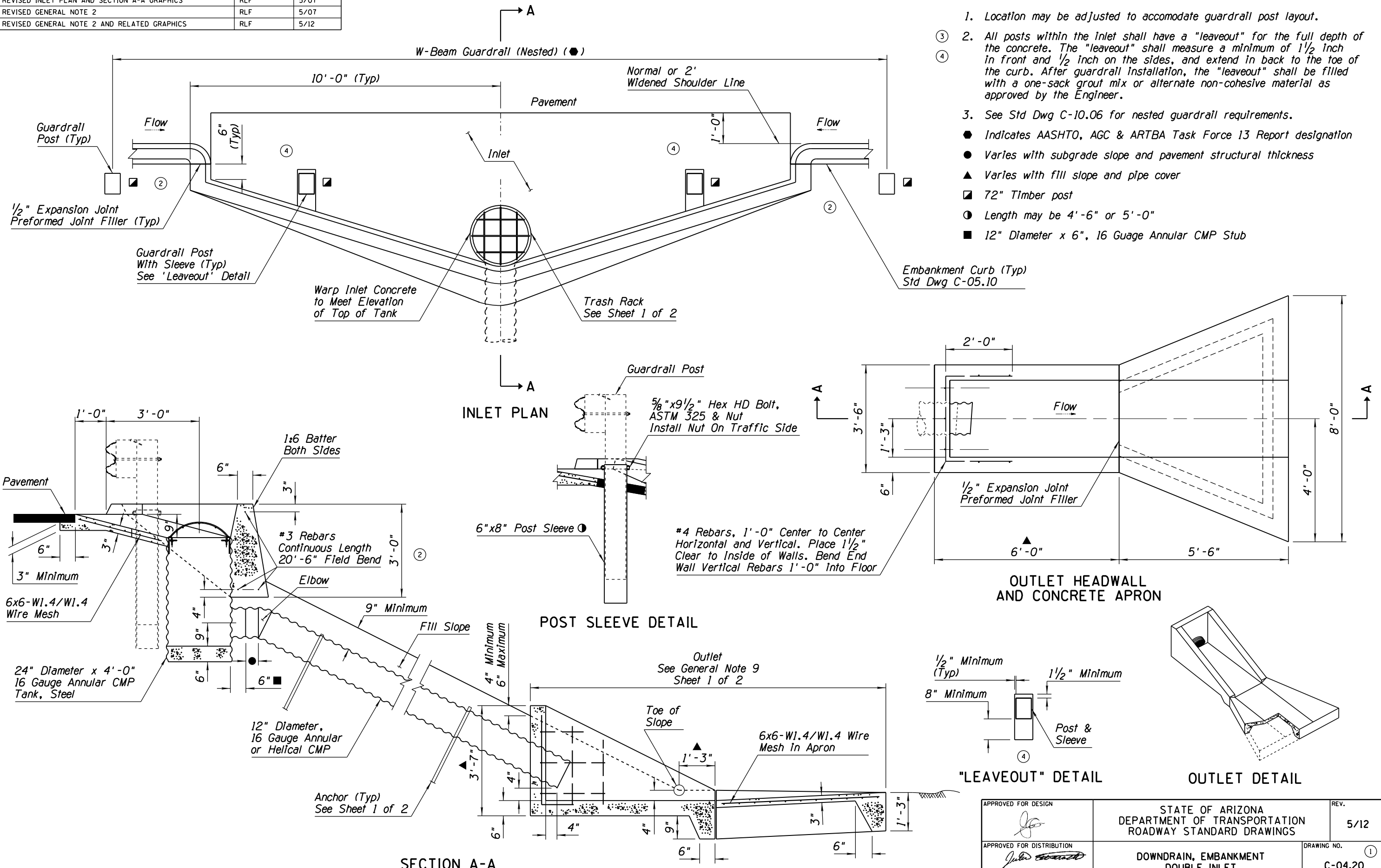


NO.	DESCRIPTION OF REVISIONS	MADE BY	DATE
1	NEW STANDARD DRAWING	RLF	7/05
2	REVISED INLET PLAN AND SECTION A-A GRAPHICS	RLF	5/07
3	REVISED GENERAL NOTE 2	RLF	5/07
4	REVISED GENERAL NOTE 2 AND RELATED GRAPHICS	RLF	5/12

### GENERAL NOTES

1. Location may be adjusted to accommodate guardrail post layout.
  2. All posts within the inlet shall have a "leaveout" for the full depth of the concrete. The "leaveout" shall measure a minimum of 1 1/2 inch in front and 1/2 inch on the sides, and extend in back to the toe of the curb. After guardrail installation, the "leaveout" shall be filled with a one-sack grout mix or alternate non-cohesive material as approved by the Engineer.
  3. See Std Dwg C-10.06 for nested guardrail requirements.
- Indicates AASHTO, AGC & ARTBA Task Force 13 Report designation
  - Varies with subgrade slope and pavement structural thickness
  - ▲ Varies with fill slope and pipe cover
  - 72" Timber post
  - Length may be 4'-6" or 5'-0"
  - 12" Diameter x 6", 16 Gauge Annular CMP Stub



APPROVED FOR DESIGN <i>[Signature]</i>	STATE OF ARIZONA DEPARTMENT OF TRANSPORTATION ROADWAY STANDARD DRAWINGS	REV. 5/12
APPROVED FOR DISTRIBUTION <i>[Signature]</i>	DOWNDRAIN, EMBANKMENT DOUBLE INLET	DRAWING NO. C-04.20 Sheet 2 of 2