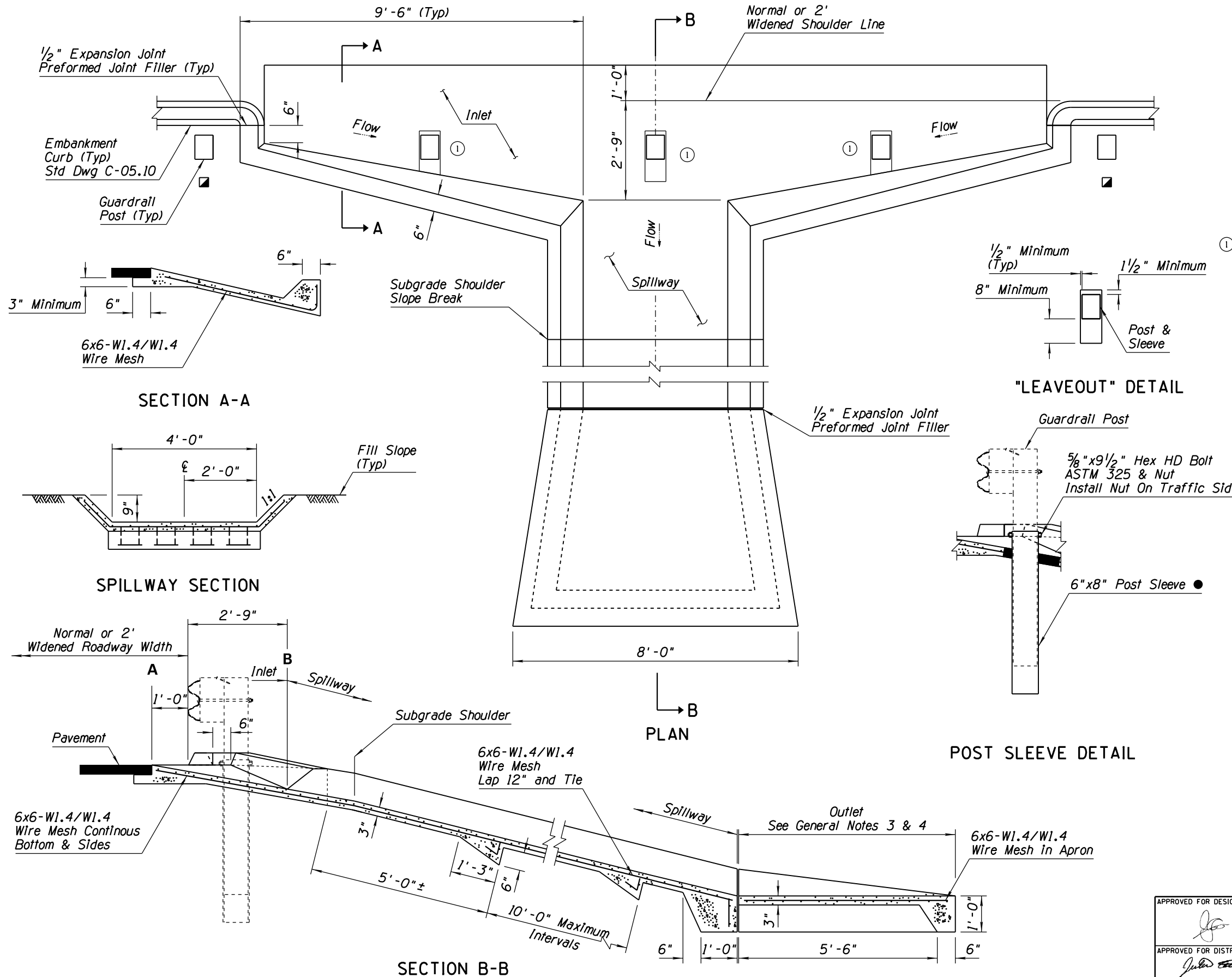


NO.	DESCRIPTION OF REVISIONS	MADE BY	DATE
1	REVISED GENERAL NOTE & LEAVEOUT GRAPHICS	RLF	5/12
2			
3			
4			

GENERAL NOTES

1. Location may be adjusted to accommodate guardrail post layout.
2. All concrete shall be Class B. Embankment curb concrete shall be in accordance with the Standard Specifications.
3. Where rock is encountered the outlet may be omitted, as approved by the Engineer.
4. When outlet is used, the wire mesh shall extend through the joint into the outlet instead of bending into the key.
5. Spillway invert slope shall be uniformly downward from A to B. See Section B-B.
6. See Std Dwg C-04.30 for spillway length.
7. All posts within the inlet shall have a "leaveout" for the full depth of the concrete. The "leaveout" shall measure a minimum of 1 1/2 inch in front and 1/2 inch on the sides, and extend in back to the toe of the curb. After guardrail installation, the "leaveout" shall be filled with a one-sack grout mix or alternate non-cohesive material as approved by the Engineer.
 - Length may be 4'-6" or 5'-0".



APPROVED FOR DESIGN <i>[Signature]</i>	STATE OF ARIZONA DEPARTMENT OF TRANSPORTATION ROADWAY STANDARD DRAWINGS	REV. 5/12
APPROVED FOR DISTRIBUTION <i>[Signature]</i>	SPILLWAY, EMBANKMENT DOUBLE INLET	DRAWING NO. C-04.10 Sheet 2 of 2