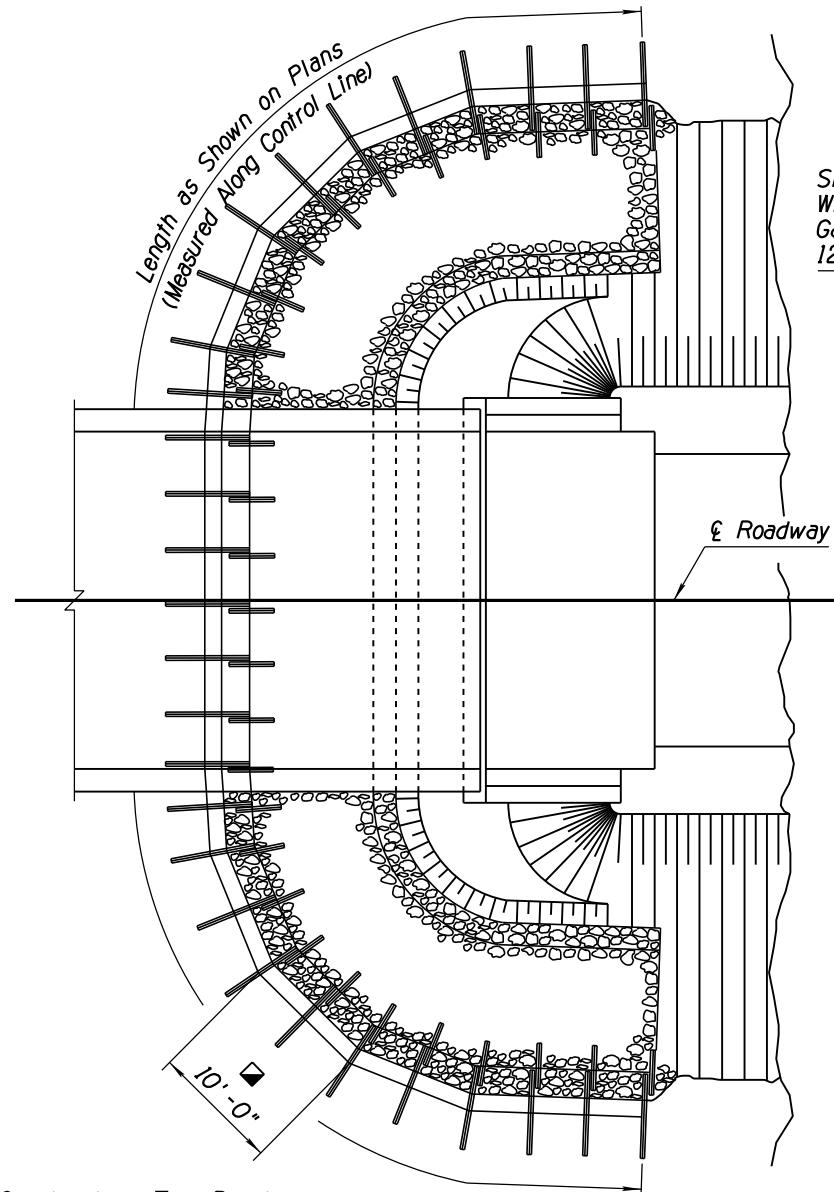
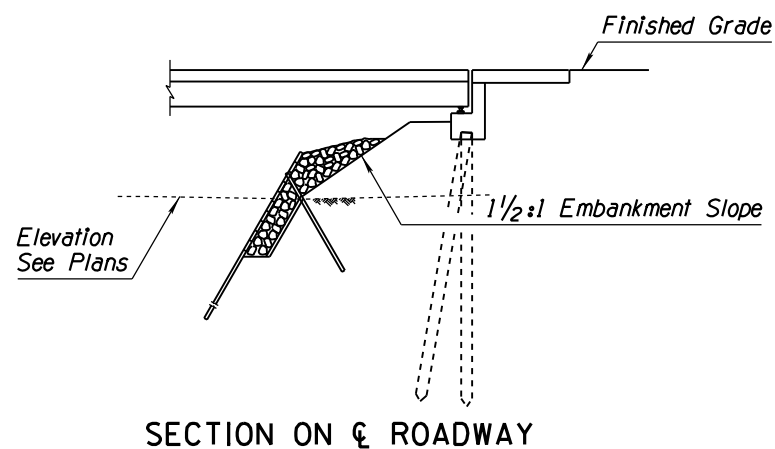


NO	DESCRIPTION OF REVISIONS	MADE BY	DATE
1	REVISED BOLT SPECIFICATION	RLF	5/12
2			
3			
4			

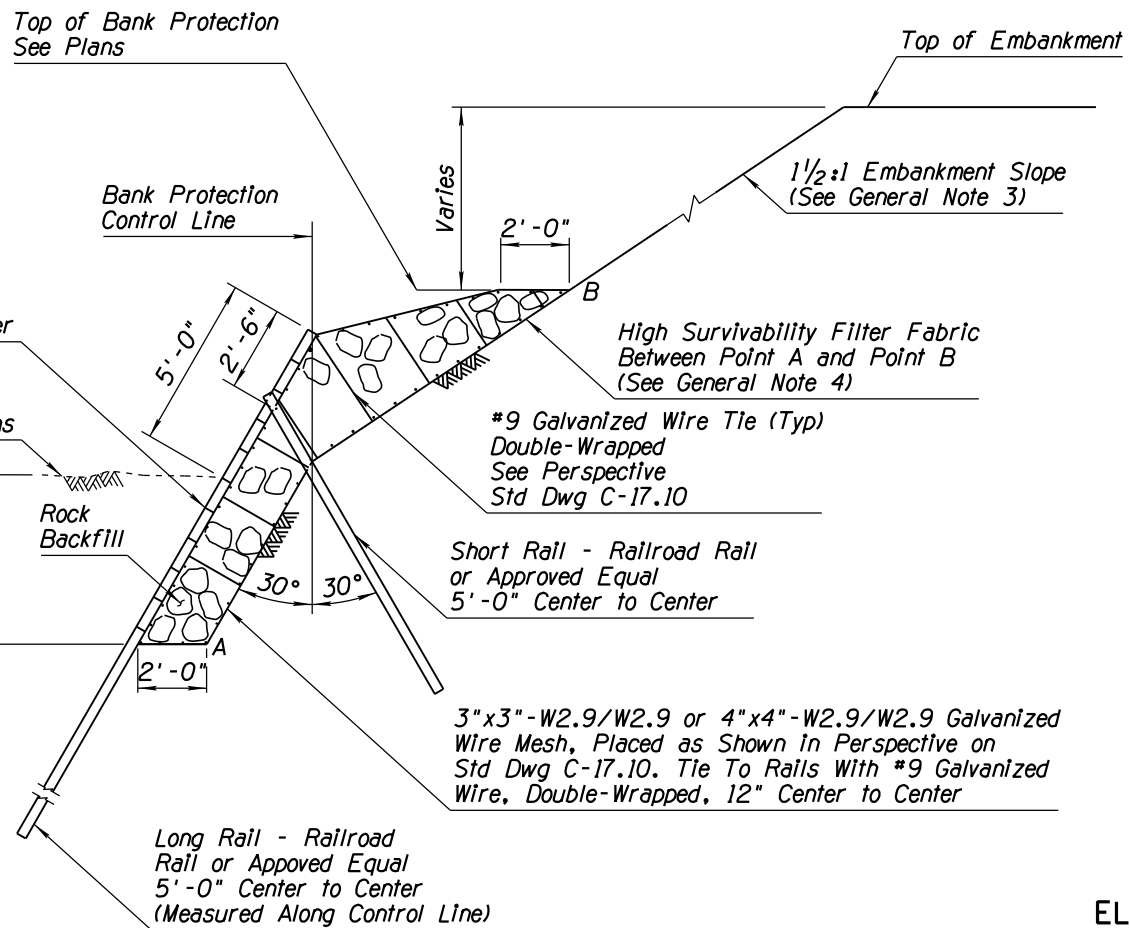


Construct on Two-Panel Chords Around Curves

PLAN OF BANK PROTECTION AT ABUTMENT



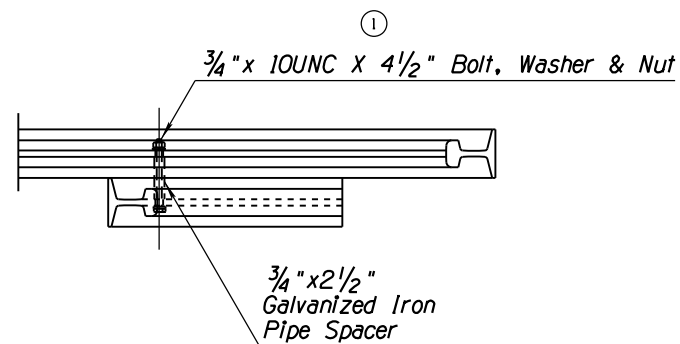
SECTION ON ROADWAY



TYPICAL SECTION

See Perspective Std Dwg C-17.10

Type	X (Ft-In)	Minimum Rail Length (Ft)		Minimum Rail Weight (Lbs/Yd)
		Long Rail	Short Rail	
4	5-0	22	10	50
5	7-6	25	13	50
6	10-0	28	16	50

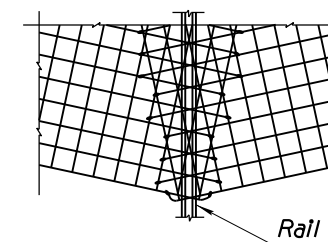


RAIL CONNECTION DETAIL

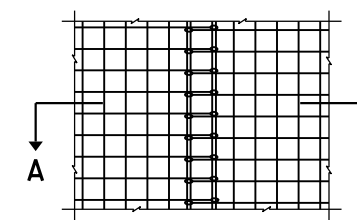
Burn Holes Through Rails in Field and Bolt Together as Shown

GENERAL NOTES

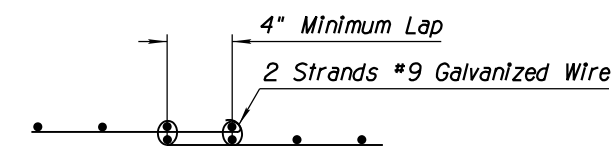
1. Rock shall conform to Section 913-2.01(A) of the Standard Specifications. The rock shall have a minimum nominal diameter no smaller than the mesh opening, and a maximum nominal diameter of 12".
2. All mesh wire, tie wire, cable, bolts, washers and nuts shall be galvanized.
3. When other embankment slope rates are encountered, warp to 1/2:1 or 2:1.
4. High survivability filter fabric shall conform to Section 913-2.05 of the Standard Specifications.
5. All wire mesh on a single project shall have the same mesh opening.



ELEVATION AT CHORD POINT ON CURVE



ELEVATION ON STRAIGHT SECTION



SECTION A-A
WIRE MESH SPLICE DETAILS

APPROVED FOR DESIGN 	STATE OF ARIZONA DEPARTMENT OF TRANSPORTATION ROADWAY STANDARD DRAWINGS	REV. 5/12
APPROVED FOR DISTRIBUTION 	RAIL BANK PROTECTON AT ABUTMENTS TYPES 4, 5 & 6	DRAWING NO. C-17.15