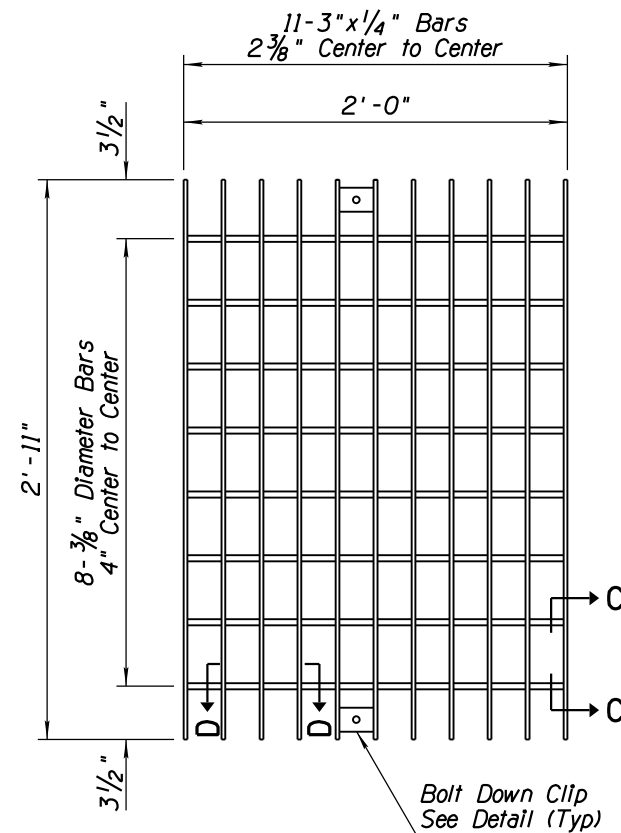
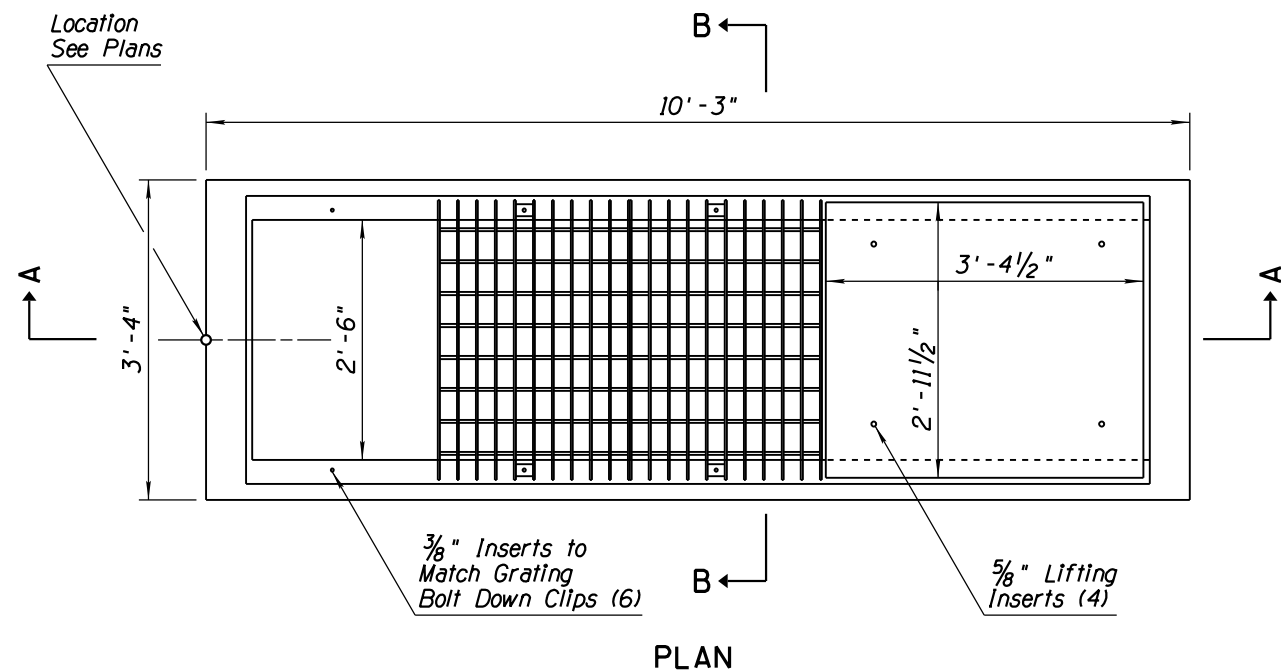


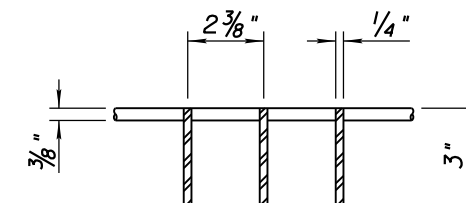
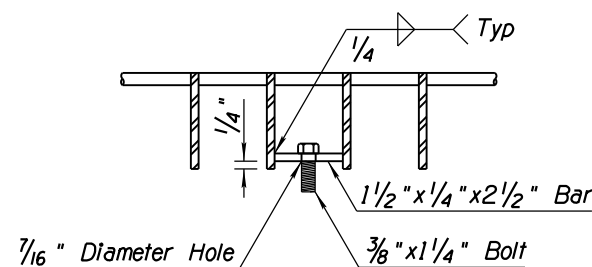
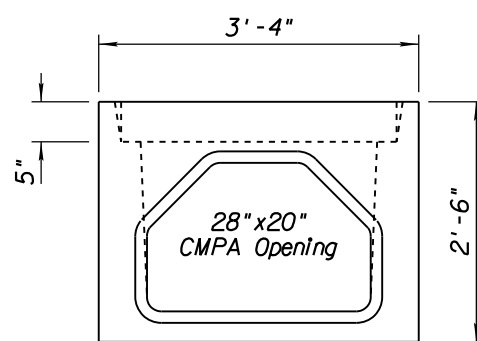
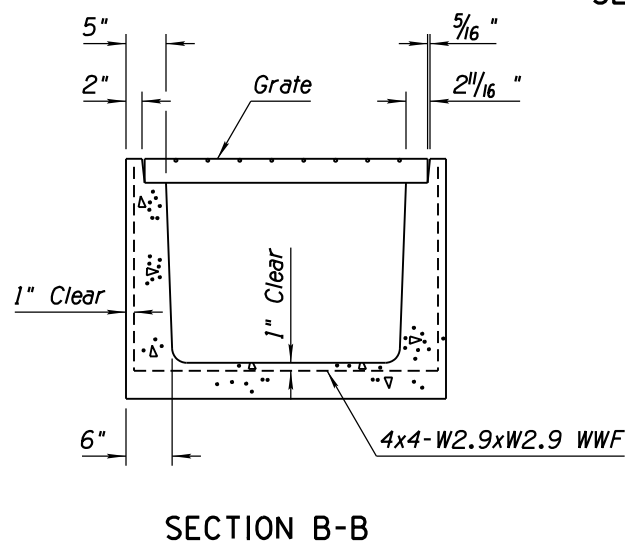
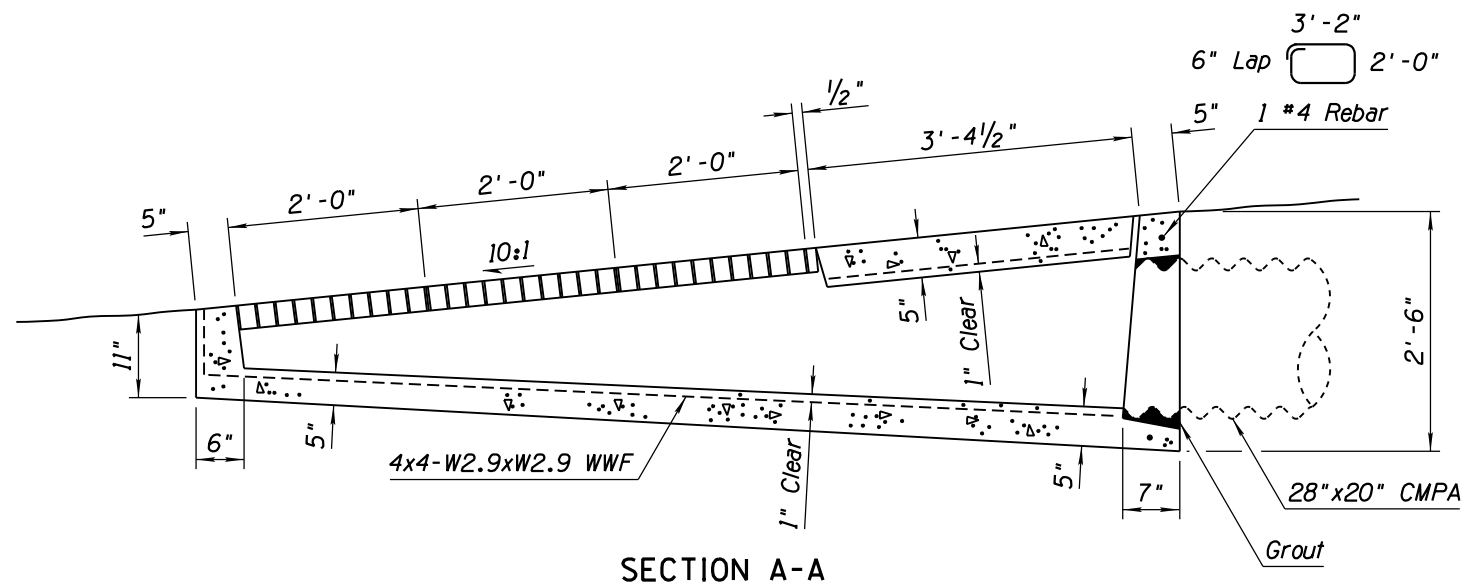
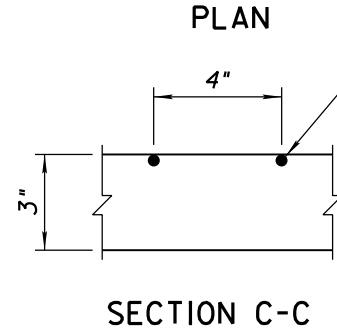
NO	DESCRIPTION OF REVISIONS	MADE BY	DATE
1			
2			
3			
4			

GENERAL NOTES

1. Concrete shall conform to the requirements for Class S Concrete. The minimum strength shall be 4000 PSI.
2. Grout shall be in accordance with the Std Specs except water content shall be such that the consistency is proper for smooth troweling.
3. All welding shall be in accordance with Std Spec 604-3.06.
4. The completed grate shall be given one shop coat of Number 1 paint.
5. Foundation soil and backfill shall be in accordance with Std Spec 203-5.



3/8" Diameter Cross Bars May Be Fillet Welded, Resistance Welded, or Electroforged to Bearing Bars



APPROVED FOR DESIGN 	STATE OF ARIZONA DEPARTMENT OF TRANSPORTATION ROADWAY STANDARD DRAWINGS	REV. 5/12
APPROVED FOR DISTRIBUTION 	CATCH BASIN MEDIAN DIKE PRECAST	DRAWING NO. C-15.90