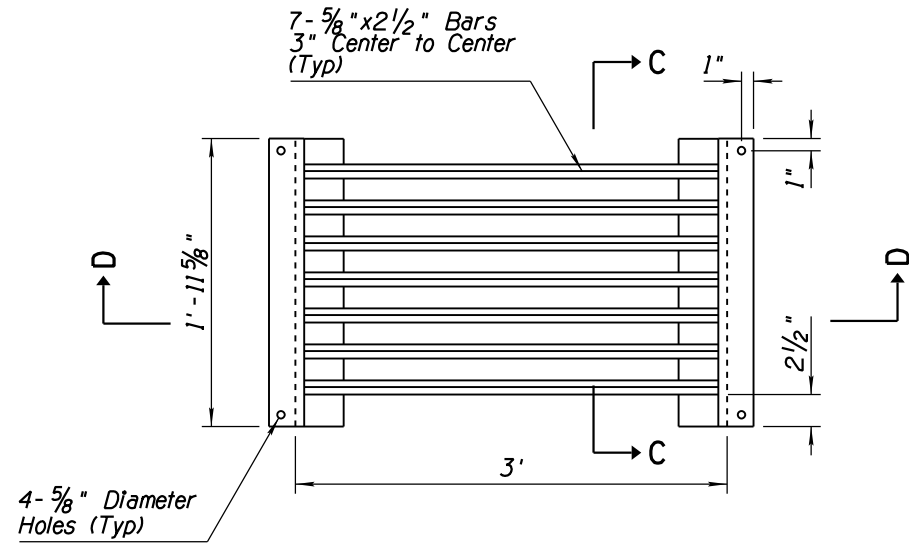
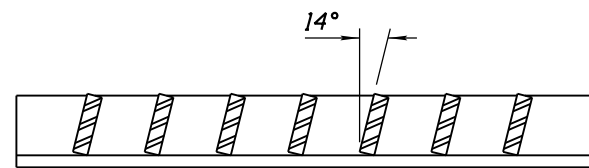


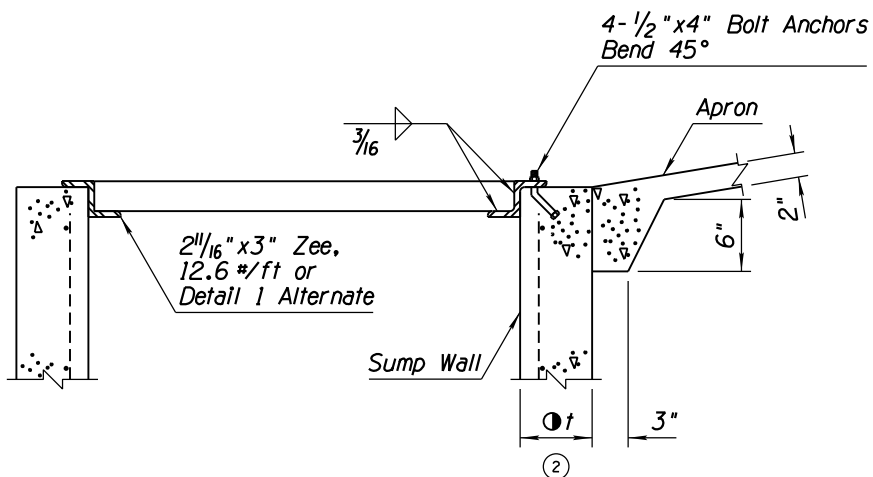
NO.	DESCRIPTION OF REVISIONS	MADE BY	DATE
1	REVISED CLEAR COVER	RLF	9/04
2	REVISED THICKNESS SPECIFICATION	RLF	9/04
3	ADDED CONCRETE REQUIREMENT	RLF	9/04
4			



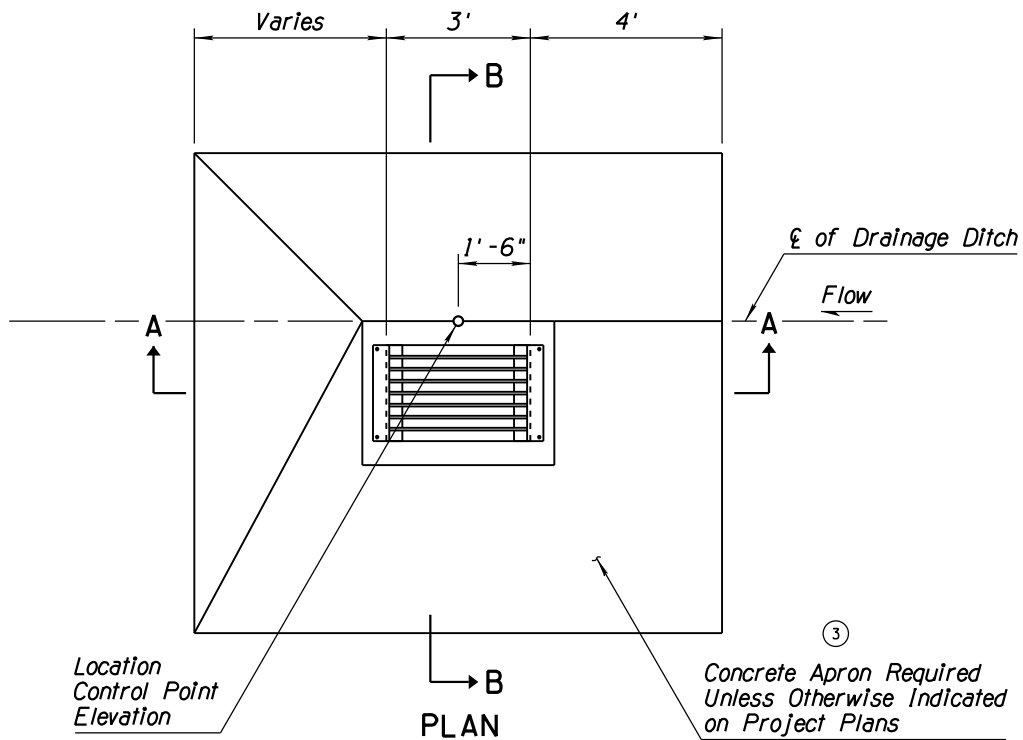
GRATE DETAIL



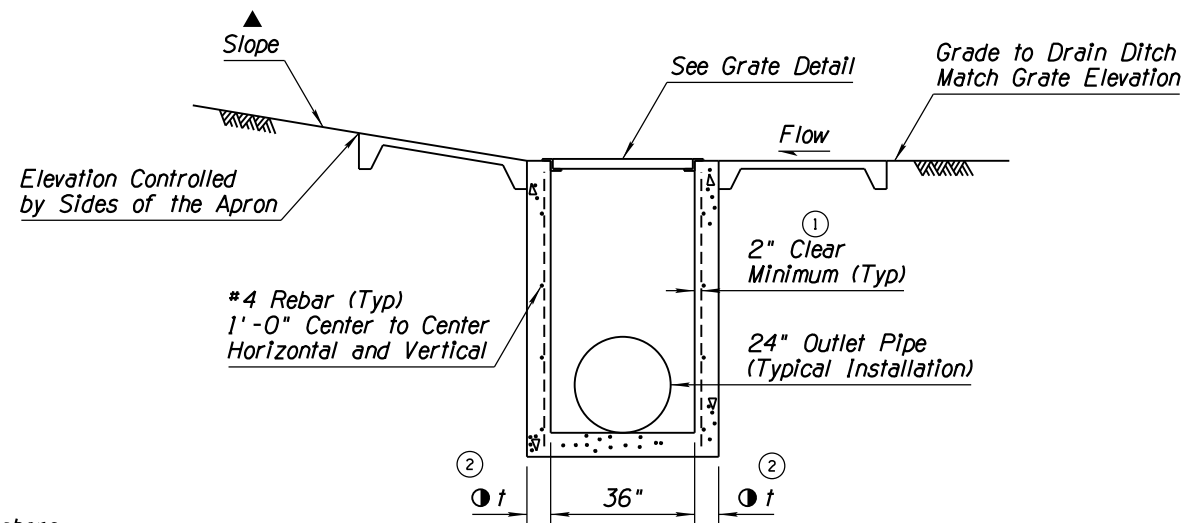
SECTION C-C



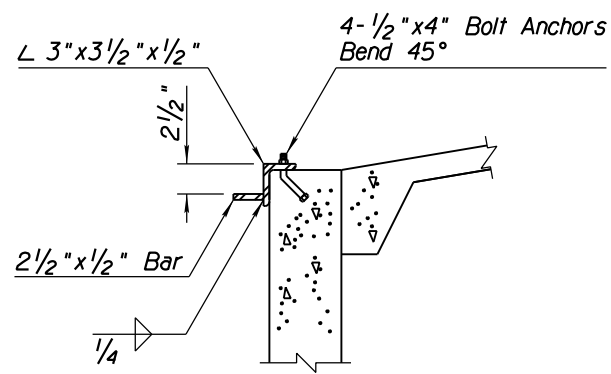
SECTION D-D



PLAN



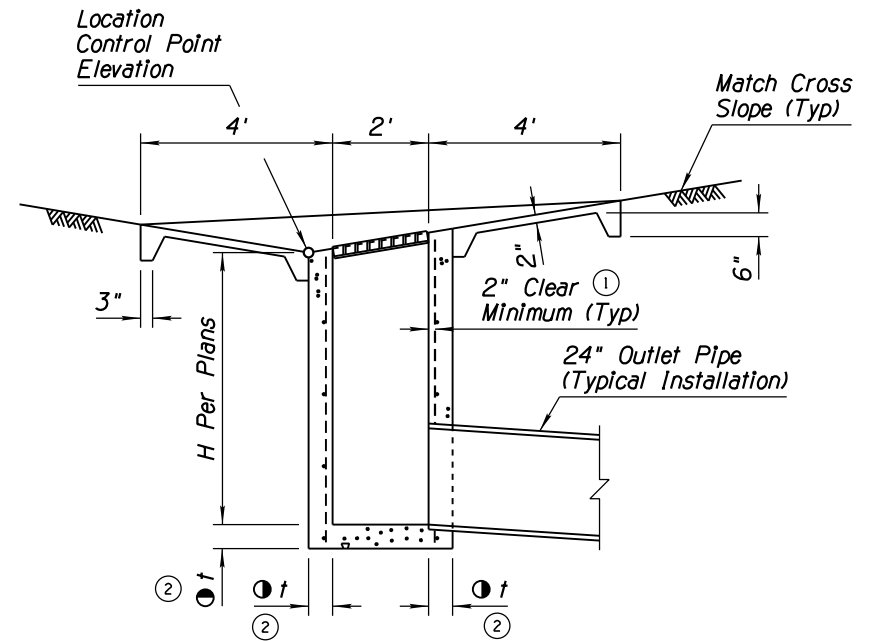
SECTION A-A



DETAIL 1

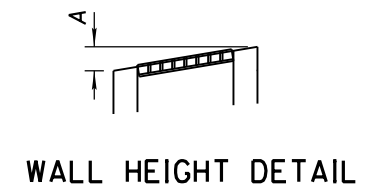
GENERAL NOTES

- All concrete shall be Class B.
 - Grate and frame shall be fabricated of structural steel in accordance with ASTM A36.
 - All welding shall be in accordance with Std Spec 604-3.06.
 - Grate assembly shall be given one shop coat of Number 1 paint.
 - ▲ Apron slopes shall match the natural flow line of the ditch. No additional depression will be allowed.
- ② $t = 6"$ when H is 8' or less
 $8"$ when H is greater than 8'



SECTION B-B

DIMENSION TABLE	
Slope	A (In)
10:1	3.6
8:1	4.5
6:1	6
4:1	9



WALL HEIGHT DETAIL

APPROVED FOR DESIGN 	STATE OF ARIZONA DEPARTMENT OF TRANSPORTATION ROADWAY STANDARD DRAWINGS	REV. 5/12
APPROVED FOR DISTRIBUTION 	CATCH BASIN SIDE SLOPE	DRAWING NO. C-15.81