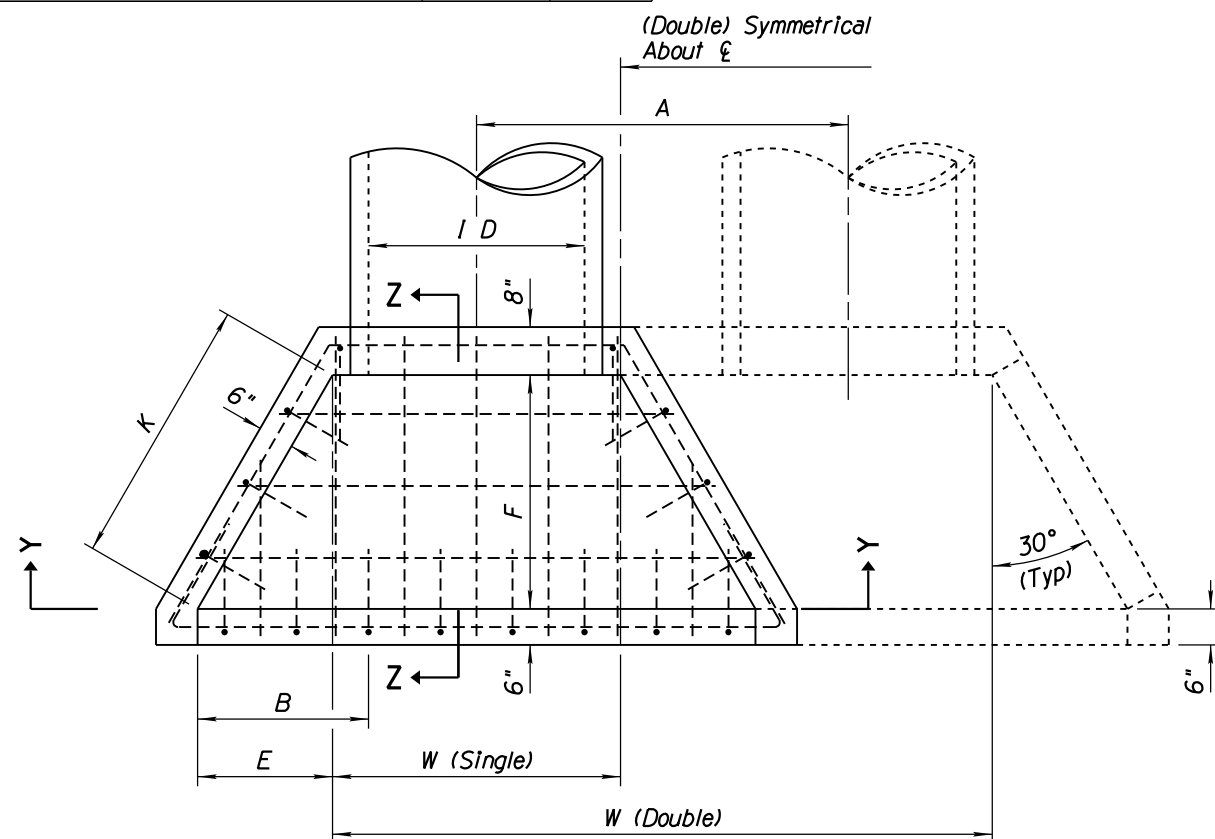


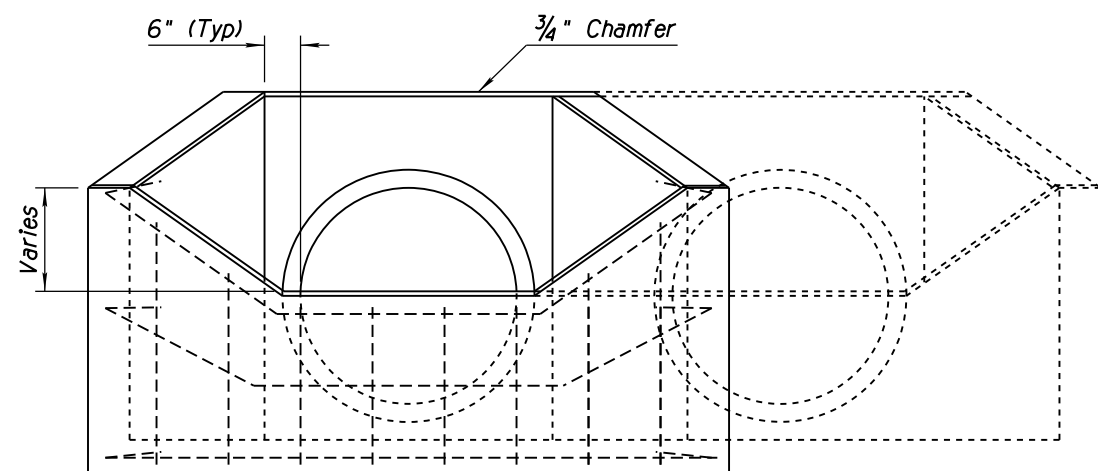
NO.	DESCRIPTION OF REVISIONS	MADE BY	DATE
1	REVISED TABLE MEASUREMENT FORMAT	RLF	9/04
2			
3			
4			

GENERAL NOTES

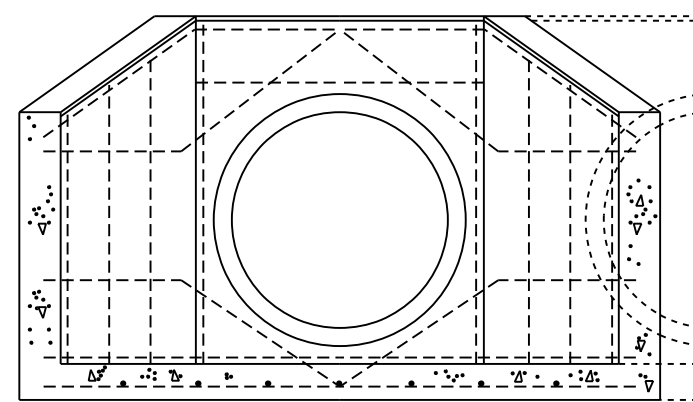
1. See also Std Dwg C-13.10.
2. High point of headwall shall not project more than 3" above slope.
3. All concrete shall be Class B.
4. All rebar shall be #4, 1'-0" center to center, with 3" minimum clear to inside of walls and floor.



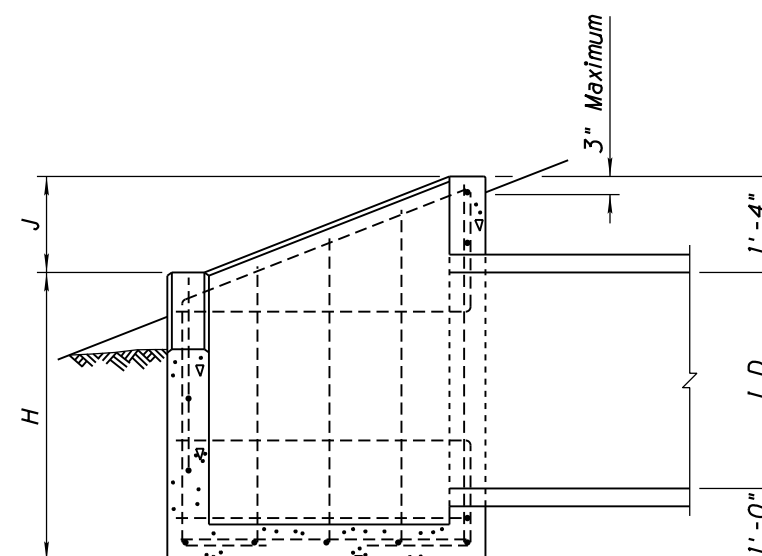
PLAN



ELEVATION



SECTION Y-Y



SECTION Z-Z

PIPE ID (In)	DIMENSIONS (Ft-In)									QUANTITIES (Based on CMP Installation)			
	W		A	B	E	F	H	J	K	Concrete (CY)		Reinforcing Steel (Lbs)	
	Single	Double								Single	Double	Single	Double
18	2 -6	5 -2	2 -8	1 -3	0-9	1 -3 5/8	3 -1	0-9	1 -6	0.7	1.1	75	105
24	3 -0	6 -6	3 -6	1 -7 1/2	1 -1 1/2	1 -11 3/8	3 -5	0-11	2 -3	1.0	1.6	90	135
30	3 -6	7 -10	4 -4	2 -0	1 -6	2 -7 1/4	3 -9	1 -1	3 -0	1.5	2.3	110	165
36	4 -0	9 -2	5 -2	2 -4 1/2	1 -10 1/2	3 -3	4 -0	1 -4	3 -9	2.0	3.0	145	215
42	4 -6	10 -6	6 -0	2 -9	2 -3	3 -10 3/4	4 -4	1 -6	4 -6	2.5	3.8	190	280

APPROVED FOR DESIGN 	STATE OF ARIZONA DEPARTMENT OF TRANSPORTATION ROADWAY STANDARD DRAWINGS	REV. 5/12
APPROVED FOR DISTRIBUTION 	CATCH BASIN DROP INLET	DRAWING NO. C-15.75