

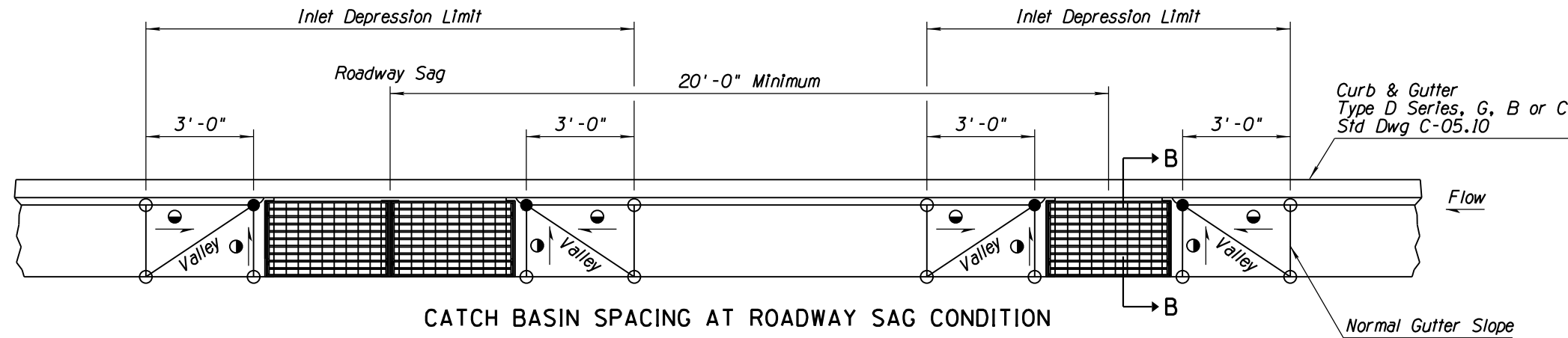
NO	DESCRIPTION OF REVISIONS	MADE BY	DATE
1	REISSUED STANDARD DRAWING	RLF	9/04
2			
3			
4			

GENERAL NOTES

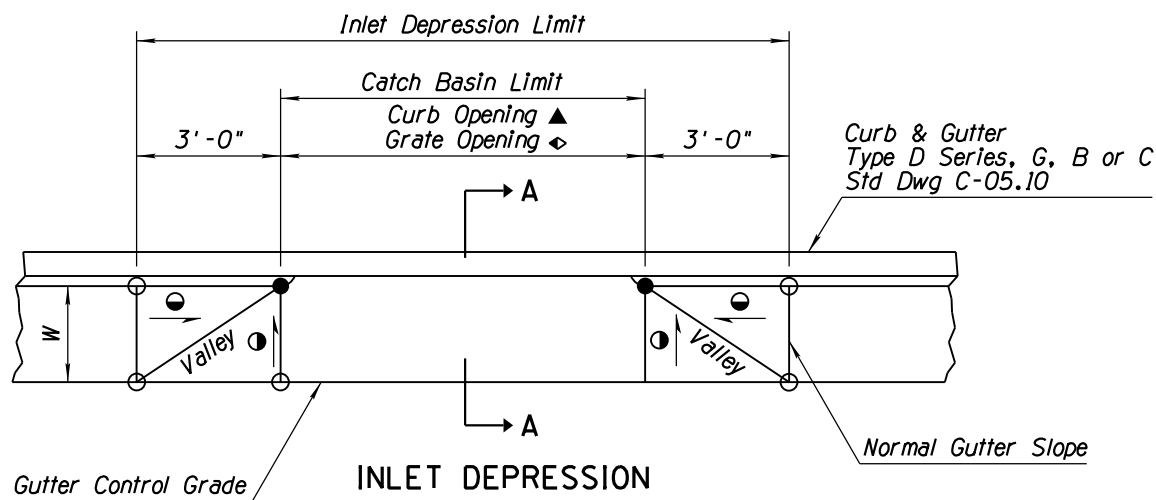
1. No inlet depression shall extend into a traffic lane.
2. Maximum combined inlet and gutter depression is 3". See Section A-A.
3. Maximum distance along curb between catch basins where full gutter depression is used is 10'.
4. See Std Dwg C-15.80 for aprons used with Std Dwg C-15.80 Catch Basin.

LEGEND

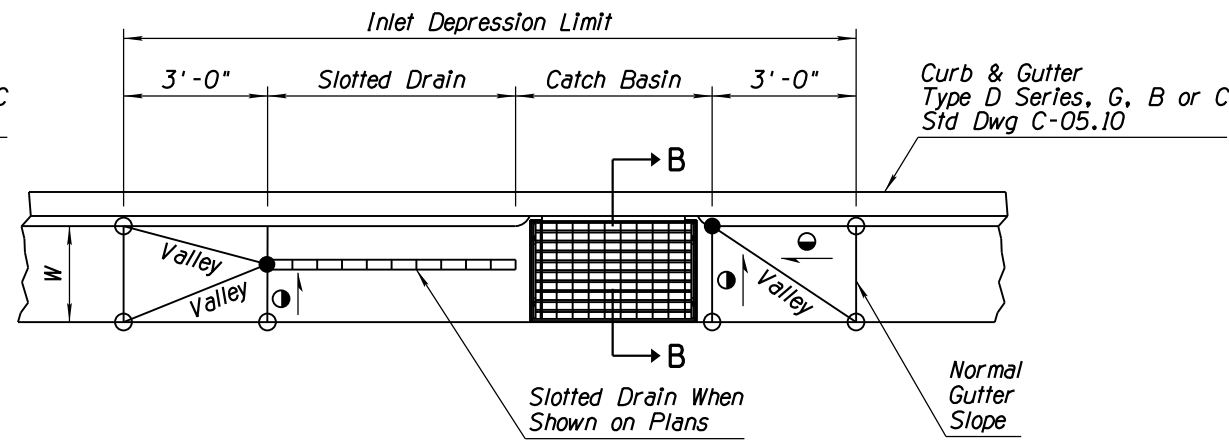
- - Normal pavement or gutter flow line elevation.
- - Depressed elevation.
- ◐ - Straight grade with downward slope.
- W - Normal gutter width per Std Dwg C-05.10.
- ▲ - For Types 1, 3, & 5 Catch Basin.
- ◊ - For Type 4 Catch Basin & Std Dwg C-15.91.



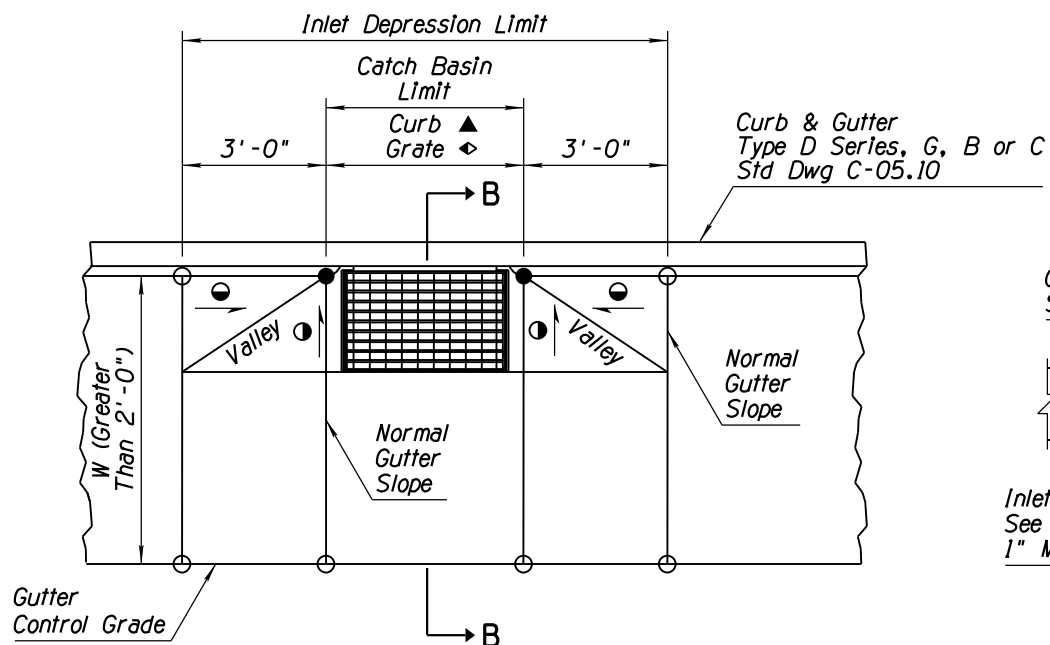
CATCH BASIN SPACING AT ROADWAY SAG CONDITION



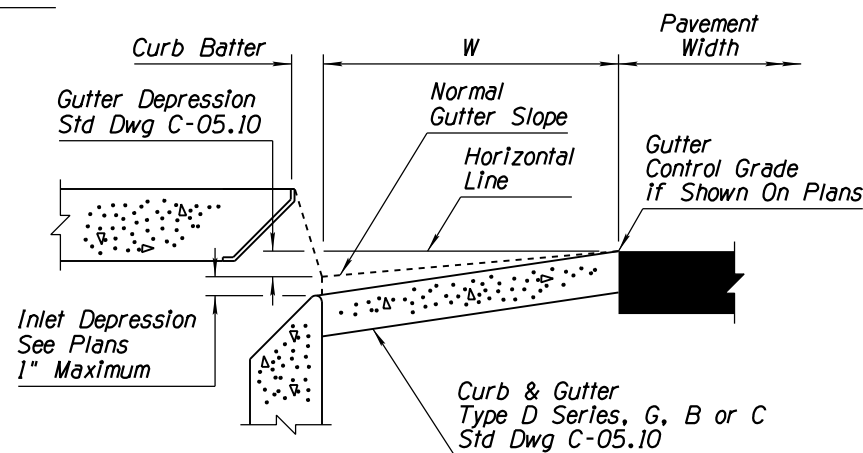
INLET DEPRESSION



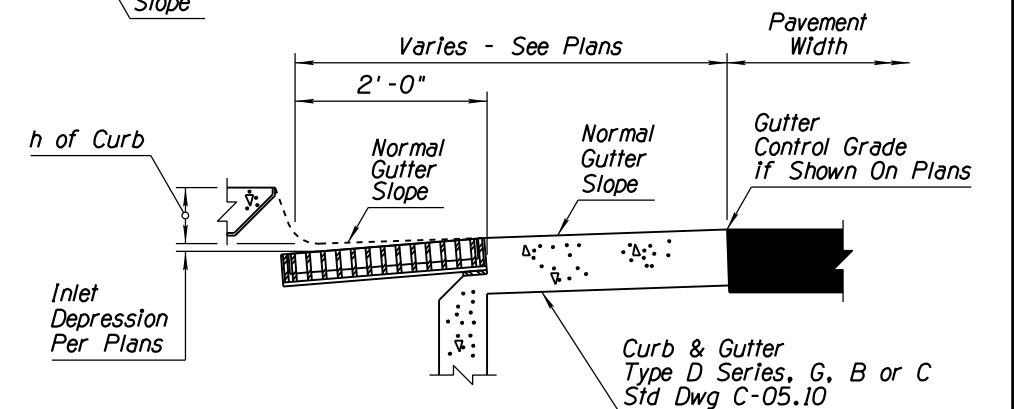
INLET DEPRESSION
CATCH BASIN WITH SLOTTED DRAIN



INLET DEPRESSION
CATCH BASIN WITH WIDE GUTTER



SECTION A-A
(Type D Curb & Gutter Shown)



SECTION B-B
(Type D Curb & Gutter Shown)

APPROVED FOR DESIGN 	STATE OF ARIZONA DEPARTMENT OF TRANSPORTATION ROADWAY STANDARD DRAWINGS	REV. 5/12
APPROVED FOR DISTRIBUTION 	CATCH BASIN MISCELLANEOUS DETAILS	DRAWING NO. C-15.70 Sheet 1 of 2