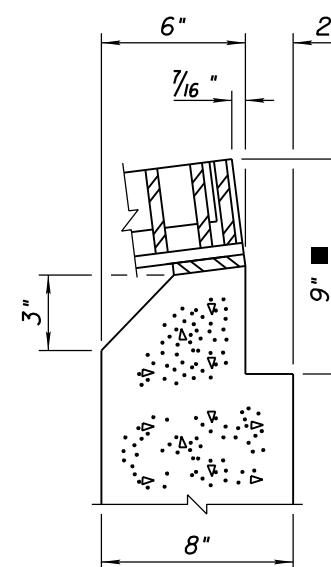
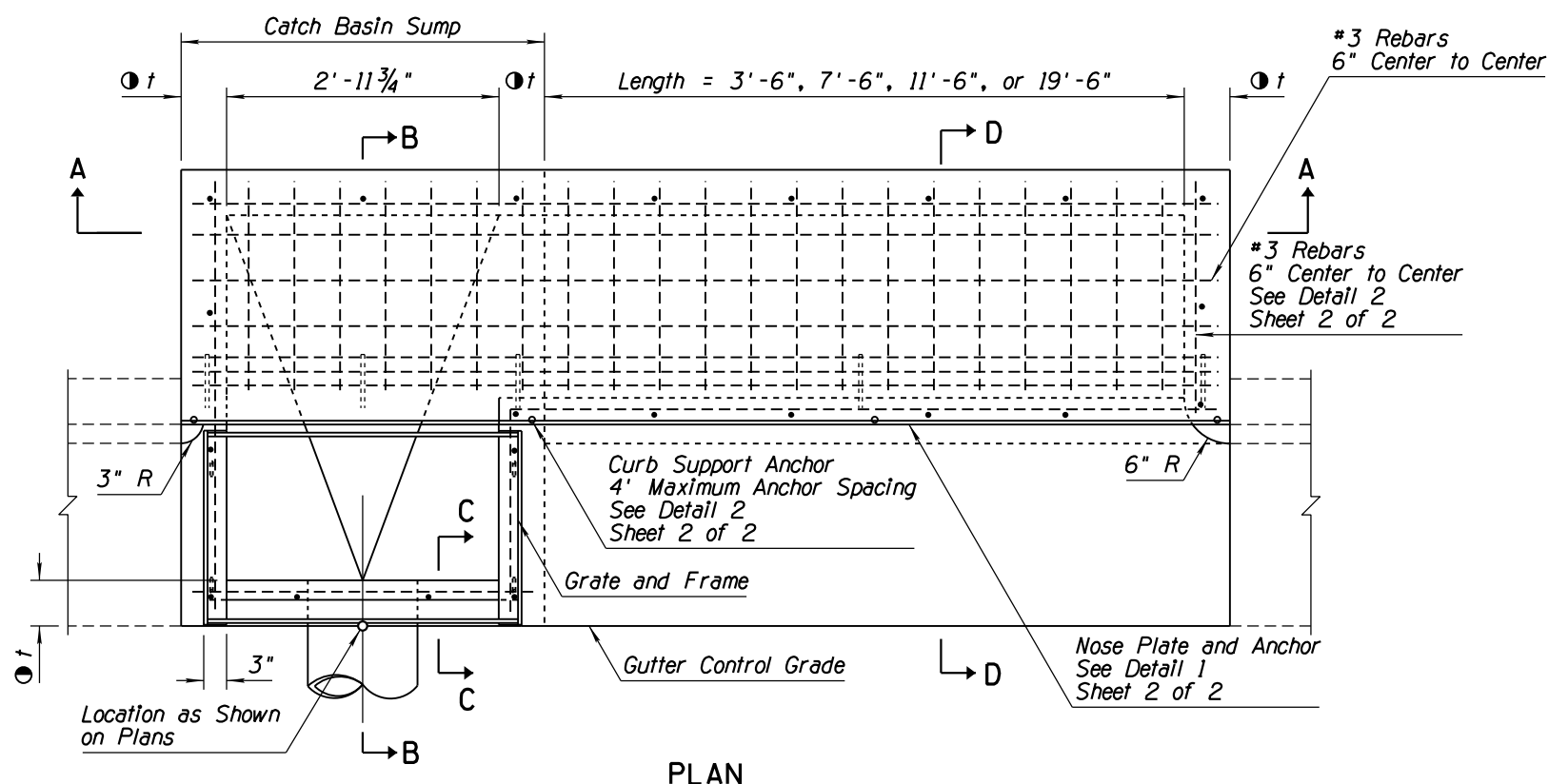


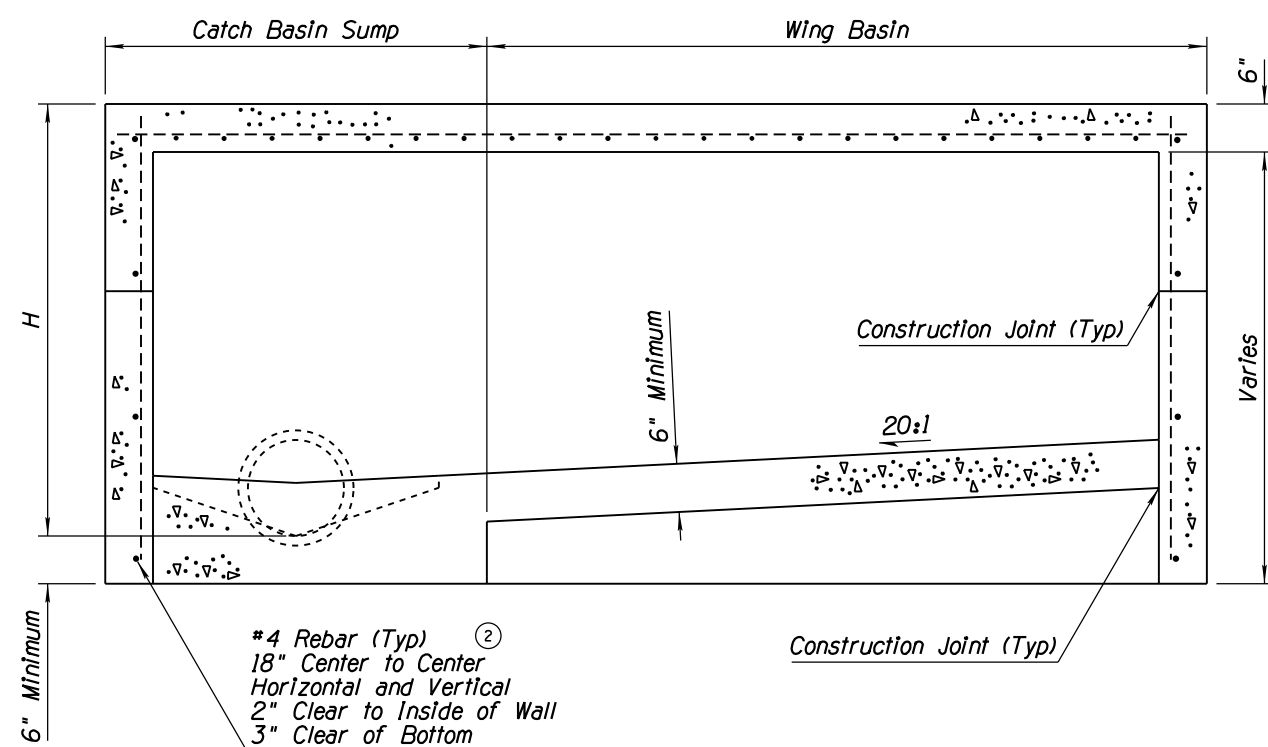
NO	DESCRIPTION OF REVISIONS	MADE BY	DATE
1	DELETED GENERAL NOTE 9, RENUMBERED ALL AFTER 8	RLF	9/04
2	ADDED CALLOUT	RLF	9/04
3			
4			

GENERAL NOTES

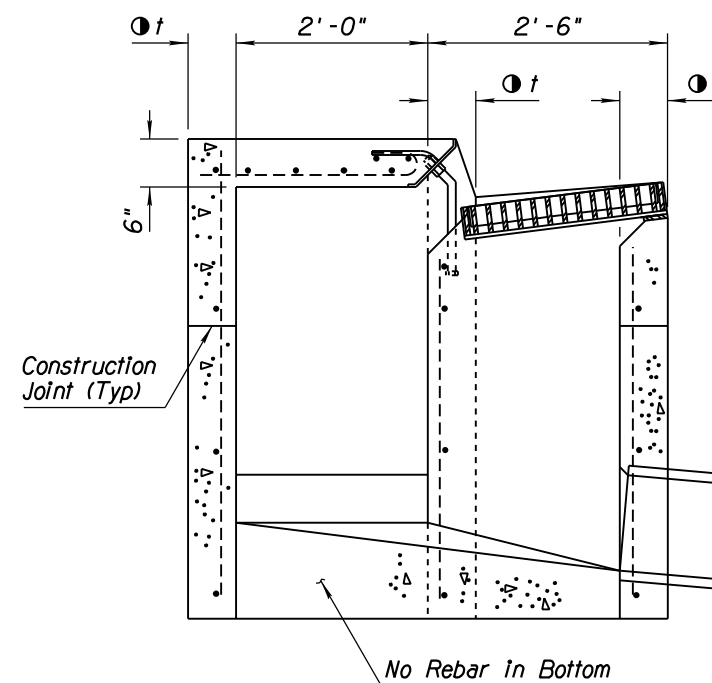
- Catch basin can be used on grade or at roadway sag.
- Catch basin has three configurations:
Sump only-sump portion of catch basin;
Single wing (Illustrated)-sump with wing basin upstream; and
Double wing-sump with symmetrical wing basins each side.
- Pipes can be placed in any wall except wall adjacent to a wing basin.
- Floor shall be a wood troweled finish. Slope of the sump portion of the catch basin along the axis of the pipe shall be 4:1.
- Any specified inlet depression shall be warped to opening according to Std Dwg C-15.70.
- All rebar shall be ASTM A36.
- Nose plate shall be given one shop coat of Number 1 paint.
- All concrete shall be Class B.
- ① Curb opening area (sq ft) per inch of curb "h" + Inlet depression = curb opening length (ft) x 0.0833.
- All welding shall be in accordance with Std Spec 604-3.06.
- See Std Dwg C-15.50 for grate and frame details and opening areas.
- Construction joints and drains shall be placed to meet field conditions. See Std Dwg C-15.70.
- Silicone sealant shall be placed between the grate frame and PCCP, recessed 1/4" from the pavement surface.
- ② t = 6" when H is 8' or less.
8" when H is greater than 8'.
See Section C-C.
- = 9" when pavement is AC.
Match pavement thickness when pavement is PCCP.



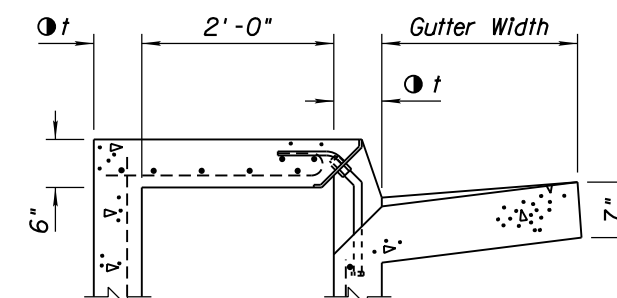
SECTION C-C
USE THIS SECTION
WHEN t=8"



SECTION A-A
USE THIS SECTION WHEN H=5' OR LESS



SECTION B-B



SECTION D-D

APPROVED FOR DESIGN 	STATE OF ARIZONA DEPARTMENT OF TRANSPORTATION ROADWAY STANDARD DRAWINGS	REV. 5/12
APPROVED FOR DISTRIBUTION 	CATCH BASIN TYPE 5	DRAWING NO. C-15.40 Sheet 1 of 2