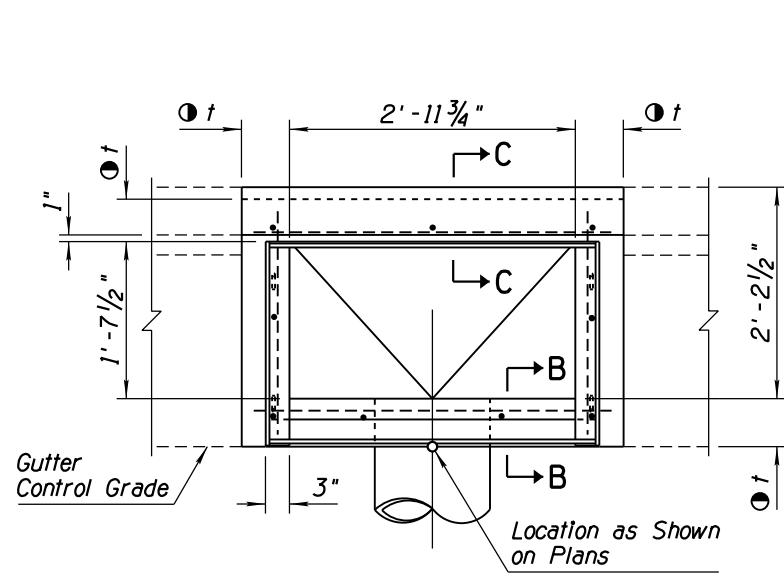
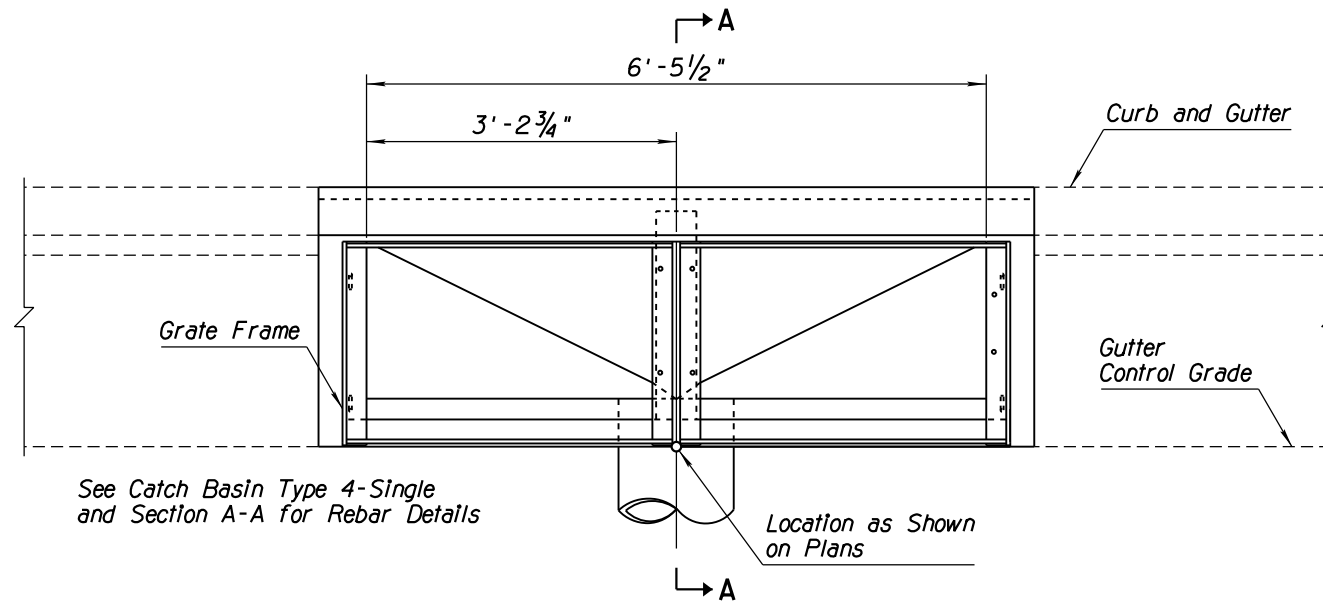


NO.	DESCRIPTION OF REVISIONS	MADE BY	DATE
1	REVISED STANDARD FOR NEW FRAME	PNB	5/97
2			
3			
4			

Dimensions are Common to Catch Basin Type 4-Single Except as Shown



PLAN - CATCH BASIN TYPE 4 - SINGLE



PLAN - CATCH BASIN TYPE 4 - DOUBLE

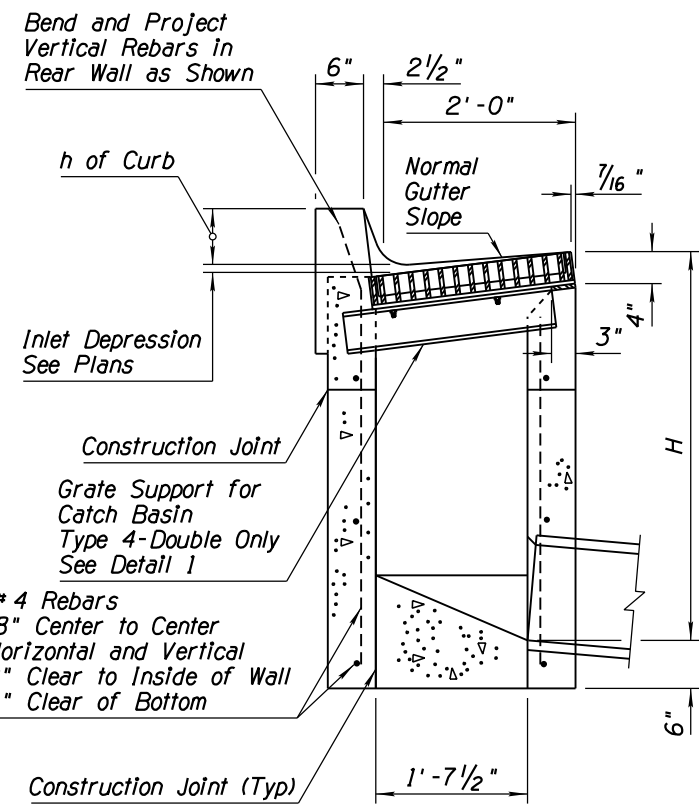
See Catch Basin Type 4-Single and Section A-A for Rebar Details

Location as Shown on Plans

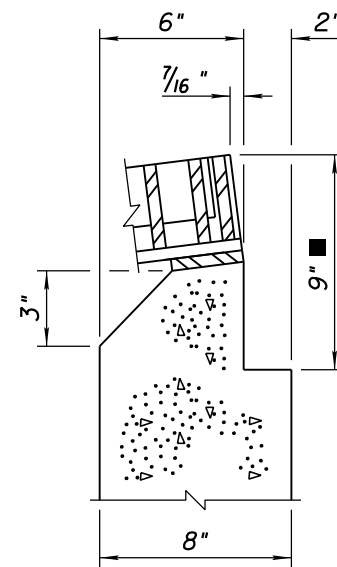
GENERAL NOTES

1. Catch basin can be used on grade or at roadway sag.
2. Pipes can be placed in any wall.
3. Floor shall be a wood troweled finish with a minimum 4:1 slope along the axis of the pipe toward the pipe.
4. Curb over catch basin shall not be constructed until catch basin concrete has set for a minimum of 24 hours.
5. Catch basin can be used with curb and gutter (as shown) or without.
6. See Std Dwg C-15.50 for grate and frame details and opening areas.
7. Any specified inlet depression shall be warped to opening according to Std Dwg C-15.70.
8. All rebar shall be ASTM A36.
9. Grate, frame and beam shall be given one shop coat of Number 1 paint.
10. All concrete shall be Class B.
11. Construction joints and drains shall be placed to meet field conditions. See Std Dwg C-15.70.
12. Silicone sealant shall be placed between the grate frame and PCCP, recessed 1/4" from the pavement surface.
13. See Detail 2 for catch basin with wide gutter.
14. $t = 6"$ when H is 8' or less.
8" when H is greater than 8'.
See Section B-B.

■ 9" when pavement is AC. Match pavement thickness when pavement is PCCP.

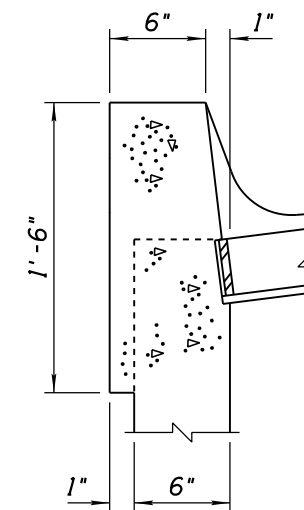


SECTION A-A

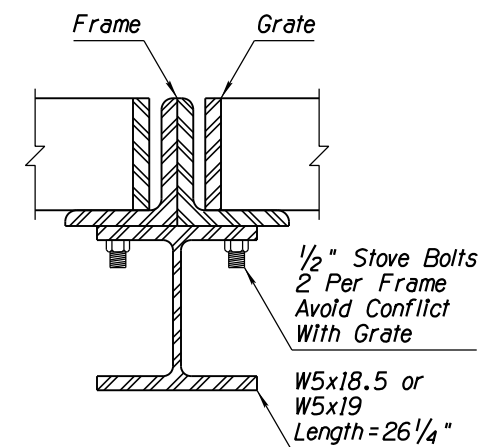


USE THIS SECTION WHEN t=8"

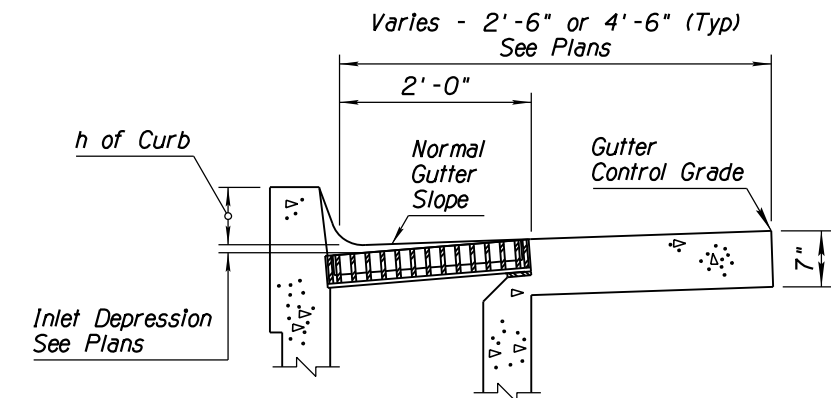
SECTION B-B



SECTION C-C



DETAIL 1



DETAIL FOR WIDE GUTTER (SEE STD DWG C-05.10)

APPROVED FOR DESIGN 	STATE OF ARIZONA DEPARTMENT OF TRANSPORTATION ROADWAY STANDARD DRAWINGS	REV. 5/12
APPROVED FOR DISTRIBUTION 	① CATCH BASIN TYPE 4	DRAWING NO. C-15.30