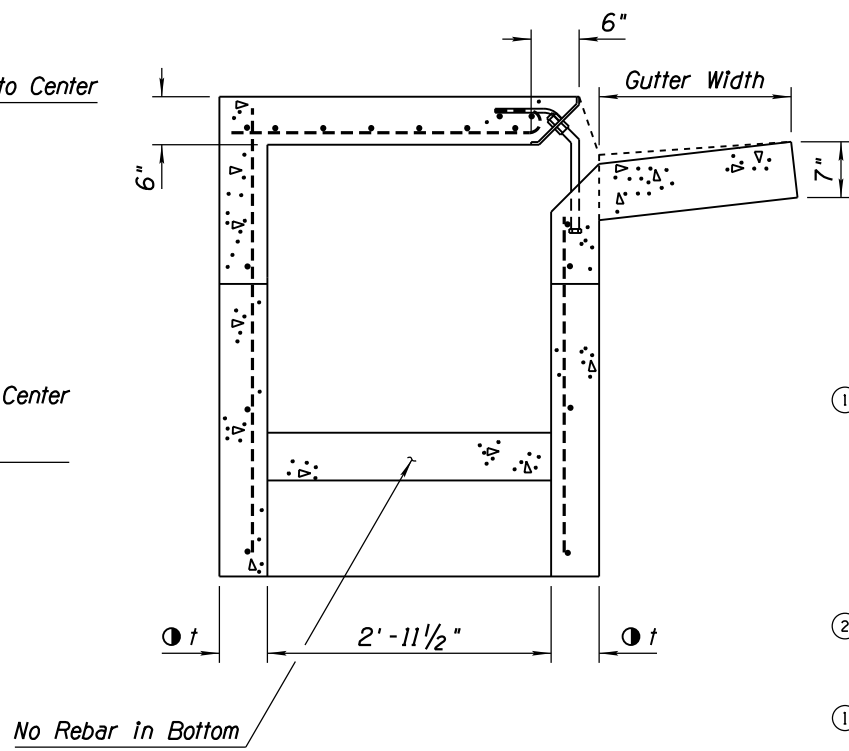
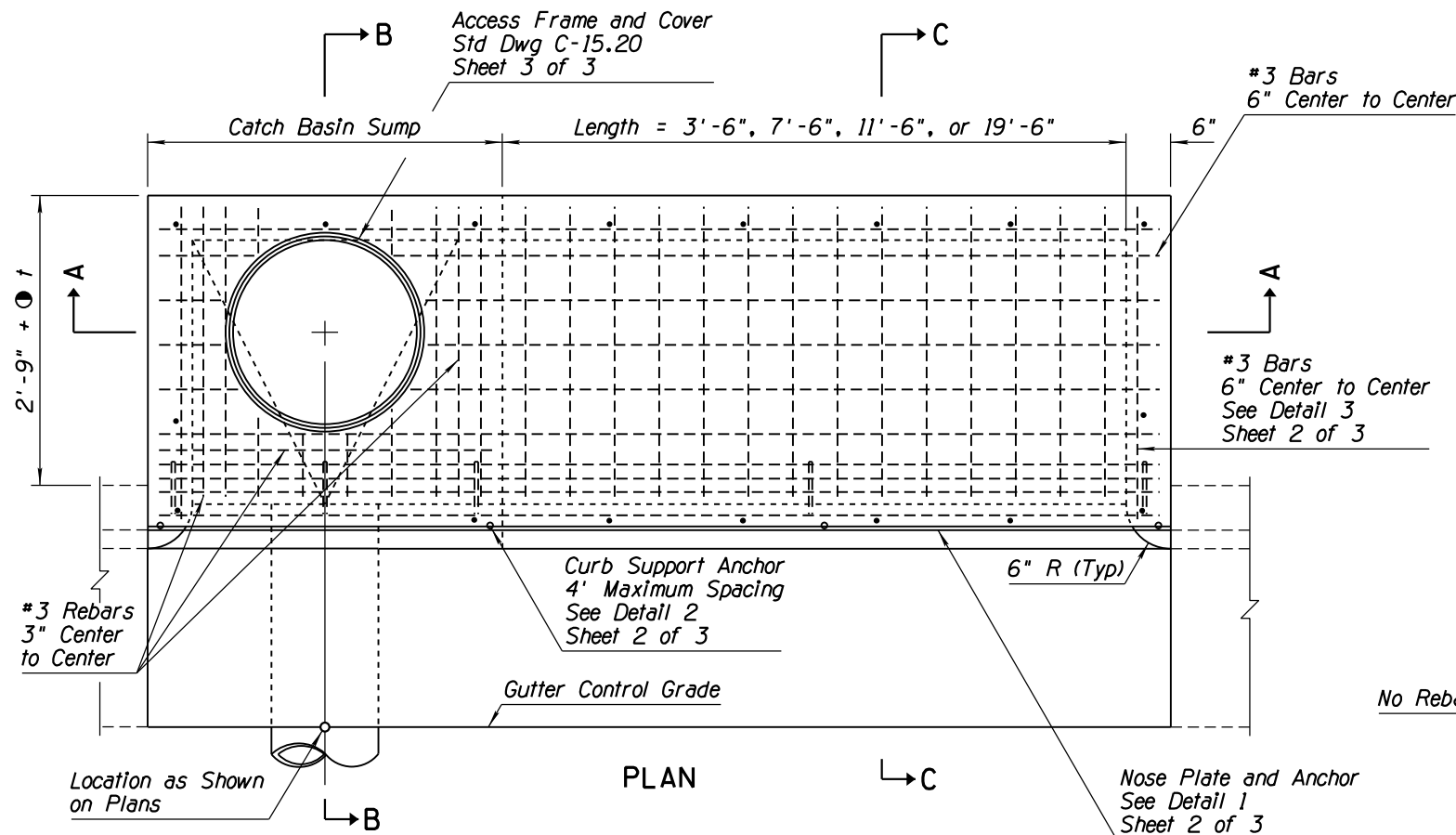
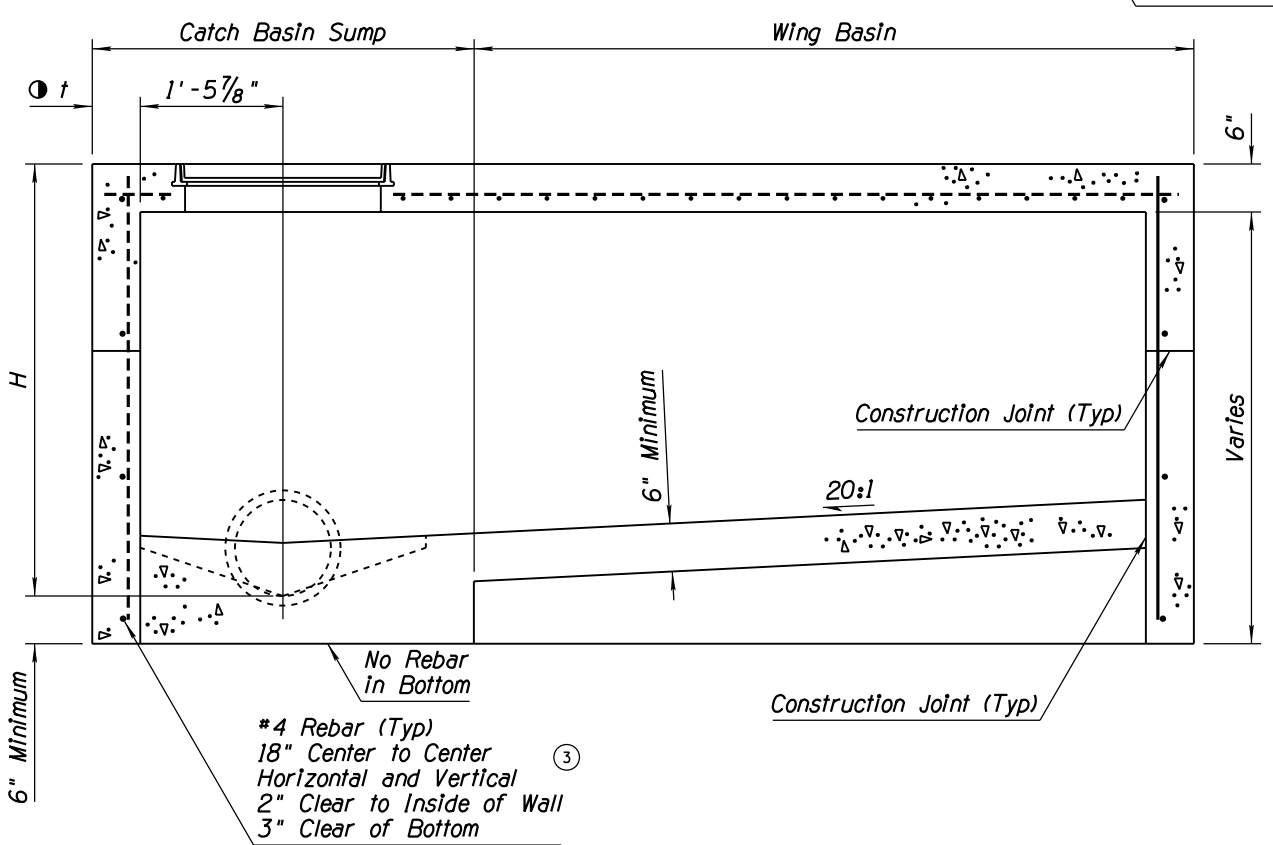


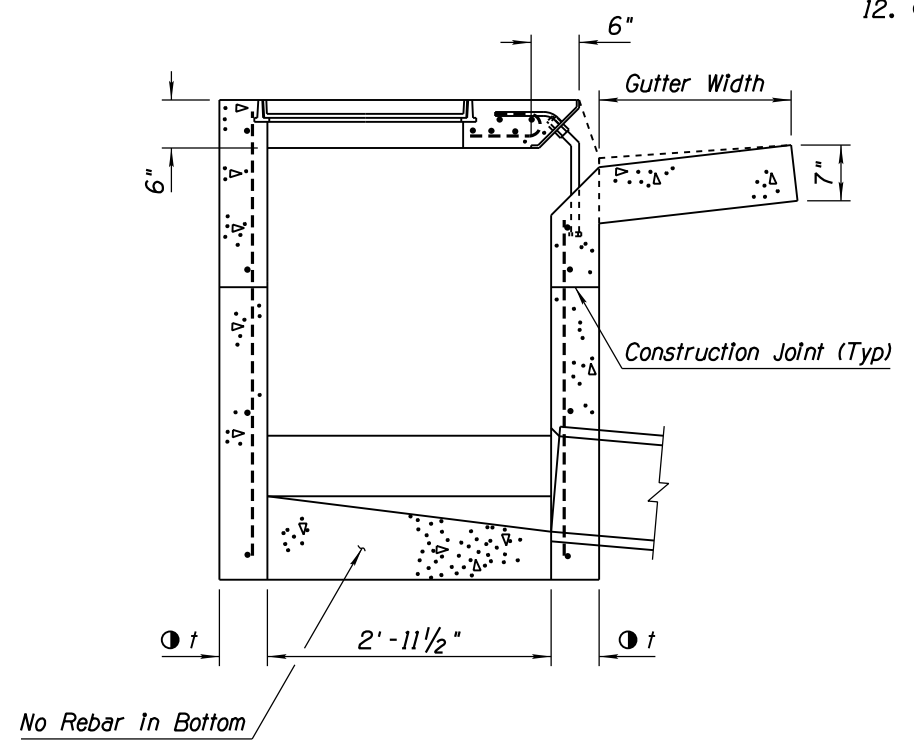
NO	DESCRIPTION OF REVISIONS	MADE BY	DATE
1	REVISED NOTES 5, 10 & 11	RLF	9/04
2	DELETED GENERAL NOTE 9	RLF	9/04
3	ADDED CALLOUT	RLF	9/04
4	REVISED SHEET NUMBER REFERENCE	RLF	4/06



SECTION C-C



SECTION A-A
USE THIS SECTION WHEN H=5' OR LESS



SECTION B-B

GENERAL NOTES

- Catch basin can be used on grade or at roadway sag.
- Catch basin has three configurations:
 Sump Only-Sump portion of catch basin (See Detail 4, Sheet 2 of 3).
 Single Wing (Illustrated)-Sump with wing basin upstream.
 Double Wing-Sump with symmetrical wing basins each side.
- Pipes can be placed in any wall except wall adjacent to wing basin.
- Floor shall be a wood troweled finish. Slope of the sump portion of the catch basin along the axis of the pipe shall be 4:1.
- Any specified inlet depression shall be warped to opening according to Std Dwg C-15.70.
- All rebar shall be ASTM A36.
- Nose plate, access frame and cover shall be given one shop coat of Number 1 paint.
- All concrete shall be Class B.
- Curb opening area (sq ft) per inch of curb "h" + gutter depression = curb opening length (ft) x 0.0833.
- All welding shall be in accordance with Std Spec 604-3.06.
- Construction joints and drains shall be placed to meet field conditions. See Std Dwg C-15.70.
- t = 6" when H is 8' or less.
8" when H is greater than 8'.

APPROVED FOR DESIGN	STATE OF ARIZONA DEPARTMENT OF TRANSPORTATION ROADWAY STANDARD DRAWINGS	REV. 5/12
APPROVED FOR DISTRIBUTION	CATCH BASIN TYPE 3	DRAWING NO. C-15.20 Sheet 1 of 3