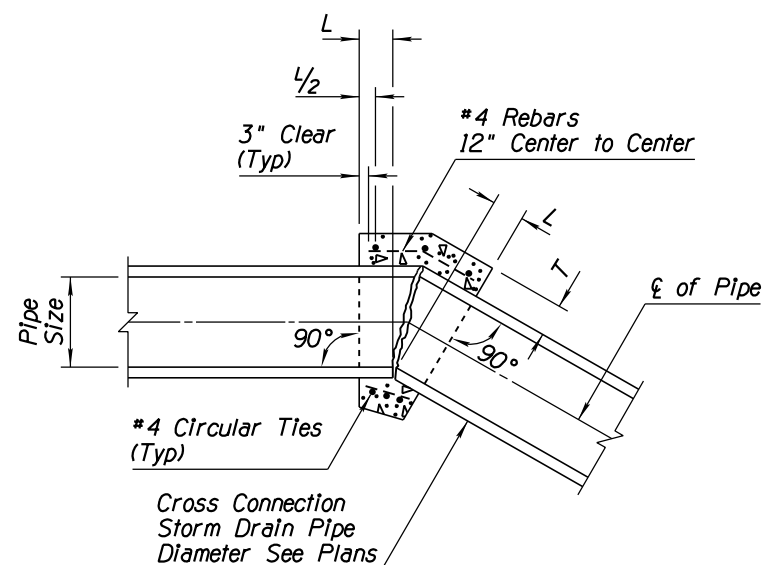
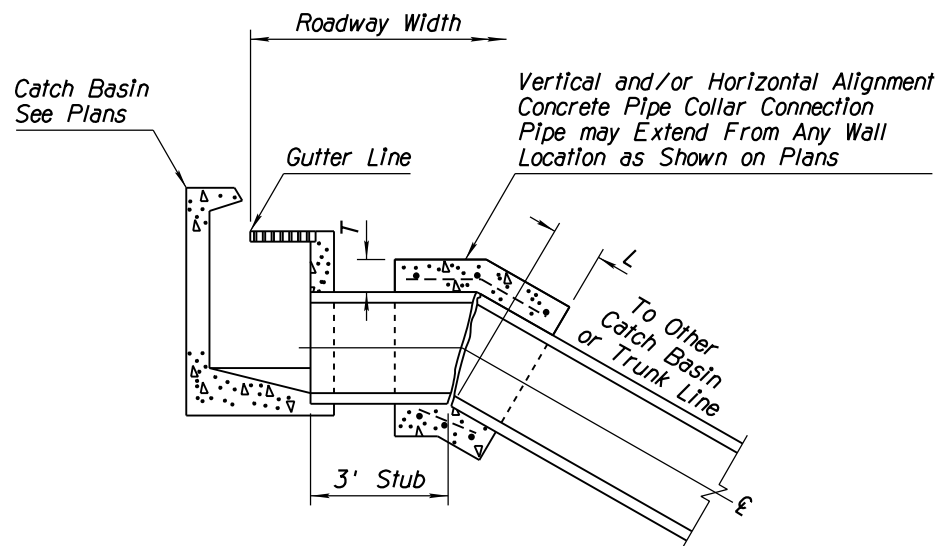


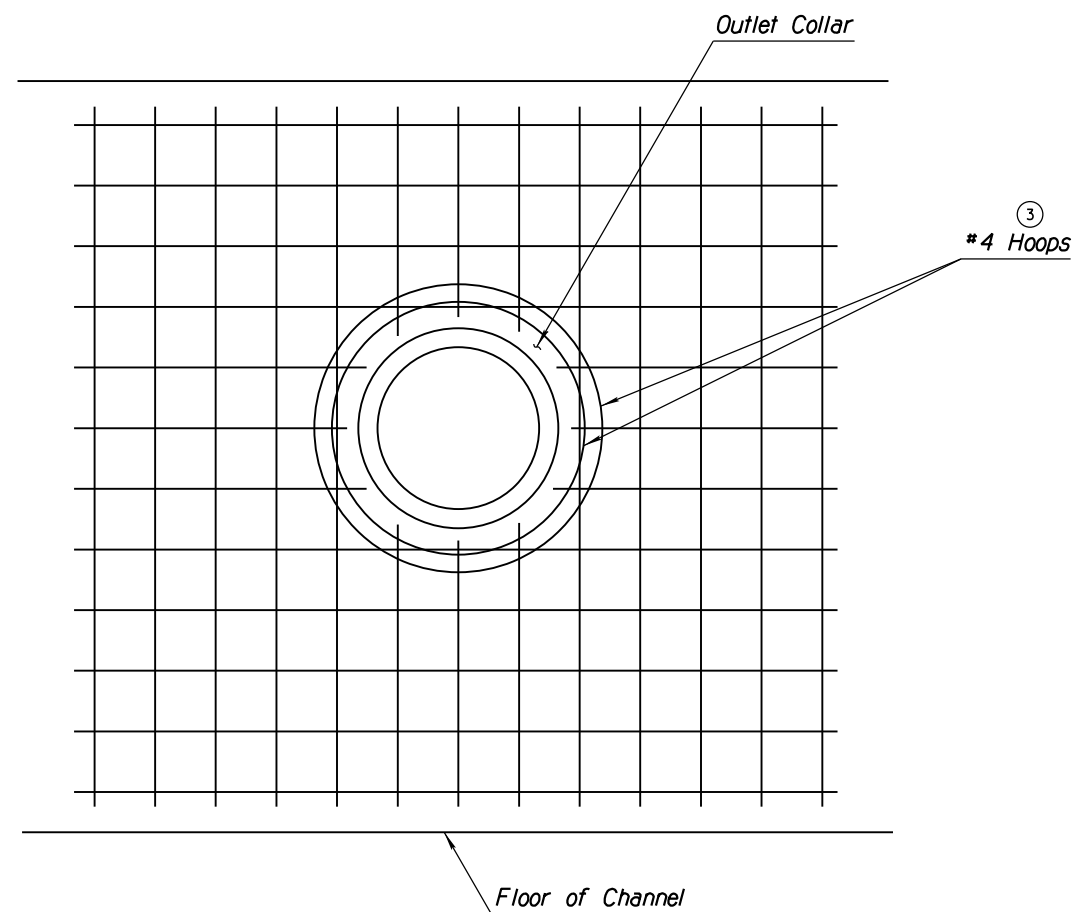
NO	DESCRIPTION OF REVISIONS	MADE BY	DATE
1	MODIFIED TABLE VALUES	RLF	9/04
2	MODIFIED GENERAL NOTE 2	RLF	9/04
3	ADDED CALLOUT	RLF	9/04
4			



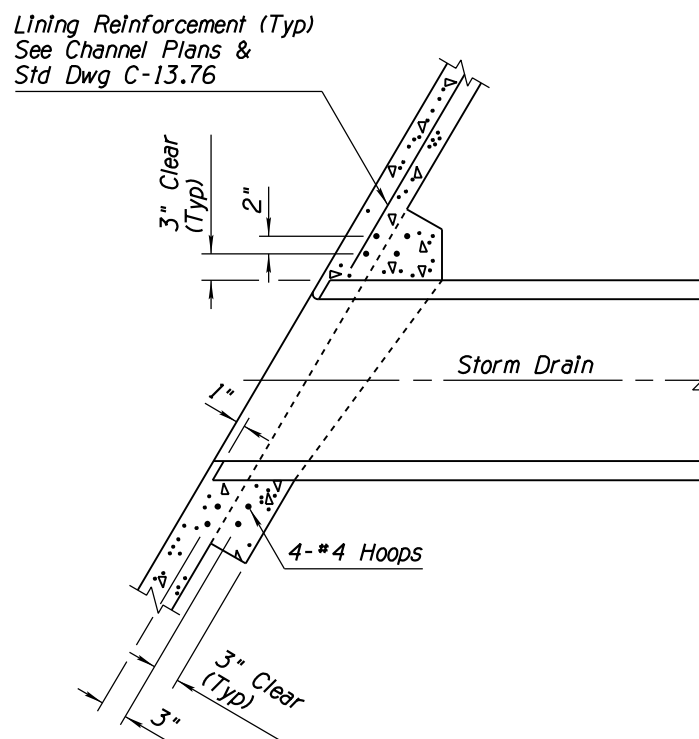
CONCRETE PIPE COLLAR



TYPICAL LATERAL CONNECTIONS TO CATCH BASINS WITH CONCRETE COLLARS



OUTLET COLLAR DETAIL



GENERAL NOTES

1. All concrete shall be Class B.
2. All rebar shall conform to Std Spec 1003-1.2.
3. All rebar shall have 3" minimum clear cover.
4. A concrete collar shall be required where pipes of different diameters or materials are joined or where the design change in alignment or grade exceeds that allowed for a standard joint.
5. When pipes of different diameters are joined with a concrete collar, "L" & "T" shall be those of the larger diameter.
6. The diameter of the circular ties shall be the outside diameter of pipe + T.
7. Pipe ends to be trimmed such that the maximum distance between pipes at any point is 2".

①

PIPE COLLAR TABLE			
Pipe Size (In)	L (Ft-In)	T (In)	# 4 Ties
12	1-0	4	3
18	1-0	5	3
24	1-0	6	3
30	1-6	8	3
36	1-6	8	3
42	1-9	10	4
48	1-9	10	4
52	1-9	10	4
60	1-9	11	4
66	2-0	11	5
72	2-0	14	5
78	2-0	14	5
84	2-3	16	5
96	2-3	16	5

APPROVED FOR DESIGN 	STATE OF ARIZONA DEPARTMENT OF TRANSPORTATION ROADWAY STANDARD DRAWINGS	REV. 5/12
APPROVED FOR DISTRIBUTION 	PIPE COLLAR DETAILS	DRAWING NO. C-13.80