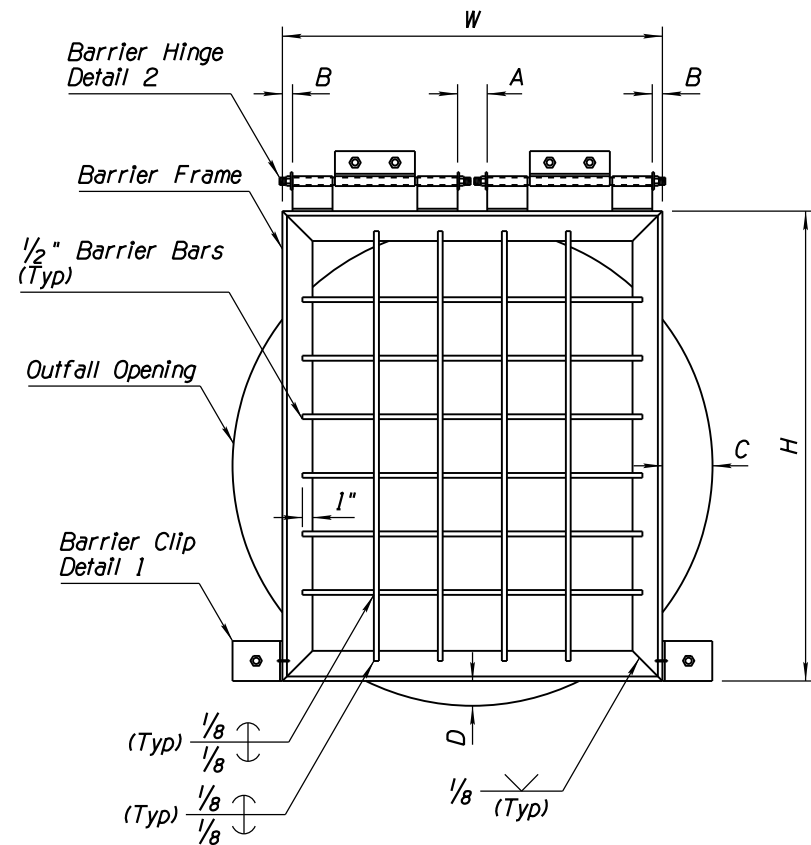
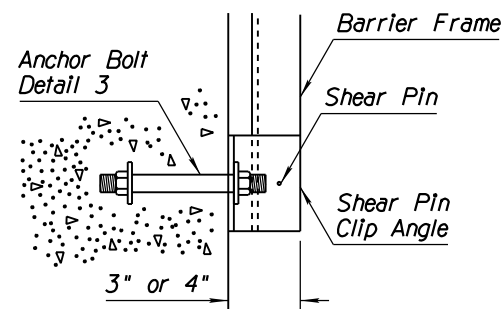


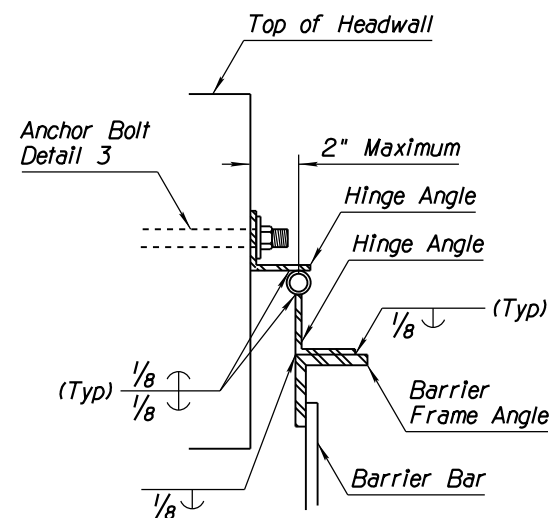
NO	DESCRIPTION OF REVISIONS	MADE BY	DATE
1	RENAMED STANDARD	RLF	9/04
2	MODIFIED TABLE MEASUREMENT FORMAT	RLF	9/04
3	MODIFIED STEEL QUANTITIES	RLF	9/04
4			



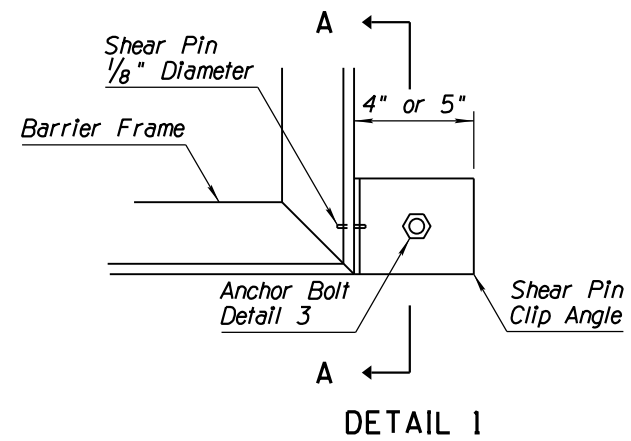
PIPE ACCESS BARRIER FRONT ELEVATION



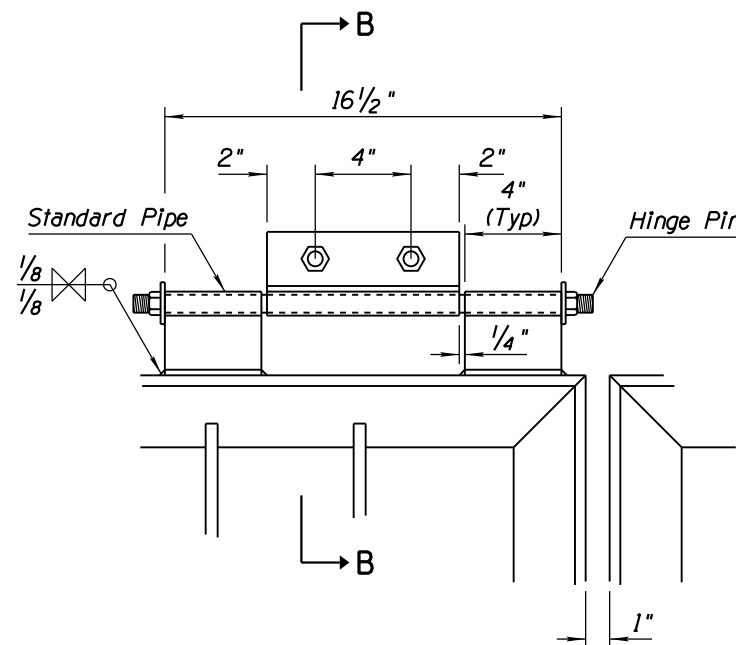
SECTION A-A



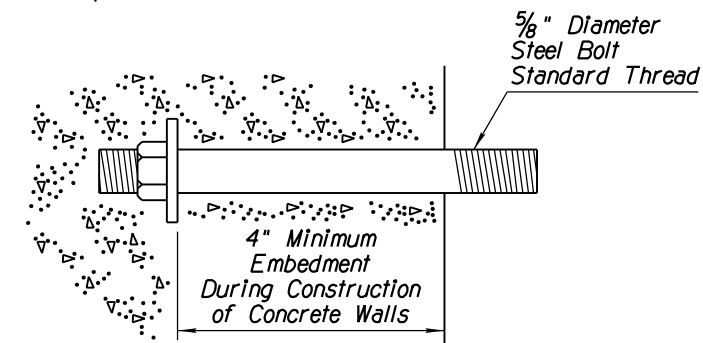
SECTION B-B



DETAIL 1



DETAIL 2



DETAIL 3

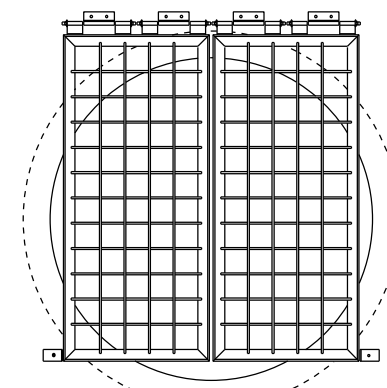
- ### GENERAL NOTES
1. All shear pin angles shall fit snug and true to face. Cover with waterproof grease prior to installation of pin.
 2. Shear pin holes in the angle shall be drilled for a tight fit of the pins.
 3. Both ends of the shear pins shall be peened after installation.
 4. Shear pin material shall be commercially pure aluminum wire alloy 1100, Temper 0, Federal Spec QQ-A411.
 5. Galvanize all ferrous parts after fabrication.
 6. Frame and hinge angles shall have the outstanding legs out.
 7. All steel shall be in accordance with ASTM A36.
 8. Barrier bars shall be equally spaced.
 9. Hinge pin material shall be bolt stock and threaded on both ends so nut and lock washer are flush with the lower angle. Cover pin with waterproof grease prior to installation. Upset or damage exposed threads after installation.
 10. All welding shall be in accordance with Std Spec 604-3.06.

②

ACCESS BARRIER GATE DIMENSION SCHEDULE

Outfall Pipe ID (In)	Number of Barrier Gates	Frame Angles	Shear Pin Clip Angles	Hinge Pin Diameter (In)	Hinge Angles	Hinge Std Pipe Diameter (In)	Number & Length of Vertical Bars	Number & Length of Horizontal Bars	H (In)	W (In)	A (In)	B (In)	C (In)	D (In)	③ Structural Steel (Lbs)
30	1	2 x2 x1/4	4 x4 x1/4	1/2	2 x2 x1/4	3/4	4-31	4-34	33	36	3	0	-3	2	80
36	1	2 x2 x1/4	4 x4 x1/4	1/2	2 x2 x1/4	3/4	4-31	4-34	33	36	3	0	0	3.5	80
42	1	2 x2 x1/4	4 x4 x1/4	1/2	2 x2 x1/4	3/4	4-41	5-34	43	36	3	0	3	0.5	90
48	1	3 x3 x7/16	5 x3 x1/4	3/4	2 1/2 x2 1/2 x1/4	1	4-46	6-34	50	38	3	1	5	1	180
54	1	3 x3 x7/16	5 x3 x1/4	3/4	2 1/2 x2 1/2 x1/4	1	5-52	7-40	56	44	5	3	5	2	205
60	1	3 x3 x7/16	5 x3 x1/4	3/4	2 1/2 x2 1/2 x1/4	1	6-58	8-46	62	50	9	4	5	3	235
66	1	3 x3 x7/16	5 x3 x1/4	3/4	2 1/2 x2 1/2 x1/4	1	7-64	9-52	68	56	11	6	5	4	265
72	2	3 x3 x7/16	5 x3 x1/4	3/4	2 1/2 x2 1/2 x1/4	1	4-69 *	9-34 *	73	38	3	1	-2.5	5	445
78	2	3 x3 x7/16	5 x3 x1/4	3/4	2 1/2 x2 1/2 x1/4	1	4-75 *	10-34 *	79	38	3	1	0.5	5	470
84	2	3 x3 x7/16	5 x3 x1/4	3/4	2 1/2 x2 1/2 x1/4	1	4-81 *	11-34 *	85	38	3	1	3.5	5	495
90	2	3 x3 x7/16	5 x3 x1/4	3/4	2 1/2 x2 1/2 x1/4	1	4-87 *	12-36 *	91	40	3	2	4.5	5	525
96	2	3 x3 x7/16	5 x3 x1/4	3/4	2 1/2 x2 1/2 x1/4	1	5-93 *	13-39 *	97	43	4	3	4.5	5	580

* Per Gate



INSTALLATION DETAIL FOR DOUBLE GATES

APPROVED FOR DESIGN <i>[Signature]</i>	STATE OF ARIZONA DEPARTMENT OF TRANSPORTATION ROADWAY STANDARD DRAWINGS	REV. 5/12
APPROVED FOR DISTRIBUTION <i>[Signature]</i>	STORM DRAIN OUTLET BARRIER GATE	DRAWING NO. C-13.75