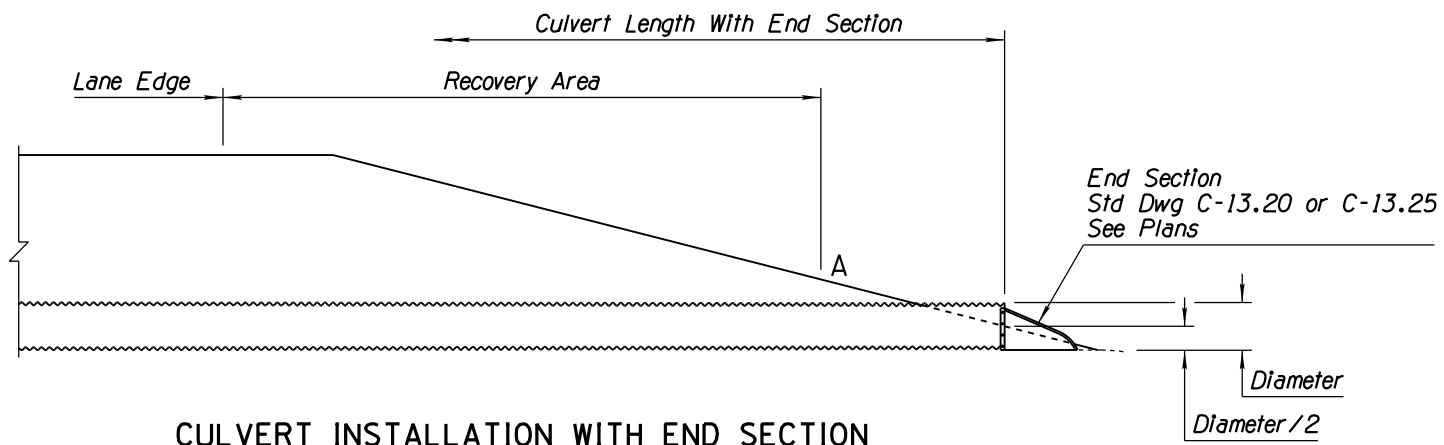


NO	DESCRIPTION OF REVISIONS	MADE BY	DATE
1	REISSUED STANDARD DRAWING	RLF	7/05
2			
3			
4			

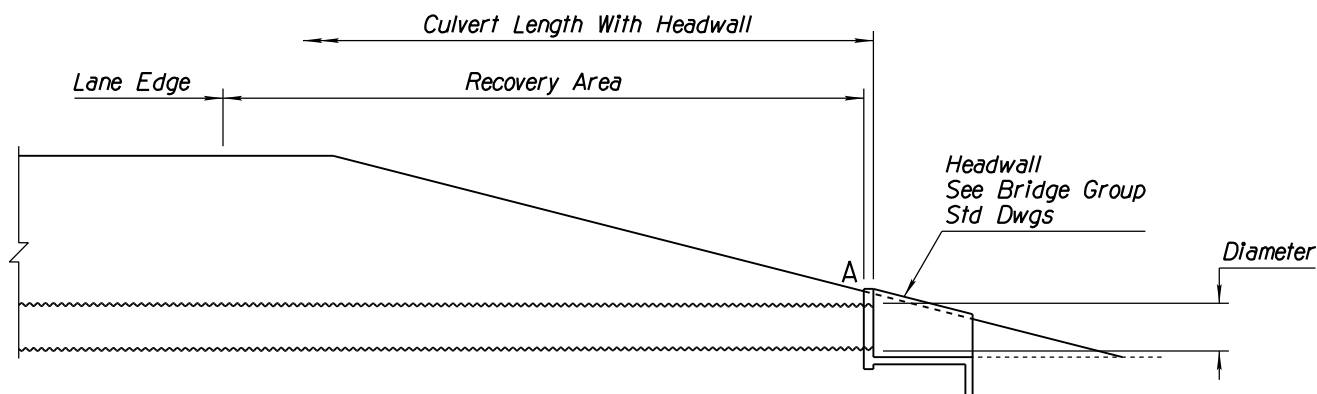
**GENERAL NOTES**

1. See plans for any required inlet and/or outlet protection.
2. E dimension applies to both non-trench and trench conditions.
3. Minimum cover over pipe culverts shall be 1', measured from the top of pipe.
4. See Pipe Berm Requirement Detail for pipe berm requirements and Std Dwg C-03.10 for installation. If Point A is within the recovery area, then a pipe berm is required and Point B is set at the edge of the recovery area.
5. Slope plating shall conform to Std Spec 501.

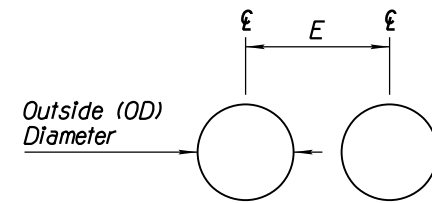


**CULVERT INSTALLATION WITH END SECTION**

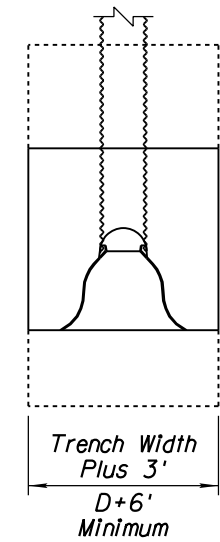
MINIMUM SPACING FOR MULTIPLE PIPES WITH HEADWALL	
Diameter or Span (In)	E (Ft-In)
18	2-6
24	3-0
30	3-9
36	4-6
42	5-3
48 to 66	OD + 3-0
72 and Over	OD + 3-0



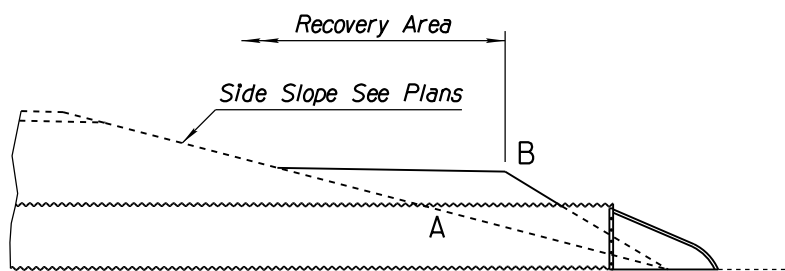
**CULVERT INSTALLATION WITH HEADWALL**



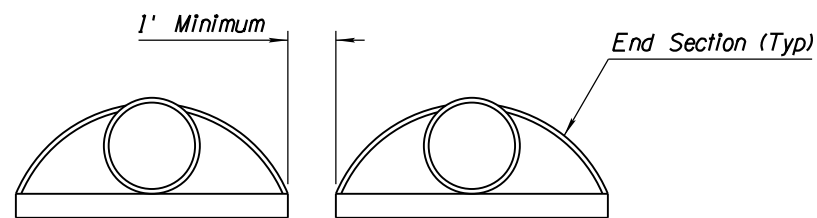
**MINIMUM SPACING FOR MULTIPLE PIPES WITH HEADWALL**



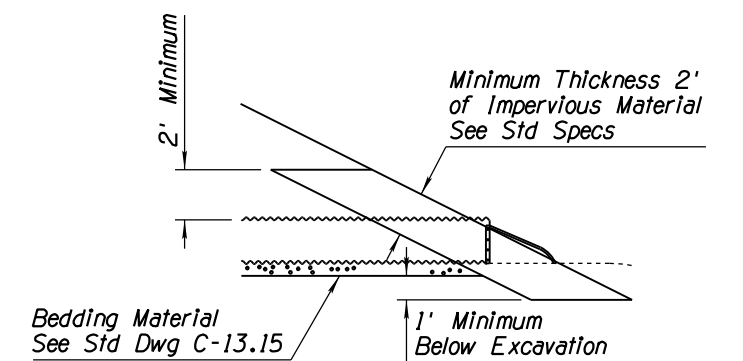
**PLAN**



**PIPE WITH BERM REQUIREMENT DETAIL**  
See General Note 4



**MINIMUM SPACING FOR MULTIPLE PIPES WITH END SECTIONS**



**ELEVATION**

**SLOPE PLATING FOR PIPE WITH END SECTIONS**

APPROVED FOR DESIGN 	STATE OF ARIZONA DEPARTMENT OF TRANSPORTATION ROADWAY STANDARD DRAWINGS	REV. 1 5/12
APPROVED FOR DISTRIBUTION 	PIPE CULVERT INSTALLATION	DRAWING NO. C-13.10 Sheet 1 of 2