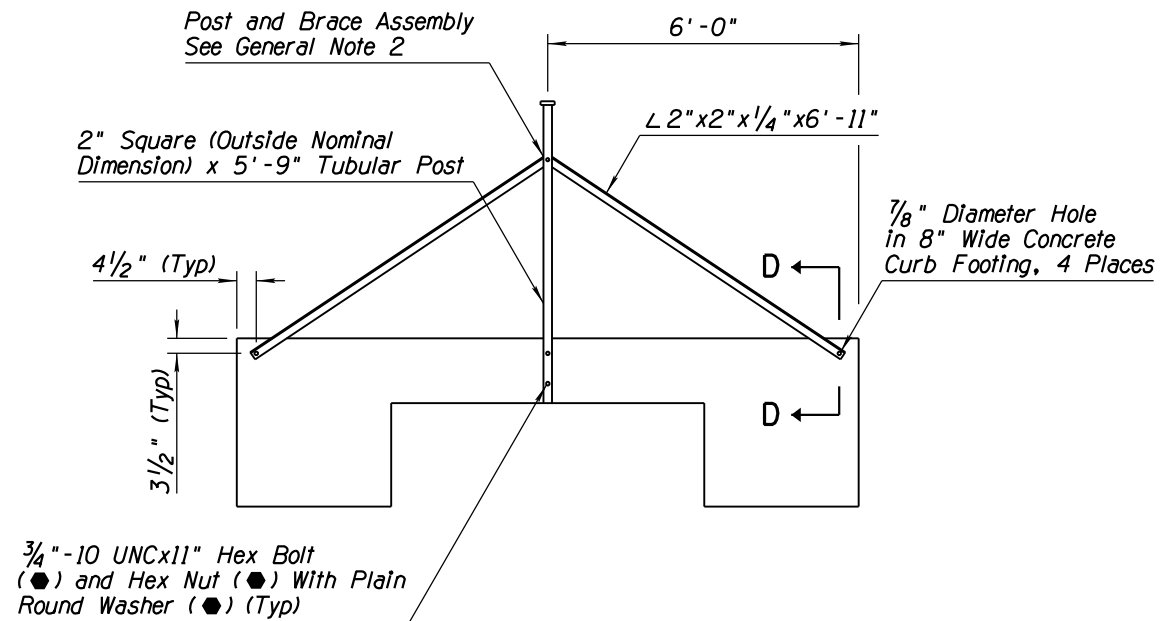


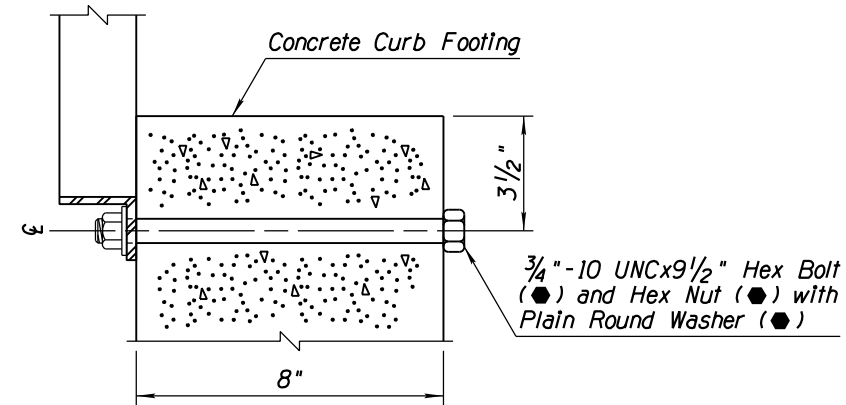
NO	DESCRIPTION OF REVISIONS	MADE BY	DATE
1	REISSUED STD DWG	RLF	4/06
2			
3			
4			

GENERAL NOTES

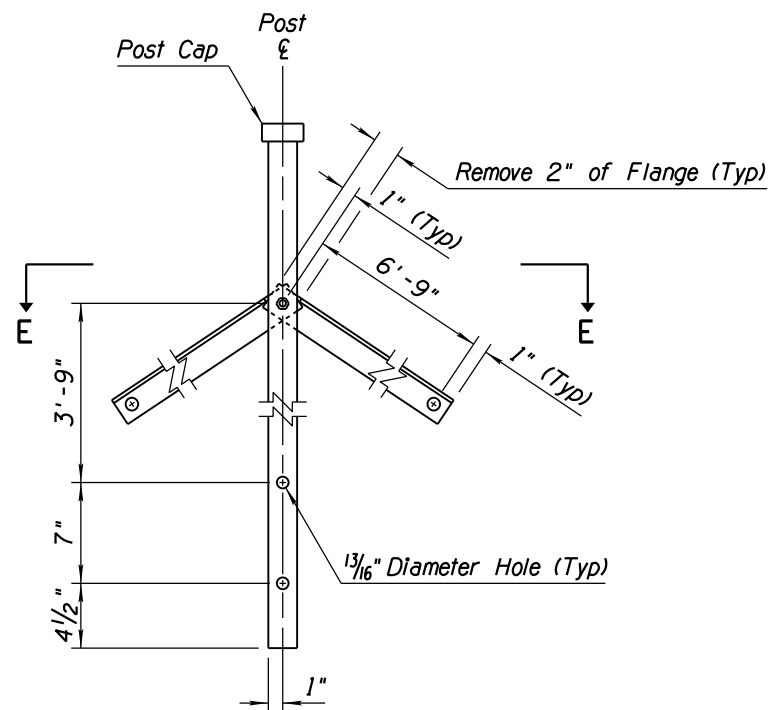
1. Material for shoulder transition shall be placed to the finished roadway elevation for the entire length of the transition. When the roadway is paved, aggregate subbase or AB shall be used. When the roadway is unpaved, a material equivalent to the existing roadway shall be used.
2. On steeper grades, the post shall be installed plumb to align with adjacent fencing. The brace assembly may be modified as necessary to support the post.
 - - Indicates AASHTO, AGC & ARTBA Task Force 13 designation



END VIEW

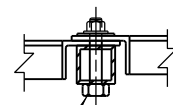


SECTION D-D

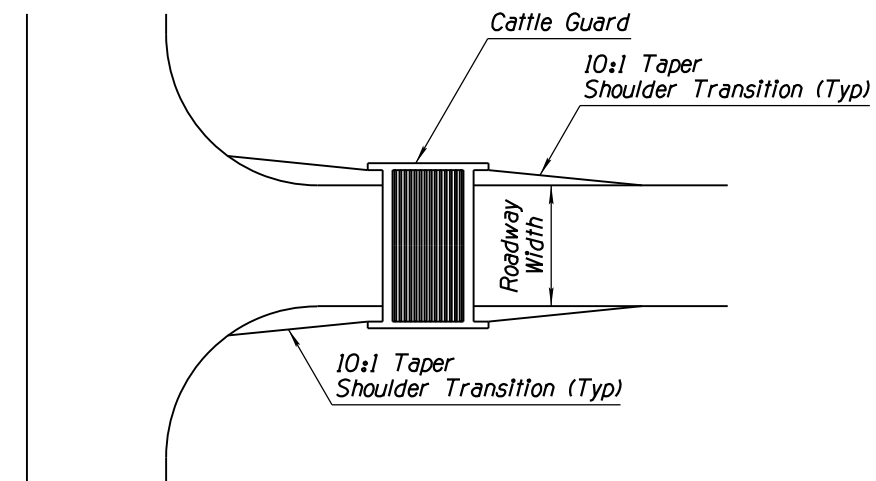


POST AND BRACE ASSEMBLY

3/4"-10 UNC x 3 1/2" Hex Bolt (●) and Hex Nut (●) With Plain Round Washer (●)



SECTION E-E



SHOULDER TRANSITION AT CATTLE GUARDS

APPROVED FOR DESIGN 	STATE OF ARIZONA DEPARTMENT OF TRANSPORTATION ROADWAY STANDARD DRAWINGS	REV. 5/12
APPROVED FOR DISTRIBUTION 	ROADWAY CATTLE GUARD	DRAWING NO. ① C-11.10 Sheet 3 of 4