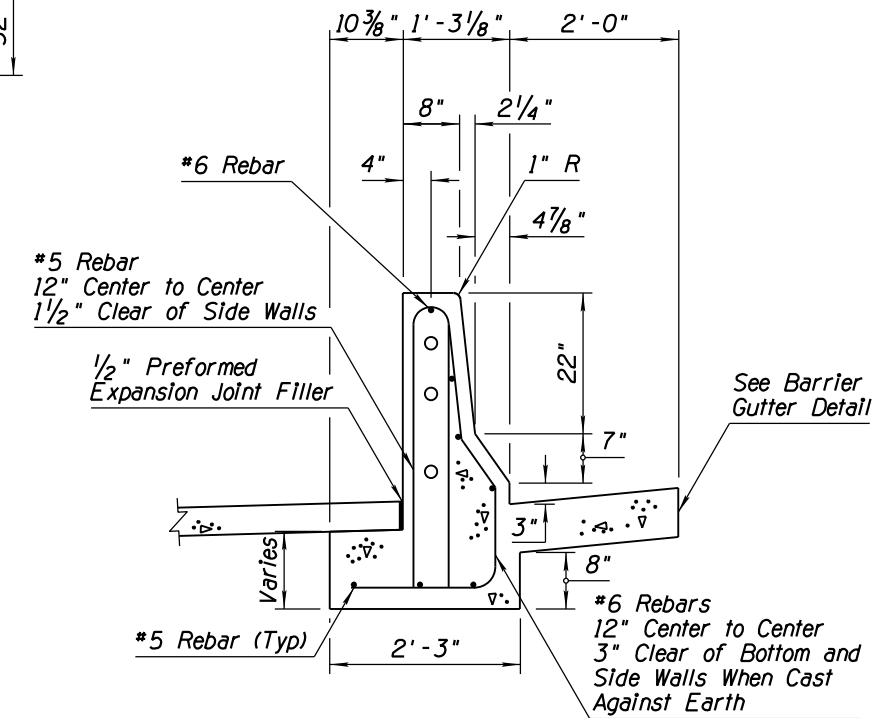
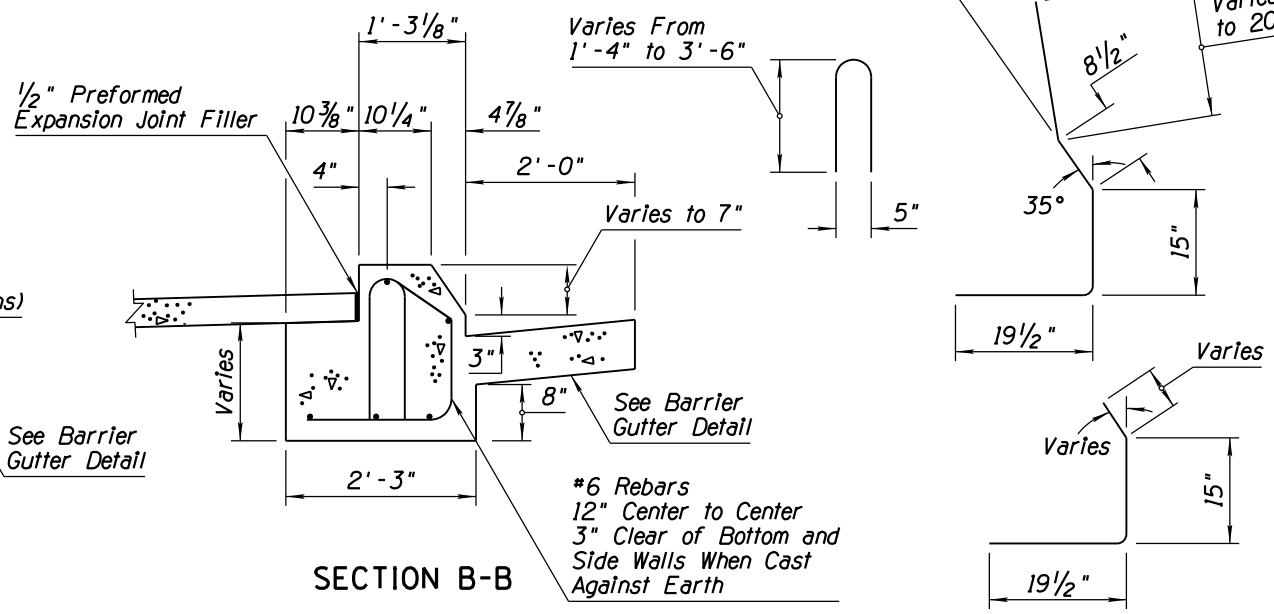
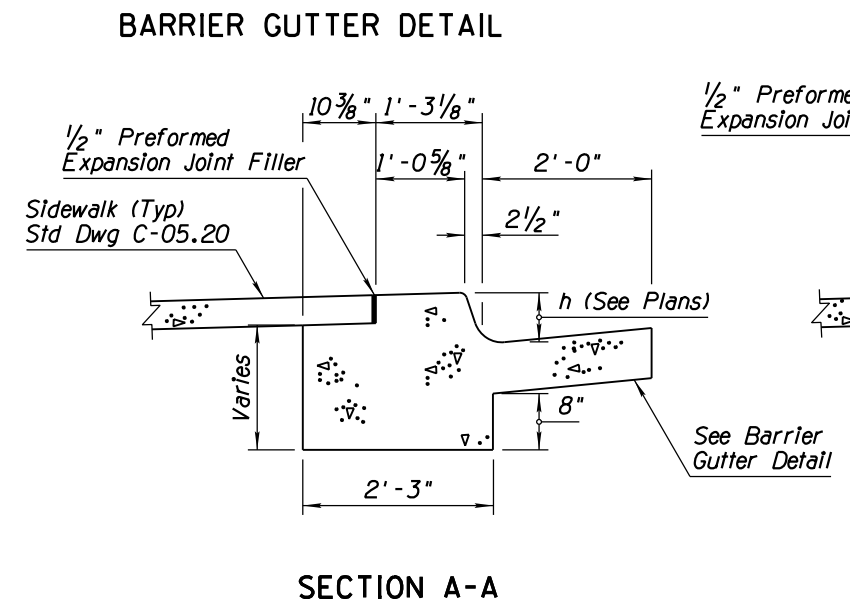
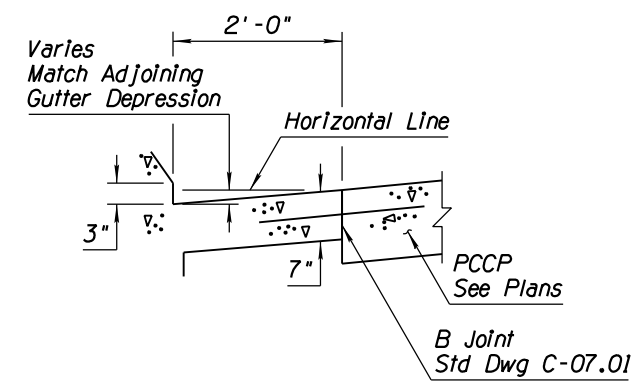
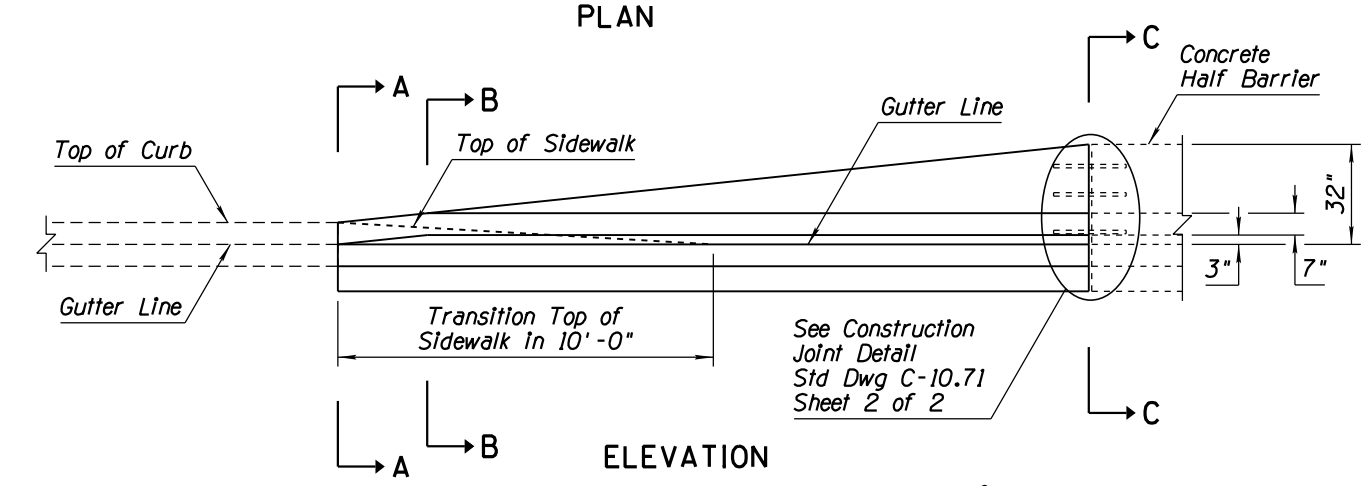
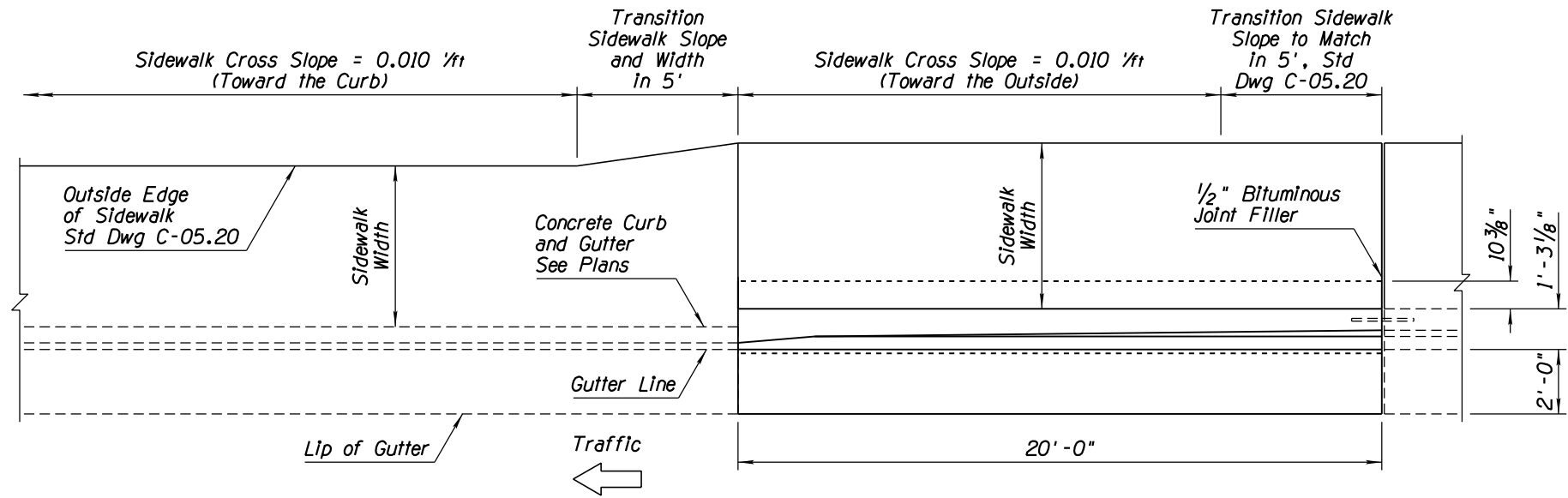


GENERAL NOTES

1. Barrier concrete shall be Class S, $f'c=4500$ PSI.
2. Rebar shall be Grade 60.
3. All rebar shall have 2" minimum clear cover unless otherwise noted.
4. See drainage sheets for slotted drain and catch basin details.
5. Barrier transition shall match both adjoining curb and gutter and concrete Half Barrier.
6. See Std Dwg C-05.20 for sidewalk construction.
7. All bend dimensions for rebar are out-to-out of rebars.
8. Two-inch deep contraction joints shall be placed in the gutter at locations which match the joints in adjacent PCCP and at approximate 15' centers when adjacent to AC pavement. Joints shall be either hand tooled or sawn.



Note to Designer: The information presented in this Standard Drawing has been prepared in accordance with recognized engineering principles and is for general use. It should not be used for specific application without competent professional examination and verification of its suitability and applicability by a licensed professional engineer. Content's within the inner border line shall not be altered.

PRIOR DISTRIBUTION DATE 05/12

STANDARDS ENGINEER J. C. COOPER	ARIZONA DEPARTMENT OF TRANSPORTATION INFRASTRUCTURE DELIVERY AND OPERATIONS DIVISION ROADWAY GROUP STANDARD DRAWING	DRAWING NO. C-10.75
RECOMMENDED FOR APPROVAL GROUP MANAGER D. R. HENRY		CONCRETE HALF BARRIER TRANSITION TYPE 'F' TANGENT DEPARTURE TYPE 1
APPROVED	STANDARDS COMMITTEE APPROVED FOR DISTRIBUTION	DATE 12/17
		Sheet 1 of 2