

GENERAL NOTES

1. Half-barrier Transition shall be constructed by the formed cast-in-place method.
2. Barrier concrete shall be Class S, $f'_c=4500$ PSI.
3. Rebar shall be Grade 60.
4. If the footing and barrier are cast monolithically, #6 S shape rebars are not required.
5. Barrier width shall not exceed the barrier footing width nor overhang the adjacent pavement.
6. #4 rebar shall extend 12" past the construction joint at the completion of the day's pour.
7. Gutter thickness can be adjusted to match the PCCP thickness, as approved by the Engineer.
8. Two-inch deep construction joints shall be placed in the gutter at locations which match the joints in adjacent PCCP and at approximate 15' centers when adjacent to AC pavement. Joints shall be either hand tooled or sawn.

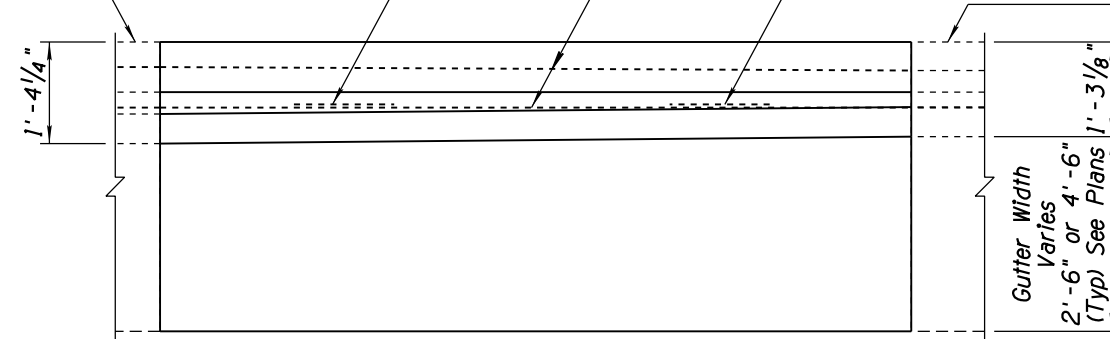
Concrete Half Barrier
42" Type 'F' With Gutter
Std Dwg C-10.53 or
as Shown on Plans

#6 Rebar
S Shape

#4 Rebar
Continuous

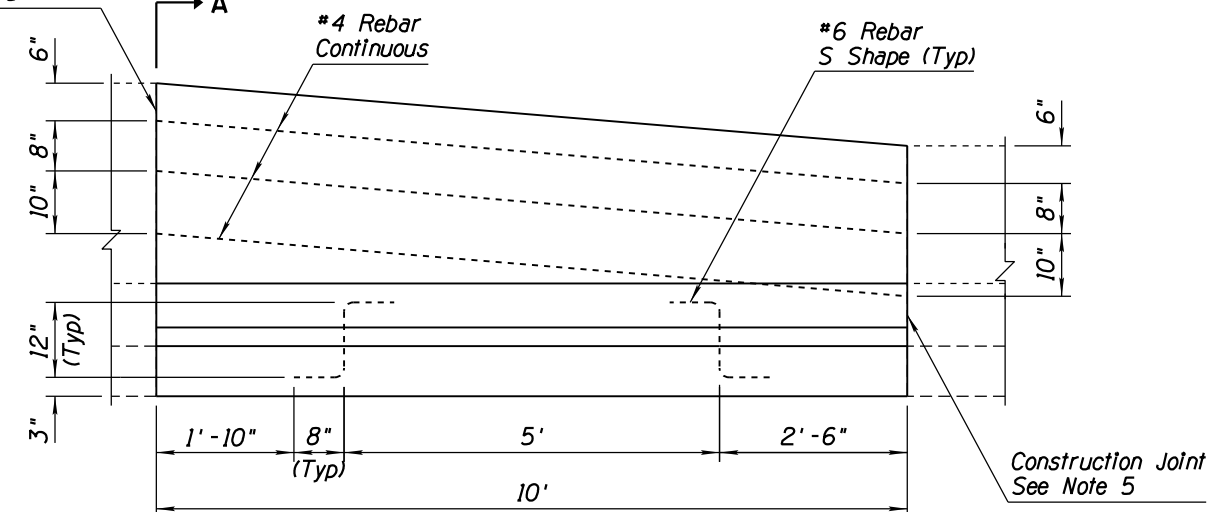
#6 Rebar
S Shape

Concrete Half Barrier
32" Type 'F' With Gutter
Std Dwg C-10.52 or
as Shown on Plans

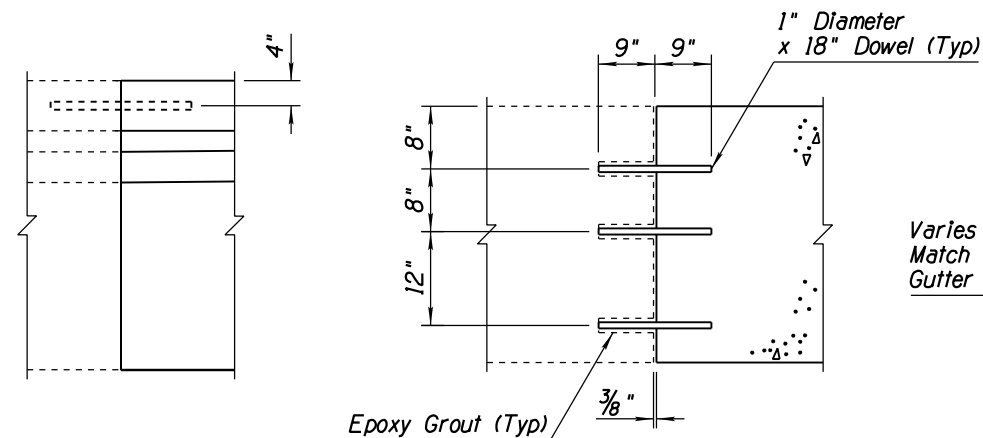


PLAN

Construction Joint
See Note 5



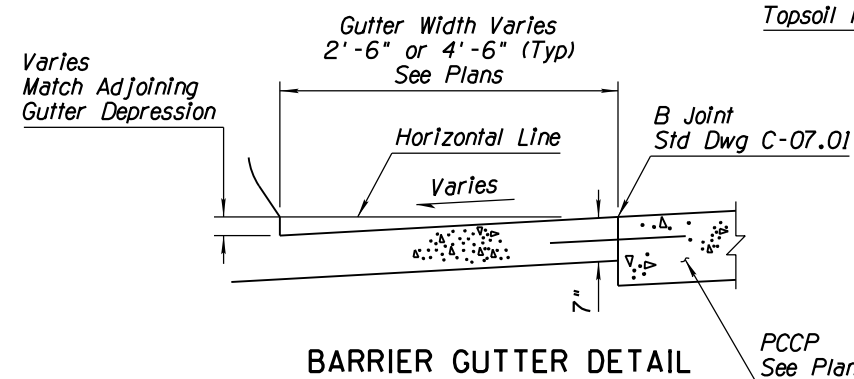
ELEVATION



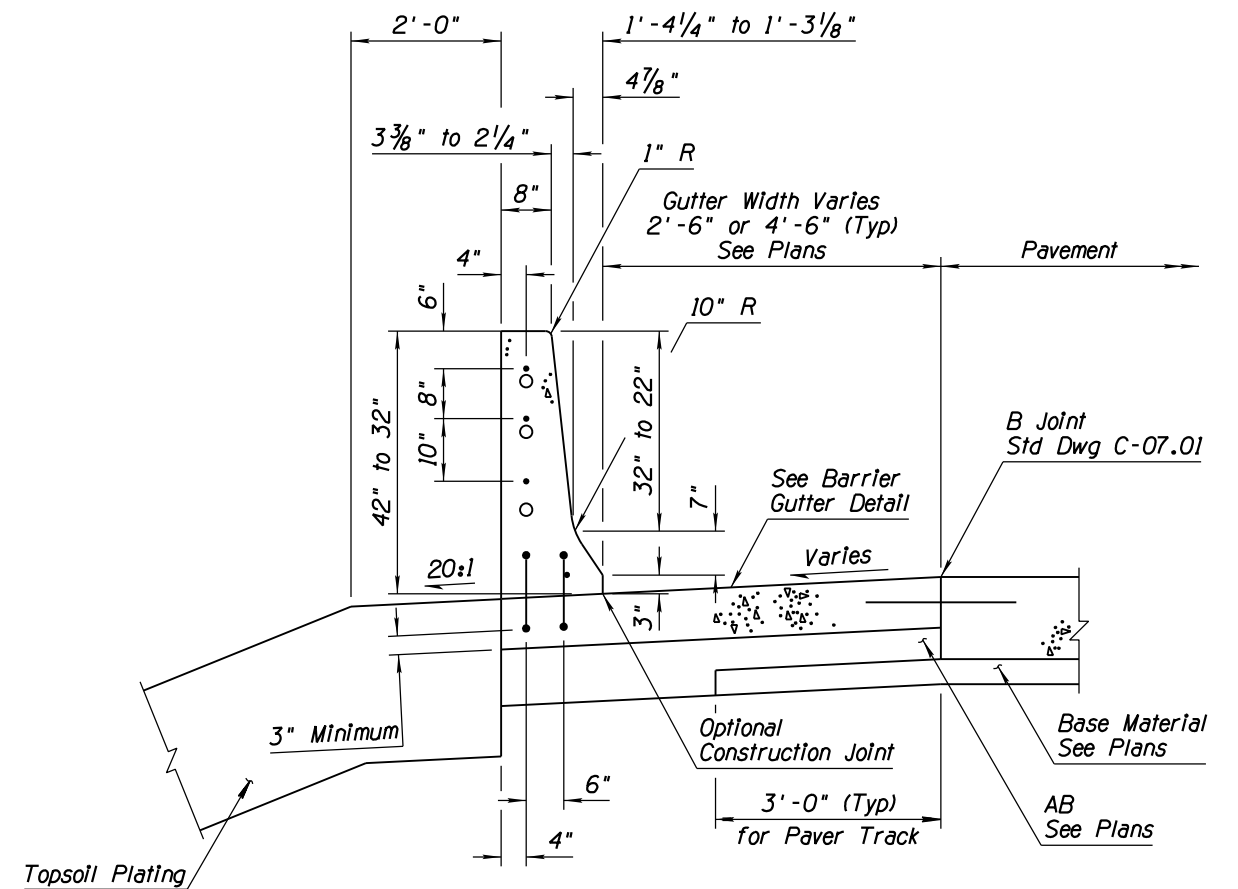
PLAN

ELEVATION

**CONSTRUCTION JOINT DETAIL
(OPTIONAL)**



BARRIER GUTTER DETAIL



SECTION A-A

Note to Designer: The information presented in this Standard Drawing has been prepared in accordance with recognized engineering principles and is for general use. It should not be used for specific application without competent professional examination and verification of its suitability and applicability by a licensed professional engineer. Contents within the inner border line shall not be altered.

05/12

PRIOR DISTRIBUTION DATE

STANDARDS ENGINEER J. C. COOPER	ARIZONA DEPARTMENT OF TRANSPORTATION INFRASTRUCTURE DELIVERY AND OPERATIONS DIVISION ROADWAY GROUP STANDARD DRAWING	
RECOMMENDED FOR APPROVAL		
GROUP MANAGER D. R. HENRY		
APPROVED		
STANDARDS COMMITTEE APPROVED FOR DISTRIBUTION	12/17 DATE	DRAWING NO. C-10.74
CONCRETE HALF BARRIER TRANSITION 42" TO 32" TYPE 'F'		