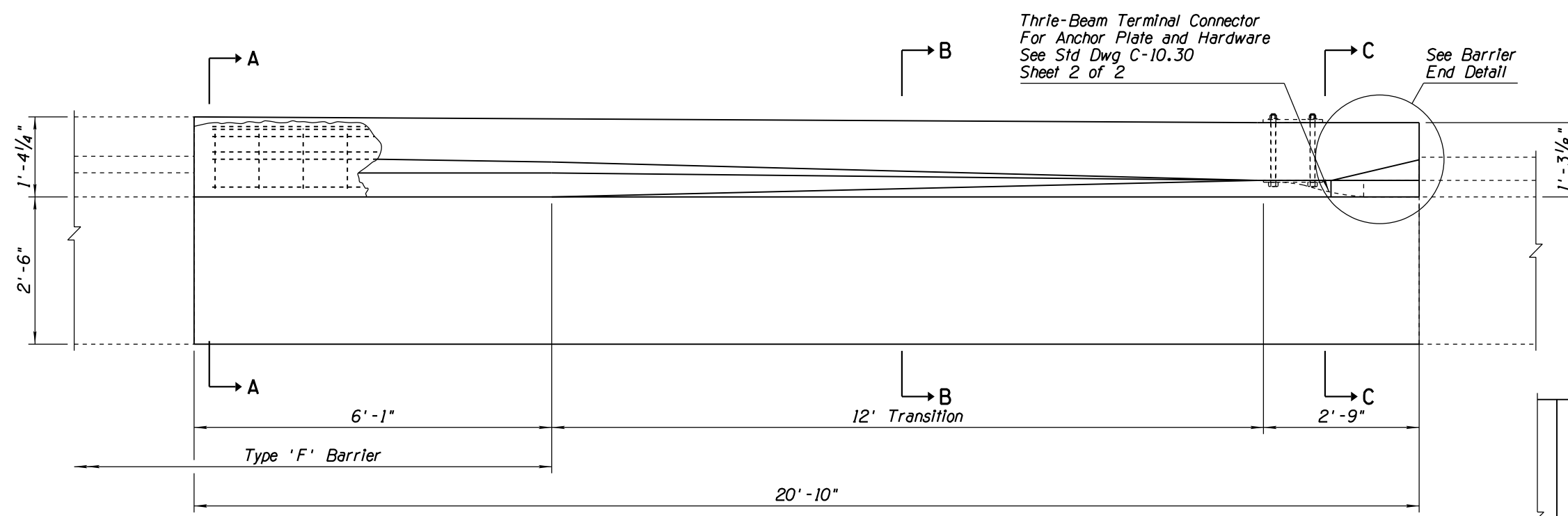
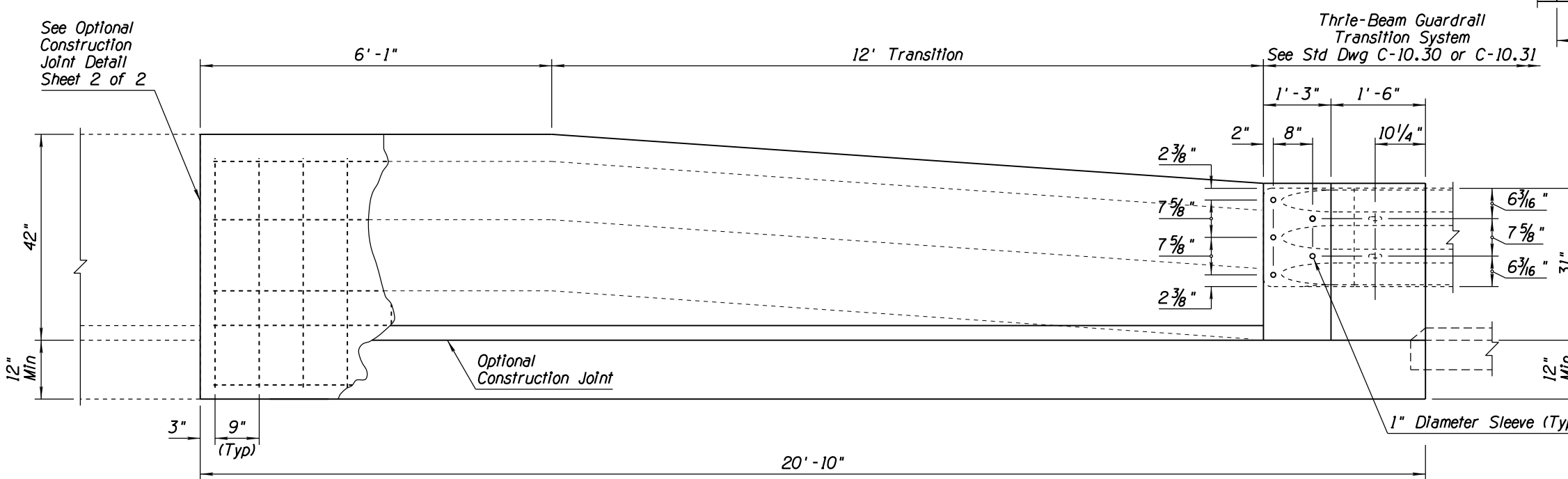


Note to Designer: The information presented in this Standard Drawing has been prepared in accordance with recognized engineering principles and is for general use. It should not be used for specific application without competent professional examination and verification of its suitability and applicability by a licensed professional engineer. Content's within the inner border line shall not be altered.

PRIOR DISTRIBUTION DATE 05/12

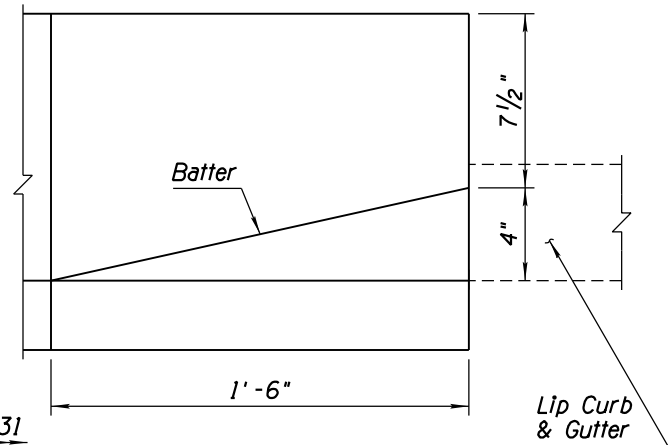


PLAN



ELEVATION
BARRIER WITH CURB AND GUTTER

- ### GENERAL NOTES
1. Concrete shall be Class S, $f'_c=4500$ PSI.
 2. Rebar shall be Grade 60.
 3. All rebar shall have 2" minimum clear cover unless otherwise noted.
 4. All bend dimensions for rebar are out-to-out of rebars.
 5. Two-inch deep contraction joints shall be placed in the gutter at locations which match the joints in adjacent PCCP and at approximate 15' centers when adjacent to AC pavement. Joints shall be either hand-tooled or sawn.



BARRIER END DETAIL

STANDARDS ENGINEER J. C. COOPER	ARIZONA DEPARTMENT OF TRANSPORTATION INFRASTRUCTURE DELIVERY AND OPERATIONS DIVISION ROADWAY GROUP STANDARD DRAWING	
RECOMMENDED FOR APPROVAL GROUP MANAGER D. R. HENRY	CONCRETE HALF BARRIER TRANSITION TO VERTICAL 42" TO 32" TYPE 'F' WITH GUTTER	DRAWING NO. C-10.73
APPROVED STANDARDS COMMITTEE APPROVED FOR DISTRIBUTION	DATE 12/17	Sheet 1 of 2