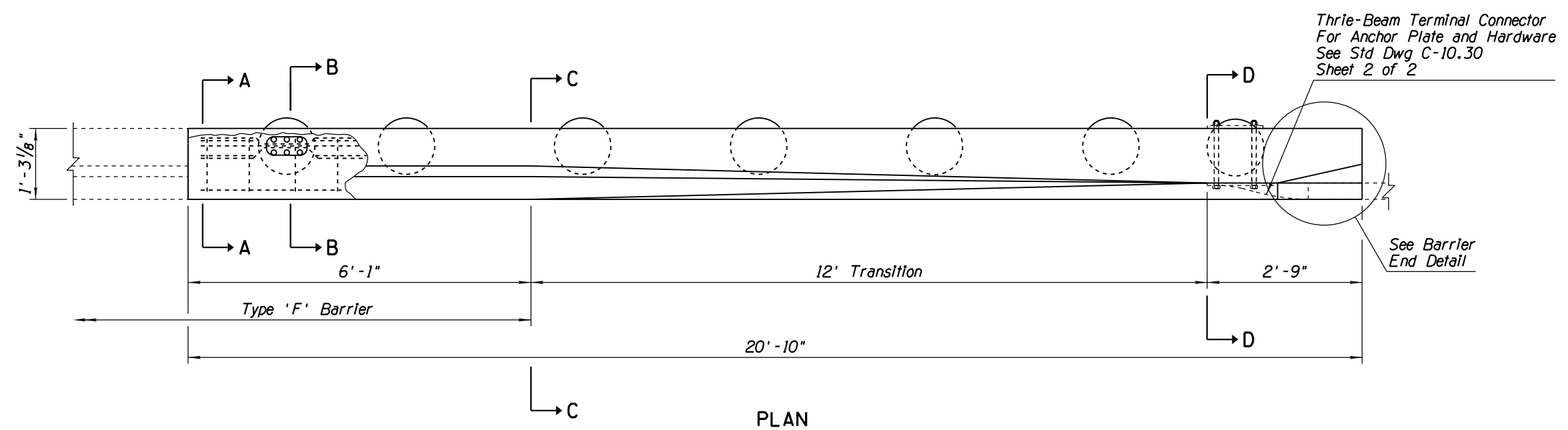
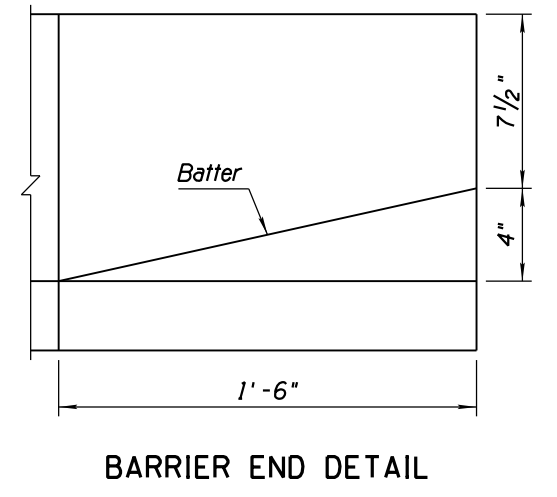
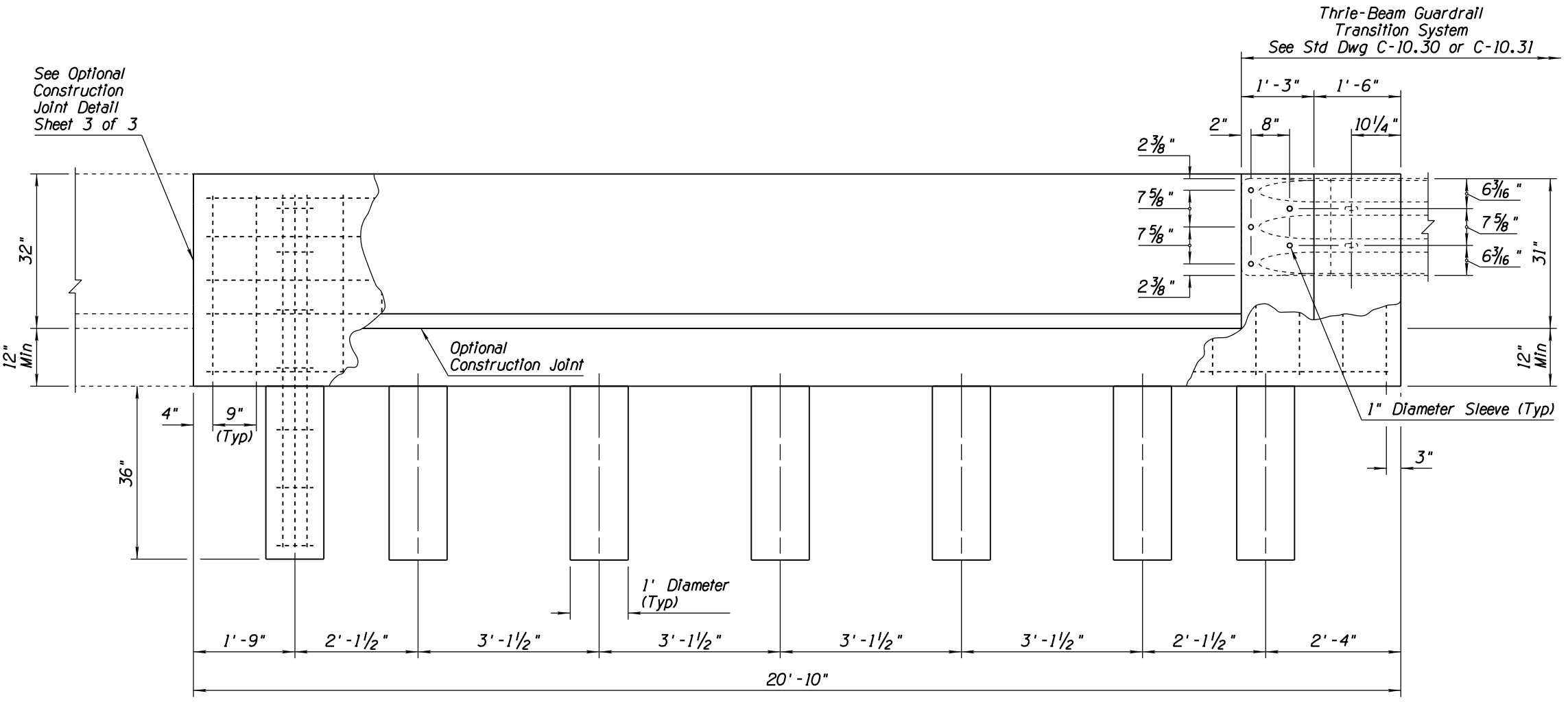


Note to Designer: The information presented in this Standard Drawing has been prepared in accordance with recognized engineering principles and is for general use. It should not be used for specific application without competent professional examination and verification of its suitability and applicability by a licensed professional engineer. Contents within the inner border line shall not be altered.

PRIOR DISTRIBUTION DATE 05/12



- ### GENERAL NOTES
- Concrete shall be Class S,  $f'_c = 4500$  PSI.
  - Rebar shall be Grade 60.
  - All rebar shall have 2" minimum clear cover unless otherwise noted.
  - All bend dimensions for rebar are out-to-out of rebars.



### ELEVATION BARRIER WITHOUT CURB

STANDARDS ENGINEER  
**J. C. COOPER**  
 RECOMMENDED FOR APPROVAL  
 GROUP MANAGER  
**D. R. HENRY**  
 APPROVED  
 STANDARDS COMMITTEE APPROVED FOR DISTRIBUTION 12/17 DATE

ARIZONA DEPARTMENT OF TRANSPORTATION  
 INFRASTRUCTURE DELIVERY AND OPERATIONS DIVISION  
**ROADWAY GROUP STANDARD DRAWING**  
 CONCRETE HALF BARRIER TRANSITION  
 TO VERTICAL  
 32" TYPE 'F' WITH CAISSONS  
 DRAWING NO.  
**C-10.70**  
 Sheet 1 of 3