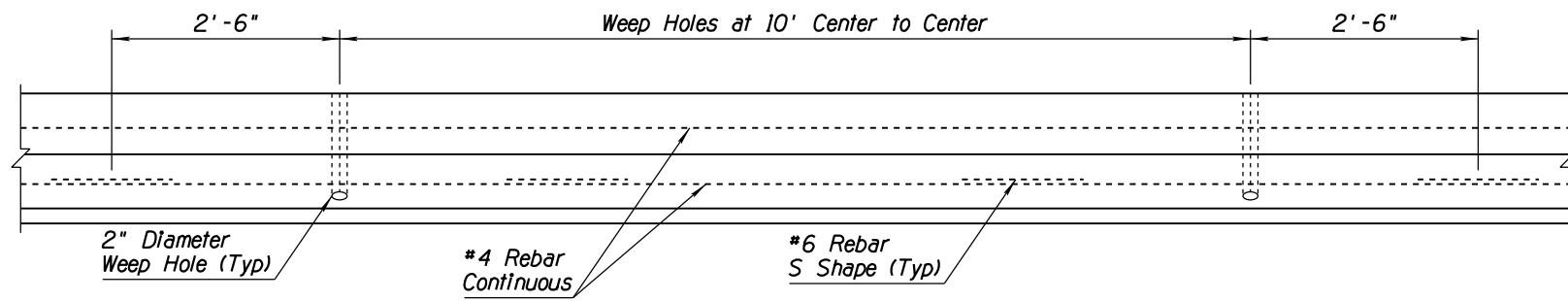
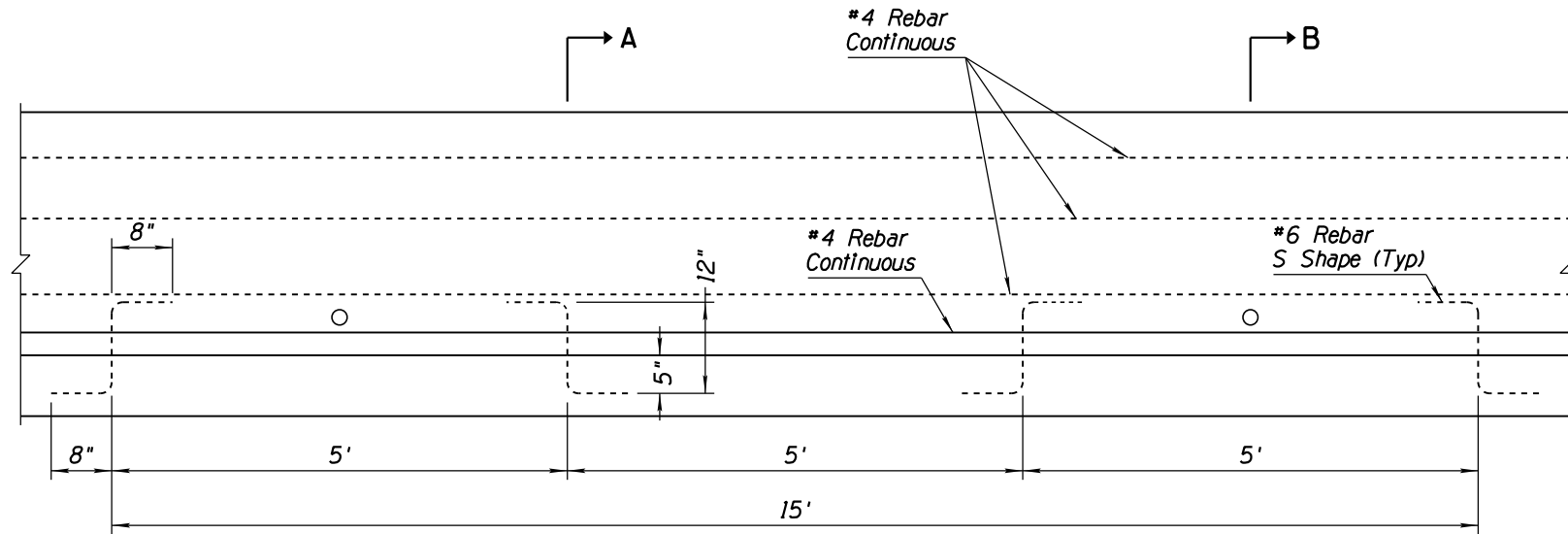


GENERAL NOTES

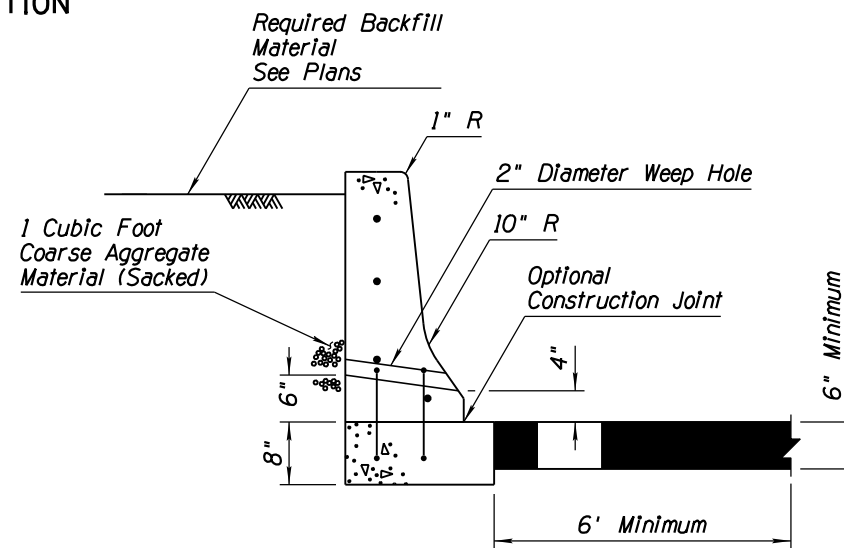
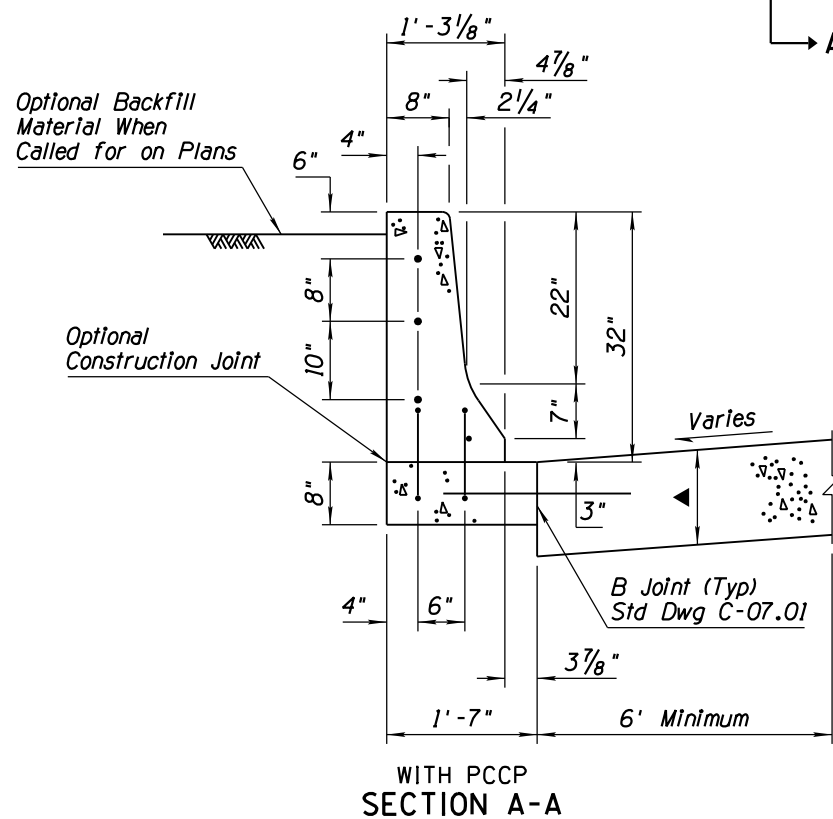
1. Half barrier shall be constructed by the slip or fixed form method.
 2. When obstacles prevent the use of slip form equipment, stationary forms shall be used.
 3. Barrier concrete shall be Class S, $f'_c = 4500$ PSI.
 4. Rebar shall be Grade 60.
 5. If the footing and barrier are cast monolithically, #6 S shape rebar will not be required.
 6. #4 rebar shall extend 12" past the construction joint at the completion of the day's pour.
 7. Weep holes shall be placed whenever barrier is backfilled unless otherwise indicated on the plans.
- ▲ Depth to match adjacent PCCP thickness.



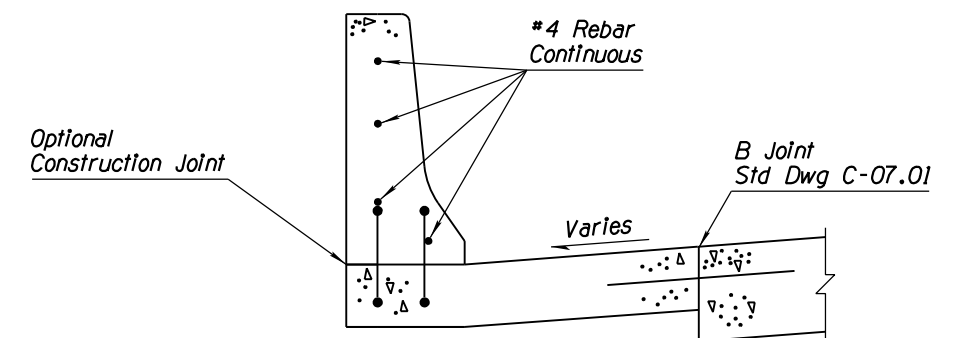
PLAN



ELEVATION



SECTION B-B
SEE SECTION A-A FOR TYPICAL REBAR PLACEMENT



WITH PCCP BARRIER WITH GUTTER
(SEE STD DWG C-10.52)

Note to Designer: The information presented in this Standard Drawing has been prepared in accordance with recognized engineering principles and is for general use. It should not be used for specific application without competent professional examination and verification of its suitability and applicability by a licensed professional engineer. Content's within the inner border line shall not be altered.

PRIOR DISTRIBUTION DATE 05/12

STANDARDS ENGINEER J. C. COOPER	ARIZONA DEPARTMENT OF TRANSPORTATION INFRASTRUCTURE DELIVERY AND OPERATIONS DIVISION ROADWAY GROUP STANDARD DRAWING	
RECOMMENDED FOR APPROVAL GROUP MANAGER D. R. HENRY	CONCRETE HALF BARRIER 32" TYPE 'F' CAST-IN-PLACE	DRAWING NO. C-10.50
APPROVED STANDARDS COMMITTEE APPROVED FOR DISTRIBUTION		DATE 12/17

Sheet 1 of 2