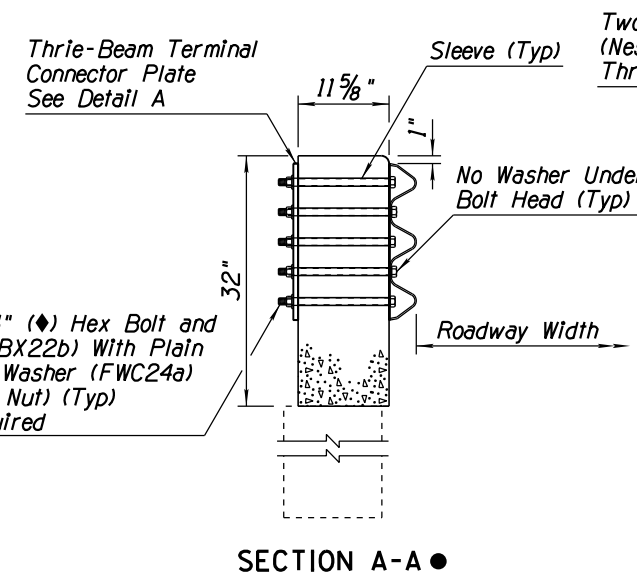


Note to Designer: The information presented in this Standard Drawing has been prepared in accordance with recognized engineering principles and is for general use. It should not be used for specific application without competent professional examination and verification of its suitability and applicability by a licensed professional engineer. Content's within the inner border line shall not be altered.

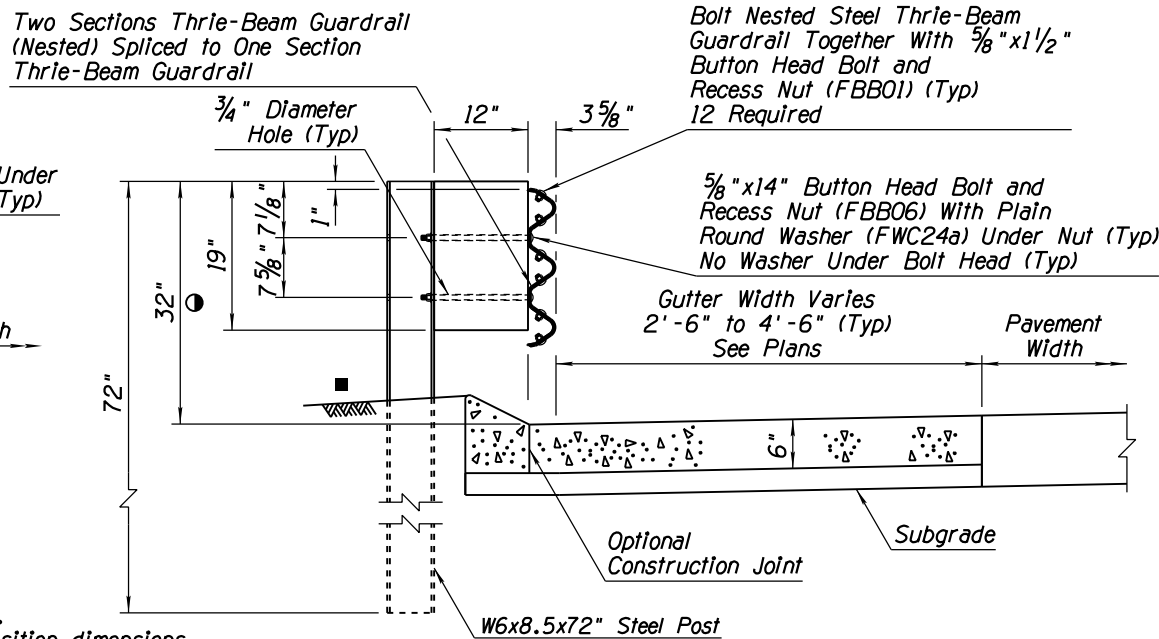
PRIOR DISTRIBUTION DATE



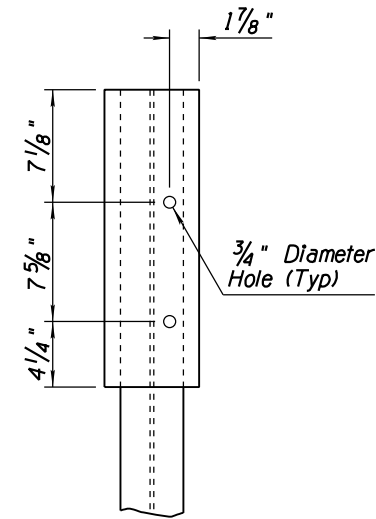
**SECTION A-A**

• Dimensions shown are for C-10.70 series transitions. See SD-1.01, SD-1.02 and SD-1.06 for bridge transition dimensions.

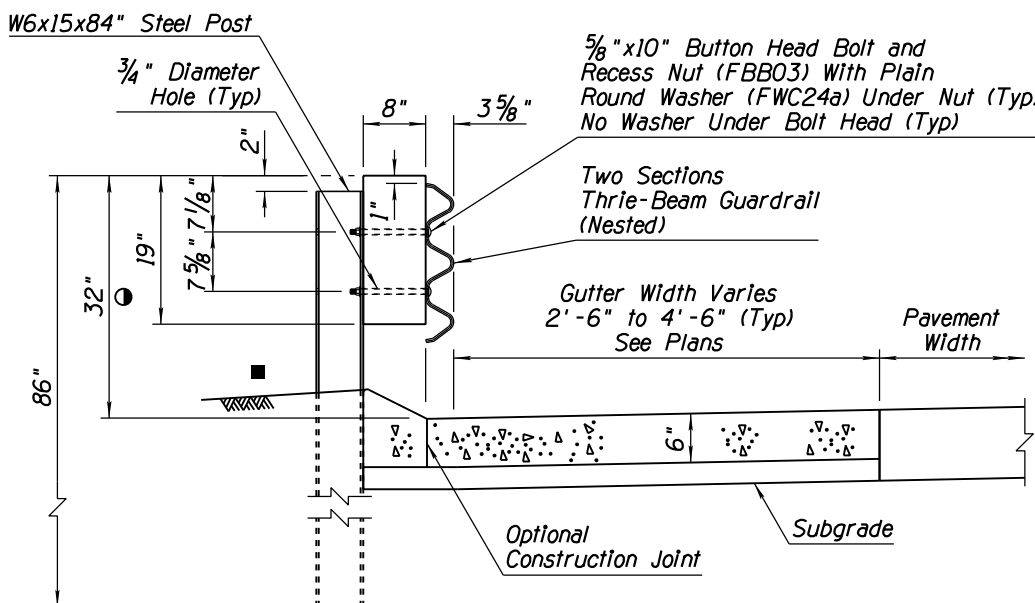
♦ Use 7/8"x15" hex bolt for SD-1.01 and SD-1.06 transitions. Use 7/8"x17" hex bolt for SD-1.02 transition.



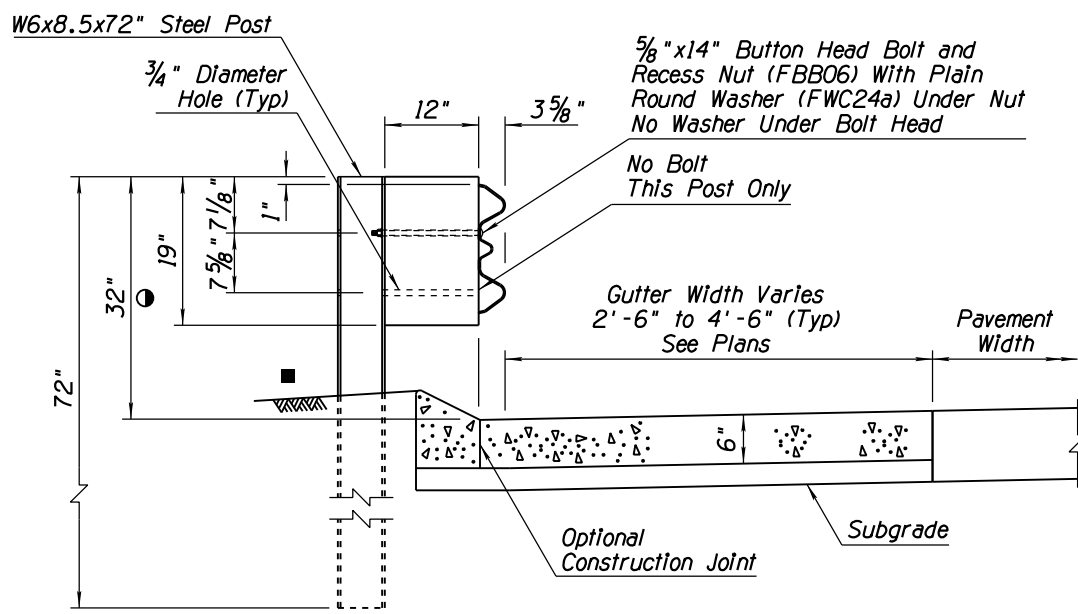
**SECTION C-C**



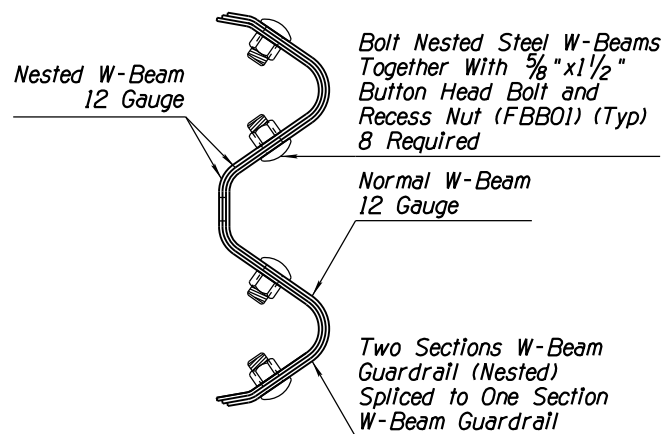
**6"x8"x19" AND 6"x12"x19" BLOCKOUT DETAIL**



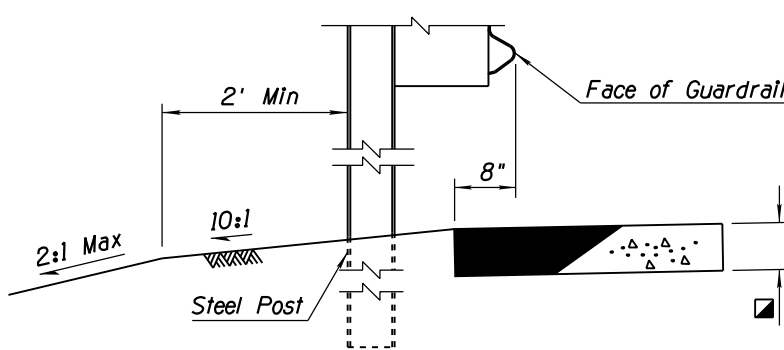
**SECTION B-B**



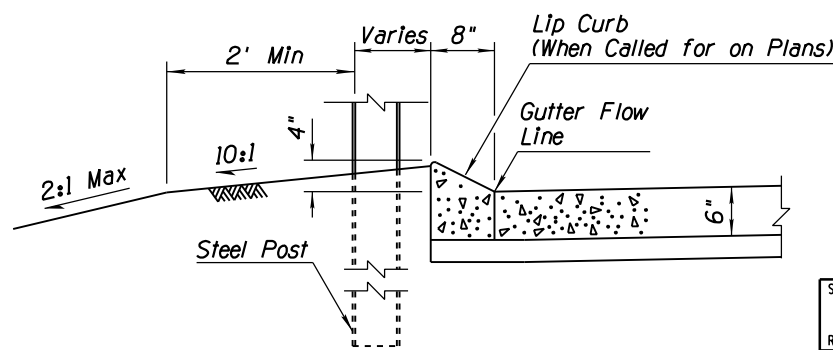
**SECTION D-D**



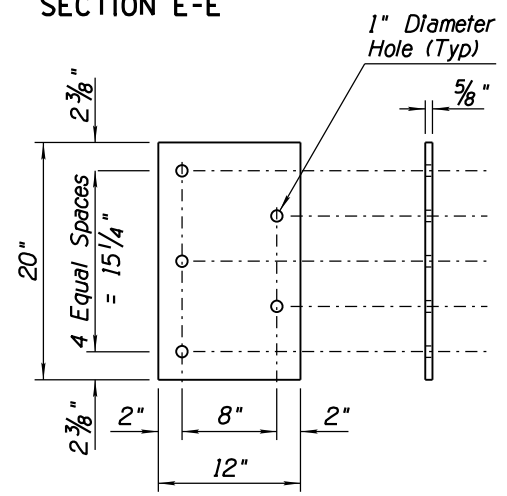
**SECTION E-E**



**STEEL POST NO CURB DETAIL**



**LIP CURB DETAIL**



**DETAIL A THRIE-BEAM TERMINAL CONNECTOR PLATE**

**GENERAL NOTES**

- Anchor plate shall conform to ASTM specification A36. bolts, washers and anchor plate shall be galvanized or, at the contractors option, stainless steel bolts and washers may be used.
  - Two-inch deep contraction joints shall be placed in the curb and the gutter at locations which match the joints in adjacent PCCP and at approximate 15' centers when adjacent to AC pavement. Joints shall be either hand-tooled or sawn.
  - Manufacture components according to the AASHTO-AGC-ARTBA Guide to Standardized Highway Barrier Hardware. Visit the Roadway Engineering web site to view the drawings referenced in parenthesis.
- 32" dimension to top of blockout is measured at face of guardrail. Top of guardrail shall be 31" measured at face of rail.
  - See Lip Curb Detail for slope information
  - ▣ 3" min thick AC or 6" min thick PCCP

STANDARDS ENGINEER  
**J. C. COOPER**  
 RECOMMENDED FOR APPROVAL  
 GROUP MANAGER  
**D. R. HENRY**  
 APPROVED  
 STANDARDS COMMITTEE APPROVED FOR DISTRIBUTION 12/17 DATE

ARIZONA DEPARTMENT OF TRANSPORTATION  
 INFRASTRUCTURE DELIVERY AND OPERATIONS DIVISION  
**ROADWAY GROUP STANDARD DRAWING**

GUARDRAIL TRANSITION  
 TO CONCRETE BARRIER  
 STEEL POST

DRAWING NO.  
**C-10.31**  
 Sheet 2 of 2